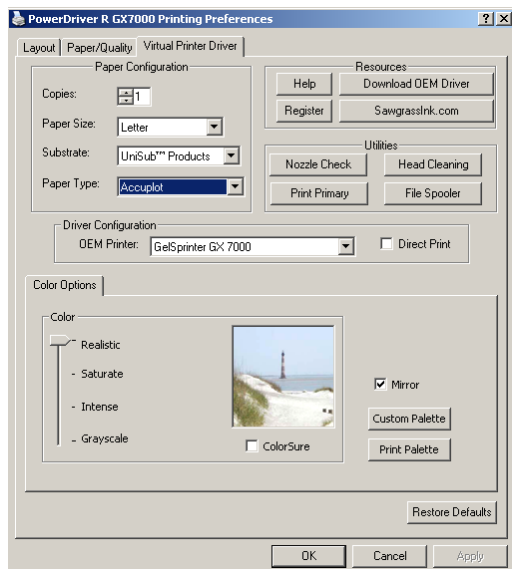


Introduction

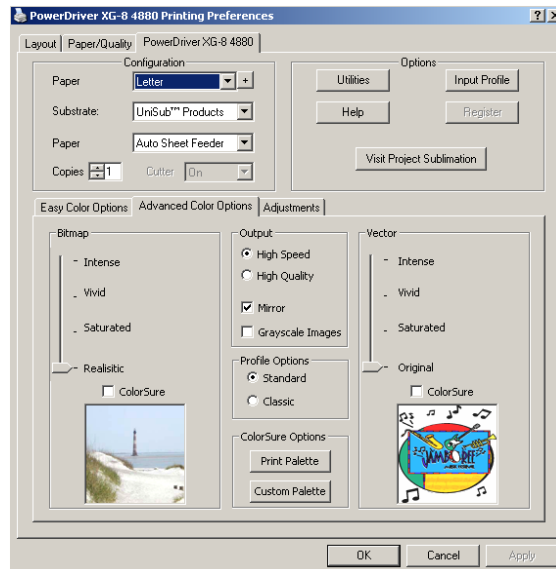
The following figures show the printer properties for two versions of PowerDriver and one version for the ChromaBlast driver. While each platform has its own standard driver, they have similar settings & options.

There are three main property groups:

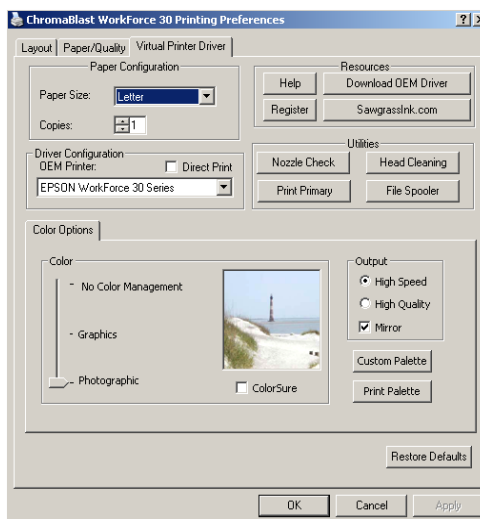
- 1. Paper Configuration/Configuration** – Set Paper, Transfer Substrate, Copy Count and OEM Printer.
- 2. Color Options** – Color Management Control Options & Print Resolution.
- 3. Resources/Utilities/Options** – Utilities, (for printer maintenance), online Help, & Product Registration.



PowerDriver Example



Another PowerDriver Option



ChromaBlast Driver Example

Sawgrass Technologies, Inc. is a leading developer of digital printing technology for mass customization of products on a wide variety of surfaces – including fabrics, plastics, metals, films and ceramics.

Sawgrass offers global markets state-of-the-art systems for creating highly customized, high-quality full color images, as a total solution provider, Sawgrass combines patented digital ink formulations with advanced color management software and a consultative technical support team to meet the needs of production customers looking for profitable production of mass customized products.

Sawgrass is committed to delivering quality products that customers can trust. Our patented ink technologies are accompanied by strong internal support systems. Sawgrass invests heavily in R&D to continue our tradition of bringing advanced color solutions to the international marketplace.

Sawgrass Technologies' US Headquarters is in Charleston, SC and our European Headquarters is in Basel, Switzerland, with additional offices in Sheffield, England.

Group 1 – Configuration

- **Paper Size** – From the drop down list, select the paper size you wish to use.
- **Substrate** – From the drop down list, select the type of material to which you will be transferring your printed image. It is important to choose the correct substrate. The driver's color management is optimized for each different substrate.
- **Copies** – Sets the copy count for the number of prints to be made.
- **Paper Type** (For the Ricoh 7000 driver only) – Sets the Paper Configuration for the type of paper used & recommended.
- **Driver Configuration (OEM driver)** – Sets the OEM Printer Configuration for the printer used.
- **Direct Print** (not applicable with all drivers) – Checking this option by-passes the driver functionality and sends the job directly to the printer.

Group 2 - Color Options

Vector and Bitmap Explanation

Bitmaps are a grid of pixels. Bitmaps come from digital cameras, scanners, and photo CDs. Bitmaps can also be created in applications like Corel PhotoPaint or Adobe PhotoShop. Bitmaps have file extensions like GIF, JPG, BMP, and TIF. Vector components consist of shapes, curves, lines, and text. They are also created in programs such as CorelDraw and Adobe Illustrator. Higher end programs like CorelDraw can combine Vector and Bitmaps into a single image. Sawgrass drivers will color correct all bitmaps files and vector components as bitmap images.

Vector/Bitmap Options (Please note: These options may vary with each driver but the functionality is still the same)

- **Intense** - Intended for use with an image when the desired output is to have the most ink possible on the transferred image. (Note: Using this option will often make small areas of text or graphics bleed together.)
- **Saturated** - Intended for use with an image when the desired output is to have more ink in the transferred image. (Note: Using this option will often make small areas of text or graphics bleed together.)
- **Vivid** - Intended for use with an image when the desired output is to have the image as vivid as possible versus a realistic option.
- **Realistic** - Intended for use with photographs or images when the output desired is the closest to the exact image as possible. It is also used most commonly with images that contain prominent skin tones or highlights.
- **Grayscale** - This setting is intended for use with grayscale images or images where the desired output is a grayscale image. This setting will only print in black & white – even if the original image is in color.
- **No Color Management** – To unleash the power of the PowerDriver Software, the color management will need to be turned off (over-riden) in the Graphic Software. This allows the driver to do the color management. However, if you select the “No Color Management” option, all color management will have to be accomplished using the Graphic Design Software.
- **Graphics** (ChromaBlast driver only) - This setting is intended for use with vector based images when the output desired is the closest to the exact image as possible. It is also used most commonly with images that contain prominent skin tones or highlights.
- **Photographic** (ChromaBlast driver only) - This setting is intended for use with bitmap or photo based images when the output desired is the closest to the exact image as possible. It is also used most commonly with images that contain prominent skin tones or highlights.

- **ColorSure Checkbox** - ColorSure is used to replace specific colors in your image with a spot color chosen from the ColorSure palette. Check this box when a ColorSure color has been used in the artwork being printed. A ColorSure spot color will ALWAYS print the same.

Output Options

- **High Speed** – If the printer supports multiple resolutions, choose the most appropriate setting. For soft substrates, the High Speed option works well.
- **High Quality** – If the printer supports multiple resolutions, choose the most appropriate setting. For hard substrates, choose the High Quality option.
- **Mirror** – When you transfer an image, the result will be “flipped” when compared to the printed image. In order for your transfers to come out correctly, you must flip the image before transferring. Select this option to do the flipping for you. If you are doing this yourself in your editing application, make sure this option is turned off.
- **Max Density** (ChromaBlast only) – This setting allows the maximum amount of ink to be printed which should create more vivid color and deeper blacks. If you see bleeding in your image, make sure to turn this setting off.

ColorSure Options

- **Print Palette Button** – Prints the **ColorSure Palette** for the selected substrate. **ColorSure*** is a tool for reproducing exact spot colors.
- **Custom Palette Button** – This button launches the **Custom Palette Utility***, which enables you to add, edit, import, and export custom colors to the **ColorSure Palette**. If you need to precisely match a specific color, the **Color Finder Tool** makes this easy.

(*See the ColorSure & Custom Palette Utility instructions on the website under the Technical Support FAQ's)

Group 3 – Resources

- **Nozzle Check Utility** – Click this button to print a nozzle check pattern. If any of the nozzle check patterns are incomplete, then perform a print head cleaning cycle. Individual channels maybe cleaned using this utility.
- **Head Cleaning** - Performs a printer head cleaning, after which a Print Nozzle Check should be performed to verify that the heads are completely cleaned. Repeat the Head Cleaning until a complete nozzle check pattern is produced. (Note: Do Not Use the Auto Nozzle Check/Cleaning Option within any driver)
- **Help** – This will display a help dialog box for an easy overview of the Driver functions and settings. Also contains a link to the Sawgrass Technologies Website.
- **Register** – If the driver product has not been registered, click this button for instructions on how to register the product and unlock all the features.
- **Sawgrassink.com** – Links directly to the Sawgrass Technologies Website for additional resources.
- **Print Primary** – Use this function to print a page of the ink colors associated with the printer being used. This will pull pure color from each ink channel. This should be used as a troubleshooting step to determine any ink related issues.
- **File Spooler** (not applicable with all drivers) – Opens a utility that will allow printing of single or multiple prn files. This is helpful for printing jobs with a high number of copies.
- **Download OEM Driver** (not applicable with all drivers) – Will redirect you to the Epson or Ricoh website were the OEM driver can be downloaded.

Helpful tips on using these options**PowerDriver for SubliJet Ink:**

- Realistic &/or Original with the High Quality option is the most used for all color management. Many customers feel that setting gives them the best output for their images.
- Since the High Quality option uses more ink the High Speed Setting can be used with the Realistic/Original setting also.
- The Intense setting is better used with vector based images versus photographic.
- It's recommended to print out a ColorSure palette and have it on hand for customers & graphic designers. It's a visual representation of the guaranteed colors that can be achieved with that printer & palette.
- Never use the Auto Nozzle Check option.
- High Speed should be used with soft substrates – High Quality with hard substrates.
- Selecting Grayscale will automatically print all images in a grayscale – regardless of the actual image color.
- Use the File Spooler for large quantity print jobs. It allows you to spool the file just once and will speed up your printing time & will use less memory.
- If the ColorSure option is checked, the driver will attempt to match any/all colors in the image regardless if they were selected from the ColorSure palette or not. Any non-ColorSure colors may not come out as expected.

ChromaBlast Driver for ChromaBlast Ink:

- Use the color option that is the same as the image being printed. i.e. – if you have a photograph use the photograph setting. However, if you have an image that uses both photos & graphics it is recommended to use the photograph setting.
- ChromaBlast Ink and ChromaBlast Driver are only recommended with ChromaBlast paper.
- The No Color Management option should only be used if you are familiar with applying color management in your graphics software.
- It's recommended to print out a ColorSure palette and have it on hand for customers & graphic designers. It's a visual representation of the guaranteed colors that can be achieved with that printer & palette.
- Never use the Auto Nozzle Check option.
- Use the File Spooler for large quantity print jobs. It allows you to spool the file just once and will speed up your printing time & will use less memory.
- If the ColorSure option is checked, the driver will attempt to match any/all colors in the image regardless if they were selected from the ColorSure palette or not. Any non-ColorSure colors may not come out as expected.