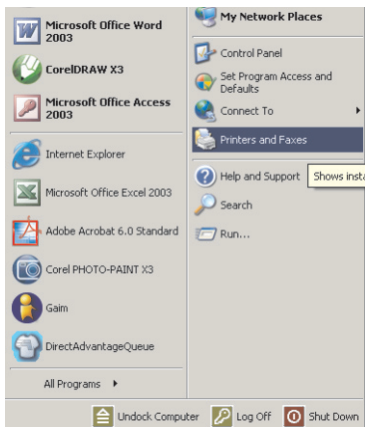
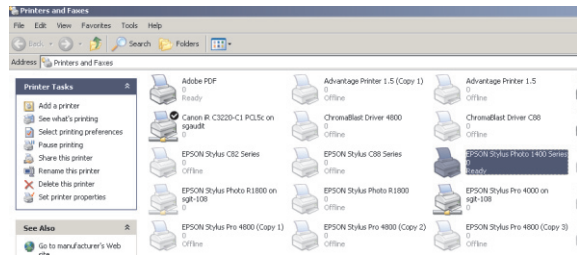


Configuring the Epson Stylus Photo 1400 Printer Driver for ArTainium ICC Profiles

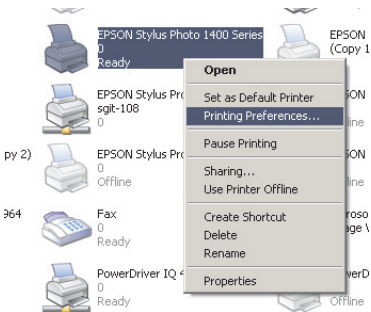
1. On the PC desktop, click Start then select Printer and Faxes as shown below:



2. Select the Epson Stylus Photo 1400 Series Printer Icon.

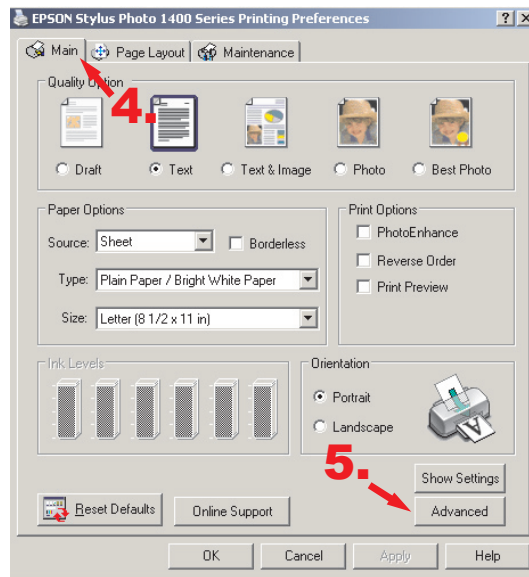


3. Right click and select Printing Preferences from the context menu.



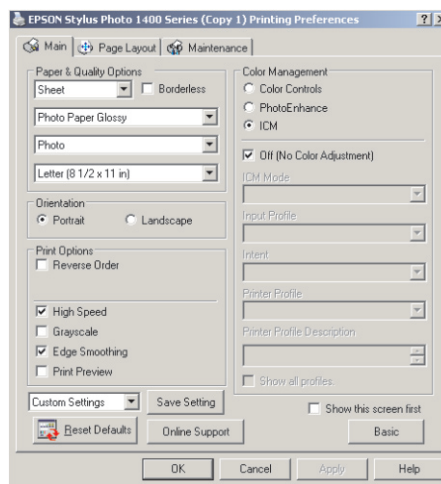
4. Click on the Main tab to show the screen you will be working in.

5. Click on the Advanced Tab to setup the necessary options for Artainium profiles.



6. Select the settings as shown below:

- Media Type: **Photo Paper Glossy**
- Print Quality: **Photo**
- High Speed: **On**
- Edge Smoothing: **On**
- Color Management: **ICM**
- ICC/ICM Profile: **Off (No Color Adjustment)**

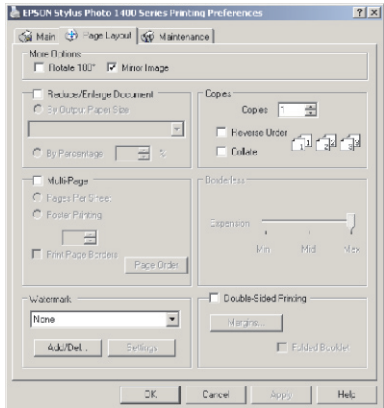


7. Once settings are complete, click on the Save Settings button to save these options. This will ensure the process would not have to be completed each time printing is done.

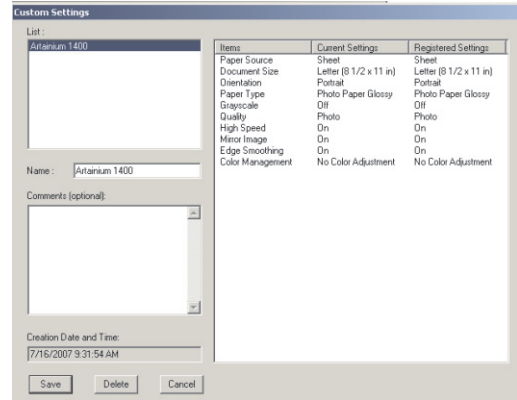
Configuring the Epson Stylus Photo 1400 Printer Driver for ArTainium ICC Profiles



8. Next, click on the Page Layout tab and click on Mirror Image so that it becomes the default setting. If you do not want to mirror an image, this setting can be changed before printing.



9. Type Artainium 1400 in the Name field and click Save. Note: You don't have to use Artainium 1400 as the name for this setting; you can use any name that will work for your process.



10. Click on OK under the Advanced Tab to close that window and complete the setup.

The previous settings are ideal for printing/transferring onto hard substrates such as ceramics, metal, Unisub, etc. For softer substrates, the driver can be setup to print faster using a different paper setting.

1. To add this setting, go through Steps 1-5. For step 6, select the settings below:

- Media Type: **Presentation Paper Matte**
- Print Quality: **Photo**
- High Speed: **On**
- Edge Smoothing: **On**
- Color Management: **ICM**
- ICC/ICM Profile: **Off (No Color Adjustment)**

2. To save this setting follow steps 8 - 10.

*** Note: Be sure to use a different name for this setting so that you don't overwrite the previous name.

