

Epson WorkForce 30

Setup and Print Guide: CorelDRAW X5

NOTE: Before proceeding, please be sure you have the correct OEM driver and PowerDriver IQ installed. For assistance with driver installation, refer to the Getting Started Guide.

CorelDRAW X5 Setup Guide

1.) Open a New Page in CorelDRAW: (see FIGURE 1)

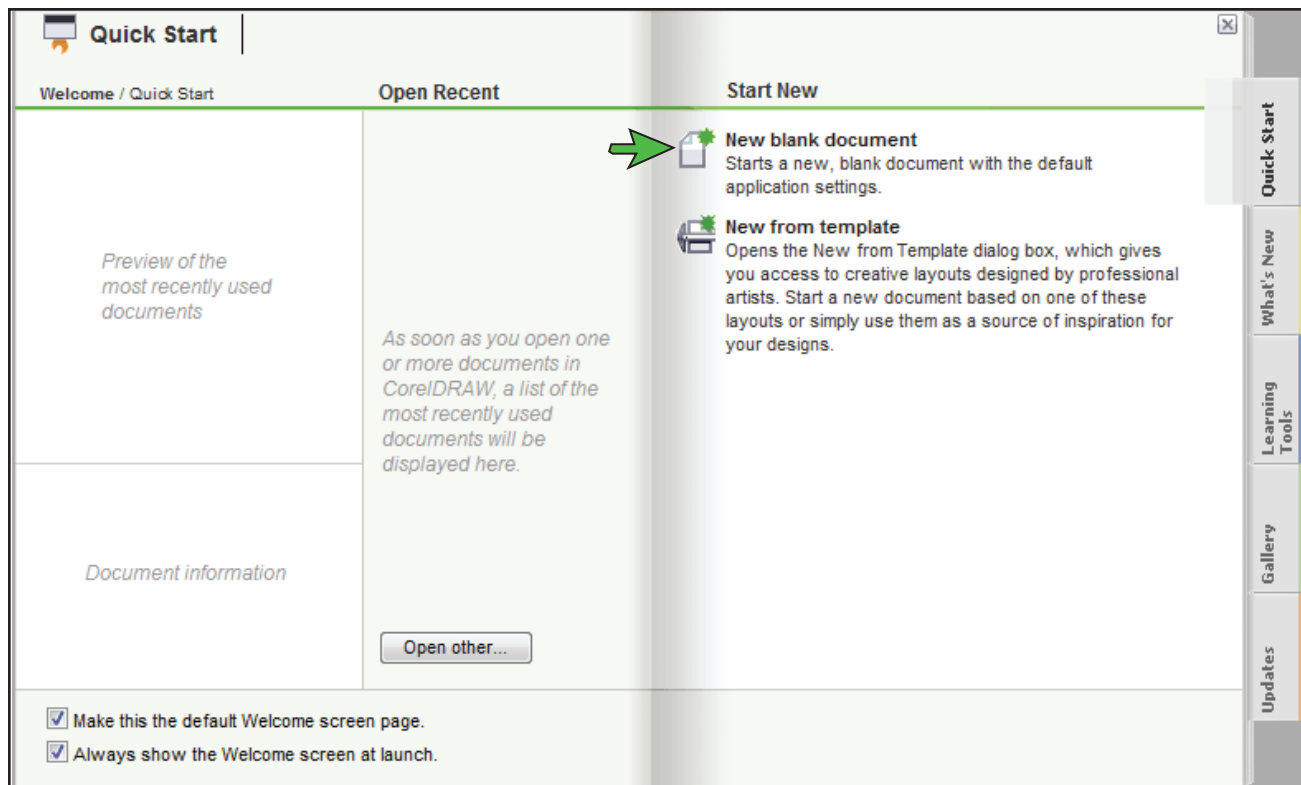


FIGURE 1

SubliJet IQ: Epson WF30
Setup and Print Guide: CoreIDRAW X5 (cont'd 2:6)

2.) Configure a New Document Workspace: (see FIGURE 2)

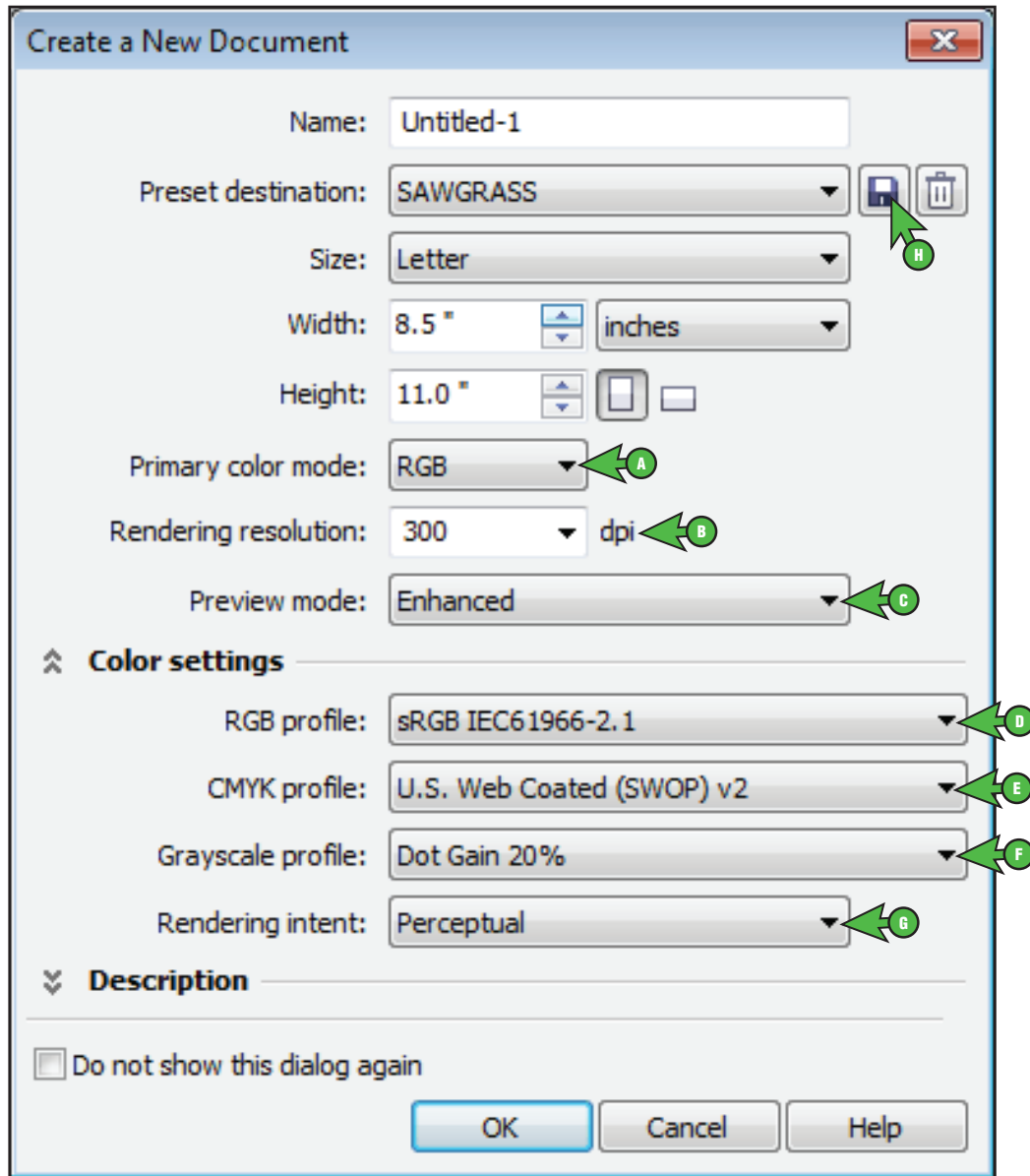


FIGURE 2

- | | |
|--|---|
| A. Primary color mode: RGB | E. CMYK profile: U.S. Web Coated (SWOP) v2 |
| B. Rendering resolution: 300 | F. Grayscale profile: Dot Gain 20% |
| C. Preview mode: Enhanced | G. Rendering intent: Perceptual |
| D. RGB profile: sRGB IEC61966-2.1 | H. Add Preset: Name your new preset |

SubliJet IQ: Epson WF30

Setup and Print Guide: CoreIDRAW X5 (cont'd 3:6)

3.) In the Menu Bar, click Tools > Color Management > Default Settings: (see FIGURE 3)

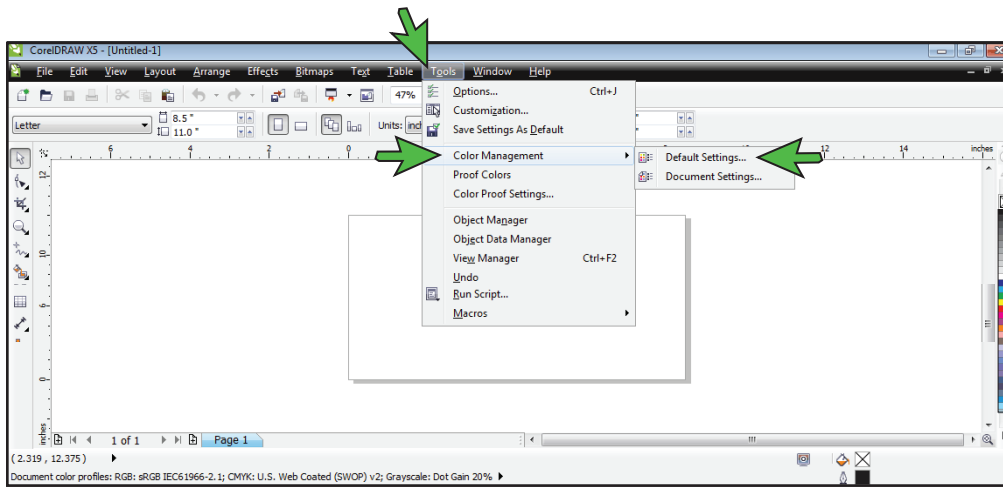


FIGURE 3

4.) The Default Color Management Settings window should now be open. Match your settings to the ones shown below: (see FIGURE 4)

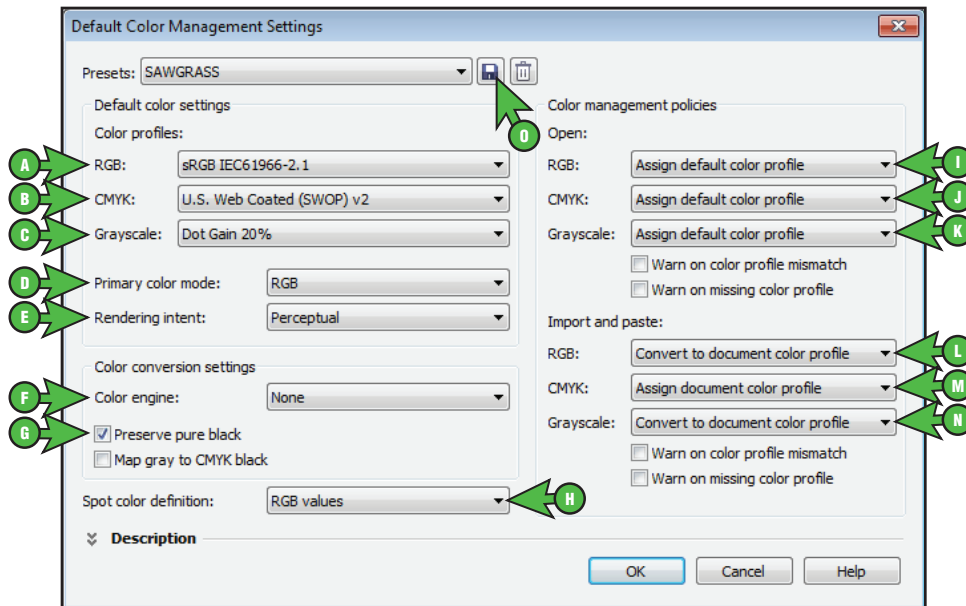


FIGURE 4

- | | |
|--|---|
| <ul style="list-style-type: none"> A. RGB: sRGB IEC61966-2.1 B. CMYK: U.S. Web Coated (SWOP) v2 C. Grayscale: Dot Gain 20% D. Primary color mode: RGB E. Rendering intent: Perceptual F. Color engine: None G. Check: Preserve pure black H. Spot color definition: RGB values | <ul style="list-style-type: none"> I. RGB: Assign default color profile J. CMYK: Assign default color profile K. Grayscale: Assign default color profile L. RGB: Convert to document color profile M. CMYK: Assign document color profile N. Grayscale: Convert to document color profile O. Add Preset: Name your new preset |
|--|---|

SubliJet IQ: Epson WF30

Setup and Print Guide: CoreIDRAW X5 (cont'd 4:6)

5.) In the Menu Bar, click Tools > Color Management > Document Settings: (see FIGURE 5)

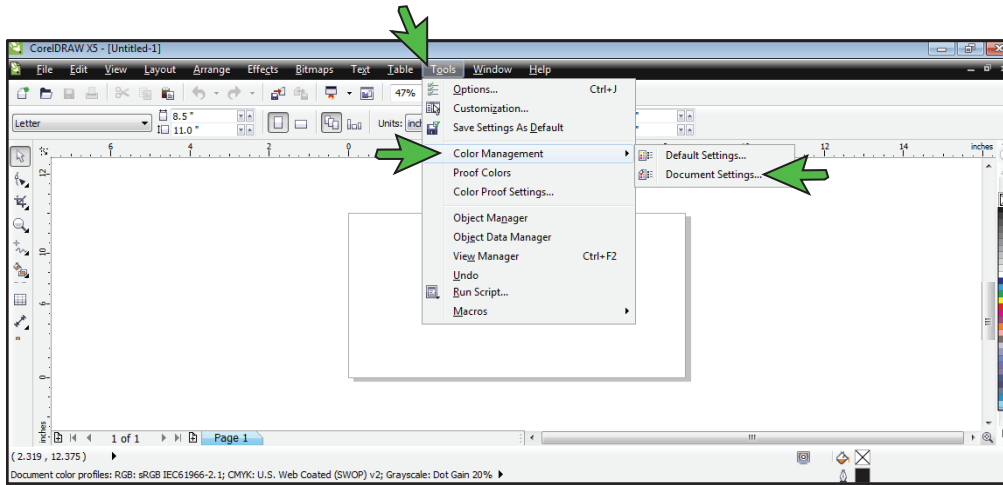


FIGURE 5

6.) The Document Color Settings window should now be open. Match your settings to the ones shown below: (see FIGURE 6)

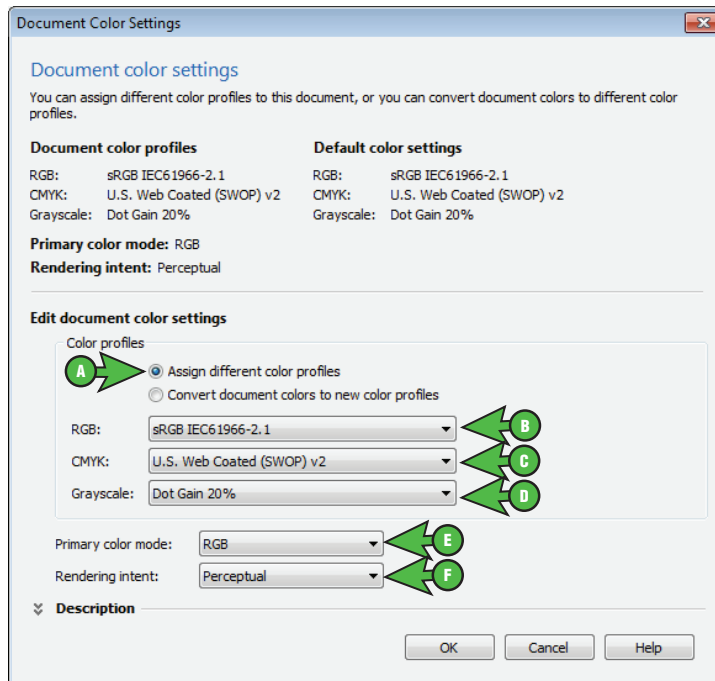


FIGURE 6

- | | |
|--|---|
| <p>A. Select the radio button: Assign different color profiles</p> <p>B. RGB: sRGB IEC61966-2.1</p> <p>C. CMYK: U.S. Web Coated (SWOP) v2</p> | <p>D. Grayscale: Dot Gain 20%</p> <p>E. Primary color mode: RGB</p> <p>F. Rendering intent: Perceptual</p> |
|--|---|

SubliJet IQ: Epson WF30 Setup and Print Guide: CoreIDRAW X5 (cont'd 5:6)

Printing from CoreIDRAW with PowerDriver IQ WorkForce 30

- 7.) Now that you have adjusted the Color Management settings, you are ready to print. Begin by opening an image in CoreIDRAW. In the Menu Bar, click File > Print (Ctrl + P). This will open the Print window. Match your settings to the ones shown below: (see FIGURE 7)

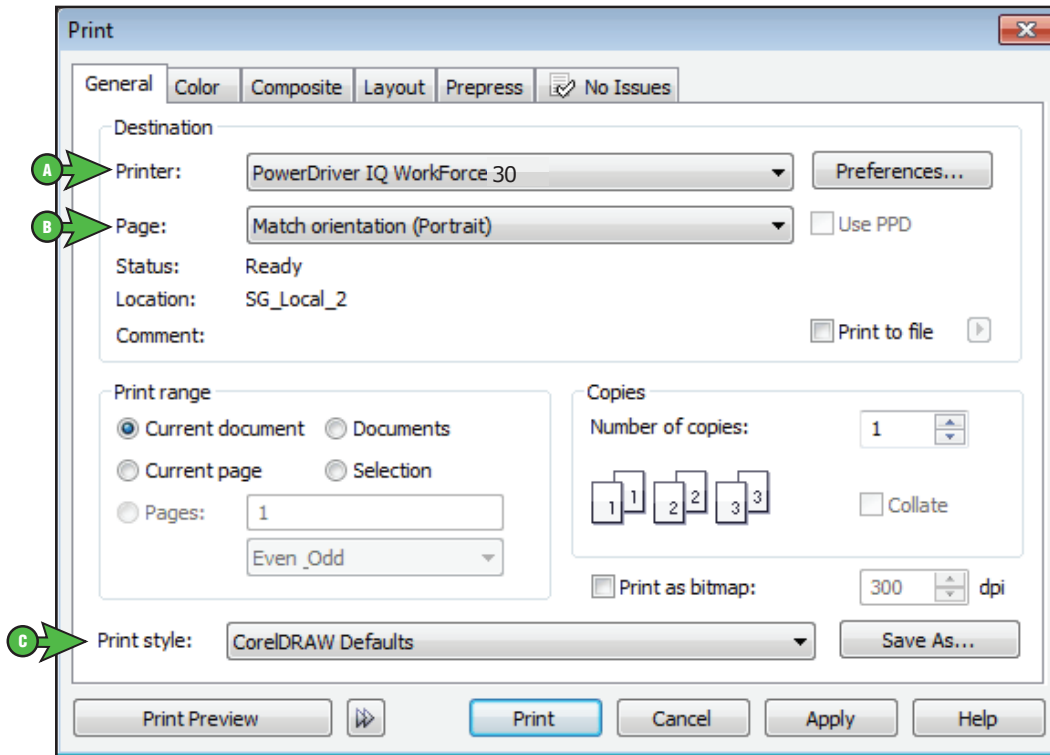


FIGURE 7

- A. Printer: **PowerDriver IQ WorkForce 30**
- B. Page: **Match orientation (Portrait)**
- C. Print style: **CoreIDRAW Defaults**

SubliJet IQ: Epson WF30 Setup and Print Guide: CoreIDRAW X5 (cont'd 6:6)

8.) In the Print window, click the Color tab and match your settings to the ones shown below: (see FIGURE 8)

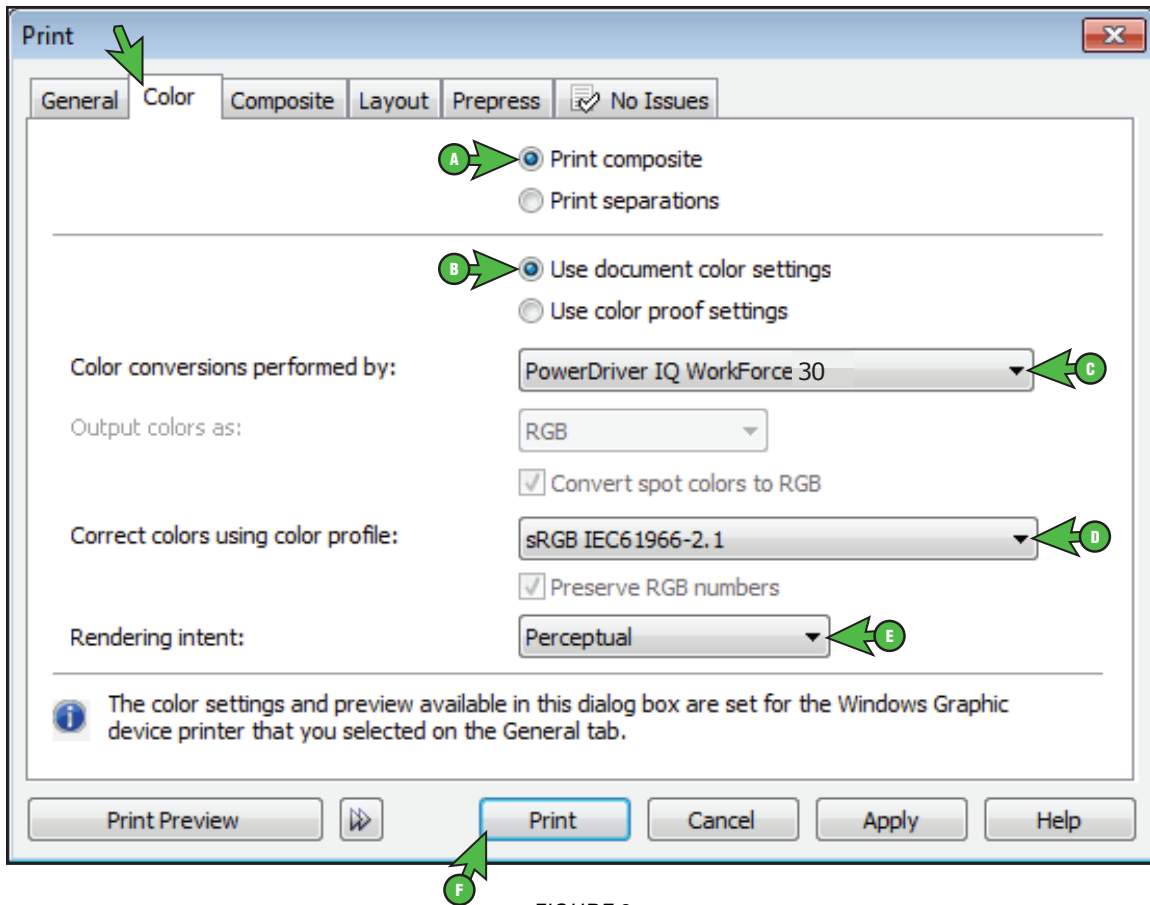


FIGURE 8

- A. Select the radio button: **Print composite**
- B. Select the radio button: **Use document color settings**
- C. Color conversions performed by: **PowerDriver IQ WorkForce 30**
- D. Correct colors using color profile: **sRGB IEC61966-2.1**
- E. Rendering intent: **Perceptual**
- F. Click **Print** when you are ready to print your image.

Congratulations! CoreIDRAW X5 Setup is now complete. Remember to select PowerDriver IQ WF30 each time you are ready to print.