

Epson WorkForce 1100

Setup and Print Guide: Photoshop 10, CS, CS2, CS3 & CS4

Before proceeding, please be sure you have the correct Epson OEM printer driver and PowerDriver IQ installed. For Assistance with driver installation, refer to the Installation Guide.

NOTE: Your screens and menus may differ depending on the version of software and operating system you are using. However, the settings will be the same.

Photoshop Setup Guide

Begin by opening a **New / Blank** page in Photoshop. At the top of the application click **Edit > Color Settings**. This will open the **Color Settings** window (see Figure 1).

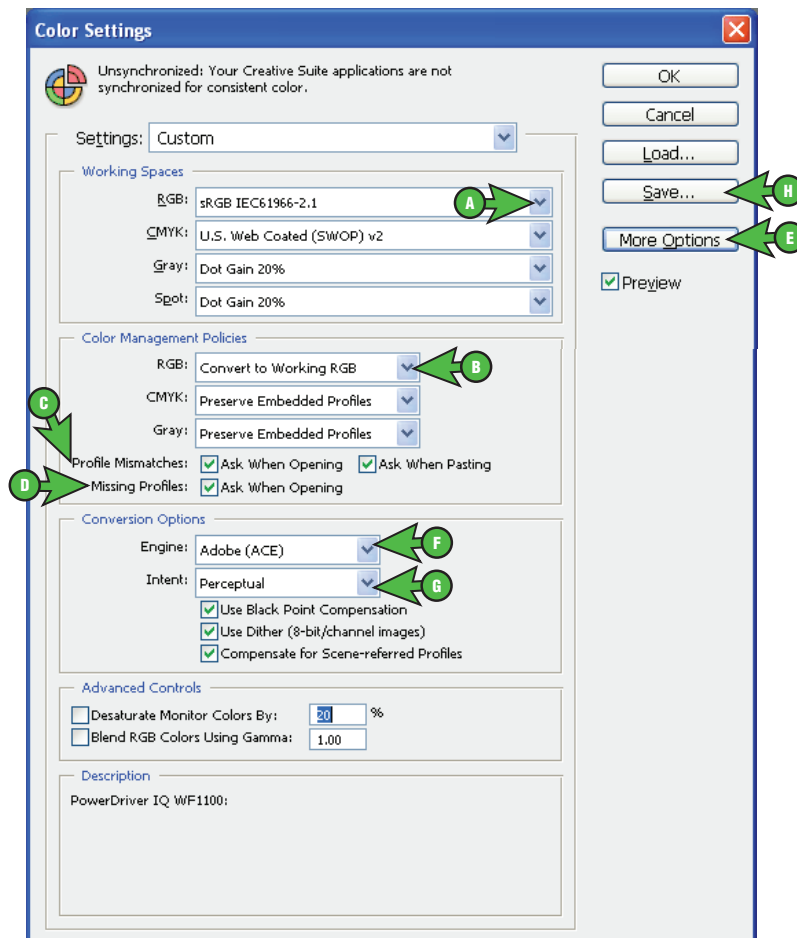


FIGURE 1

1.) Configuring Color Settings: (see Figure 1)

- a. **Working Spaces > RGB >** Click the [▼] drop-down arrow and select **sRGB IEC61966-2.1** (see Figure 1 > A).

SubliJet IQ: Epson WF1100 Setup and Print Guide – Photoshop 10, CS, CS2, CS3 & CS4 (cont'd 2:4)

- b. **Color Management Policies > RGB** > click the [▼] drop-down arrow and select **Convert to Working RGB** (see Figure 1 > B).
- c. **Color Management Policies > Profile Mismatches** > check **Ask When Opening** and also check **Ask When Pasting** (see Figure 1 > C).
- d. **Color Management Policies > Missing Profiles** > check **Ask When Opening** (see Figure 1 > D).
- e. If **Conversion Options** is not visible, click **More Options** (see Figure 1 > E).
- f. **Conversion Options > Engine** > click the [▼] drop-down arrow and select **Adobe (ACE)** (see Figure 1 > F).
- g. **Conversion Options > Intent** > click the [▼] drop-down arrow and select **Perceptual** (see Figure 1 > G).
- h. Once your settings match, click **Save** (see Figure 1 > H). This will open the **Save** window (see Figure 2). Type **PowerDriver IQ WF1100** in the **File Name** field (see Figure 2 > A) and click **Save** when complete (see Figure 2 > B).

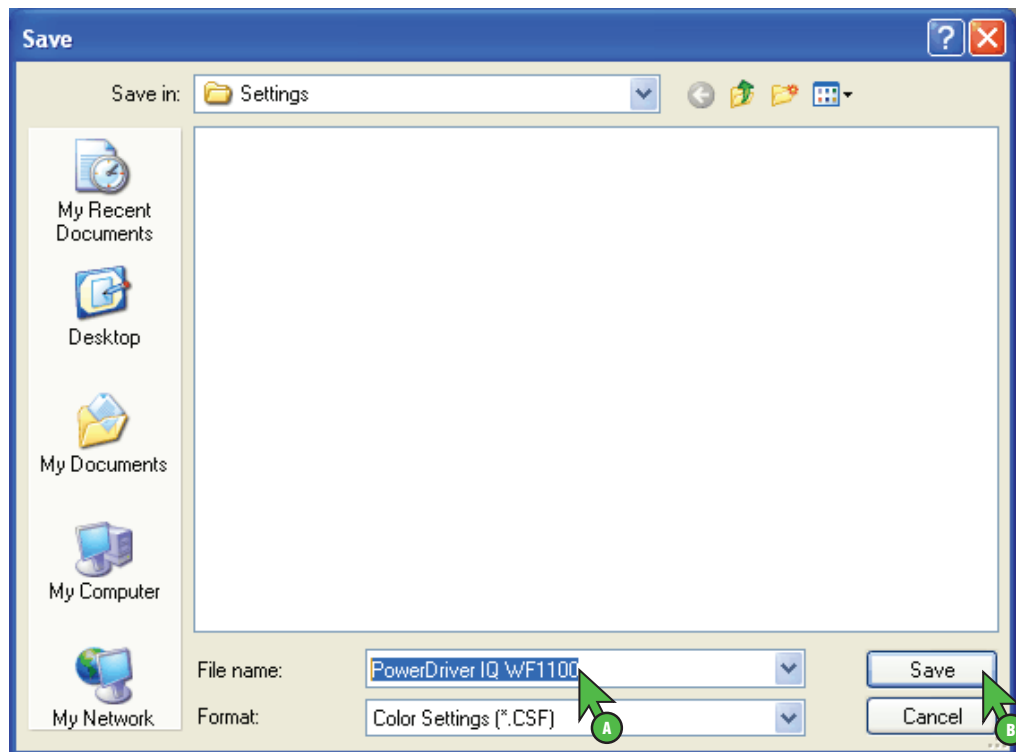


FIGURE 2

The Photoshop RGB Working Space is now set.

SubliJet IQ: Epson WF1100

Setup and Print Guide – Photoshop 10, CS, CS2, CS3 & CS4 (cont'd 3:4)

When opening images in Adobe Photoshop, you may encounter an **Embedded Profile Mismatch** warning (see Figure 3).

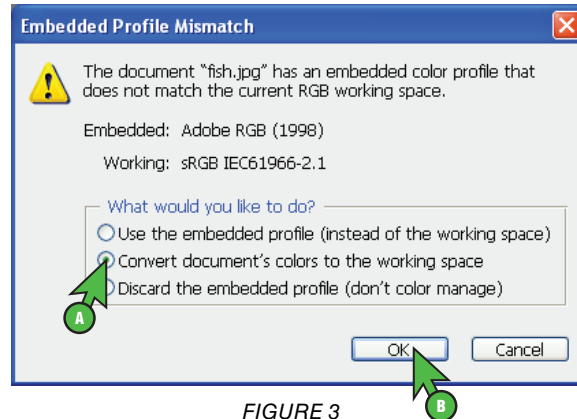


FIGURE 3

2. Convert to sRGB IEC61966-2.1: (see Figure 3)
 - a. Select the radio button for **Convert document's colors to the working space** (see Figure 3 > A).
 - b. Click **OK** to save changes and continue (see Figure 3 > B).

NOTE: Always choose to use or convert to sRGB IEC61966-2.1

Photoshop Print Guide

Begin by opening an image in Photoshop. At the top of the application click **File > Print**. This will open the **Print** window (see Figure 4).

NOTE: If you are using versions older than CS4, you will need to click **File > Print with Preview**. Also, your screens may not exactly resemble the ones shown, but the settings will be the same.

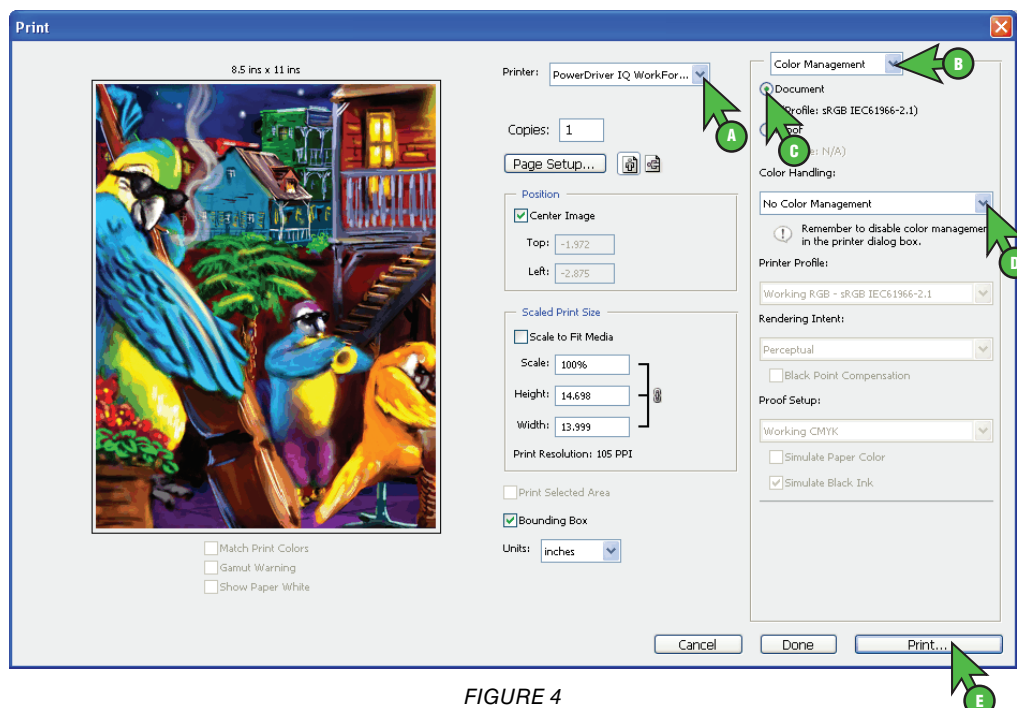


FIGURE 4

SubliJet IQ: Epson WF1100 Setup and Print Guide – Photoshop 10, CS, CS2, CS3 & CS4 (cont'd 4:4)

1. Configure Photoshop Print Settings: (see Figure 4)
 - a. Click the [▼] drop-down arrow and select your **PowerDriver IQ WorkForce 1100** (see Figure 4 > A).
 - b. Click the [▼] drop-down arrow and select **Color Management** (see Figure 4 > B).
 - c. Select the [●] radio button for **Document** (see Figure 4 > C).
 - d. Click the [▼] drop-down arrow and select **No Color Management** (see Figure 4 > D).
 - e. Click **Print** when you have entered the correct settings (see Figure 4 > E). The following Epson **Print** window will open (see Figure 5).
 - f. Select printer **PowerDriver IQ WorkForce 1100** (see Figure 5 > A)
 - g. You can begin printing your image by clicking **Print** (see Figure 5 > B).

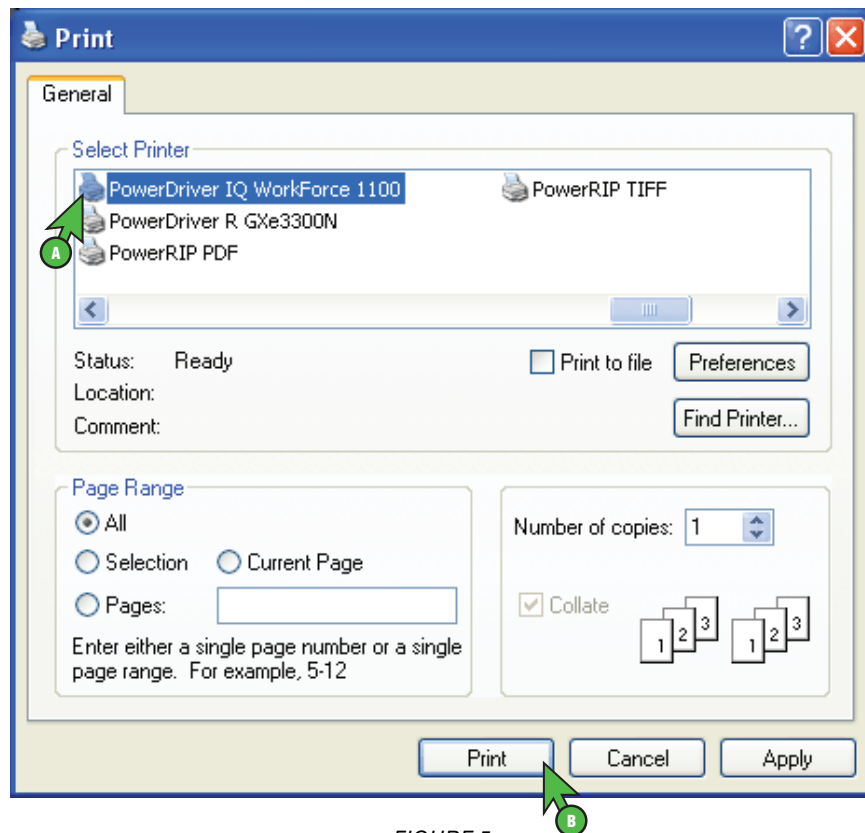


FIGURE 5

Congratulations! Photoshop setup is now complete. Remember to select PowerDriver IQ WorkForce 1100 each time you are ready to print.