

# Epson WorkForce 1100

## Setup and Print Guide: CoreIDRAW X5

*NOTE: Before proceeding, please be sure you have the correct OEM driver and PowerDriver IQ installed. For assistance with driver installation, refer to the Installation Guide: Epson WorkForce 1100 .*

### CoreIDRAW X5 Setup Guide

1.) Open a New Page in CoreIDRAW: (see FIGURE 1)

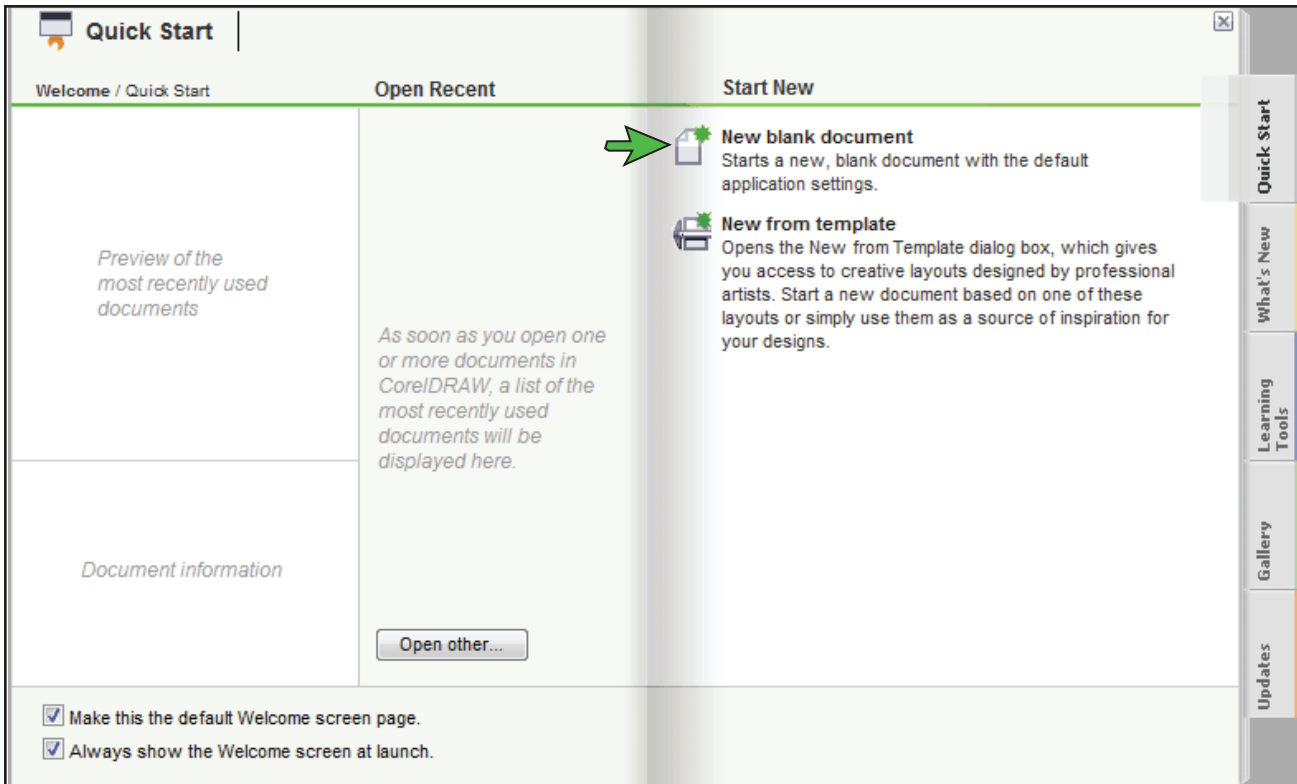


FIGURE 1

SubliJet IQ: Epson WF1100  
Setup and Print Guide: CoreIDRAW X5 (cont'd 2:6)

2.) Configure a New Document Workspace: (see FIGURE 2)

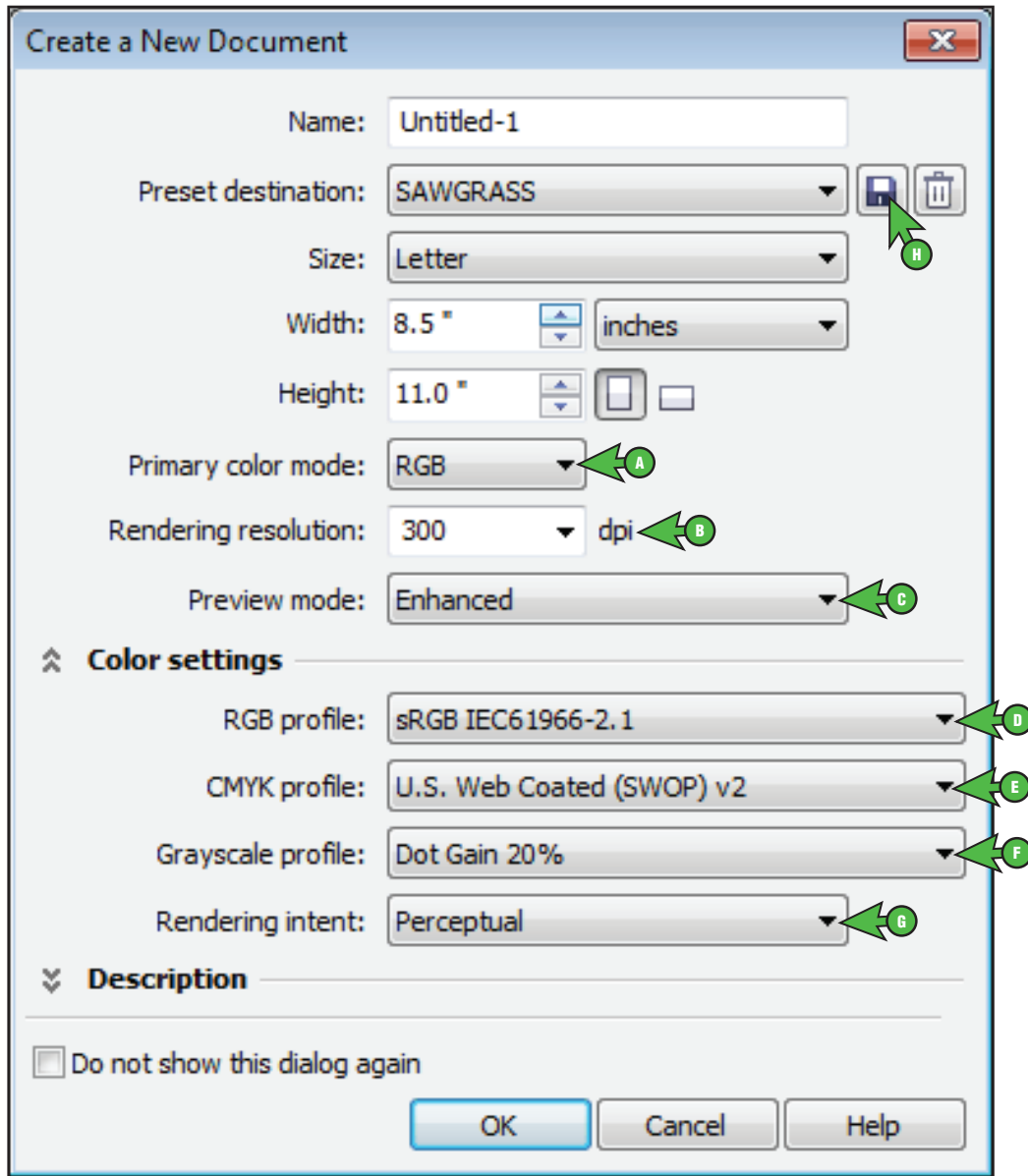


FIGURE 2

- |  |   |
|--|---|
| A. Primary color mode: <b>RGB</b>        | E. CMYK profile: <b>U.S. Web Coated (SWOP) v2</b> |
| B. Rendering resolution: <b>300</b>      | F. Grayscale profile: <b>Dot Gain 20%</b>         |
| C. Preview mode: <b>Enhanced</b>         | G. Rendering intent: <b>Perceptual</b>            |
| D. RGB profile: <b>sRGB IEC61966-2.1</b> | H. Add Preset: <b>Name your new preset</b>        |

# SubliJet IQ: Epson WF1100

## Setup and Print Guide: CoreIDRAW X5 (cont'd 3:6)

3.) In the Menu Bar, click Tools > Color Management > Default Settings: (see FIGURE 3)

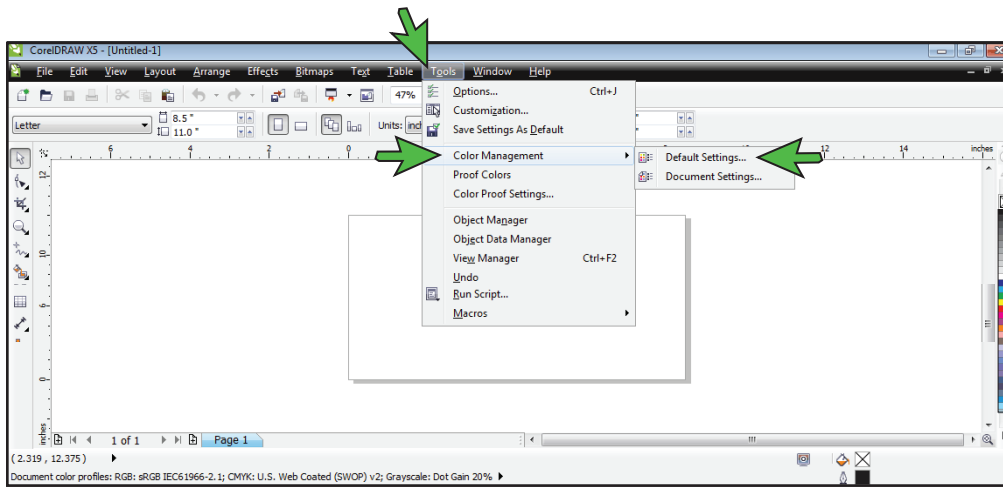


FIGURE 3

4.) The Default Color Management Settings window should now be open. Match your settings to the ones shown below: (see FIGURE 4)

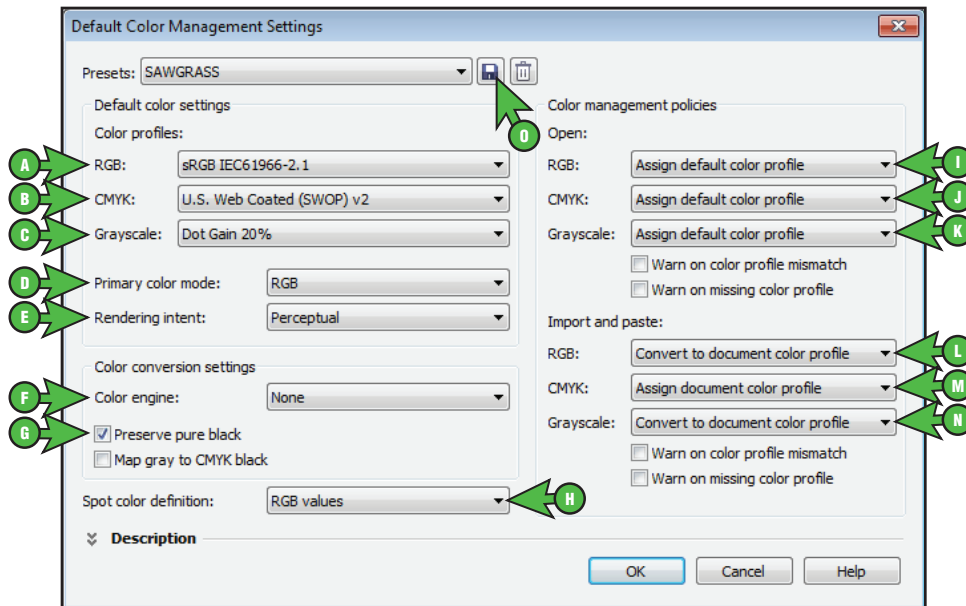


FIGURE 4

- |  |   |
|--|---|
| <ul style="list-style-type: none"> <li>A. RGB: <b>sRGB IEC61966-2.1</b></li> <li>B. CMYK: <b>U.S. Web Coated (SWOP) v2</b></li> <li>C. Grayscale: <b>Dot Gain 20%</b></li> <li>D. Primary color mode: <b>RGB</b></li> <li>E. Rendering intent: <b>Perceptual</b></li> <li>F. Color engine: <b>None</b></li> <li>G. Check: <b>Preserve pure black</b></li> <li>H. Spot color definition: <b>RGB values</b></li> </ul> | <ul style="list-style-type: none"> <li>I. RGB: <b>Assign default color profile</b></li> <li>J. CMYK: <b>Assign default color profile</b></li> <li>K. Grayscale: <b>Assign default color profile</b></li> <li>L. RGB: <b>Convert to document color profile</b></li> <li>M. CMYK: <b>Assign document color profile</b></li> <li>N. Grayscale: <b>Convert to document color profile</b></li> <li>O. Add Preset: <b>Name your new preset</b></li> </ul> |
|--|---|

# SubliJet IQ: Epson WF1100 Setup and Print Guide: CoreIDRAW X5 (cont'd 4:6)

5.) In the Menu Bar, click Tools > Color Management > Document Settings: (see FIGURE 5)

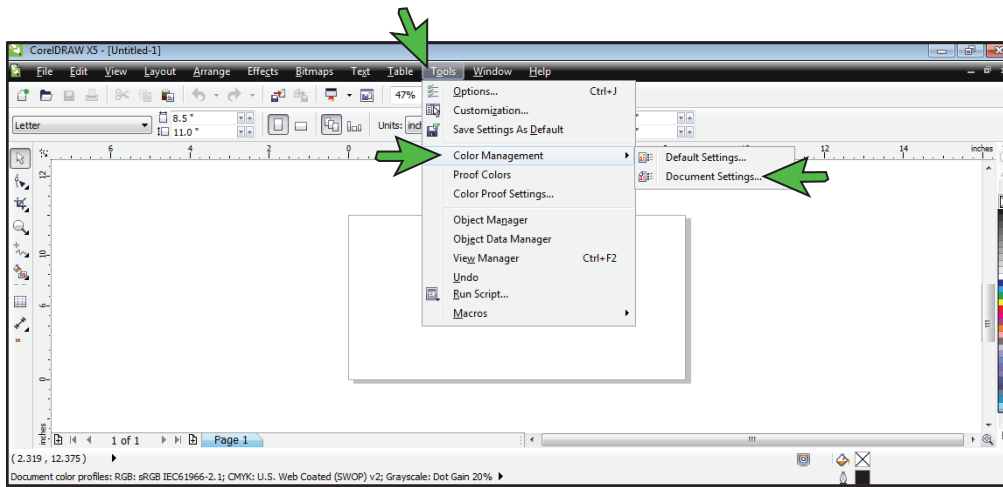


FIGURE 5

6.) The Document Color Settings window should now be open. Match your settings to the ones shown below: (see FIGURE 6)

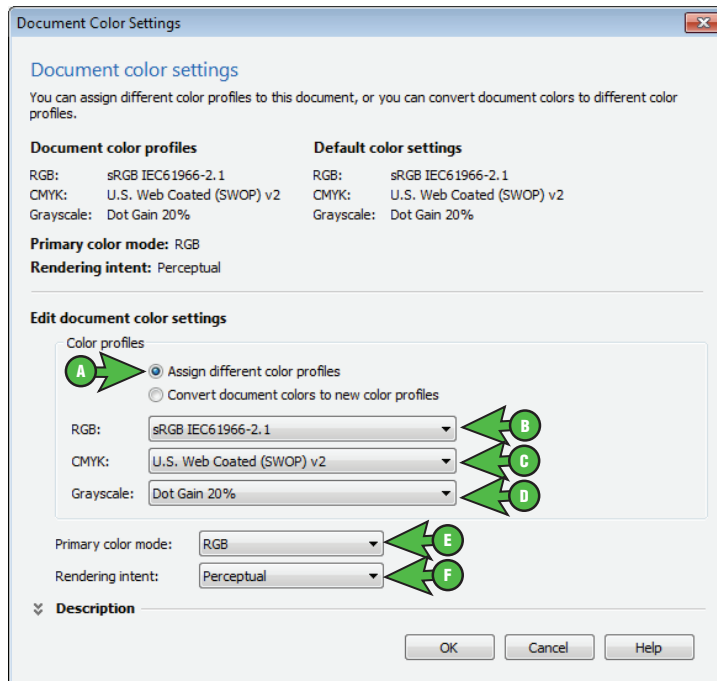


FIGURE 6

- A. Select the radio button: **Assign different color profiles**
- B. RGB: **sRGB IEC61966-2.1**
- C. CMYK: **U.S. Web Coated (SWOP) v2**
- D. Grayscale: **Dot Gain 20%**
- E. Primary color mode: **RGB**
- F. Rendering intent: **Perceptual**

# SubliJet IQ: Epson WF1100

## Setup and Print Guide: CoreIDRAW X5 (cont'd 5:6)

### Printing from CoreIDRAW with PowerDriver IQ WorkForce 1100

- 7.) Now that you have adjusted the Color Management settings, you are ready to print. Begin by opening an image in CoreIDRAW. In the Menu Bar, click File > Print (Ctrl + P). This will open the Print window. Match your settings to the ones shown below: (see FIGURE 7)

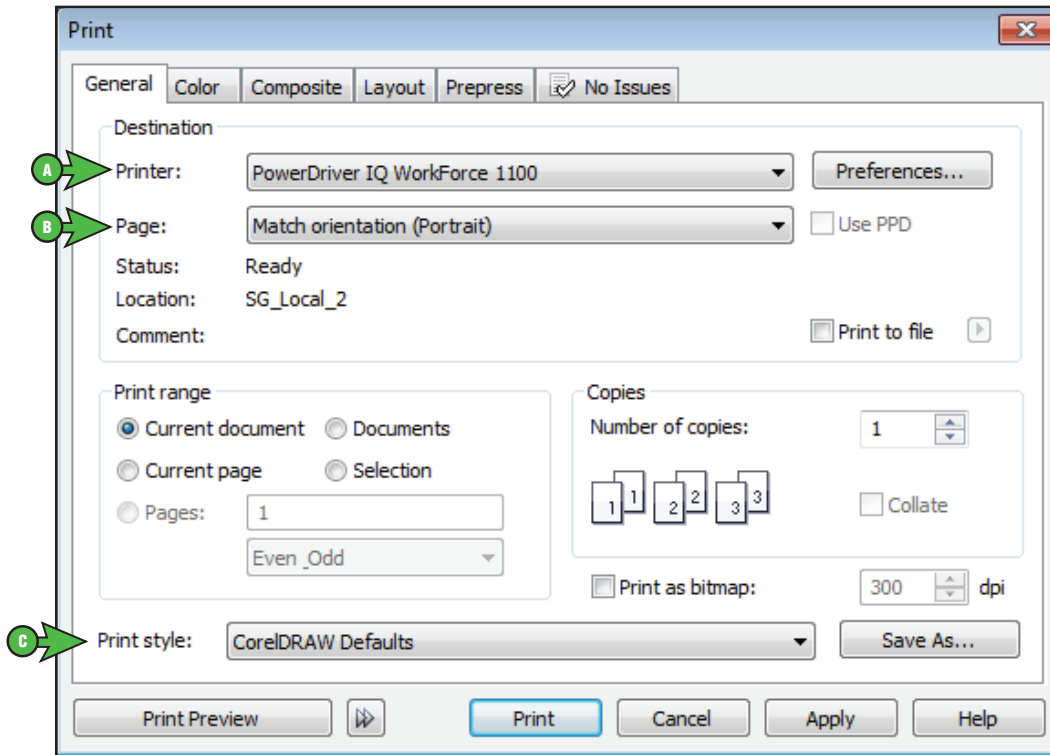


FIGURE 7

- A. Printer: **PowerDriver IQ WorkForce 1100**
- B. Page: **Match orientation (Portrait)**
- C. Print style: **CoreIDRAW Defaults**

## SubliJet IQ: Epson WF1100 Setup and Print Guide: CoreIDRAW X5 (cont'd 6:6)

8.) In the Print window, click the Color tab and match your settings to the ones shown below: (see FIGURE 8)

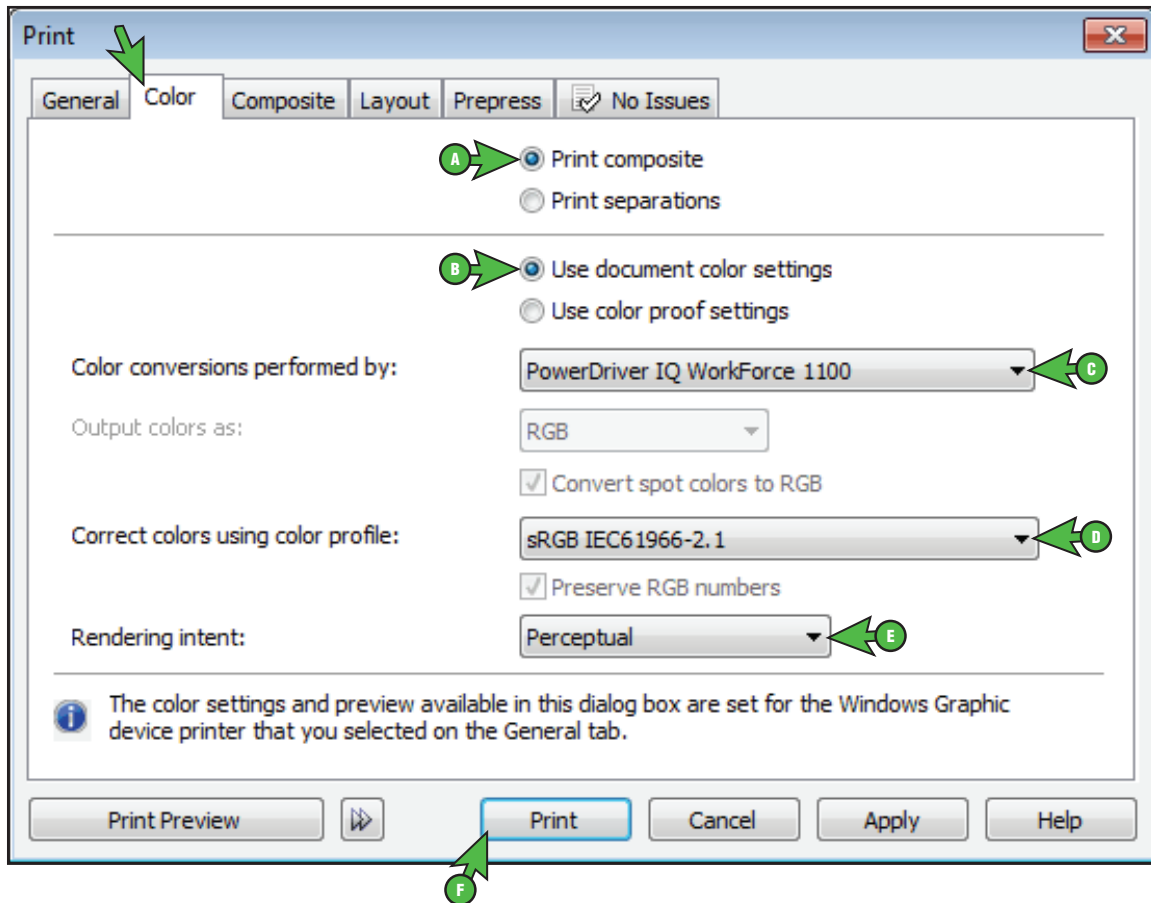


FIGURE 8

- A. Select the radio button: **Print composite**
- B. Select the radio button: **Use document color settings**
- C. Color conversions performed by: **PowerDriver IQ WorkForce 1100**
- D. Correct colors using color profile: **sRGB IEC61966-2.1**
- E. Rendering intent: **Perceptual**
- F. Click **Print** when you are ready to print your image.

**Congratulations!** CoreIDRAW X5 Setup is now complete. Remember to select PowerDriver-IQ WF1100 each time you are ready to print.