

Epson Stylus Photo R1900

Setup and Print Guide: CoreIDRAW X5

NOTE: Before proceeding, please be sure you have the correct OEM driver and PowerDriver XG-8 R1900 installed. For Assistance with driver installation, refer to the Getting Started Guide.

CoreIDRAW X5 Setup Guide

1.) Open a New Page in CoreIDRAW: (see FIGURE 1)

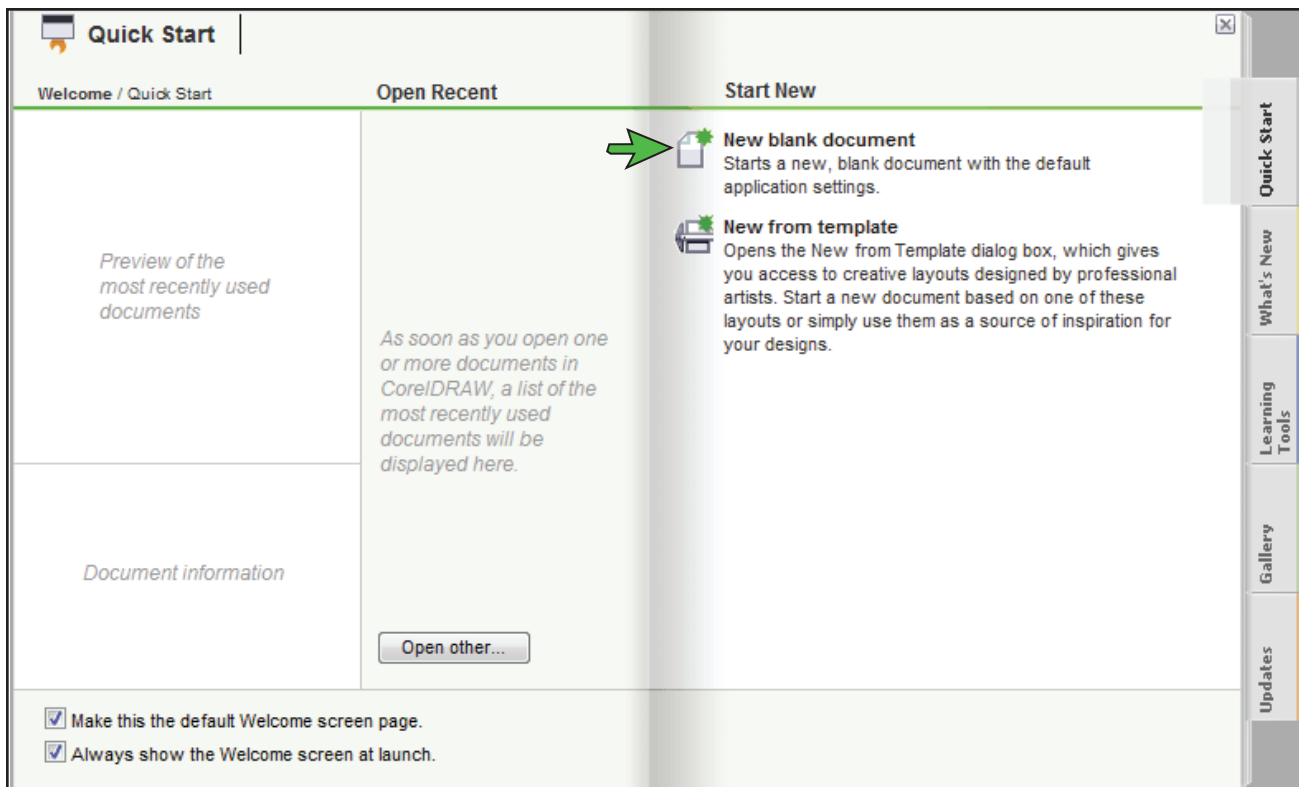


FIGURE 1

SubliJet IQ: Epson Stylus Photo R1900 Setup and Print Guide: CoreIDRAW X5 (cont'd 2:6)

2.) Configure a New Document Workspace: (see FIGURE 2)

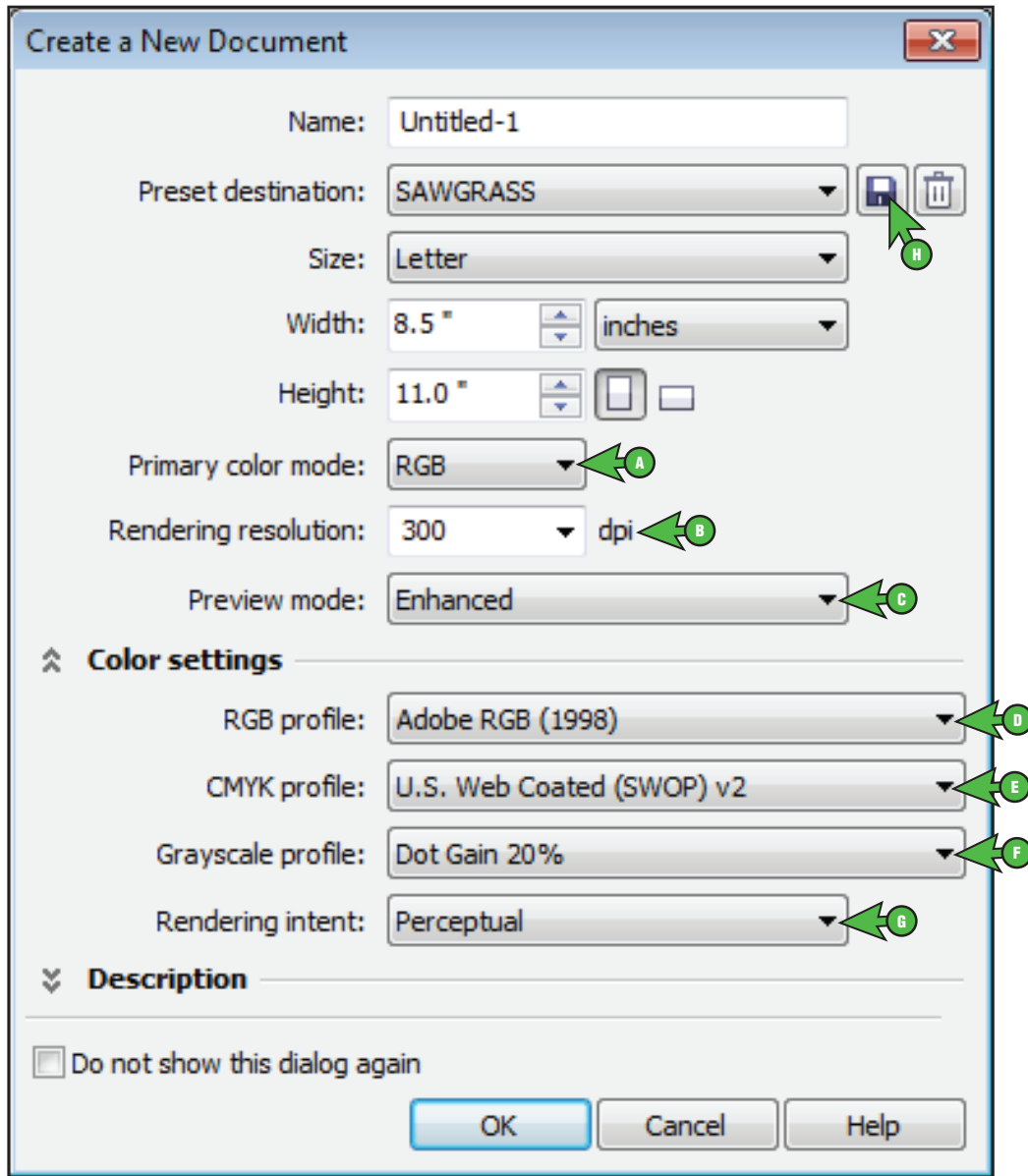


FIGURE 2

- A. Primary color mode: **RGB**
- B. Rendering resolution: **300**
- C. Preview mode: **Enhanced**
- D. RGB profile: **Adobe RGB (1998)**
- E. CMYK profile: **U.S. Web Coated (SWOP) v2**
- F. Grayscale profile: **Dot Gain 20%**
- G. Rendering intent: **Perceptual**
- H. Add Preset: **Name your new preset**

SubliJet IQ: Epson Stylus Photo R1900

Setup and Print Guide: CoreIDRAW X5 (cont'd 3:6)

3.) In the Menu Bar, click Tools > Color Management > Default Settings: (see FIGURE 3)

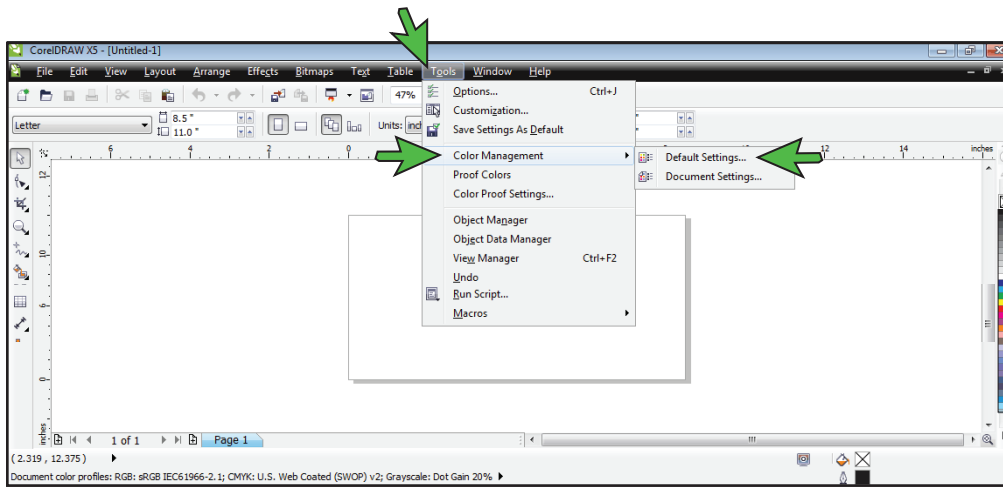


FIGURE 3

4.) The Default Color Management Settings window should now be open. Match your settings to the ones shown below: (see FIGURE 4)

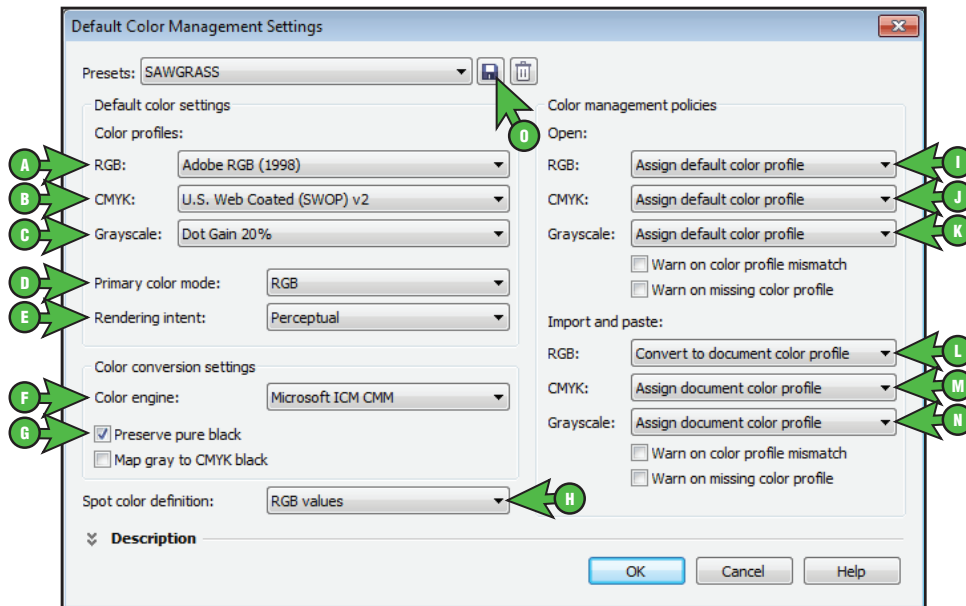


FIGURE 4

- | | |
|--|---|
| <ul style="list-style-type: none"> A. RGB: Adobe RGB (1998) B. CMYK: U.S. Web Coated (SWOP) v2 C. Grayscale: Dot Gain 20% D. Primary color mode: RGB E. Rendering intent: Perceptual F. Color engine: Microsoft ICM CMM G. Check: Preserve pure black H. Spot color definition: RGB values | <ul style="list-style-type: none"> I. RGB: Assign default color profile J. CMYK: Assign default color profile K. Grayscale: Assign default color profile L. RGB: Convert to document color profile M. CMYK: Assign document color profile N. Grayscale: Assign document color profile O. Add Preset: Name your new preset |
|--|---|

SubliJet IQ: Epson Stylus Photo R1900

Setup and Print Guide: CoreIDRAW X5 (cont'd 4:6)

5.) In the Menu Bar, click Tools > Color Management > Document Settings: (see FIGURE 5)

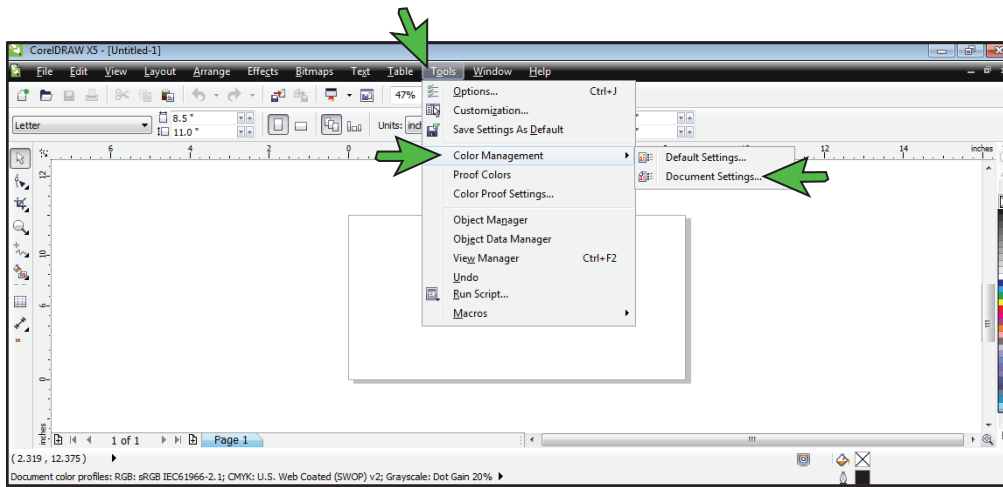


FIGURE 5

6.) The Document Color Settings window should now be open. Match your settings to the ones shown below: (see FIGURE 6)

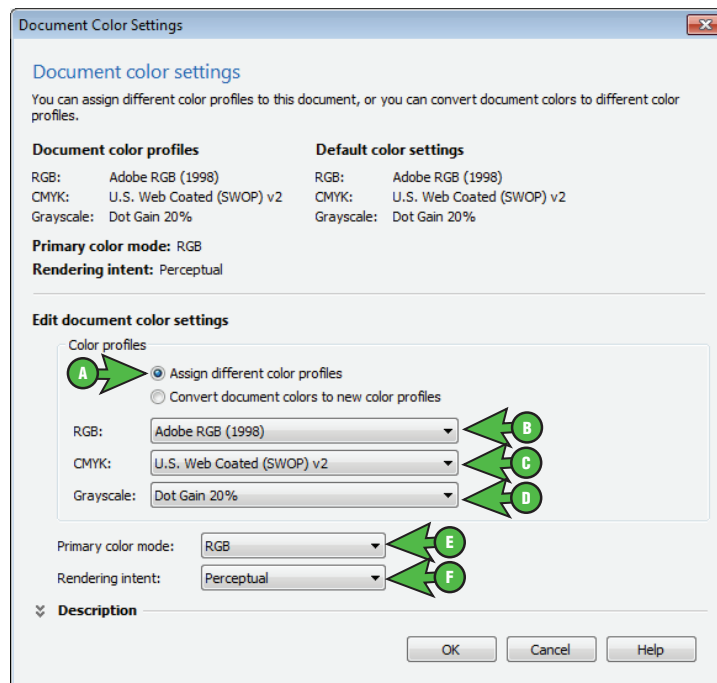


FIGURE 6

- A. Select the radio button: **Assign different color profiles**
- B. RGB: **Adobe RGB (1998)**
- C. CMYK: **U.S. Web Coated (SWOP) v2**
- D. Grayscale: **Dot Gain 20%**
- E. Primary color mode: **RGB**
- F. Rendering intent: **Perceptual**

SubliJet IQ: Epson Stylus Photo R1900

Setup and Print Guide: CoreIDRAW X5 (cont'd 5:6)

Printing from CoreIDRAW with PowerDriver XG-8 R1900

- 7.) Now that you have adjusted the Color Management settings, you are ready to print. Begin by opening an image in CoreIDRAW. In the Menu Bar, click **File > Print (Ctrl + P)**. This will open the **Print** window. Match your settings to the ones shown below: (see **FIGURE 7**)

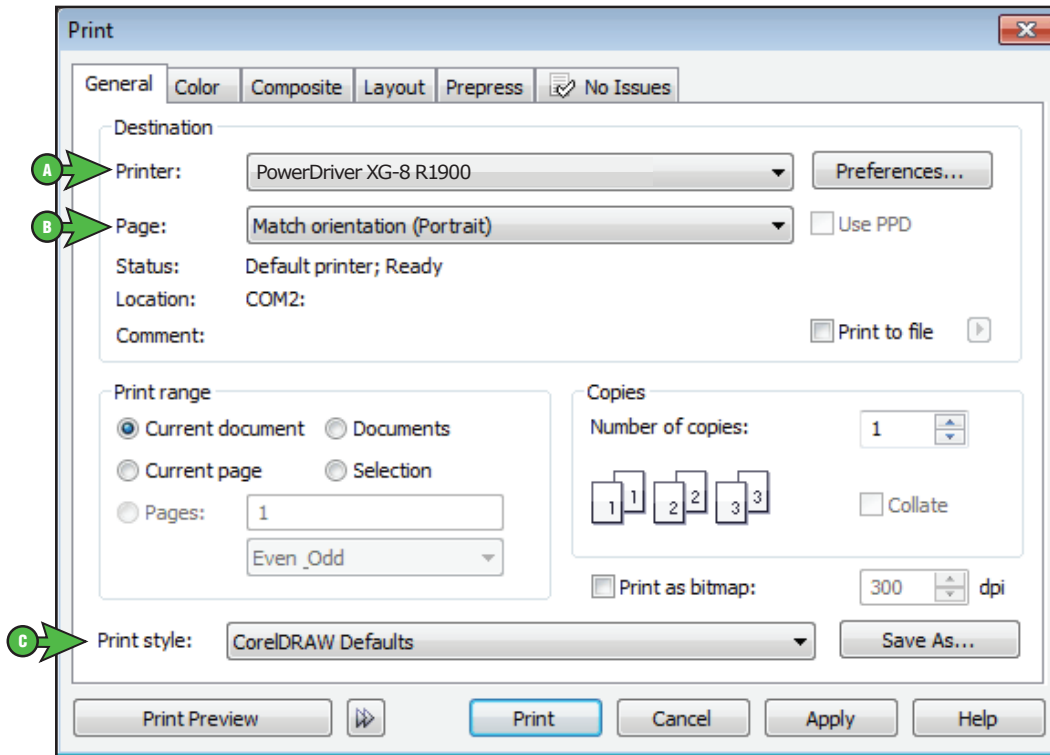


FIGURE 7

- A. Printer: **PowerDriver XG-8 R1900**
- B. Page: **Match orientation (Portrait)**
- C. Print style: **CoreIDRAW Defaults**

SubliJet IQ: Epson Stylus Photo R1900 Setup and Print Guide: CoreIDRAW X5 (cont'd 6:6)

8.) In the Print window, click the Color tab and match your settings to the ones shown below: (see FIGURE 8)

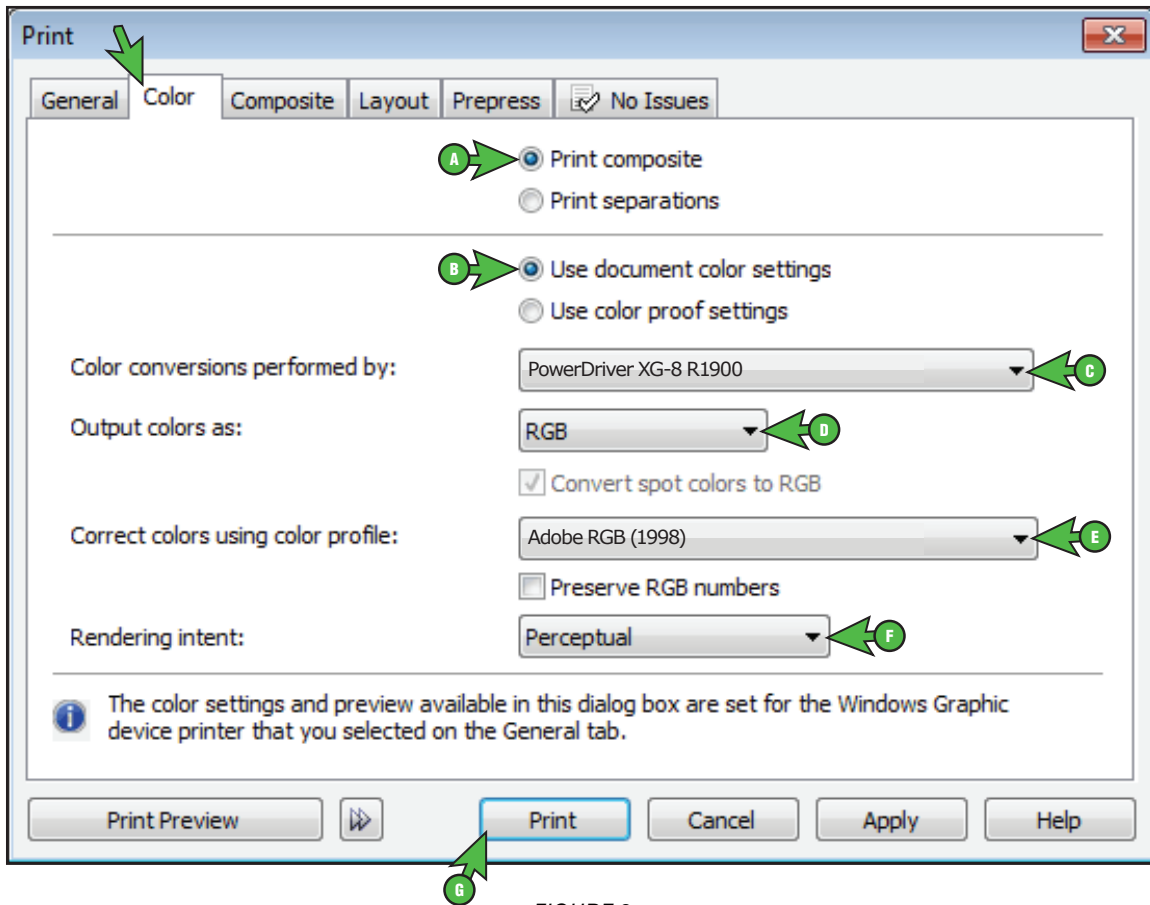


FIGURE 8

- A. Select the radio button: **Print composite**
- B. Select the radio button: **Use document color settings**
- C. Color conversions performed by: **PowerDriver XG-8 R1900**
- D. Output colors as: **RGB**
- E. Correct colors using color profile: **Adobe RGB (1998)**
- F. Rendering intent: **Perceptual**
- G. Click **Print** when you are ready to print your image.

Congratulations! CoreIDRAW X5 Setup is now complete. Remember to select PowerDriver XG-8 R1900 each time you are ready to print.