

# Ricoh GX 7000 - PowerDriver-R

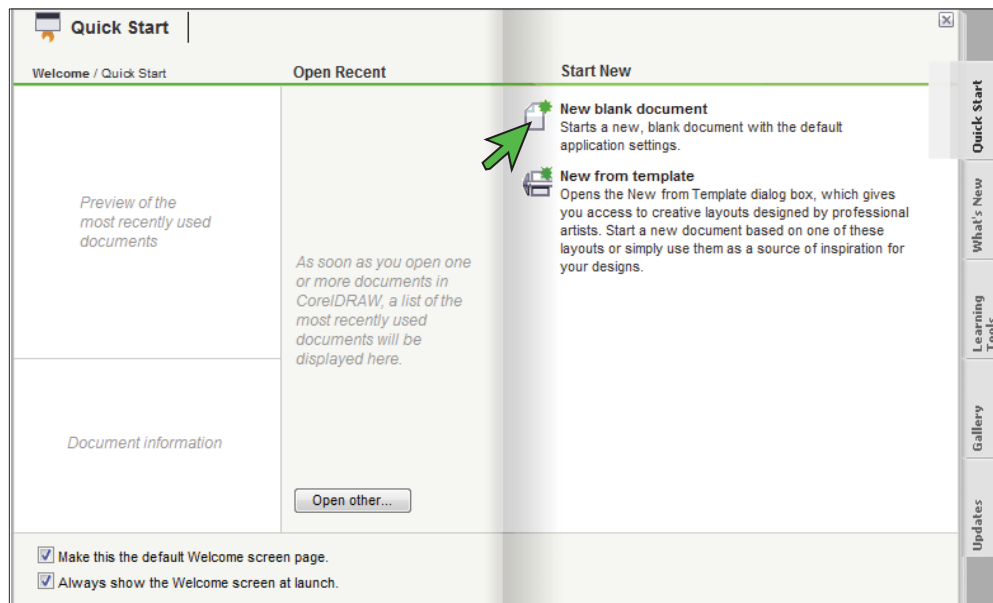
## Setup and Print Guide: CoreIDRAW X5 & X6

**IMPORTANT:** Before proceeding, ensure the correct Ricoh (OEM) printer driver and PowerDriver-R have been installed. For assistance with driver installation, refer to the Installation Guide.

**NOTE:** Your screens and menus may differ depending on the version of software and operating system you are using. However, the settings will be the same.

### CoreIDRAW Workspace Setup

- 1.) Open a New Page in CoreIDRAW (see *FIGURE 1*).



**FIGURE 1**

SubliJet-R: Ricoh GX7000 - PowerDriver-R  
**Setup and Print Guide: CorelDRAW X5 & X6**

2.) Configure a New Document Workspace with the settings shown below (see FIGURE 2).

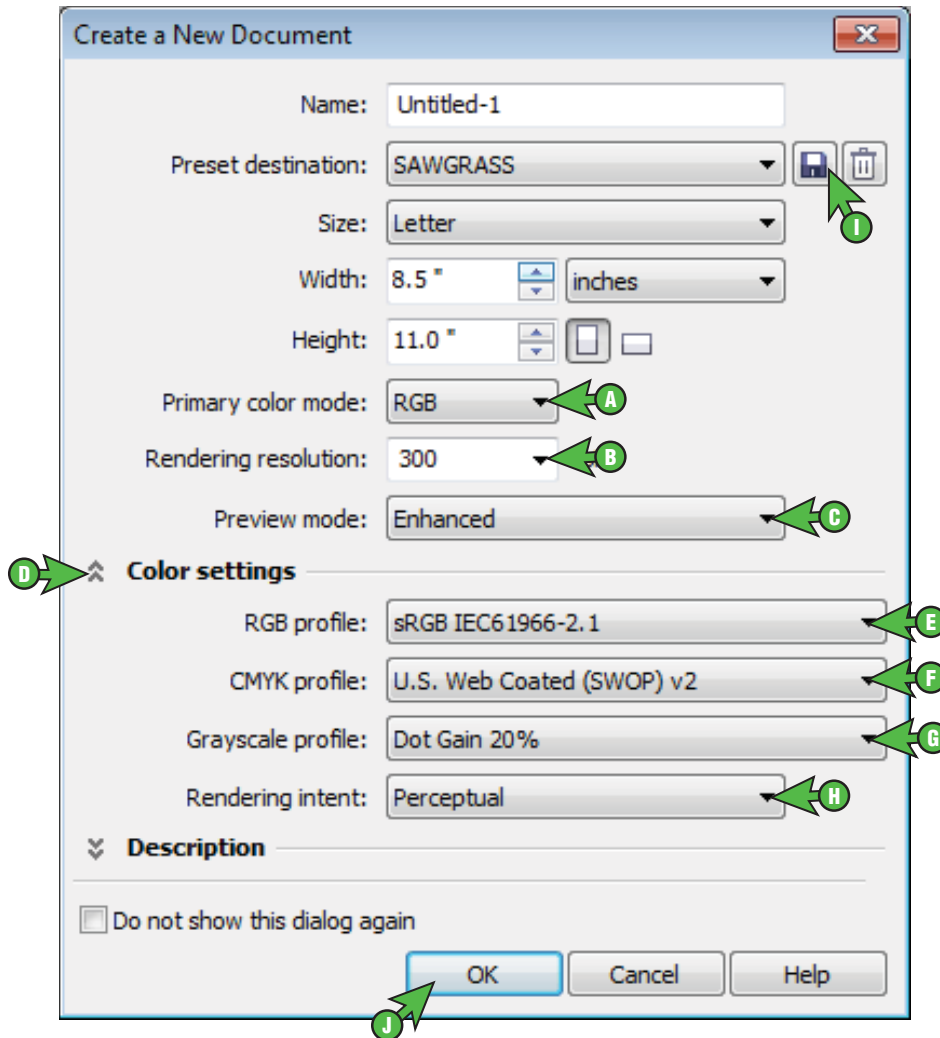


FIGURE 2

- |  |   |
|--|---|
| A. Primary color mode: <b>RGB</b>              | F. CMYK profile: <b>U.S. Web Coated (SWOP) v2</b> |
| B. Rendering resolution: <b>300</b>            | G. Grayscale profile: <b>Dot Gain 20%</b>         |
| C. Preview mode: <b>Enhanced</b>               | H. Rendering intent: <b>Perceptual</b>            |
| D. Click the down arrow to view Color Settings | I. Add Preset: <b>Name your new preset</b>        |
| E. RGB profile: <b>sRGB IEC61966-2.1</b>       | J. Click <b>OK</b> to continue                    |

# SubliJet-R: Ricoh GX7000 - PowerDriver-R

## Setup and Print Guide: CorelDRAW X5 & X6

- 3.) In the Menu Bar, click **Tools > Color Management > Default Settings** (see FIGURE 3).

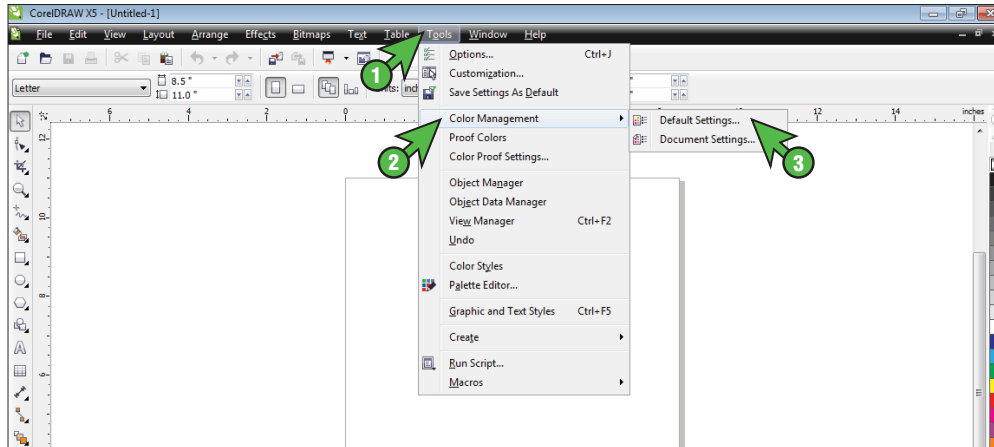


FIGURE 3

- 4.) In the Default Color Management Settings window, match your settings to those shown below (see FIGURE 4).

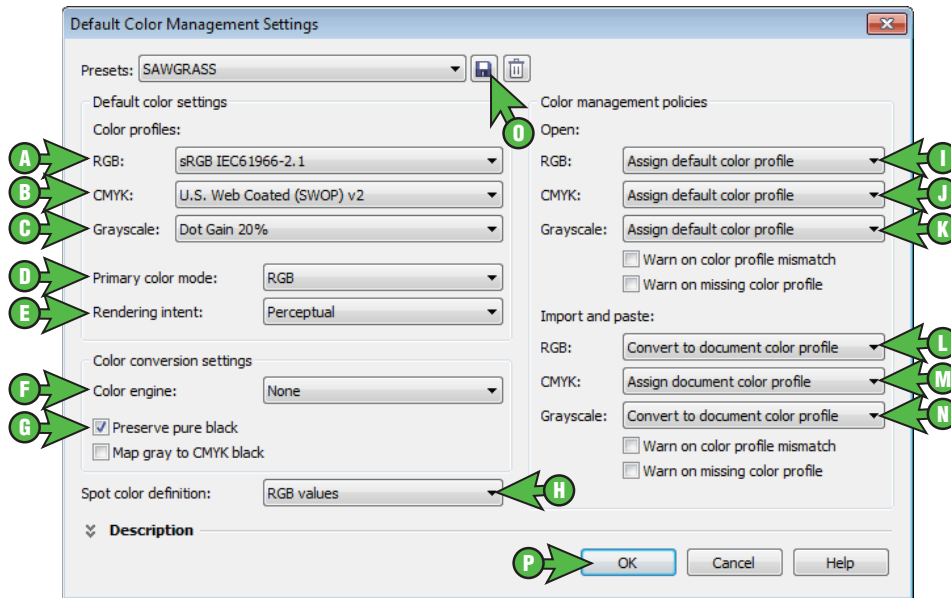


FIGURE 4

- |   |  |
|---|--|
| A. RGB: <b>sRGB IEC61966-2.1</b>            | I. RGB: <b>Assign default color profile</b>            |
| B. CMYK: <b>U.S. Web Coated (SWOP) v2</b>   | J. CMYK: <b>Assign default color profile</b>           |
| C. Grayscale: <b>Dot Gain 20%</b>           | K. Grayscale: <b>Assign default color profile</b>      |
| D. Primary color mode: <b>RGB</b>           | L. RGB: <b>Convert to document color profile</b>       |
| E. Rendering intent: <b>Perceptual</b>      | M. CMYK: <b>Assign document color profile</b>          |
| F. Color engine: <b>None</b>                | N. Grayscale: <b>Convert to document color profile</b> |
| G. Check: <b>Preserve pure black</b>        |  |
| H. Spot color definition: <b>RGB values</b> |  |
|   | P. Click <b>OK</b> to continue                         |

# SubliJet-R: Ricoh GX7000 - PowerDriver-R

## Setup and Print Guide: CorelDRAW X5 & X6

- 5.) In the Menu Bar, click **Tools > Color Management > Document Settings** (see FIGURE 5).

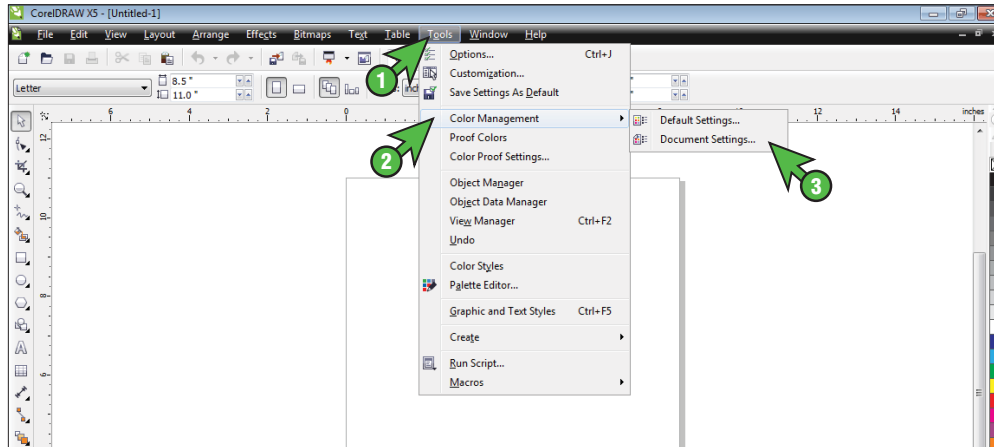


FIGURE 5

- 6.) In the Document Color Settings window, match your settings to those shown below (see FIGURE 6).

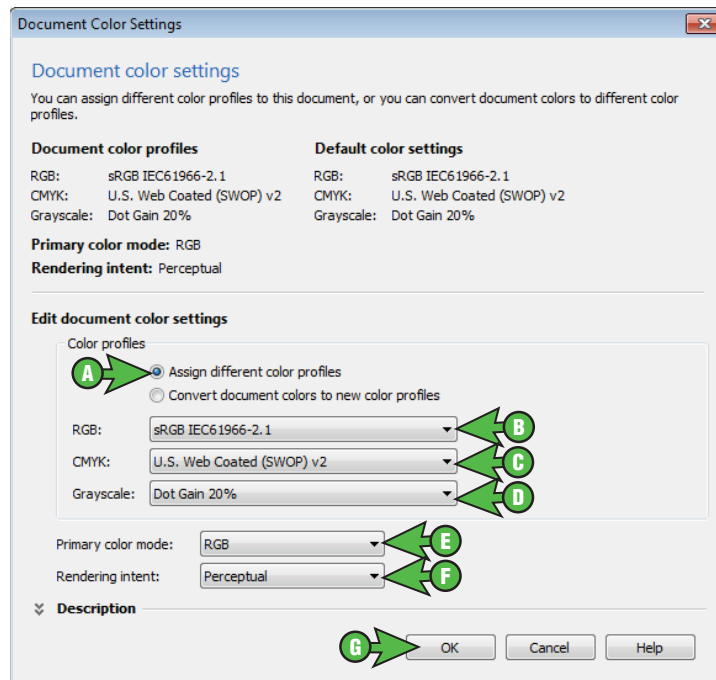


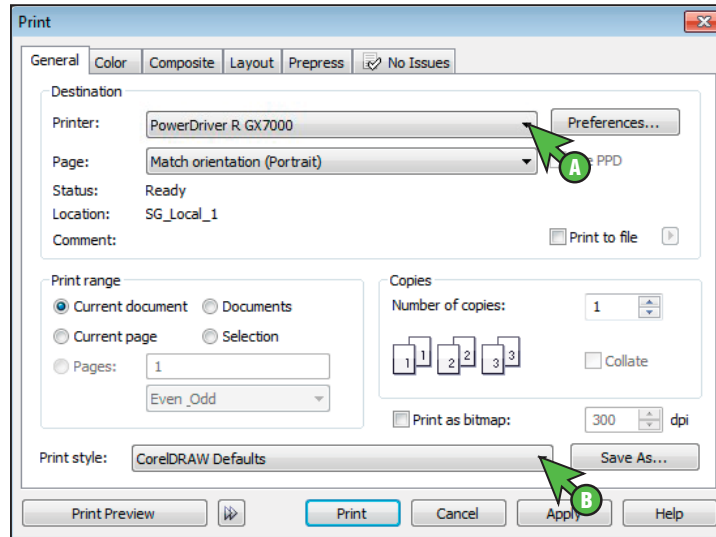
FIGURE 6

- |  |  |
|--|--|
| A. Select the radio button: <b>Assign different color profiles</b> | E. Primary color mode: <b>RGB</b>      |
| B. RGB: <b>sRGB IEC61966-2.1</b>                                   | F. Rendering intent: <b>Perceptual</b> |
| C. CMYK: <b>U.S. Web Coated (SWOP) v2</b>                          | G. Click <b>OK</b> to continue         |
| D. Grayscale: <b>Dot Gain 20%</b>                                  |  |

# SubliJet-R: Ricoh GX7000 - PowerDriver-R Setup and Print Guide: CorelDRAW X5 & X6

## Printing from CorelDRAW with PowerDriver R GX7000

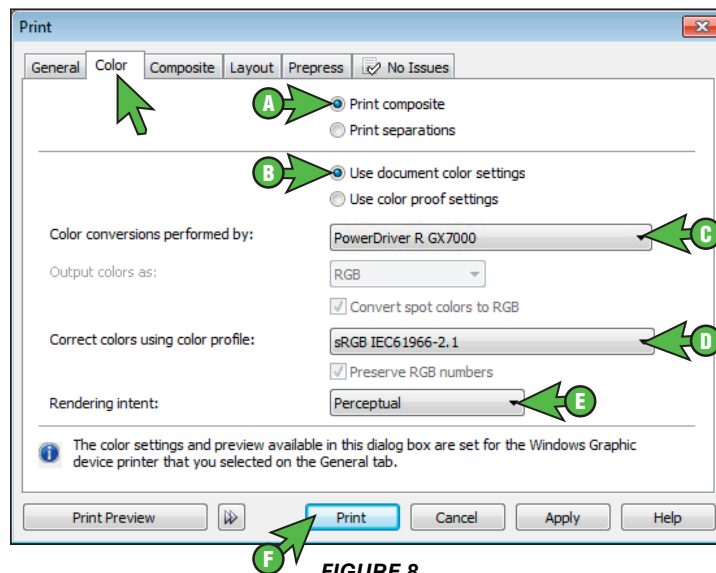
- 7.) With the correct color settings entered, you are now ready to print. In the Menu Bar, click **File > Print**. In the Print window, match your settings to those shown below (see *FIGURE 7*).



**FIGURE 7**

- A. Printer: **PowerDriver R GX7000**
- B. Print style: **CorelDRAW Defaults**

- 8.) In the Print window, click the **Color** tab and match your settings to those shown below (see *FIGURE 8*).



**FIGURE 8**

- A. Select the radio button: **Print composite**
- B. Select the radio button: **Use document color settings**

SubliJet-R: Ricoh GX7000 - PowerDriver-R  
**Setup and Print Guide: CorelDRAW X5 & X6**

C. Color conversions performed by: **PowerDriver R GX7000**

D. Correct colors using color profile: **sRGB IEC61966-2.1**

**NOTE:** *If sRGB IEC61966-2.1 is not an option, then review Step 6 of this document.*

E. Rendering Intent: **Perceptual**

F. Click **Print** when you are ready to print your image

**Congratulations!** CorelDRAW Setup is now complete. Remember to select the PowerDriver R GX 7000 each time you are ready to print.

For the absolute latest information and updates on all products, materials, processes and/or procedures relative to all offerings by or through Sawgrass Technologies, Inc., please refer to our website:  
**[www.sawgrassink.com](http://www.sawgrassink.com)**