

Ricoh GX e3300N

Setup and Print Guide: CorelDRAW 12, X3 & X4

Before proceeding, please be sure you have the correct OEM driver and PowerDriver-R installed. For Assistance with driver installation, refer to the Installation Guide: Ricoh Afico GX e3300N GelSprinter.

NOTE: Your screens and menus may differ depending on the version of software and operating system you are using. However, the settings will be the same.

CorelDRAW 12, X3, & X4 Setup Guide

Begin by opening a **new/blank page** in CorelDraw. At the top of the application click **Tools > Color Management**. This will open the **Color Management** window. (see *FIGURE 1*)

NOTE: You must have an image or blank page opened to access Color Management.

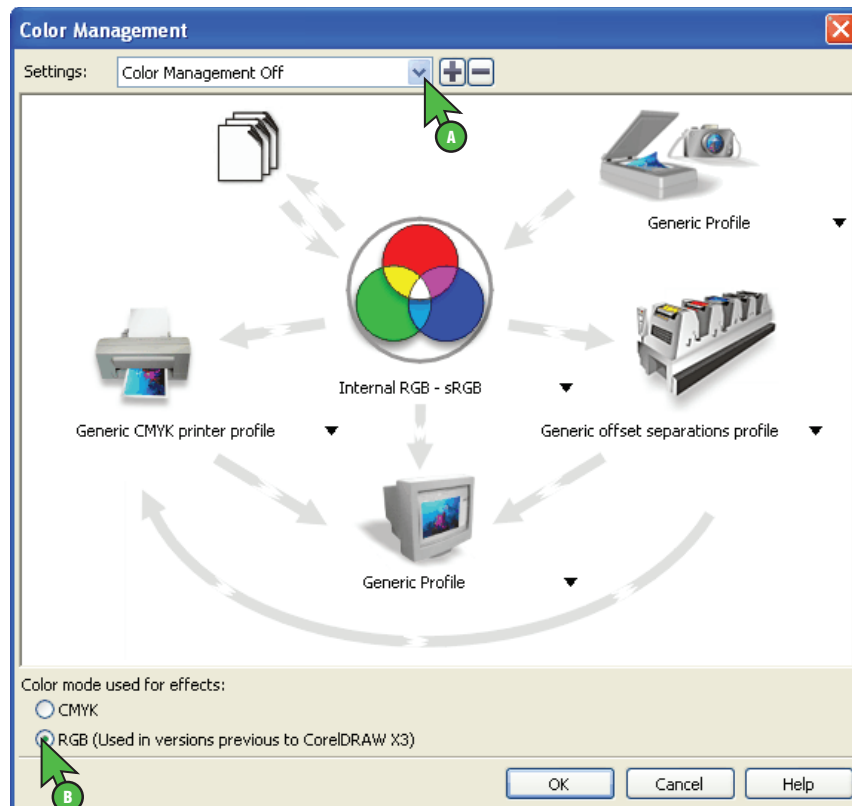


FIGURE 1

1.) Configuring Color Management: (see *FIGURE 1*)

- a. Click the drop-down arrow and select **Color Management Off** (see *FIGURE 1 > A*).
- b. Select the **radio button for RGB** (see *FIGURE 1 > B*). Click **OK** to save your new settings.

NOTE: When RGB has been selected, Settings will automatically change from Color Management Off to Custom (Current settings not saved).

SubliJet-R: Ricoh GX e3300N

Setup and Print Guide: CoreIDRAW 12, X3 & X4 (cont'd 2:2)

Printing from CoreIDRAW with PowerDriver R GXe3300N

Now that you have adjusted the Color Management settings, you are ready to print. Begin by opening an image in CoreIDRAW. At the top of the application click **File > Print**. This will open the **Print** window (see *FIGURE 2*).

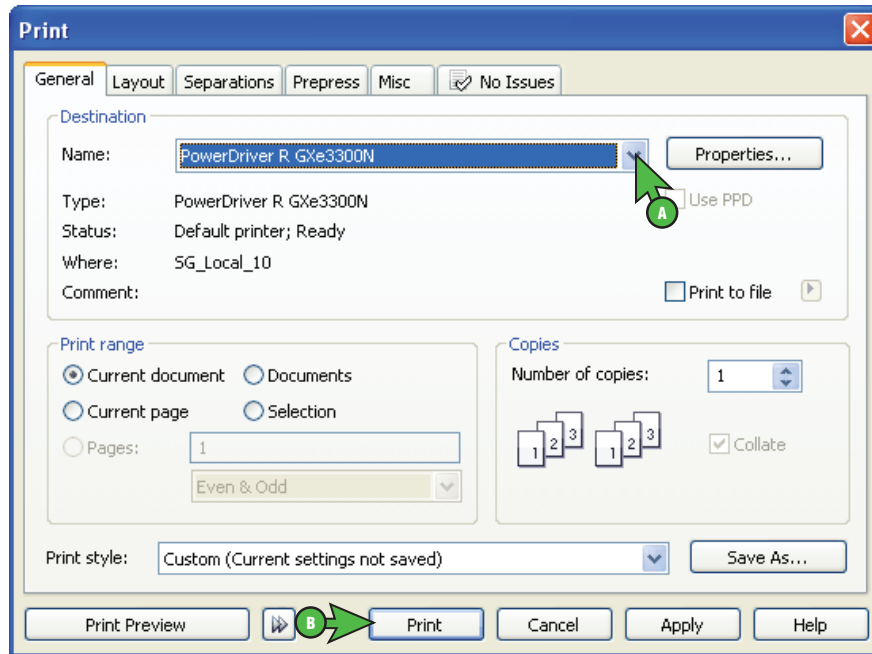


FIGURE 2

1. Printing from CoreIDRAW: (see *FIGURE 2*)

- a. Click the drop-down arrow and select **PowerDriver R GXe3300N** (see *FIGURE 2 > A*).
- b. When you are ready to print, click **Print** (see *FIGURE 2 > B*).

Congratulations! CoreIDRAW setup is now complete. Remember to select PowerDriver R GXe3300N each time you are ready to print.