

Ricoh GX e3300N

Setup and Print Guide: Photoshop 10, CS, CS2, CS3, & CS4

Before proceeding, please be sure you have the correct Ricoh (OEM) printer driver and Sawgrass PowerDriver R GXe3300N installed. For Assistance with driver installation, refer to the Installation Guide.

NOTE: Your screens and menus may differ depending on the version of software and operating system you are using. However, the settings will be the same.

Photoshop Setup Guide

Begin by opening a **new page** in **Photoshop**. At the top of the application click **Edit > Color Settings**. This will open the **Color Settings** window (see **FIGURE 1**).

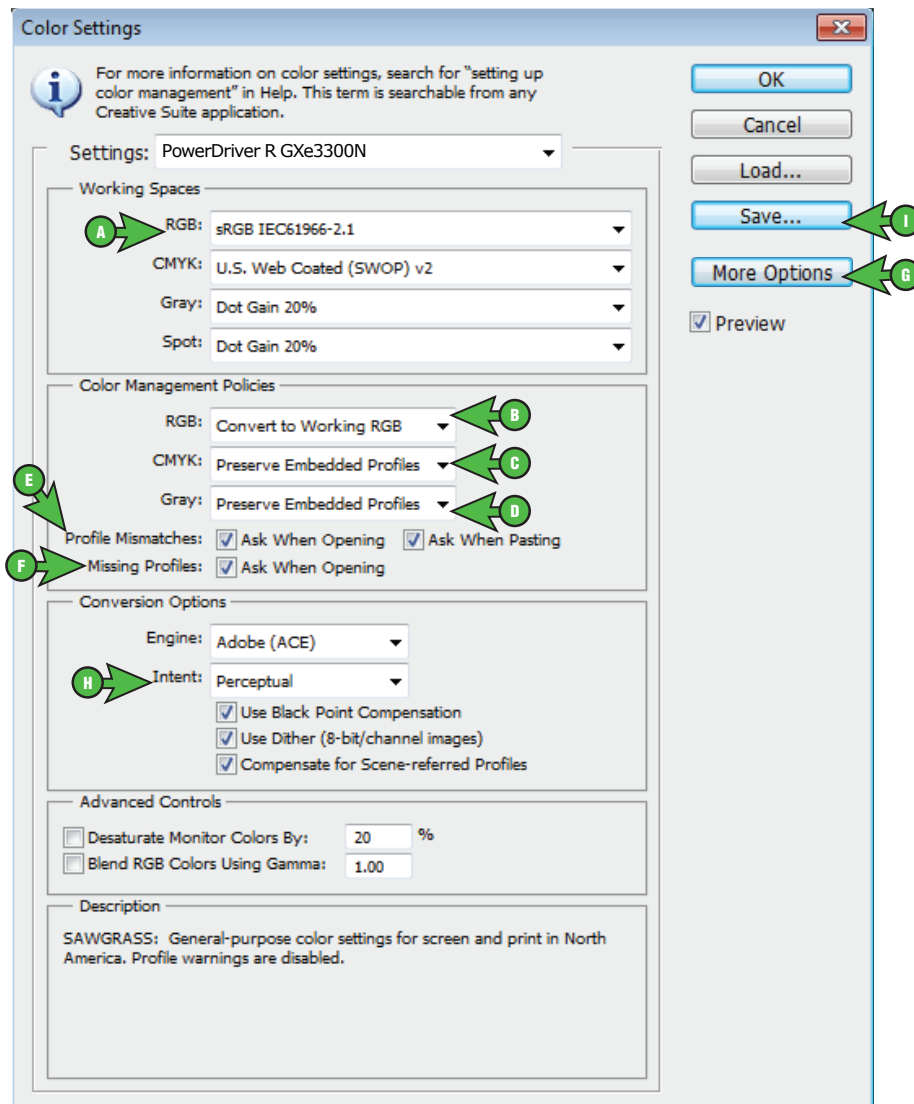


FIGURE 1

1. Configure **Color Settings**: (see *FIGURE 1*)
 - a. **Color Settings > Working Spaces > RGB** > click the drop-down [▼] arrow and select **sRGB IEC61966-2.1** (see *FIGURE 1 > A*).
 - b. **Color Management Policies > RGB** > click the drop-down [▼] arrow and select **Convert to Working RGB** (see *FIGURE 1 > B*).
 - c. **Color Management Policies > CMYK** > click the drop-down [▼] arrow and select **Preserve Embedded Profiles** (see *FIGURE 1 > C*).
 - d. **Color Management Policies > Gray** > click the drop-down [▼] arrow and select **Preserve Embedded Profiles** (see *FIGURE 1 > D*).
 - e. **Color Settings > Color Management Policies > Profile Mismatches** > check **Ask When Opening** and also check **Ask When Pasting** (see *FIGURE 1 > E*).
 - f. **Color Settings > Color Management Policies > Missing Profiles** > check **Ask When Opening** (see *FIGURE 1 > F*).
 - g. If **Conversion Options** is not visible, click **More Options** (see *FIGURE 1 > G*).
 - h. **Conversion Options > Intent > Perceptual** (see *FIGURE 1 > H*).
 - i. Once your settings match, click **Save** (see *FIGURE 1 > I*). This will open the **Save** window (see *FIGURE 2*). Type **PowerDriver R GXe3300N** in the **File Name** field (see *FIGURE 2 > A*) and click **Save** when complete (see *FIGURE 2 > B*).

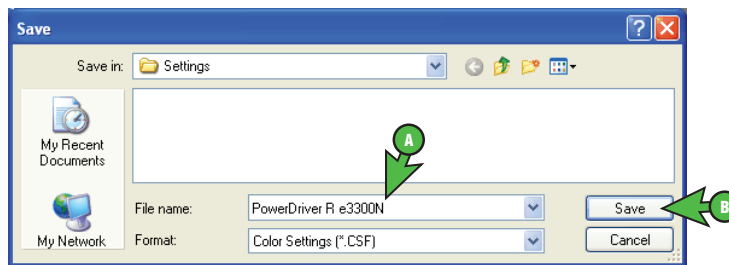


FIGURE 2

The Photoshop RGB Working Space is now set.

When opening images in Adobe Photoshop, you may encounter an **Embedded Profile Mismatch** warning (see *FIGURE 3*).

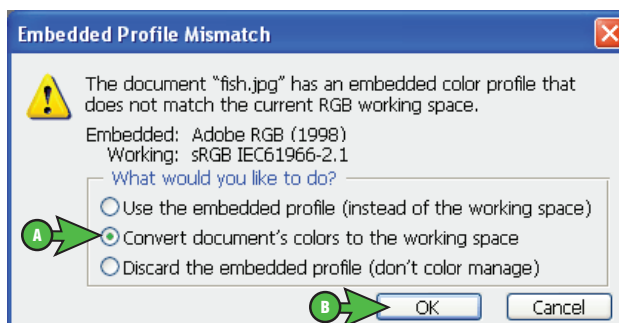


FIGURE 3

2. Convert to sRGB IEC61966-2.1: (see *FIGURE 3*)
 - a. Select the radio button for **Convert document's colors to the working space** (see *FIGURE 3 > A*).
 - b. Click **OK** to save changes and continue (see *FIGURE 3 > B*).

NOTE: Always choose to use or convert to **sRGB IEC61966-2.1**.

SubliJet-R: Ricoh GX e3300N

Setup and Print Guide: Photoshop 10, CS, CS2, CS3, & CS4 (cont'd 3:4)

Printing from Photoshop with PowerDriver R GXe3300N

Begin by opening an image in **Photoshop**. At the top of the application click **File > Print**. This will open the **Print** window (see *FIGURE 4*).

NOTE: If you are using versions older than **CS4**, you will need to click **File > Print with Preview**. Also, your screens may not exactly resemble the ones shown, but the settings will be the same.

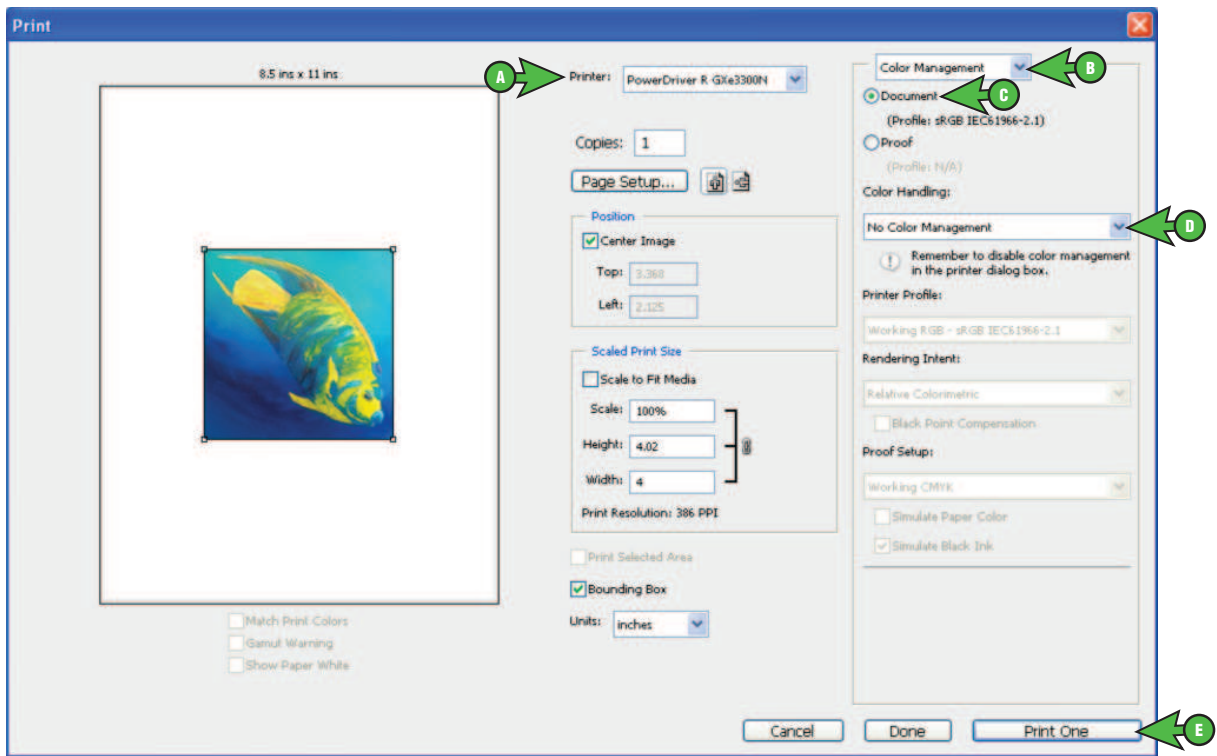


FIGURE 4

1. Configure **Photoshop Print Settings**: (see *FIGURE 4*)
 - a. Click the drop-down [▼] arrow and select your **PowerDriver R GXe3300N** (see *FIGURE 4 > A*).
 - b. Click the drop-down [▼] arrow and select **Color Management** (see *FIGURE 4 > B*).
 - c. Select the radio [●] button for **Document** (see *FIGURE 4 > C*).
 - d. Click the drop-down [▼] arrow and select **No Color Management** (see *FIGURE 4 > D*).
 - e. Click **Print** when you have entered the correct settings (see *FIGURE 4 > E*). The following **Print** window will open (see *FIGURE 5*).

SubliJet-R: Ricoh GX e3300N
Setup and Print Guide: Photoshop 10, CS, CS2, CS3, & CS4 (cont'd 4:4)

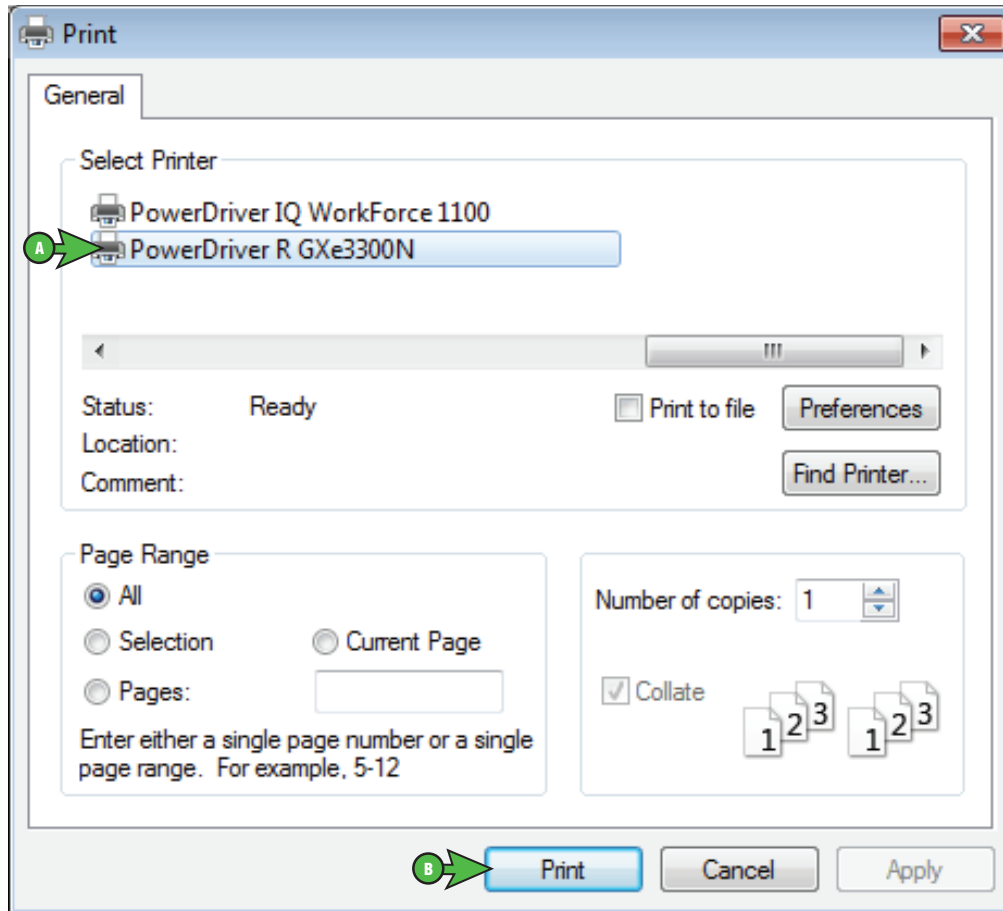


FIGURE 5

- f. Select printer **PowerDriver R GXe3300N** (see FIGURE 5 > A)
- g. You can begin printing your image by clicking **Print** (see FIGURE 5 > B).

Congratulations! Photoshop setup is now complete. Remember to select **PowerDriver R GXe3300N** each time you are ready to print.

NOTE: For the absolute latest Information and Updates on all Products, Materials, Processes, and/or Procedures relative to all offerings by or through Sawgrass Technologies, Inc., please refer to our Website: www.sawgrassink.com