

Ricoh GXe3300N

Setup and Print Guide: Elements 8, 9 & 10

IMPORTANT: Before proceeding, please be sure you have the correct Ricoh OEM printer driver and PowerDriver-R installed. For assistance with driver installation, refer to the Installation Guide.

NOTE: Your screens and menus may differ depending on the version of software and operating system you are using. However, the settings will be the same.

Photoshop Elements Workspace Setup

Begin by opening an image in Photoshop Elements. At the top of the application click **Edit > Color Settings**. This will open the **Color Settings** window (see *FIGURE 1*).

1.) Configure Color Settings: (see *FIGURE 1*)

- a. **Color Settings > Choose how to manage color in your images:** > select the radio button for **No Color Management** (see *FIGURE 1 > A*).
- b. Click **OK** to save your changes and continue (see *FIGURE 1 > B*).

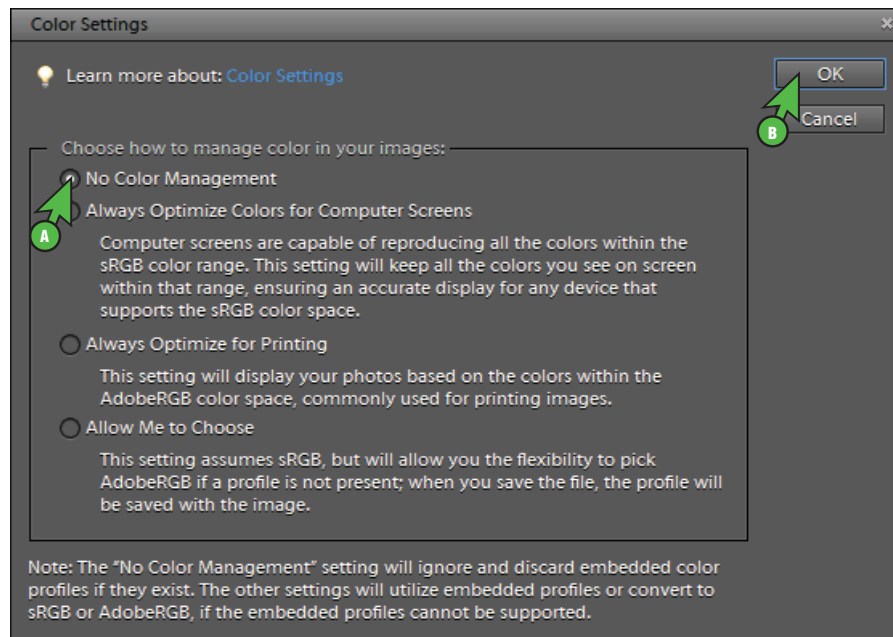


FIGURE 1

SubliJet-R: Ricoh GXe3300N

Setup and Print Guide: Elements 8, 9 & 10

2.) Configure Working Space Settings: (see FIGURE 2)

- a. At the top of you application, click **Image > Mode > RGB Color** (see FIGURE 2 > A).
- b. A check mark should now be visible next to **RGB Color** (see FIGURE 2 > B).

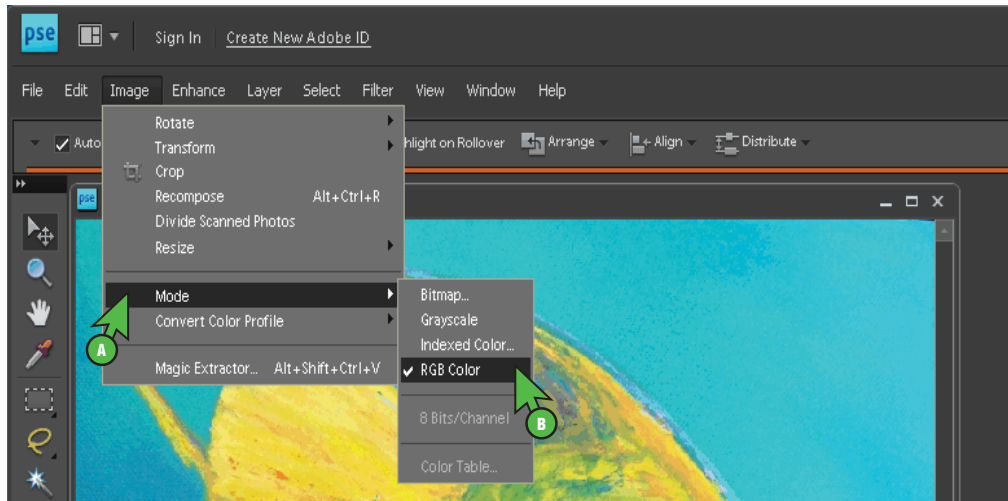


FIGURE 2

3.) Configure Embedded Profile: (see FIGURE 3)

- a. At the top of you application, click **Image > Convert Color Profile > Convert to sRGB Profile** (see FIGURE 3 > A).

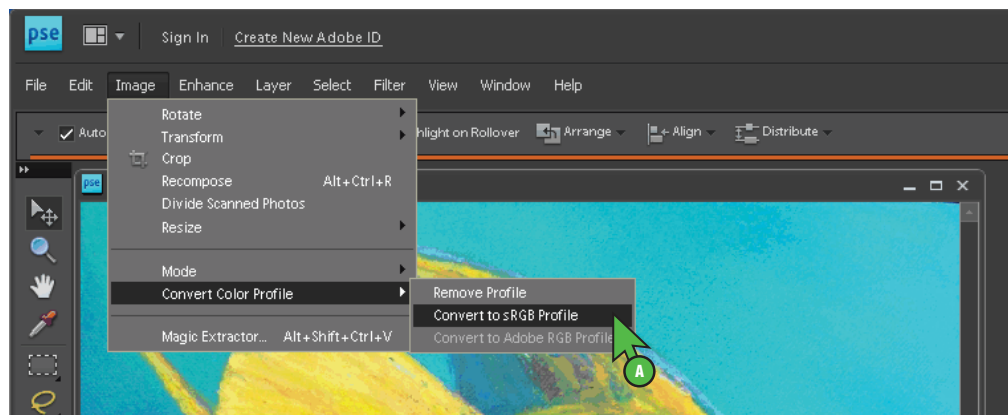


FIGURE 3

SubliJet-R: Ricoh GXe3300N

Setup and Print Guide: Elements 8, 9 & 10

Printing from Elements with PowerDriver R GXe3300N

4.) Configure Print Settings: (see FIGURE 4)

- At the top of the application click **File > Print**. This will open the **Print** window (see FIGURE 4 > A).
- Click the drop-down arrow and select **PowerDriver R GXe3300N** (see FIGURE 4 > B).
- At the bottom of the **Print** window, click **More Options** (see FIGURE 4 > C). This will open the **More Options** window (see FIGURE 4 > D).
- Click **Color Management** (see FIGURE 4 > E).
- Click the drop-down arrow and select **No Color Management** (see FIGURE 4 > F).
- Click **OK** to save your selections (see FIGURE 4 > G). Clicking **OK** will return you to the **Print** window (see FIGURE 4 > A).
- You can begin printing your image by clicking **Print** (see FIGURE 4 > H).

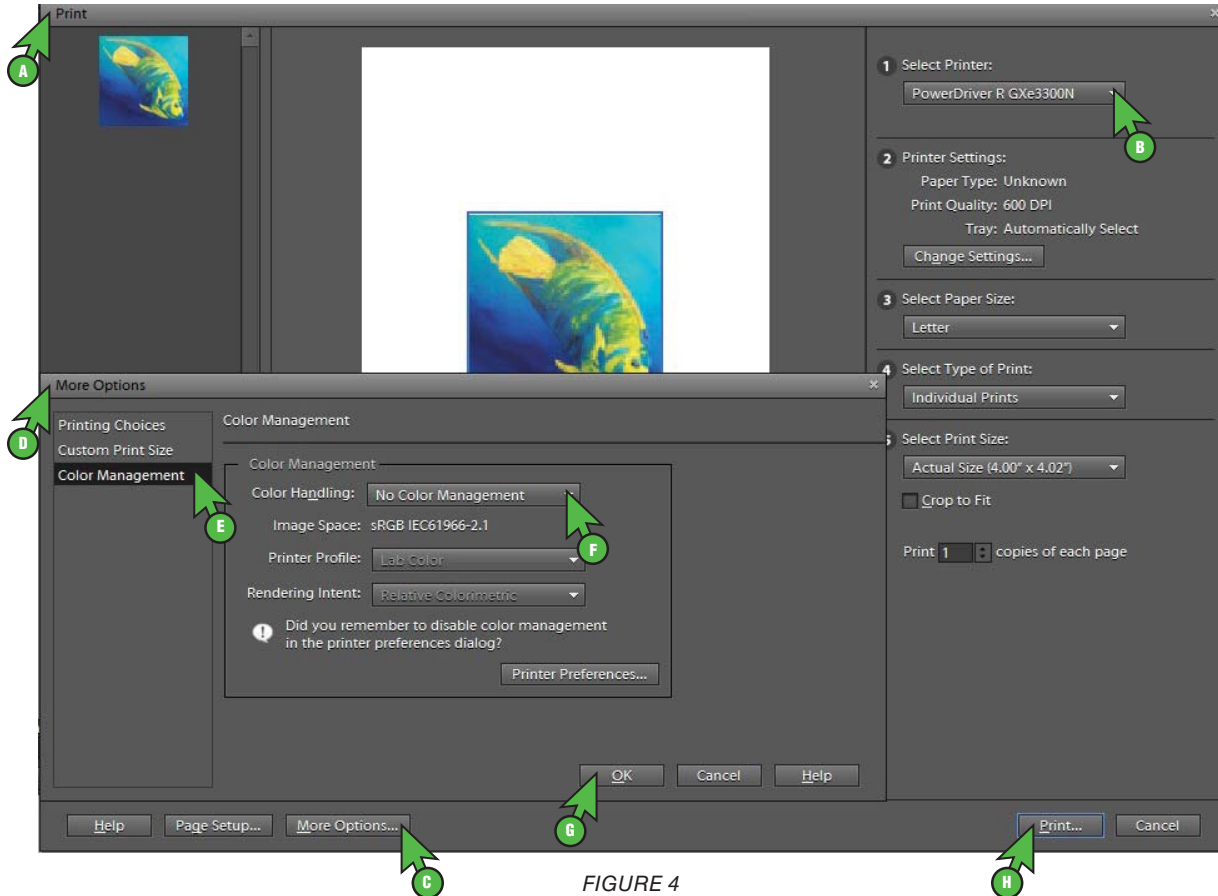


FIGURE 4

Congratulations! Photoshop Elements setup is now complete. Remember to select PowerDriver-R GXe3300N each time you are ready to print.