

Ricoh GXe3300N — Mac OS X — ICC Profile Setup and Print Guide – Photoshop CS5

IMPORTANT: Before proceeding, please be sure you have the correct ICC Profile installed. For assistance with ICC Profile installation, refer to the Installation Guide.

Photoshop's color space needs to be set to the working space in which the ICC profile was created. This allows for a more accurate screen display of your images. However, the accuracy of the displayed image on your monitor depends more on the quality of the monitor and, more importantly, whether or not it has been calibrated with the Monitor Manufacturer's ICC profile.

Setup Guide - Photoshop CS5

- 1.) Begin by opening Photoshop. Then, in the menu bar, click **Edit > Color Settings** (see FIGURE 1).

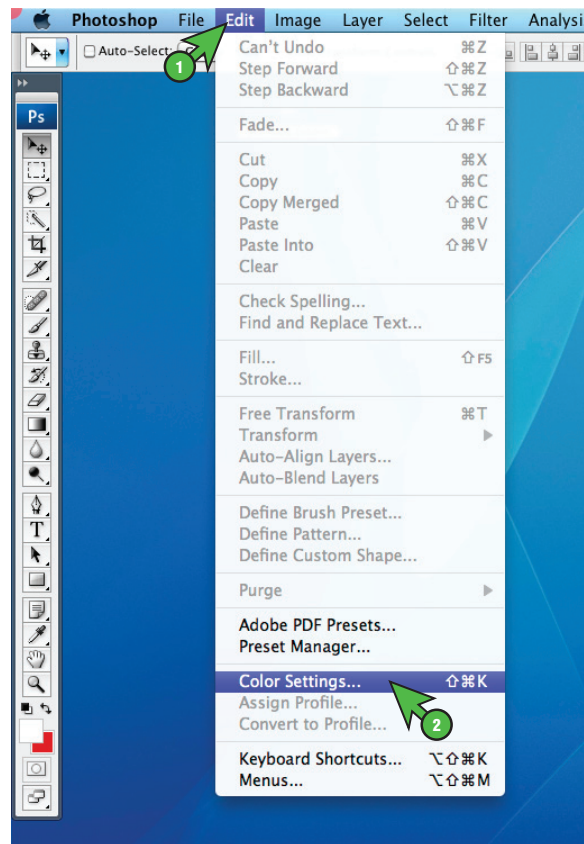


FIGURE 1

SubliJet - R: Ricoh GXe3300N — Mac OS-X — ICC Profile
Setup and Print Guide — Photoshop CS5 (Continued; Page 2:11)

- 2.) The Color Settings window should now be open (see FIGURE 2). Match your settings to the ones shown below:

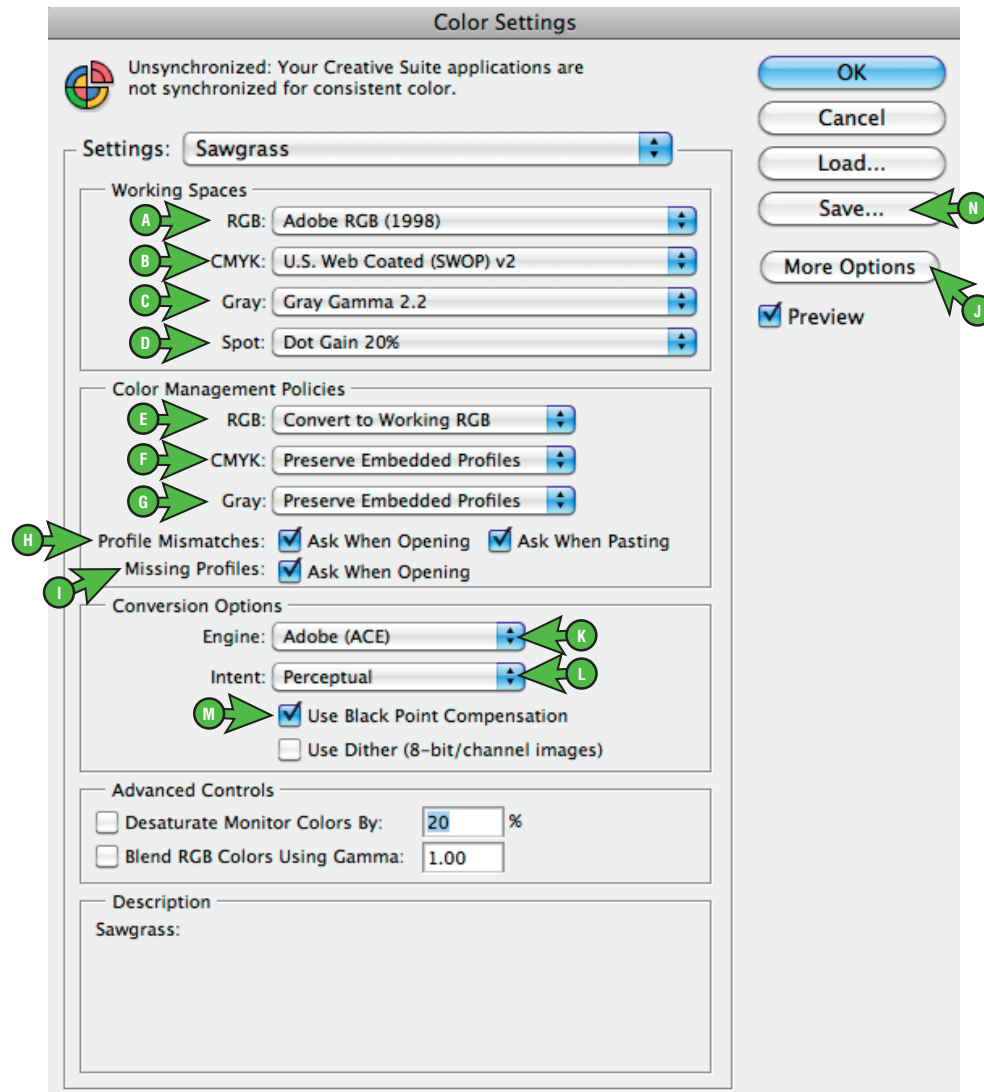


FIGURE 2

- A. **RGB:** **Adobe RGB (1998)**
- B. **CMYK:** **U.S. Web Coated (SWOP) v2**
- C. **GRAY:** **Gray Gamma 2.2**
- D. **Spot:** **Dot Gain 20%**
- E. **RGB:** **Convert to Working RGB**
- F. **CMYK:** **Preserve Embedded Profiles**
- G. **Gray:** **Preserve Embedded Profiles**
- H. **Profile Mismatches:** Check **Ask When Opening** and Check **Ask When Pasting**
- I. **Missing Profiles:** Check **Ask When Opening**
- J. If Conversion Options are not visible, click **More Options**
- K. **Engine:** **Adobe (ACE)**
- L. **Intent:** **Perceptual**
- M. Check **Use Black Point Compensation**
- N. Once your settings match, click **Save**. This will open the Save window (see FIGURE 3)

SubliJet - R: Ricoh GXe3300N — Mac OS-X — ICC Profile
Setup and Print Guide — Photoshop CS5 (Continued; Page 3:11)

Name your new preset in the Save As field and click **Save** when complete (see FIGURE 3).

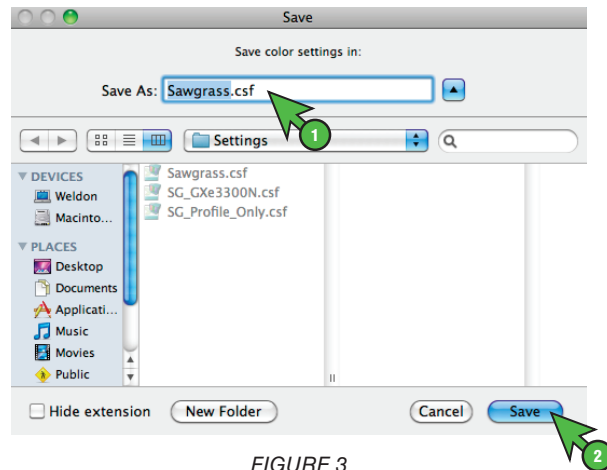


FIGURE 3

Congratulations! The Photoshop RGB Working Space setup is now complete.

Print Guide - Photoshop CS5

Begin by opening an image in Photoshop.

- 1.) When opening images you may encounter an Embedded Profile Mismatch warning. In this instance, select the radio button **Convert document's colors to the working space** and click **OK** to continue (see FIGURE 4).

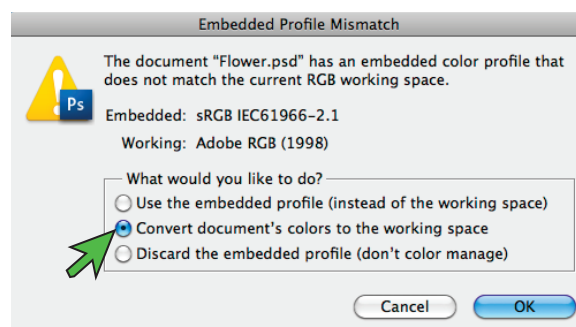


FIGURE 4

NOTE: Always choose to Assign or convert to Adobe RGB (1998)

SubliJet - R: Ricoh GXe3300N — Mac OS-X — ICC Profile
Setup and Print Guide — Photoshop CS5 (Continued; Page 4:11)

- 2.) Once your image is ready to print, in the menu bar, click **File > Print**. This will open the Print window (see FIGURE 5). Match your settings to the ones shown below:

NOTE: For older versions of Photoshop you will instead select *File > Print with Preview*.

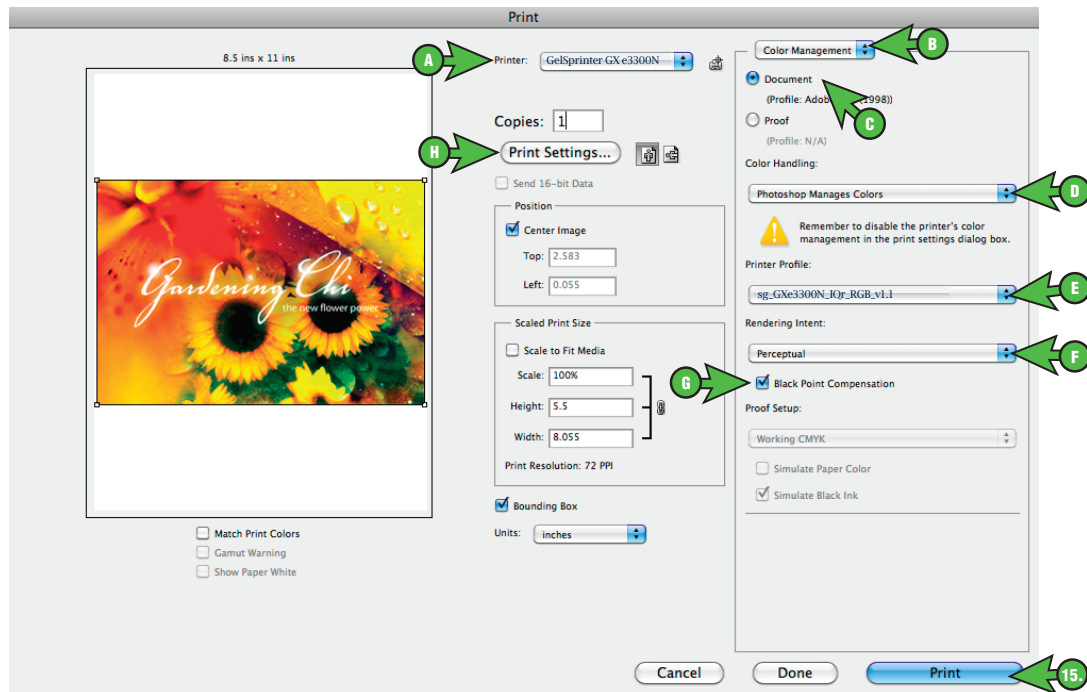


FIGURE 5

- A. Click the drop-down arrow [▼] and select Printer: **GelSprinter GXe3300N**
- B. Click the drop-down arrow [▼] and select **Color Management**
- C. Select the radio button [☑] **Document**
- D. Click the drop-down arrow [▼] and select Color Handling: **Photoshop Manages Colors**
- E. Click the drop-down arrow [▼] and select Printer Profile: **sg_GXe3300N_IQr_RGB_v1.1**
- F. Click the drop-down arrow [▼] and select Rendering Intent: **Perceptual**
- G. Check **Black Point Compensation**

SubliJet - R: Ricoh GXe3300N — Mac OS-X — ICC Profile
Setup and Print Guide — Photoshop CS5 (Continued; Page 5:11)

- H. When the correct settings have been entered, click **Print Settings** (see FIGURE 5). This will open the **Page Setup** window (see FIGURE 6).

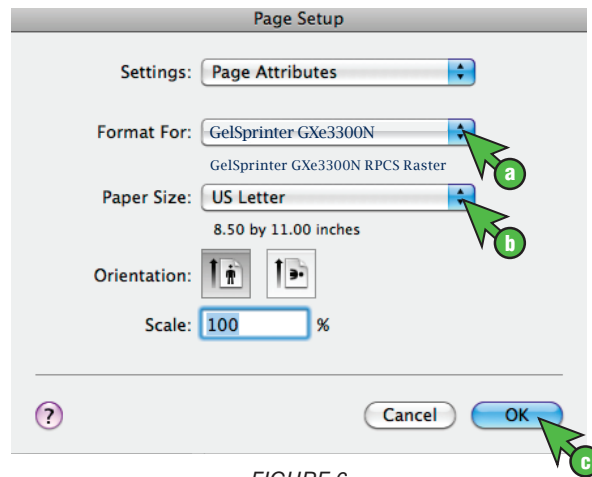


FIGURE 6

- a. Click the drop-down arrow [▼] and select Format For: **GelSprinter GXe3300N**
 - b. Click the drop-down arrow [▼] and select Paper Size: **same as Transfer Paper**
 - c. Click **OK** to continue
- 3.) Once **OK** has been selected, the following Print window will appear (see FIGURE 7). Remember to **Mirror** the image before printing. You are able to do this within the OEM printer driver or you may choose to manually mirror each image within Photoshop. To mirror the image using the printer driver, Check **Flip horizontally** (see FIGURE 7).

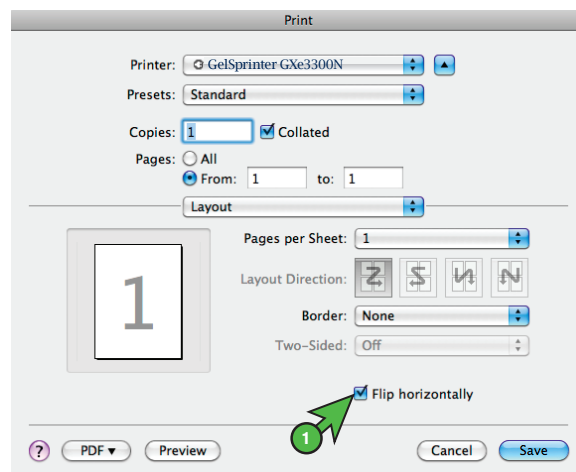


FIGURE 7

SubliJet - R: Ricoh GXe3300N — Mac OS-X — ICC Profile
Setup and Print Guide — Photoshop CS5 (Continued; Page 6:11)

- 4.) Click the drop-down arrow [▼] and select **Paper Feed** (see FIGURE 8).

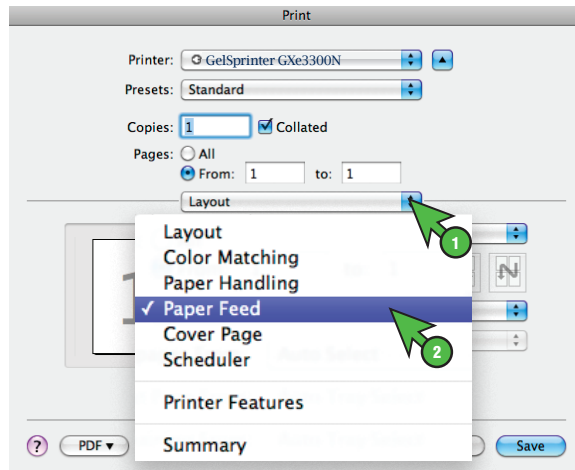


FIGURE 8

- 5.) In the paper feed window you are able to select the printer's paper source. We recommend using **Auto Select** unless you have purchased a Bypass Tray. For those users printing with a Bypass Tray, you will instead select **Bypass Tray** (see FIGURE 9).

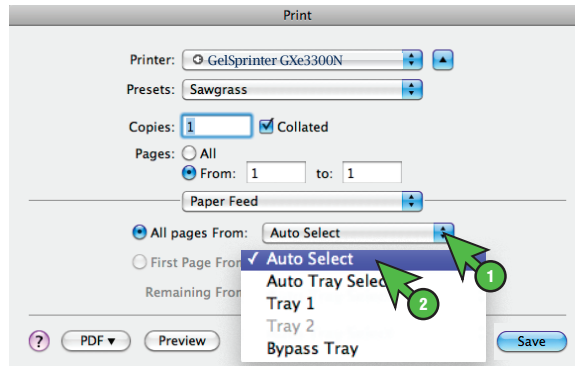


FIGURE 9

- 6.) Click the drop-down arrow [▼] and select **Printer Features** (see FIGURE 10). This will open the Print Features window (see FIGURE 11).

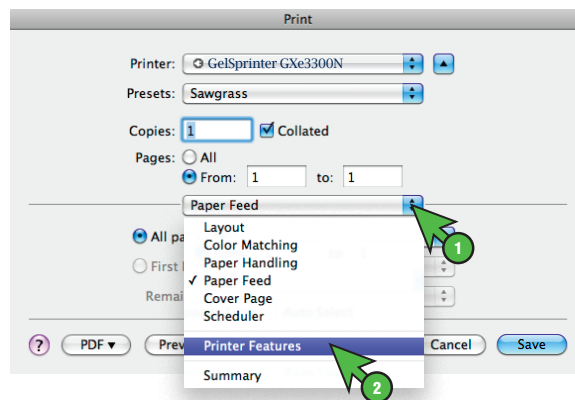


FIGURE 10

SubliJet - R: Ricoh GXe3300N — Mac OS-X — ICC Profile
Setup and Print Guide — Photoshop CS5 (Continued; Page 7:11)

- 7.) Match your settings to those shown below: (see FIGURE 11)

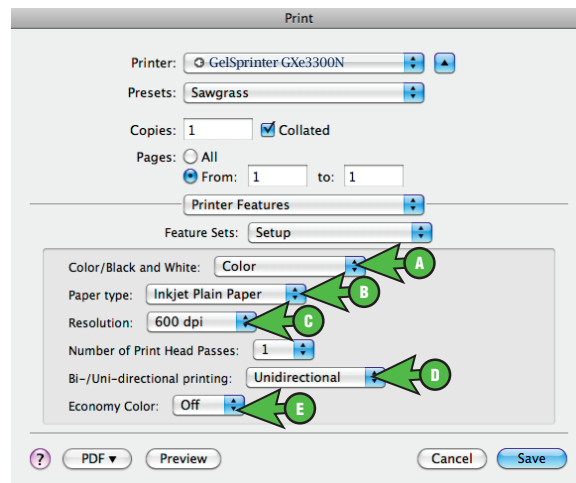


FIGURE 11

- A. Click the drop-down arrow [▼] and select Color / Black and White: **Color**
B. Click the drop-down arrow [▼] and select Paper type: **Inkjet Plain Paper**

NOTE: When choosing Paper Type, you will receive the following window (see FIGURE 12). Click **Continue** to proceed.

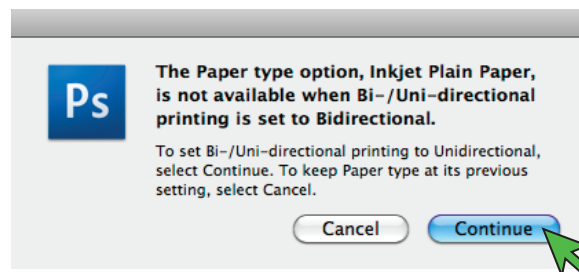


FIGURE 12

- C. Click the drop-down arrow [▼] and select Resolution: **600 dpi**
D. Click the drop-down arrow [▼] and select Bi-/Uni-directional printing: **Unidirectional**
E. Click the drop-down arrow [▼] and select Economy Color: **Off**

- 8.) Click the drop-down arrow [▼] and select **Image Adjustments** (see FIGURE 13).

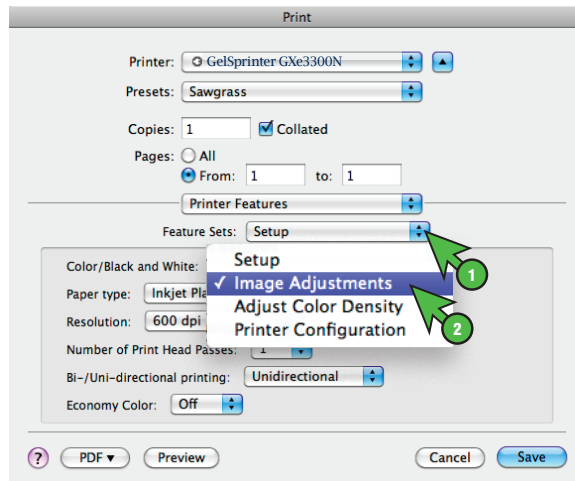


FIGURE 13

- 9.) Match your settings to those shown below: (see FIGURE 14)

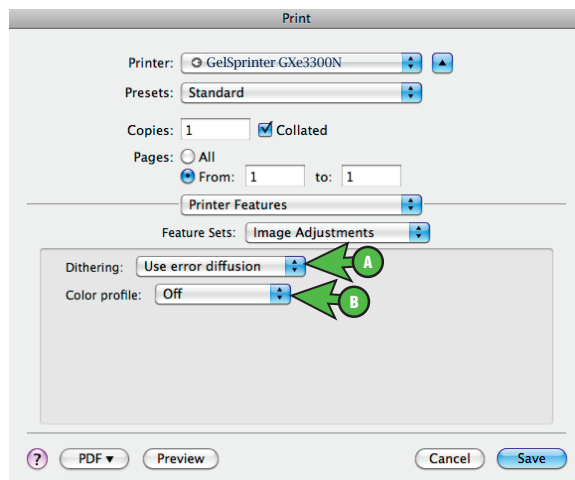


FIGURE 14

- A. Click the drop-down arrow [▼] and select Dithering: **Use error diffusion**
B. Click the drop-down arrow [▼] and select Color profile: **Off**

SubliJet - R: Ricoh GXe3300N — Mac OS-X — ICC Profile
Setup and Print Guide — Photoshop CS5 (Continued; Page 9:11)

10.) Click the drop-down arrow [▼] and select **Printer Configuration** (see FIGURE 15).

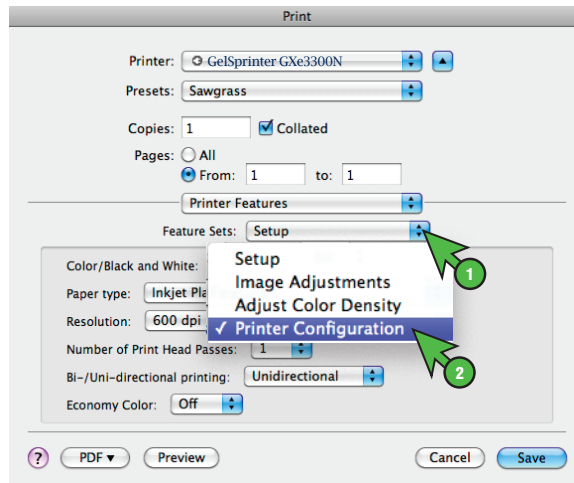


FIGURE 15

11.) Match your settings to those shown below: (see FIGURE 16)

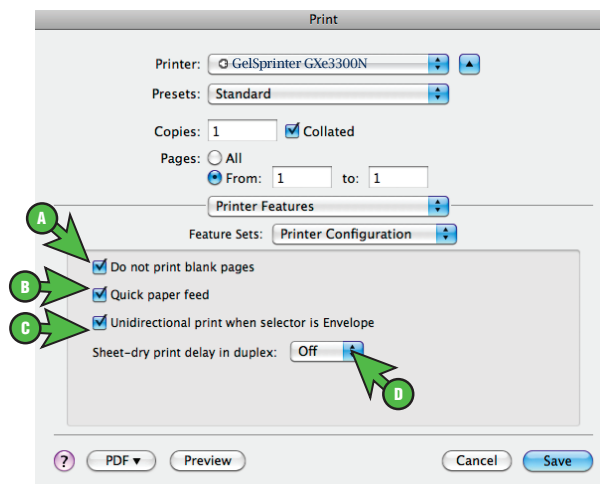


FIGURE 16

- A. Check **Do not print blank pages**
- B. Check **Quick Paper Feed**
- C. Check **Unidirectional print when selector is Envelope**
- D. Click the drop-down arrow [▼] and select Sheet-dry print delay in duplex: **Off**

12.) To save your new preset, click the drop-down arrow [▼] and select **Save As....** (see FIGURE 17).

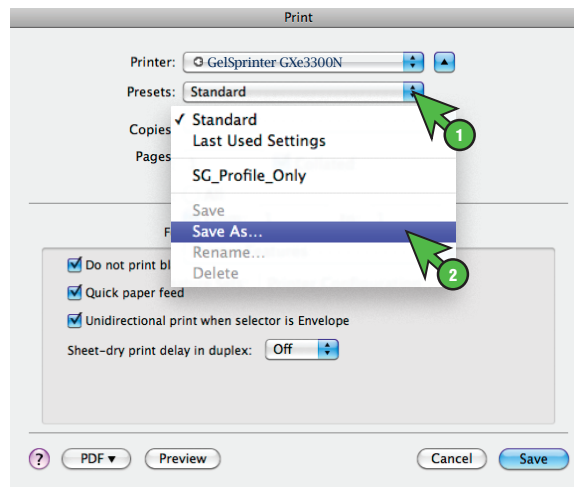


FIGURE 17

13.) Name your new preset accordingly and click **OK** when complete (see FIGURE 18).

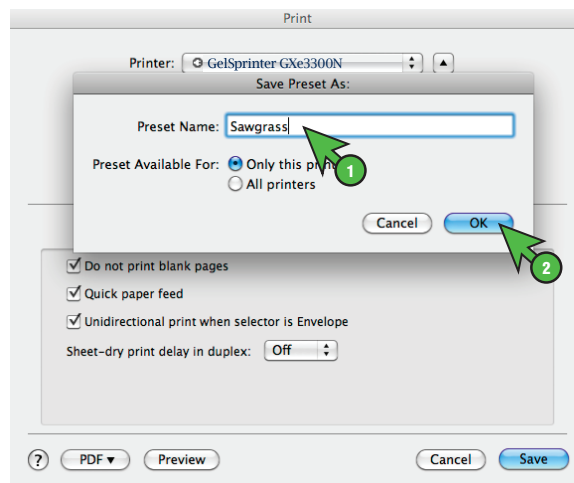


FIGURE 18

SubliJet - R: Ricoh GXe3300N — Mac OS-X — ICC Profile
Setup and Print Guide — Photoshop CS~CS4 (Continued; Page 11:11)

14.) Click **Save** to continue (see FIGURE 19).

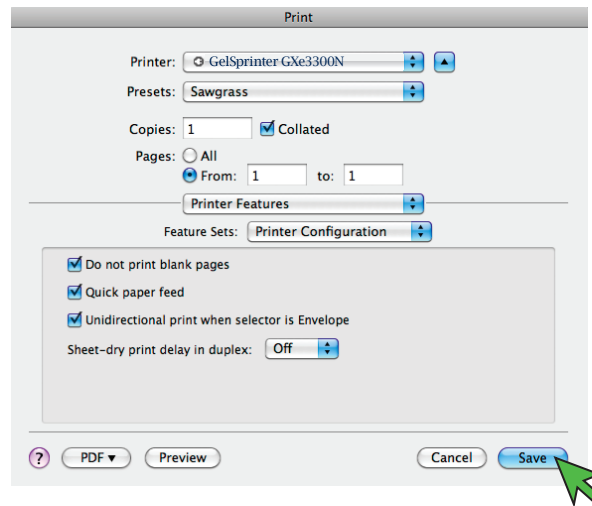


FIGURE 19

15.) You can now print your image by clicking **Print** (see FIGURE 5).

Congratulations! Photoshop setup is now complete. Remember to select GelSprinter GXe3300N each time you are ready to print.

NOTE: For the absolute latest Information and Updates on all Products, Materials, Processes, and/or Procedures relative to all offerings by or through Sawgrass Technologies, Inc., please refer to our Website: www.sawgrassink.com