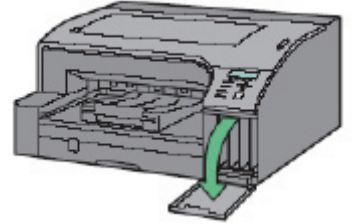


Ink Cartridge Setup

CAUTION: DO NOT INSTALL RICOH OEM INK BEFORE INSTALLING SUBLIJET-R INK. Do not power ON the printer before installing the cartridges.

1. Remove the cartridges from their packaging.

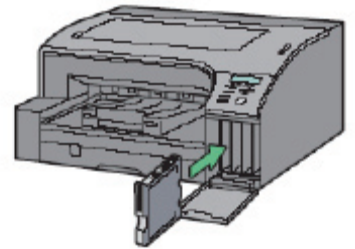


2. Open the right front cover on the printer

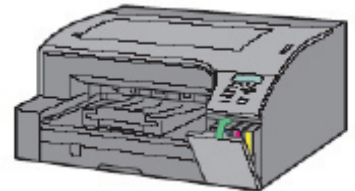
3. Insert the **SubliJet-R** cartridges in the indicated order. Press each cartridge body until it engages securely.

Please Note: Do not shake or agitate the ink carts before or after installation.

Cartridge Order: Black, Cyan, Magenta & Yellow



4. Once all cartridges are in place, close the cartridge cover.



5. Next, the Ricoh printer driver must be installed and the printer head position and paper alignment position must be set.

Note: DO NOT TURN ON THE POWER FOR THE PRINTER UNTIL THE OEM DRIVER INSTALLATION REQUIRES IT.

Sawgrass Technologies, Inc. is a leading developer of digital printing technology for mass customization of products on a wide variety of surfaces – including fabrics, plastics, metals, films and ceramics.

Sawgrass offers global markets state-of-the-art systems for creating highly customized, high-quality full color images, as a total solution provider, Sawgrass combines patented digital ink formulations with advanced color management software and a consultative technical support team to meet the needs of production customers looking for profitable production of mass customized products.

Sawgrass is committed to delivering quality products that customers can trust. Our patented ink technologies are accompanied by strong internal support systems. Sawgrass invests heavily in R&D to continue our tradition of bringing advanced color solutions to the international marketplace.

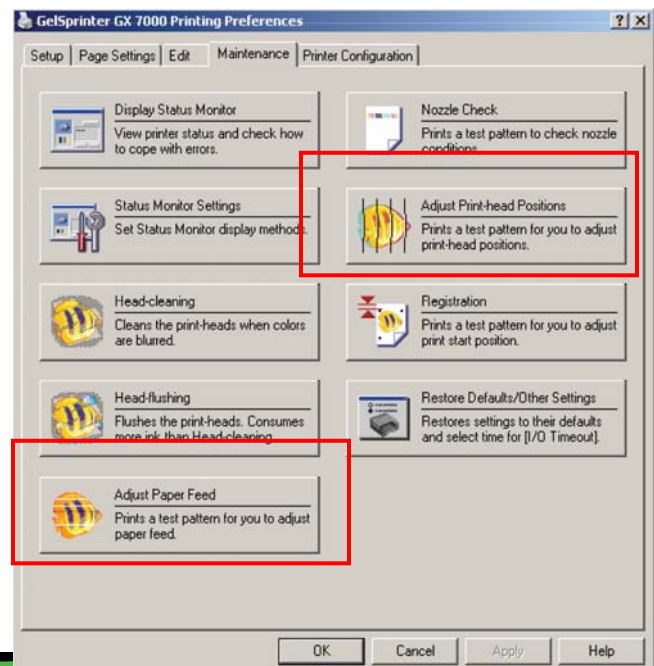
Sawgrass Technologies' US Headquarters is in Charleston, SC and our European Headquarters is in Basel, Switzerland, with additional offices in Sheffield, England.

Quick Start Installation - Ricoh OEM Driver

1. Unpack and setup printer as described in the setup instructions. Have the printer plugged into a **Power Outlet** but not turned on.
2. Install the Ricoh **CD** in the **CD-ROM** drive.
3. Select a language for the interface & click **OK**.
4. Click **Quick Install** with **USB**, and then click next.
5. Follow the onscreen instructions to complete the driver installation.
6. Once the driver is installed, the printer firmware must be updated to allow maximum output on the printer. To do this, go to the **Ricoh** website at www.ricoh-usa.com.
7. Go to the **Downloads** section of the website and click on the **Download Ricoh Drivers & Software** option.
8. If you agree to the **Software License** agreement click **OK**.
9. Under the **Product Drivers** and printers section, search for the **B&W/Color/Gel** printer option and use the drop down list to select **Aficio GX7000** and click **Go**.
10. Click on the **Firmware** link and the page will redirect to the firmware downloads.
11. Select the **Latest Version** of the **Firmware Update** download option. Choose **Save > File** and save the file to the hard drive.
12. Once the file has finished downloading, find the downloaded file on the hard drive and run the executable.
13. Follow the onscreen instructions to complete the installation. Once completed, follow the instructions on the next page to make the necessary adjustments to the **Ricoh Printer**.

Adjusting the Ricoh Printer Head Position & Paper Alignment Position

1. Open the **Printers/Faxes** control panel window.
2. Right click on the **Gelsprinter GX7000** printer option & select **Printing Preferences**.
3. At the top of the dialog window, select the **Maintenance** tab.
4. There are two options that will be used for adjusting the Ricoh printer for optimum output – the **Adjust Paper Feed** option & the **Adjust Print-Head Positions** option.
5. Start by selecting the **Adjust Paper Feed** option.
6. Follow the screen shots to print out a test sheet.
7. Once the test sheet has printed, review the page to determine the optimum level for your printer.



8. To determine which value is optimum, look for the number that appears on the left of the lightest gray square with straight horizontal lines on both sides. **(Figure 1)** When horizontal lines beside the lightest gray square are broken, select the optimal adjustment value by referring to the lines broken in the opposite direction. **(Figure 2)**

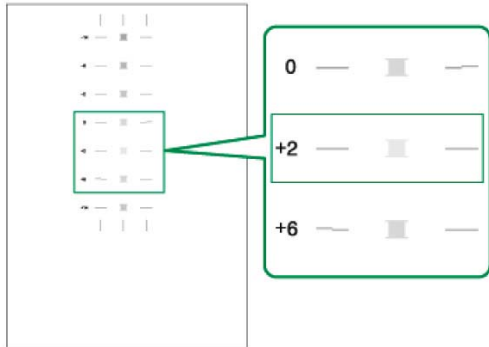


Figure 1

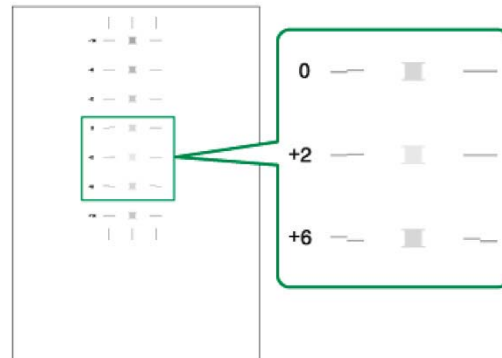


Figure 2

9. Once the optimum value is decided, go back to the printer dialog window & type in the value. Hit **Next** to complete the change.
10. Next select the **Adjust Print-Head Positions** option.
11. Follow the screen shots to print out a test sheet. Select the **Quality Priority/Speed Priority** option for printing the test pattern.
12. Once the test sheet has printed, review the page to determine the optimum level for your printer.
13. To determine which value is optimum (Figure 3), look for the column number that appears above the lightest gray square with straight vertical lines on both sides for each row.
14. Once the optimum value is decided, go back to the **Printer Dialog Window** & type in the value. Hit **Next** to complete the change.
15. Once completed, run a test print to see if the settings are acceptable. If banding is extreme, start from step one and adjust the settings again until the optimum print value is found.
16. Next install the **PowerDriver-R or ChromaBlast-R** software. The latest driver download can be found at www.sawgrassink.com under the Technical Support Section. Once there click on the ink type used and select downloads and then driver downloads.

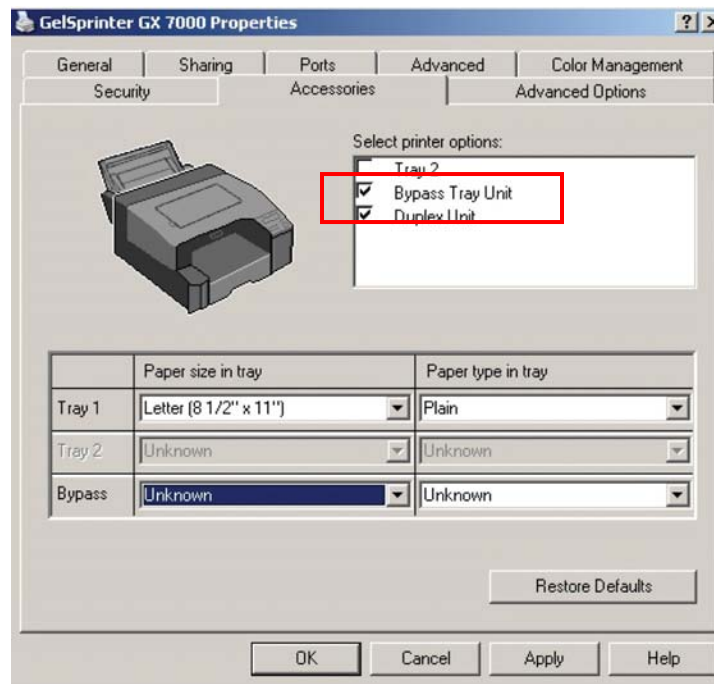


Please Note the minimum system requirements for each platform & driver before downloading the software or purchasing a computer.

Multi-Bypass Tray Information: (SubliJet-R Only)

After installation of the Bypass Tray, you must enable it within the **OEM Driver Properties File** for it to operate with **PowerDriver-R**. The following steps are necessary to complete this process:

1. Right click on the **Gelsprinter GX7000 Option** in the **“Printers and Faxes” Window**.
2. Select the **“Properties”** option.
3. Click on the **“Accessories”** Tab.
4. Under the **“Select Printer Options”** section, click on the **“Bypass Tray Unit”** option.
5. Click on the **“Apply”** Button in the bottom right-hand corner and then click on **“OK”** to close the dialog window.



Note: When selecting the 13 x 19 Paper Option within **PowerDriver R**, the paper is automatically pulled from the **Bypass Tray**. When selecting the Letter, Legal, or 11 x 17 Options, the paper is automatically pulled from the paper tray within the printer.