

## Macintosh OS X

# Sawgrass Palette Swatch Library: Photoshop CS

**Before proceeding, be sure you have the correct ICC Profile installed. For assistance with ICC Profile installation, refer to the Installation Guide.**

The Sawgrass Palette Swatch Library is installed during the installation of the ICC Profile. This Library is a collection of preset colors which are handpicked and highly suitable for use in creating designs when printing with ChromaBlast-R or SubliJet-R ink. The ICC Profile installer also includes a “Proof Palette”. The Proof Palette can be printed and transferred to create a color matching swatch booklet. The swatch booklet can then be used as a reference guide to see how colors on screen will appear once pressed to a desired medium.

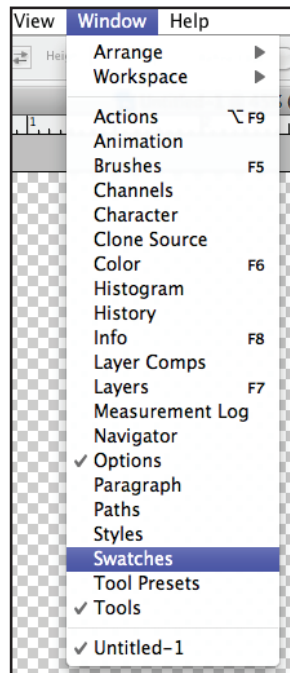
## Sawgrass Palette Swatch Library - Photoshop CS

There are two methods for importing the Swatch Library into Adobe Photoshop. You can either choose to LOAD the Sawgrass Swatch Library or you may choose to REPLACE the default swatch library, provided with your Graphics Program, with the Sawgrass Swatch Library.

### Loading the Sawgrass Palette Swatch Library

The following instructions demonstrate how to add the Sawgrass Swatch Library to the default swatch library provided with your Graphics Program. Loading the Sawgrass Swatch Library allows you to access the default swatch library along with the Sawgrass Swatch Library.

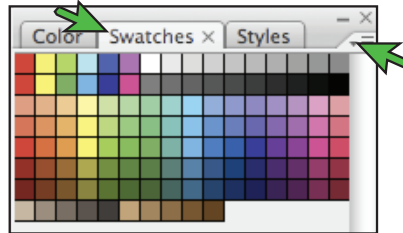
1. With your Graphics Program open, click **Window** in the menu bar and select **Swatches** (see *FIGURE 1*).



**FIGURE 1**

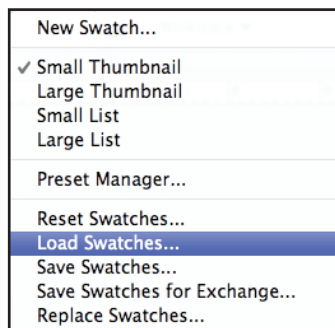
## ChromaBlast-R & SubliJet-R: Macintosh OS X Sawgrass Palette Swatch Library: Photoshop CS (cont'd 2:7)

- This will open the Swatch menu. In the Swatches tab, you will click the drop-down arrow [▼] to access the Swatch sub-menu (see *FIGURE 2*).



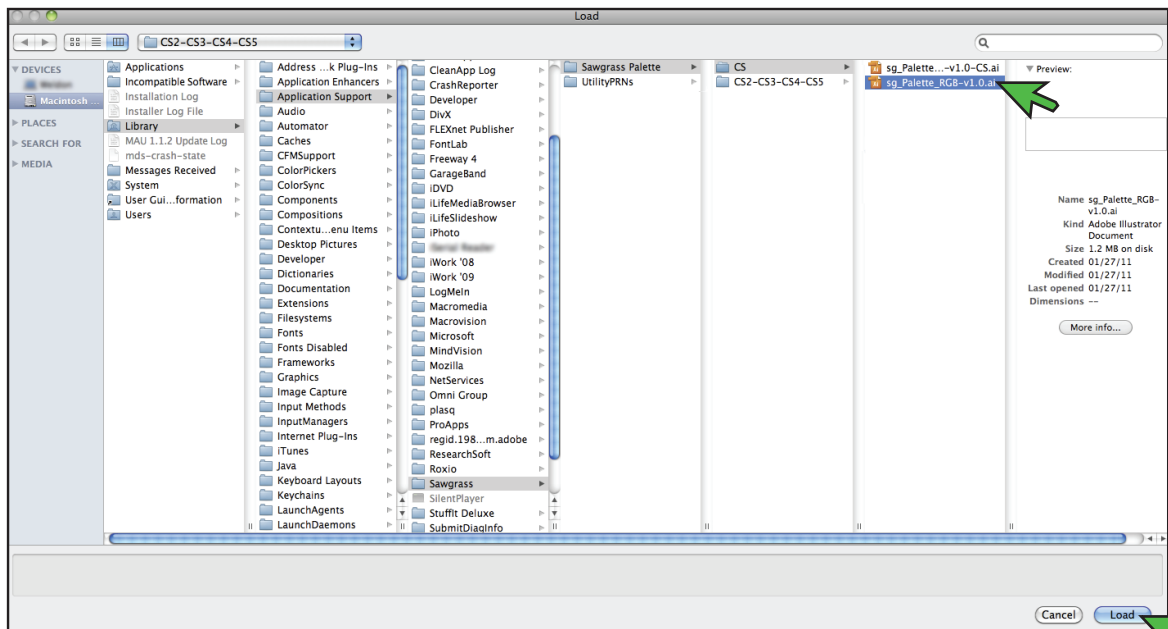
**FIGURE 2**

- The Swatch sub-menu should now be open. Here, you will click **Load Swatches...** (see *FIGURE 3*).



**FIGURE 3**

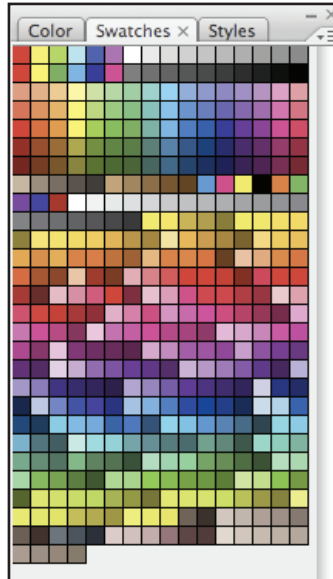
- Navigate to the Sawgrass Palette file by clicking Macintosh HD > Library > Application Support > Sawgrass > Sawgrass Palette > CS and select **sg\_Palette\_RGB-v1.0.ai**. Then, with the file selected, click **Load** (see *FIGURE 4*).



**FIGURE 4**

## ChromaBlast-R & SubliJet-R: Macintosh OS X Sawgrass Palette Swatch Library: Photoshop CS (cont'd 3:7)

5. The Library should now be added to the default swatches in your Graphics Program (see *FIGURE 5*).

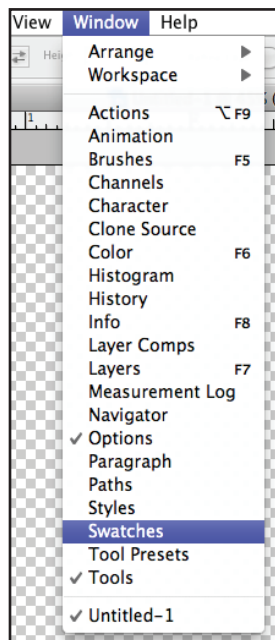


**FIGURE 5**

### Replacing the Sawgrass Palette Swatch Library

The following instructions demonstrate how to substitute the Sawgrass Swatch Library for the default swatch library provided with your Graphics Program. You will be unable to access the default swatch library if you choose to import the Sawgrass Swatch Library using this method.

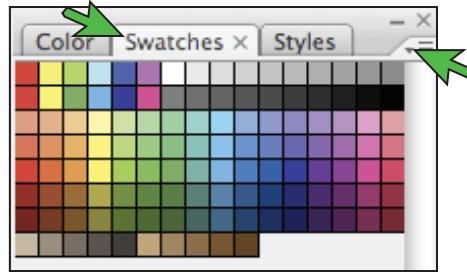
1. With your Graphics Program open, click **Window** in the menu bar and select Swatches (see *FIGURE 6*).



**FIGURE 6**

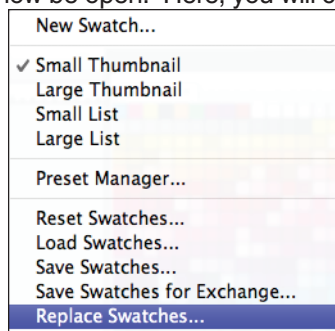
## ChromaBlast-R & SubliJet-R: Macintosh OS X Sawgrass Palette Swatch Library: Photoshop CS (cont'd 4:7)

- This will open the Swatch menu. In the Swatches tab, you will click the drop-down arrow [▼] to access the Swatch sub-menu (see *FIGURE 7*).



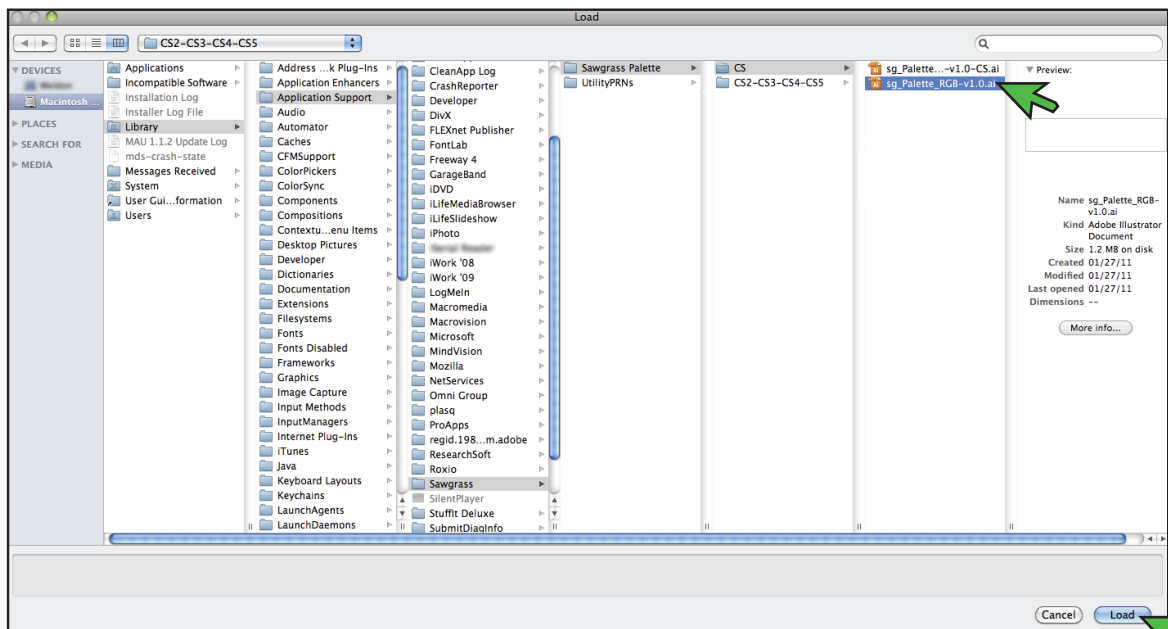
**FIGURE 7**

- The Swatch sub-menu should now be open. Here, you will click **Replace Swatches...** (see *FIGURE 8*).



**FIGURE 8**

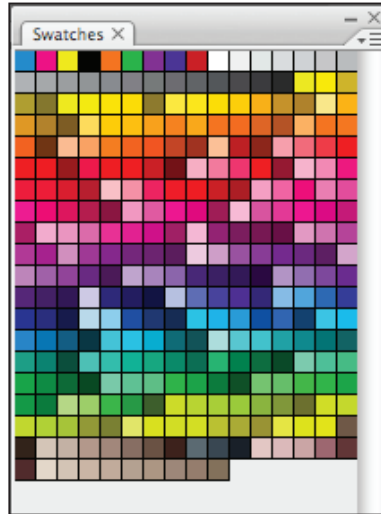
- Navigate to the Sawgrass Palette file by clicking Macintosh HD > Library > Application Support > Sawgrass > Sawgrass Palette > CS and select **sg\_Palette\_RGB-v1.0.ai**. Then, with the file selected, click **Load** (see *FIGURE 9*).



**FIGURE 9**

ChromaBlast-R & SubliJet-R: Macintosh OS X  
**Sawgrass Palette Swatch Library: Photoshop CS** (cont'd 5:7)

5. The Library should now be substituted for the default swatches in your Graphics Program (see *FIGURE 10*).



**FIGURE 10**

**Congratulations!** The Sawgrass Palette Swatch Library has now been added to your Graphics Program. Remember to select colors from this Swatch Library for consistent, spot on, color matching when creating and printing images using ChromaBlast-R or SubliJet-R ink.

# ChromaBlast-R & SubliJet-R: Macintosh OS X

## Sawgrass Palette Swatch Library: Photoshop CS (cont'd 6:7)

### Creating a Swatch Booklet Using the Proof Palette

1. With your Graphics Program open, click **File** in the menu bar and select **Open** (see *FIGURE 11*).

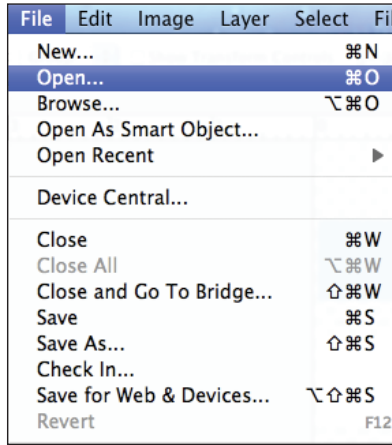


FIGURE 11

2. Navigate to the Sawgrass Palette file by clicking Macintosh HD > Library > Application Support > Sawgrass > Sawgrass Palette > CS and select **sg\_Palette\_RGB-v1.0-CS.ai**. Then, with the file selected, click **Open** (see *FIGURE 12*).

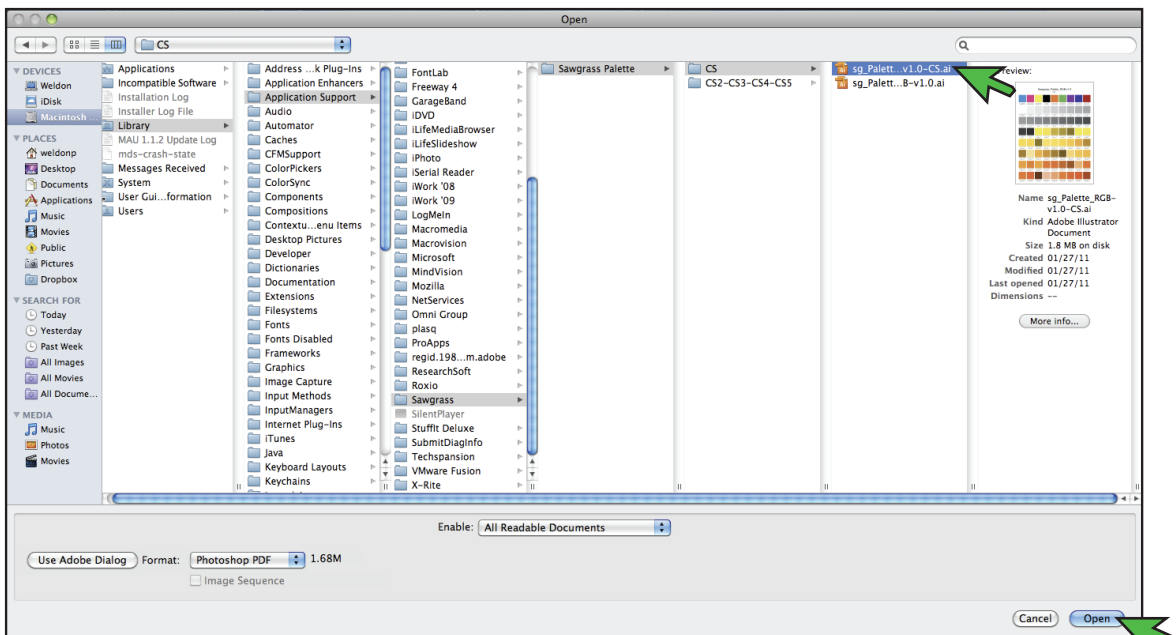
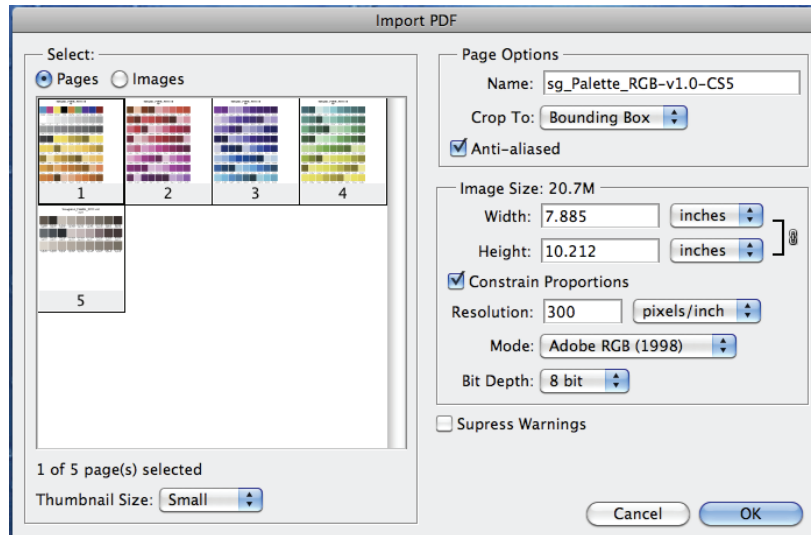


FIGURE 12

## ChromaBlast-R & SubliJet-R: Macintosh OS X Sawgrass Palette Swatch Library: Photoshop CS (cont'd 7:7)

- Once you have opened **sg\_Palette\_RGB-v1.0-CS5.ai**, the following window will appear (see *FIGURE 13*). Ensure the resolution is set to 300 and the Mode is set to Adobe RGB (1998). Then, while holding the “Shift” key, select each palette page. Finally, with all 5 palette pages selected, click **OK**.



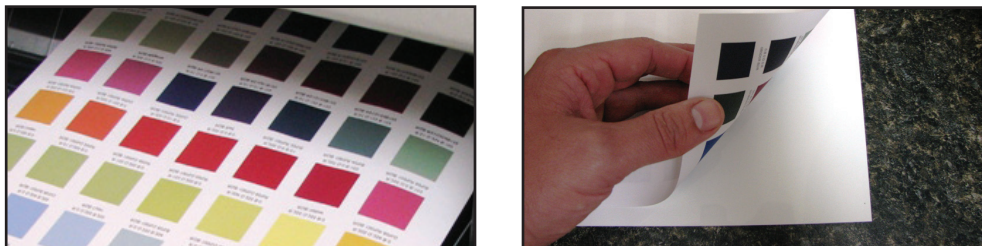
**FIGURE 13**

- The Sawgrass Proof Palettes should automatically display in your Graphics Program (see *FIGURE 14*).



**FIGURE 14**

- Print each of the Sawgrass Proof Palettes and press them to your preferred medium (see *FIGURE 15*). The transferred chart will be an excellent reference guide when selecting colors during the graphics design phase.



**FIGURE 15**

**NOTE:** For the absolute latest Information and Updates on all Products, Materials, Processes, and/or Procedures relative to all offerings by or through Sawgrass Technologies, Inc., please refer to our Website: [www.sawgrassink.com](http://www.sawgrassink.com)