

# 4800 CONFIGURATIONS FOR SUBLIJET™ SYSTEMS

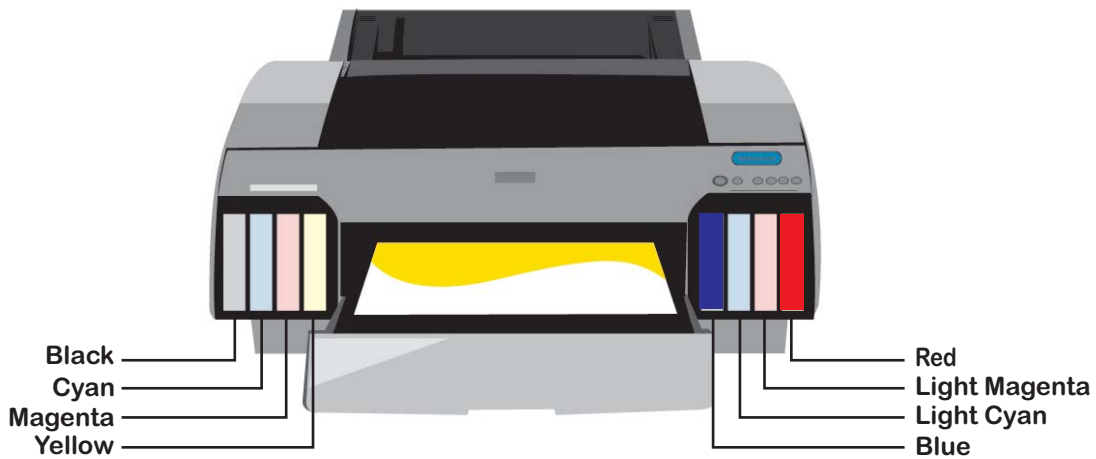
## SubliJet Red Blue XG<sup>8</sup> Option

Provides the maximum color gamut by using SubliJet Red and Blue in place of light cyan and light magenta.

## XG Printer Configuration:

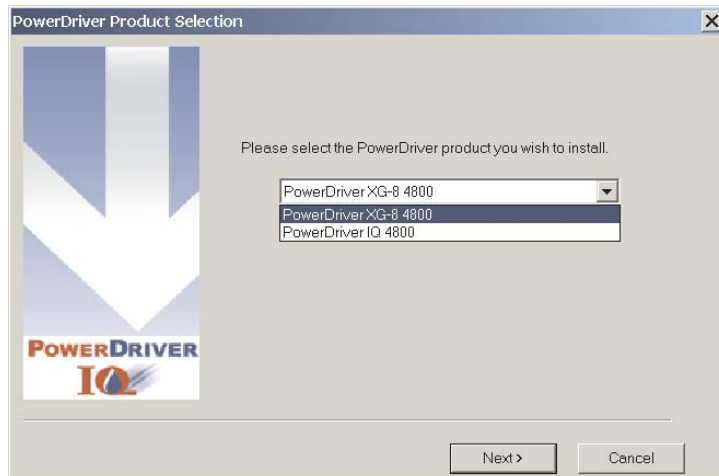
To setup your 4800 printer for XG<sup>8</sup> printing, you must load the cartridges as outlined below. It is imperative to the PowerDriver XG<sup>8</sup>™ operation that you follow this cartridge setup.

	Channel							
Configuration	1	2	3	4	5	6	7	8
OEM	Matte K	C	M	Y	Lk	Lc	Lm	Llk
XG	K	C	M	Y	B	Lc	Lm	R



## PowerDriver XG<sup>8</sup>™ Configuration:

When installing PowerDriver XG<sup>8</sup>™ you will be prompted to select the version of the driver you wish to load. If the printer is setup to run in the XG<sup>8</sup> system mode (as outlined above) select PowerDriver XG-8 4800. Follow the prompts throughout the installation to complete the process.



# 4800 CONFIGURATIONS FOR SUBLIJET™ SYSTEMS

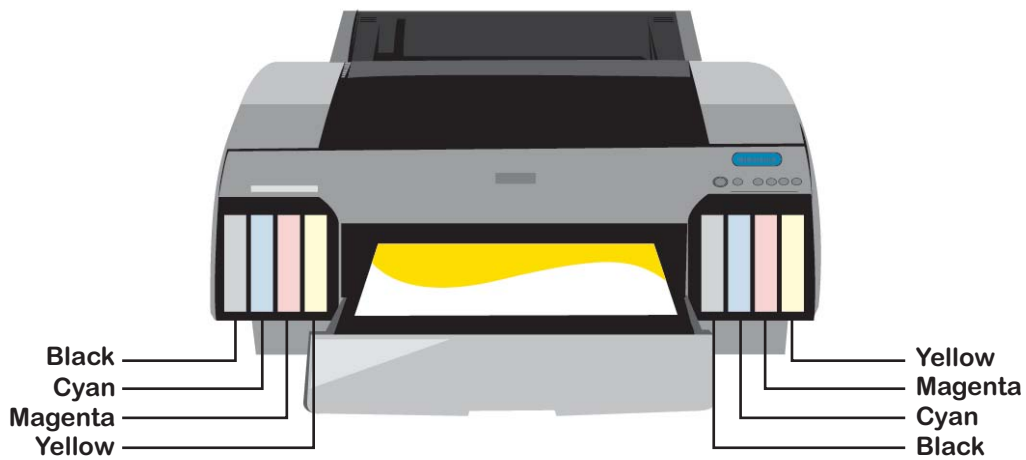
## Dual CMYK SubliJet IQ Version Option

Provides maximum production speed due to the use of Dual CMYK channels.

## Dual CMYK 4800 Printer Configuration:

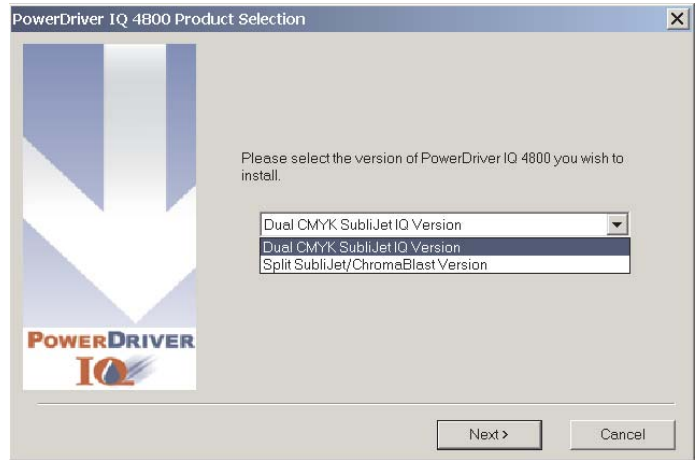
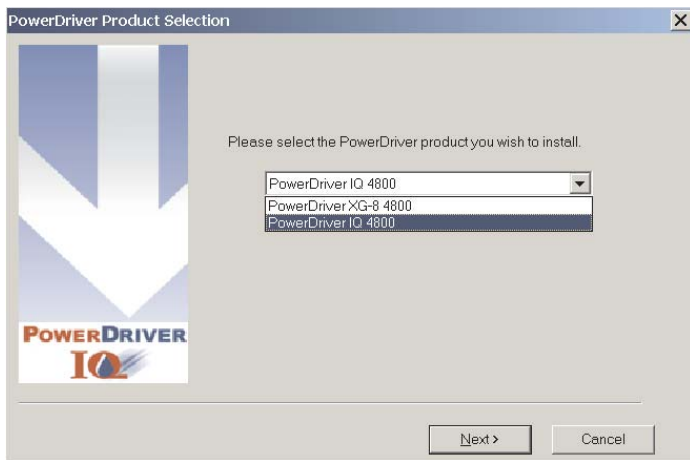
To setup your 4800 printer for Dual CMYK printing, you must load the cartridges as outlined below. It is imperative to PowerDriver™ operation that you follow this cartridge setup.

	Channel							
Configuration	1	2	3	4	5	6	7	8
OEM	Matte K	C	M	Y	Lk	Lc	Lm	Llk
DUAL	K	C	M	Y	K	C	M	Y



## PowerDriver IQ™ Dual CMYK Configuration:

When installing PowerDriver IQ™ you will be prompted to select the version of the driver you wish to load. If the printer is setup to run in the Dual CMYK mode (as outlined above) select PowerDriver IQ 4800 and when the next pop-up screen appears select the Dual CMYK SubliJet IQ version. Follow the prompts throughout the installation to complete the process.



**NOTE: For a SubliJet™/ChromaBlast™ split system setup please see the ChromaBlast™ configuration sheet for detailed instructions.**

If you have any problems or questions with any of the process please contact Sawgrass Technical Support at 843.884.1575 ex. 511