



Custom Palette Utility Guide

**For use with the Advantage Queue
and the Direct Advantage Printer**

Introduction

The Custom Palette Utility is a useful tool that was developed to assist with editing, importing and exporting custom colors and color palettes. This short document describes how to use this simple, yet valuable, application.

Using Color Finder

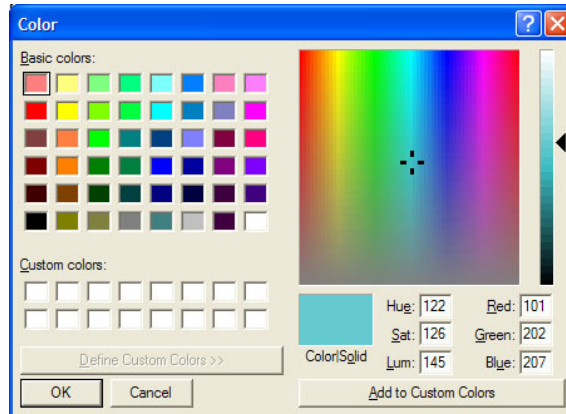
There will be times when the color you need is not included in the ColorSure Palette. The Custom Palette Utility was developed to provide a solution for these situations.

The Color Finder tool enables you to start with a specific color (e.g., navy blue) and find similar colors in the same family by adding and subtracting up to three colors called “Step Colors.” For example, starting with navy blue with a CMYK value of 60,60,0,40, and choosing two step colors (e.g., cyan and magenta) would expand the original navy blue in four directions (more cyan, less cyan, more magenta, and less magenta). This expanded color chart – specific to a particular substrate and printing speed – is output directly to your printer.

How to use Color Finder:

Color Finder is available from the Printer Preferences menu, which can be accessed from the *Printers and Faxes* menu in the Windows *Start* menu. Right-click on the Advantage Queue and select Printing Preferences from the drop-down menu. Once in the Printing Preferences window, proceed as follows:

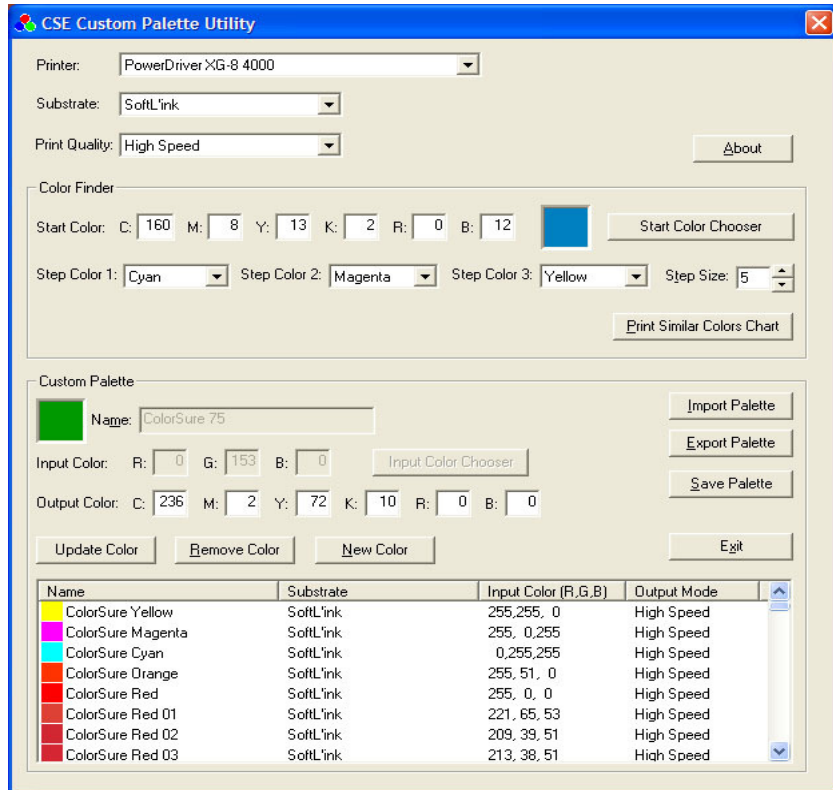
1. At the top of the window, select the printer, substrate, and print quality that you want to use.
2. Choose your desired start color. You may either enter the CMYK values manually in each designated box, or click on the **Start Color Chooser** button. If you select the Color Chooser, a new window will open up where you can visually choose your start color.



Start Color Chooser Tool

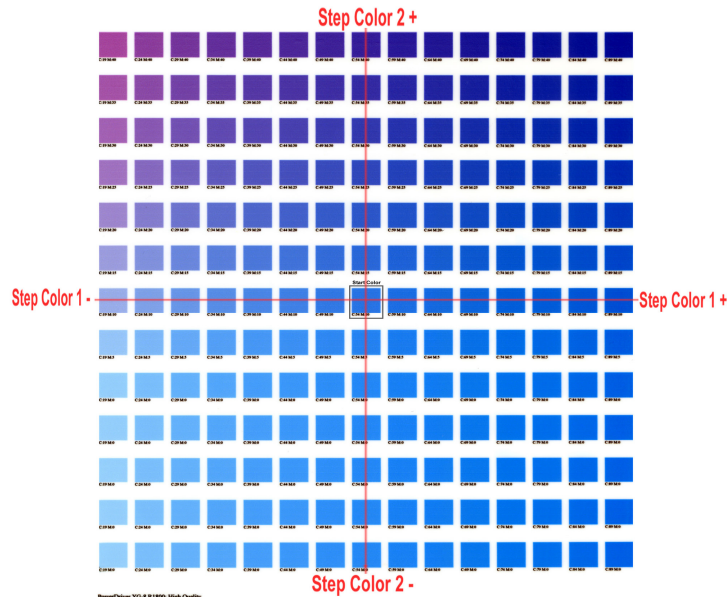
- Using **Start Color Chooser** enables you to quickly choose a color from the basic color selection on the left, or from the numerous possibilities of the color matrix on the right. To define a custom color, click anywhere in the matrix. Use the slider at the right of the matrix to adjust luminosity. Clicking “OK” will automatically fill the CMYK boxes with the corresponding values.
- For advanced users, CMYK values can be determined by printing out a Custom Palette, which is described in the next section.

Custom Palette Utility – Page 3



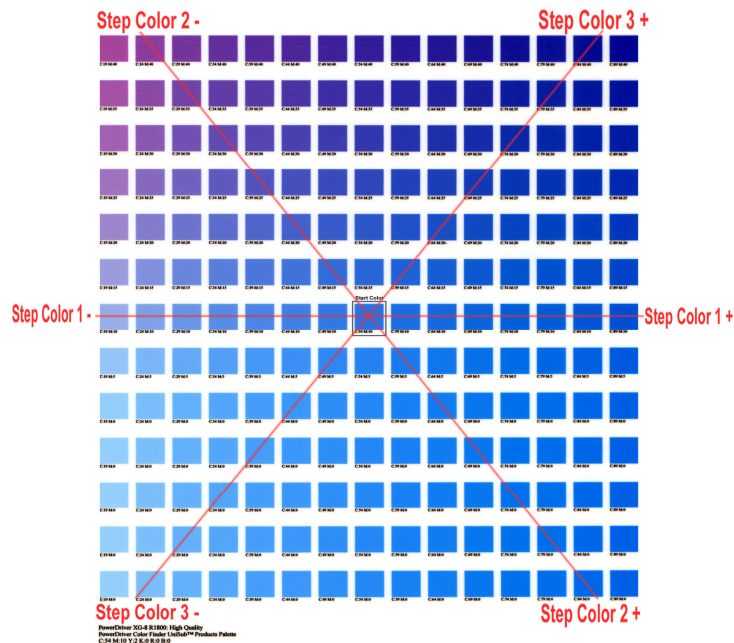
Custom Palette Utility

3. You may alter the chosen color's CMYK value by selecting two or three **Step Colors**. Using multiple step colors, will present you with a greater range and variety of colors from which to choose.
 - For instance, if you choose to modify your Start Color with two steps, then Step Color 1 will change its values on the X (horizontal) axis, and Step Color 2 will change its values on the Y (vertical) axis.



Color Finder Palette with two Step Colors

- If you modify your Start Color with three steps, Step Color 1 will remain the same. Step Color 2 and Step Color 3, however, will form an imaginary 'X', and their values will change on opposing diagonal Y axes.



Color Finder Palette with three Step Colors

4. Next, determine what **Step Size** you want to apply to the Color Finder palette. This is simply a question of how much you want your Start Color to fluctuate. If your Start Color is close to the color you are looking for, use a low Step Size (i.e., 5 or less). If, however, your start color is not close to what you are looking for, use a higher Step Size. You can enter any Step Size value between 1 and 40.

Custom Palette Utility – Page 5

- As an example, let us say your Start Color is C:20, M:100, Y:150, K:0, and you select Cyan and Magenta to be your Step Colors. You also enter a Step Size of 10. When you click the **Print Colors** button, your Start Color will be in the middle of the Color Finder palette, and from there, each color will vary the Cyan and Magenta values by 10.
5. When you are finished selecting the Start Color, Step Colors, and the Step Size, click on the **Print Colors** button to print your custom Color Finder palette directly to your printer.
 6. After printing the Color Finder palette, transfer it to your selected substrate (e.g., a cotton T-shirt) and then try to match your desired color to one that is on the palette. If you find a suitable match, you are finished using the Color Finder tool. Move on to the next section - **The Custom Palette**.
 7. If you could not find an accurate match on the first printed Color Finder palette, follow these easy steps to find a more suitable custom color:
 - i) Locate a new Start Color from the palette that is closer to your desired color than the original color.
 - ii) Write down that color's CMYK value. Here is how to obtain this value:
 - (1) There are numbers under each color that are dependent upon the Step Colors you chose. For example, the numbers might be, C:70 M:120. Take note of these values.
 - (2) At the bottom left of the Color Finder palette, you will see a full set of CMYK values. The new Start Color's CMYK value would be, C:70, M:120, and whatever the YK values are from the full set.
 - iii) Plug the CMYK values for the new Start Color into the boxes in Color Finder, choose your Step Size, and click on Print Colors once again. Repeat steps i) – iii) until you find your desired color.

The Custom Palette

Let us assume that, using the Color Finder tool, you have found the exact color you need. Now you need to either apply these custom-color values to an existing palette, or create a new custom palette. Storing these values, will enable you to access this color again when printing the same job or a similar need arises.

How to use Custom Palette

1. Assign the CMYK values of the matched color from the *Color Finder* palette to the **Output Color** CMYK fields in the Custom Palette section.
2. Give your new custom color a descriptive **Name** in its designated field (e.g., IBM Blue).
3. Assign an RGB **Input Color** value. There are two methods for establish this value:
 - a) If you have the original file, use the eyedropper tool in your graphic design application to sample the matched color in the application. This will give you the RGB value of that color. Enter this value into the RGB Input Color fields of the Custom Palette section.
 - b) If you do not have the original file, or the artwork has not yet been designed, simply click on the **Input Color Chooser** button, and then click on **Define Custom Colors**. From the color matrix, find a color that closely resembles the color that you are adding to the custom palette. At the bottom-right of the color matrix window, are the RGB values. Simply click "OK," and the RGB Input Color values will be automatically entered. Please take note of these RGB values for later use in your design applications.
4. Click the **Add Color** button. A window will pop up asking you whether you want to add the color to the palette for all substrates, or just the current substrate. Click 'YES' here, unless you have the same custom color saved on palettes for other substrates.

Custom Palette Utility – Page 6

5. Another window will then ask you if you want to save the custom color for all resolutions or just the current one. Click 'YES' here, unless you have the same custom color saved on palettes for other resolutions.
6. Click the **Save Palette** button. When finished, simply Exit out of the window.

Note: The *Import Palette* and *Export Palette* options are used for transferring palettes to and from different computers.

Adding Swatches to your Application Palette:

It is possible to add your custom color(s) swatch to an application palette as well. You will need to take note of the **Input Color** RGB value that you assigned in the previous step in order to create the new swatch. Refer to your specific design application software manual for instructions on this topic.