

Assembling the Precision DA Adult Jig

Parts List (refer to the illustration at right)

- One (1) Platen Support Bracket
- One (1) Platen
- One (1) Hoop
- Four (4) Mounting Posts (3 5/8 inches long)
- Four (4) 5/8" bolts
- Four (4) 1 1/8" bolts
- Four (4) Washers

Tools required: One (1) #4 metric hex wrench (provided).

Assembly Instructions

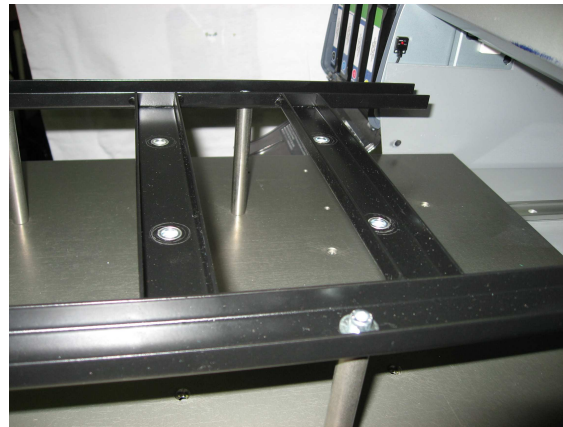
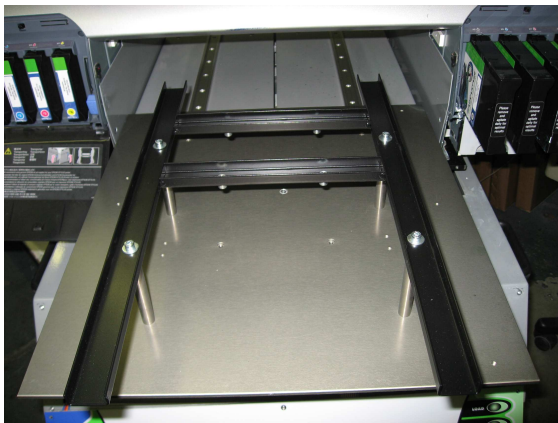
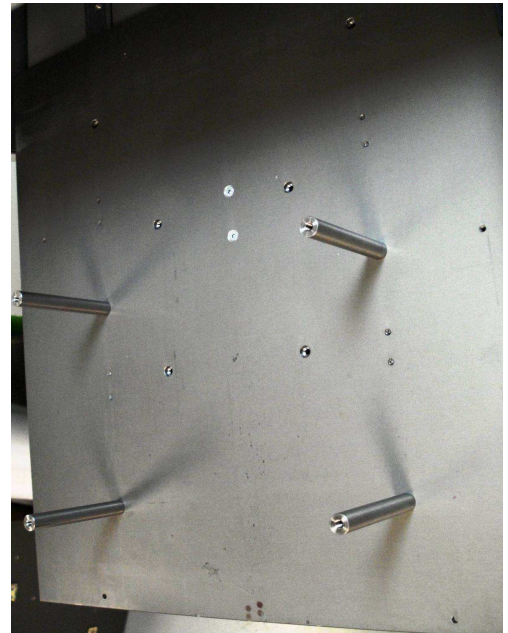
1. Open the box, remove all of its contents, and verify that you have all of the required parts and hardware (refer to the parts list above and illustration at right).
2. Screw the four long (3 5/8") mounting posts to the base plate and hand-tighten them securely. Refer to the four illustrations below to locate the correct mounting holes on the base plate.



Adult Jig Assembly Instructions

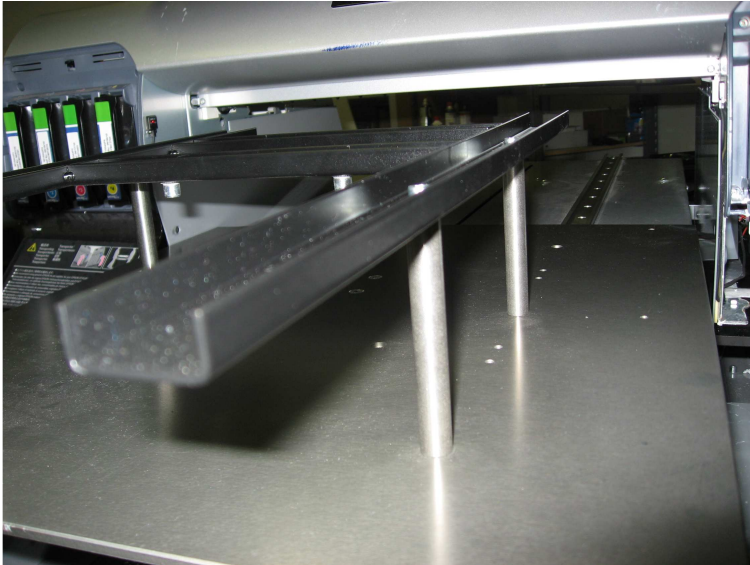


3. Place the platen-support bracket on the four mounting posts, and align the four mounting holes on the bracket with the holes on the mounting posts (Hint: the longer end of the two parallel rails should be towards the front of the jig, the side closest to you. Refer to the two illustrations below).
4. Insert the four washers into the 5/8" bolts and, using the #4 metric hex wrench, attach the platen-support bracket to the mounting posts with the four bolts (see illustrations above and at right).

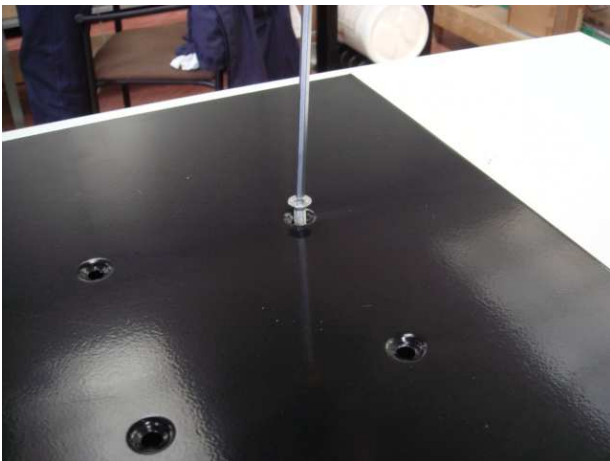


Adult Jig Assembly Instructions

Place the platen atop the support bracket, aligning the four holes on the platen with the corresponding holes on the support bracket (see illustrations at right and below).



5. Attach the platen to the support bracket with the four 1 1/8" screws, using the #4 metric hex wrench (see illustrations below).



Adult Jig Assembly Instructions

6. Mount a T-shirt on the platen and place the hoop over the shirt. Position the hoop such that the narrower (1-inch wide) side of the hoop with a black band along its length is closest to you, while the wider (1 9/16-inches wide) side is to your right, as you face the printer (see illustration below).



7. When mounting a T-shirt, be sure to tuck the sleeves under the platen to prevent them from extending outward to the sides when the jig is moving. If they extend outward to the sides, they may get caught in the openings between the jig and the sides of the printer, creating a jam. To be safe, it is best to secure the sleeves together and to the shirt collar with a small (3/4") binder office clip, which is included (see illustrations below).

