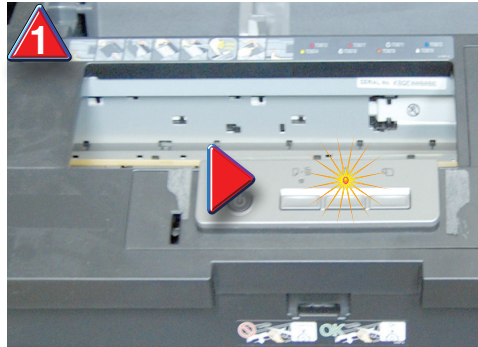


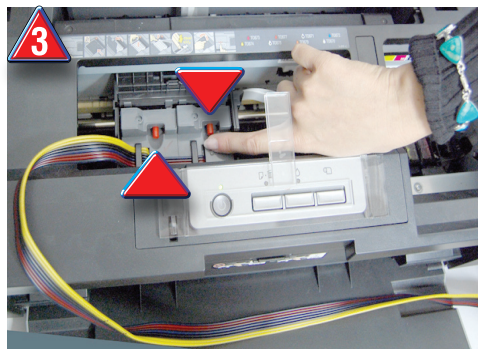
The **SubliJet**, **ArTainium** and **ChromaBlast Bulk Ink Systems** for the **Epson Stylus® R1900 Ink Jet Printer** contain two **Multi-Cartridge Housings** with four separate dampers each in lieu of the eight individual **OEM (Epson)** cartridges. These **Twin Multi-Cartridge Systems** have a single **Chip each** that periodically needs to be reset so that the printer can continue to use ink from the **Bulk Ink System**. The frequency of this reset action will rely on the number of images that are printed, and the choices and options to which the printer is set.



Once the printer “**recognizes**” that the ink levels have reached a certain point, it will **cease** to print, and the orange “**Ink Out**” light will start to **flash**.



Press the “**Ink Out**” **Button** until the **Cartridge Carriage** moves into the far right position. The **Cartridge Carriage** will come to rest in the **Cartridge Bay** area.



Press both of the **Red Reset Buttons** at the top of the **Bulk Ink System Multi-Cartridge Bodies** as indicated above.



Now, again, press the “**Ink Out**” **Button** on the **Control Panel**, and you’re done.

NOTE: If the reset process described does not reset your **Bulk Ink System**, please contact us at **Sawgrass Technical Support** at **888-253-1679**, or, E-mail support@sawgrassink.com.

The printer will begin to reset and recharge. After the printer has completed the resetting activity, the **orange** light will turn off. At this point the **Bulk Ink System** has been successfully reset and the printer is again ready for use.