



4800 CONFIGURATIONS FOR CHROMABLAST™ SYSTEMS

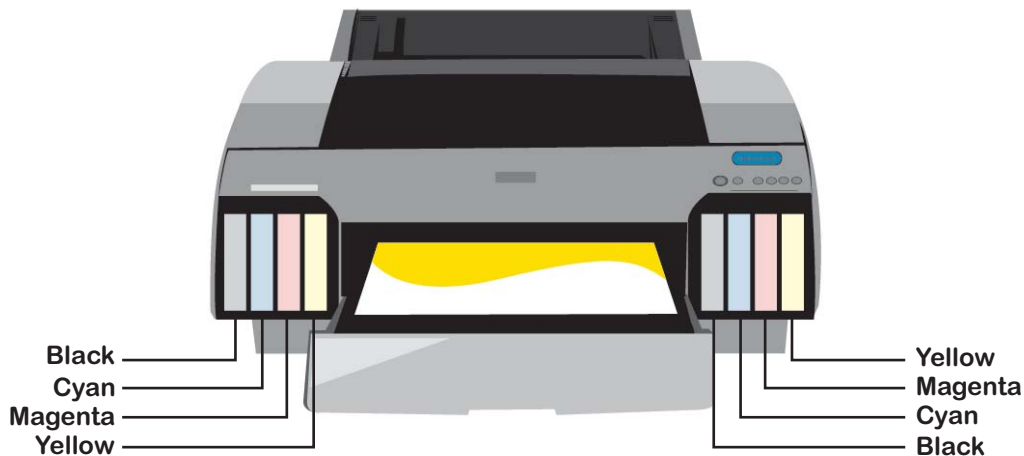
Dual CMYK ChromaBlast Version Option

ChromaBlast™ is a unique patented ink and media combination driven by powerful print software to create the best cotton imaging system available.

ChromaBlast™ Printer Configuration:

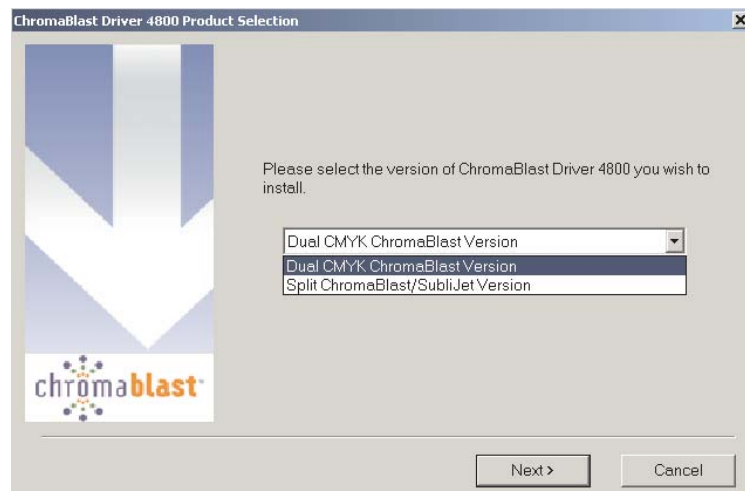
To setup your 4800 printer for ChromaBlast™ printing, you must load the cartridges as outlined below. It is imperative to the ChromaBlast Driver™ operation that you follow this cartridge setup. If you have any questions on this, please contact Sawgrass Technical Support at 843.884.1575 ex. 511

	Channel							
Configuration	1	2	3	4	5	6	7	8
OEM	Matte K	C	M	Y	Photo K	Lc	Lm	Lk
ChromaBlast™ Dual	K	C	M	Y	K	C	M	Y



ChromaBlast Driver™ Configuration:

When installing the ChromaBlast Driver™ you will be prompted to select the version of the driver you wish to install. If the printer is setup to run ChromaBlast™ ink only (as outlined above) select the Dual CMYK ChromaBlast Version. Then follow the prompts throughout the installation to complete the process. If you have any questions on this, please refer to the ChromaBlast Getting Started Guide or contact Sawgrass Technical Support at 843.884.1575 ex. 511



4800 CONFIGURATIONS FOR CHROMABLAST™ SYSTEMS

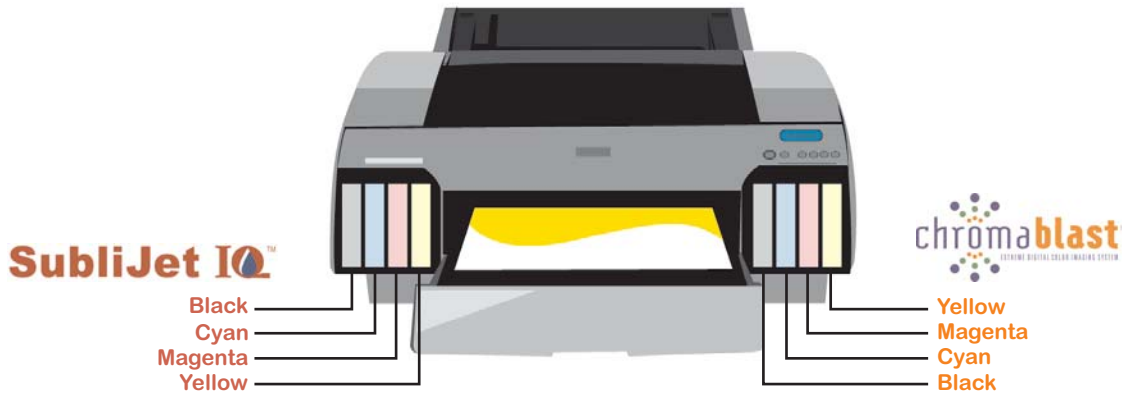
Split ChromaBlast™/SubliJet™ Version Option

An all-in-one system that features both ChromaBlast™ and SubliJet™ inks and gives your customers the option of printing on polyester or cotton in one system.

Split System Printer Configuration:

To setup your 4800 printer for split system printing, you must load the cartridges as outlined below. The Sublimation ink cartridges are loaded on the left side of the printer and the ChromaBlast™ ink cartridges are load on the right side of the printer. It is imperative to the printer driver operation that you follow this cartridge setup.

	Channel							
Configuration	1	2	3	4	5	6	7	8
OEM	Matte K	C	M	Y	Photo K	Lc	Lm	Lk
ChromaBlast™/SubliJet® Split	K(sub)	C(sub)	M(sub)	Y(sub)	K(CB)	C(CB)	M(CB)	Y(CB)

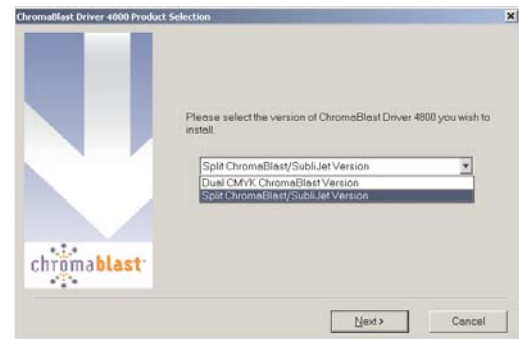


Printing:

The split system incorporates both of your current SubliJet™ and ChromaBlast™ inks for the 4800. We have developed drivers for the system and you will have to install both for printing. When printing with the SubliJet™ inks you must use the PowerDriver IQ™ Software. When printing with the ChromaBlast™ inks you must use the ChromaBlast™ driver.

ChromaBlast Driver™ Configuration:

When installing the ChromaBlast Driver™ you will be prompted to select the version of the driver you wish to install. If the printer is setup to run the split system (as outlined above) select the Split ChromaBlast/SubliJet Version. Then follow the prompts throughout the installation to complete the process.



PowerDriver IQ™ Configuration:

When installing PowerDriver IQ™ you will be prompted to select the version of the driver you wish to load. If the printer is setup to run the split sytem select PowerDriver IQ 4800 and when the next pop-up screen appears select the split SubliJet™/ChromaBlast™ version. Follow the prompts throughout the installation to complete the



If you have any problems or questions with any of the process please contact Sawgrass Technical Support at 843.884.1575 ex. 511