

Epson* Workforce

30

Office T30 & Office B40W

GETTING STARTED GUIDE

Rev 2.0

Note: For the ***absolute latest*** Information and Updates on all Products, Materials, Processes, and/or Procedures relative to ***all*** offerings by or through Sawgrass Technologies, Inc., Please refer to our Website: www.sawgrassink.com.

*EPSON and Stylus are registered trademarks of Seiko EPSON Corporation, which has not manufactured, sponsored or approved this product.

ChromaBlast™

Getting Started Guide for the

EPSON Workforce 30 / Office T30 / Office B40W

© Copyright 2009, **Sawgrass Technologies, Inc.**, Revision March 2009.

All rights reserved.

Printed in the **United States of America.**

ChromaBlast™ & **ChromaBlast™ Driver** are Trademarks of **Sawgrass Technologies, Inc.**,
Epson® and **Stylus®** are Registered Trademarks of **Seiko Epson Corporation.**

Other trademarks and registered trademarks are the property of their respective owners.

No part of this manual may be reproduced or transmitted in any form by any means without the prior written consent of **Sawgrass Technologies, Inc.** Information in this manual is subject to change without notice and does not represent a commitment on the part of **Sawgrass Technologies, Inc.**

IMPORTANT – READ CAREFULLY:

This **PROCESS LICENSE AGREEMENT** (“**PLA**”) is a legal agreement between **you** and **Sawgrass Technologies, Inc.** (“**Sawgrass**”). By installing the **ChromaBlast Ink** in your printer, or otherwise using the **Sawgrass ChromaBlast Ink**, you agree to be bound by the terms of this **PLA**. If you do not agree to the terms of this **PLA**, **Sawgrass** is unwilling to license the process of using the **ChromaBlast Ink** to you. In such event, you may not use the **ChromaBlast Ink**, and you should promptly contact your supplier for instructions on return of the unopened package.

The process of using the **ChromaBlast Ink** is protected by **U.S.** and foreign patents. **Sawgrass** will provide a complete list of the relevant patents upon request. The use of the **ChromaBlast Ink** to practice the patented process is permitted by this license.

GRANT OF LICENSE — This **PLA** grants you the following rights: You may install and use the **ChromaBlast Ink** packaged herewith in your **EPSON** printer to practice the printing process described in **U.S. Patent No. 6,341,856**. The use of any ink, dye, or pigment to practice the **Sawgrass Process**, other than a **ChromaBlast Ink** purchased from **Sawgrass** or its authorized distributor accompanied by a **PLA**, is not a licensed use of the **Sawgrass Process**. No rights to use the **Sawgrass Process**, except those specified herein, are granted, and no rights to use any other process, product, software, or hardware developed or sold by **Sawgrass** are granted or implied hereby.

LIMITATIONS ON REVERSE ENGINEERING — You agree that you will not attempt to reverse engineer, reproduce, or reformulate the **ChromaBlast Ink**.

PATENTS AND COPYRIGHTS — **Sawgrass** owns multiple **U.S.** and foreign patents which apply to the **Sawgrass Process** and/or the **ChromaBlast Ink** or its use. All patents in and to the **ChromaBlast Ink** and the method of using the **ChromaBlast Ink** are owned by **Sawgrass Technologies, Inc.** You may not copy the printed materials accompanying the **ChromaBlast Ink**. All rights not specifically granted under this **PLA** are reserved by **Sawgrass Technologies, Inc.**

Made In **U.S.A.**

CAUTION:

- For best printing results, use the ink within six months of purchase. Please refer to the individual ink bag/cartridge for the specific ink expiration date.
- Keep out of reach of children.
- Do not expose ink to temperatures above 100° F or below 40° F.
- Keep ink out of direct sunshine.

Sawgrass Technologies, Inc. agrees to replace any defective ink within a reasonable time, which shall be **Sawgrass'** sole responsibility for errors or defects in these goods.

THERE ARE NO OTHER WARRANTIES, EXPRESSED OR IMPLIED, INCLUDING, BUT NOT LIMITED TO, ANY IMPLIED WARRANTY OF MERCHANTABILITY OR ANY IMPLIED WARRANTY OF FITNESS FOR A PARTICULAR PURPOSE. SAWGRASS SHALL NOT BE LIABLE FOR LOSS OF PROFIT OR OTHER ECONOMIC LOSS, OR FOR INDIRECT, SPECIAL, CONSEQUENTIAL OR OTHER SIMILAR DAMAGES.

Sawgrass Technologies, Inc. Limited Warranty

QuickConnect & EasyFlow Bulk Ink Systems

What Is Covered:

Defects in materials and/or workmanship.

Length of Warranty Coverage:

The warranty coverage for the Bulk Ink System is one year from date of purchase. Any Bulk Ink System not purchased from Authorized Sawgrass Resellers is not covered.

How to get service:

Please contact Sawgrass Technologies Technical Support at (888) 253-1679 or an Authorized Sawgrass Reseller. A technical support representative will troubleshoot the issue and provide instructions on how to get a replacement if necessary.

What we will do:

Provide you, at the discretion of Sawgrass Technologies, with either replacement parts for your existing Bulk Ink System unit, a new Bulk Ink System unit, or at our option, a refurbished Bulk Ink System unit. The exchange is under warranty for the remainder of the original products' warranty period or 90 days, whichever is longer. The replacement will be shipped to you via ground shipment. Any rush shipments will be freight prepaid.

What your warranty does not cover:

Damage from misuse or neglect. Damage caused by use outside of Sawgrass Technologies recommendations.

Limitations of Warranty:

THERE ARE NO OTHER WARRANTIES, EXPRESSED OR IMPLIED, INCLUDING, BUT NOT LIMITED TO, ANY IMPLIED WARRANTY OF MERCHANTABILITY OR ANY IMPLIED WARRANTY OF FITNESS FOR A PARTICULAR PURPOSE. SAWGRASS SHALL NOT BE LIABLE FOR LOSS OF PROFIT OR OTHER ECONOMIC LOSS, OR FOR INDIRECT, SPECIAL, CONSEQUENTIAL OR OTHER SIMILAR DAMAGES.

Our Commitment:

- Provide the **Highest Level of Quality & Proactive Service** to **YOU**, our **Valued Customer**.
- To **Provide YOU** with the **Tools, Skills, Support** and **Solutions** to **Effectively Improve YOUR Bottom Line**.

D-USER LICENSE AGREEMENT FOR SAWGRASS SOFTWARE ChromaBlast Driver

IMPORTANT — READ CAREFULLY: This **Sawgrass Technologies Inc. End-User License Agreement** (“EULA”) is a legal agreement between **you** (either an individual or a single entity) and **Sawgrass Technologies, Inc.** for the **Sawgrass Software Product** identified above, which includes computer software and may include associated media, printed materials, and “online” or electronic documentation (“**SOFTWARE PRODUCT**”). By installing, copying, or otherwise using the **SOFTWARE PRODUCT**, you agree to be bound by the terms of this **EULA**. If you do not agree to the terms of this **EULA**, do not install or use the **SOFTWARE PRODUCT**.

SOFTWARE PRODUCT LICENSE — Copyright laws and international copyright treaties, as well as other intellectual property laws and treaties protect the **SOFTWARE PRODUCT**. The **SOFTWARE PRODUCT** is licensed, not sold. The title to, and ownership of, this **SOFTWARE PRODUCT** remains with **Sawgrass Technologies, Inc. (Sawgrass)**.

GRANT OF LICENSE — This **EULA** grants you the following rights:

- This license is provided to you for your use according to the terms hereof. You may install and use the **SOFTWARE PRODUCT** packaged herewith to practice the printing process described in **U.S. Patent No. 5,488,907** (the “**Sawgrass Process**”). The use of any ink, dye or pigment to practice the **Sawgrass Process**, other than a **NaturaLink Ink** that is purchased from **Sawgrass** or its authorized distributor, is not a licensed use of the **SOFTWARE PRODUCT**. You agree not to use the **SOFTWARE PRODUCT** for any other purpose or in any process except as expressly permitted hereby.
- **Not for Resale**—You may not sell, or otherwise transfer for value, the **SOFTWARE PRODUCT**.
- **No Reverse Engineering, Decompilation, Copying or Disassembly**—You may not reverse engineer, decompile, copy or disassemble the **SOFTWARE PRODUCT**.
- **No Rental**—You may not rent, lease, or lend the **SOFTWARE PRODUCT**.
- **Support Services**—**Sawgrass Technologies, Inc.** may provide you with support services related to the **SOFTWARE PRODUCT** (“**Support Services**”). Use of **Support Services** is governed by the **Sawgrass Policies and Programs** described in the **Getting Started Guide**, in “online” documentation, and/or in other **Sawgrass-Provided** materials. Any supplemental software code provided to you as part of the **Support Services** shall be considered part of the **SOFTWARE PRODUCT** and subject to the terms and conditions of this **EULA**. With respect to technical information you provide to **Sawgrass** as part of the **Support Services**, **Sawgrass** may use such information for its business purposes, including for product support and development. **Sawgrass** will not utilize such technical information in a form that personally identifies you.
- **No Assignment or Sublicense**—You may not assign or sublicense the rights granted hereby.
- **Termination**—Without prejudice to any other rights, **Sawgrass** may terminate this **EULA** if you fail to comply with the terms and conditions of this **EULA**. In the event of termination, you must destroy all copies of the **SOFTWARE PRODUCT** and all of its component parts.

COPYRIGHT—All title and copyrights in and to the **SOFTWARE PRODUCT** (including but not limited to any images, photographs, animations, video, audio, music, text, and "applets" incorporated into the **SOFTWARE PRODUCT**), the accompanying printed materials, and any copies of the **SOFTWARE PRODUCT** are owned by **Sawgrass Technologies, Inc.** or its suppliers. Copyright laws and international treaty provisions protect the **SOFTWARE PRODUCT**. Therefore, you must treat the **SOFTWARE PRODUCT** like any other copyrighted material, except that you may install the **SOFTWARE PRODUCT** on a computer for the uses permitted hereby. You may not copy the printed materials accompanying the **SOFTWARE PRODUCT**. You may not loan, rent, lease, or otherwise transfer the other medium to another user, except as part of the permanent transfer (as provided above) of the **SOFTWARE PRODUCT**.

U.S. GOVERNMENT RESTRICTED RIGHTS—The **SOFTWARE PRODUCT** and documentation are provided with **RESTRICTED RIGHTS**. Use, duplication, or disclosure by the Government is subject to restrictions as set forth in subparagraph (c)(1)(ii) of the **Rights in Technical Data and Computer Software** clause at **DFARS 252.227-7013** or subparagraphs (c)(1) and (2) of the **Commercial Computer Software-Restricted Rights** at **48 CFR 52.227-19**, as applicable.

MISCELLANEOUS:

- a.** If you acquired this product in the **United States**, this **EULA** is governed by the laws of the **State of South Carolina**. In the event of any dispute arising under this license or from the use of the **SOFTWARE PRODUCT**, each party irrevocably agrees to the jurisdiction of the **United States District Court** for the **District of South Carolina, Charleston Division**.
- b.** If you acquired this product in **Canada**, this **EULA** is governed by the laws of the **Province of Ontario, Canada**. In the event of any dispute arising under this license or from the use of the **SOFTWARE PRODUCT**, each party irrevocably agrees to the jurisdiction of the courts of the **Province of Ontario** and further agrees to commence any litigation that may arise hereunder in the courts located in the **Judicial District of York, Province of Ontario**.
- c.** If this product was acquired outside the **United States**, then local law may apply.

LIMITED WARRANTY—Sawgrass warrants that (a) the **SOFTWARE PRODUCT** will perform substantially in accordance with the accompanying written materials for a period of thirty (30) days from the date of receipt, and (b) any **Support Services** provided by **Sawgrass** shall be substantially as described in applicable written materials provided to you by **Sawgrass**, and **Sawgrass** support engineers will make commercially reasonable efforts to solve any problem issues. Some states and jurisdictions do not allow limitations on duration of an implied warranty, so the above limitation may not apply to you. To the extent allowed by applicable law, implied warranties on the **SOFTWARE PRODUCT**, if any, are limited to thirty (30) days.

CUSTOMER REMEDIES—Sawgrass' and its suppliers' entire liability and your exclusive remedy shall be repair or replacement of the **SOFTWARE PRODUCT** that does not meet **Sawgrass' Limited Warranty** and which is returned to **Sawgrass** with a copy of your receipt. This **Limited Warranty** is void if failure of the **SOFTWARE PRODUCT** has resulted from accident, abuse, or misapplication. Any replacement **SOFTWARE PRODUCT** will be warranted for the remainder of the original warranty period or thirty (30) days, whichever is longer. Outside the **United States**, neither these remedies nor any product support services offered by are available without proof of purchase from an authorized international source.

NO OTHER WARRANTIES—To the maximum extent permitted by applicable law, **Sawgrass** and its suppliers disclaim all other warranties and conditions, either express or implied, including, but not limited to, implied warranties of merchantability, fitness for a particular purpose, title, and non-infringement, with regard to the **SOFTWARE PRODUCT**, and the provision of or failure to provide **Support Services**. This **Limited Warranty** gives you specific legal rights. You may have others, which vary from state/jurisdiction to state/jurisdiction.

LIMITATION OF LIABILITY—To the maximum extent permitted by applicable law, in no event shall **Sawgrass** or its suppliers be liable for any special, incidental, indirect, or consequential damages whatsoever (including, without limitation, damages for loss of business profits, business interruption, loss of business information, or any other pecuniary loss) arising out of the use of or inability to use the **SOFTWARE PRODUCT** or the provision of or failure to provide **Support Services**, even if **Sawgrass** has been advised of the possibility of such damages. In any case, **Sawgrass'** entire liability under any provision of this **EULA** shall be limited to **U.S. \$5.00**. Because some states and jurisdictions do not allow the exclusion or limitation of liability, the above limitation may not apply to you.

ChromaBlast™, ChromaBlast Driver™, and ColorSure™ are Trademarks of **Sawgrass Technologies, Inc.**

General Notice: Other product names used herein are for identification purposes only and may be trademarks of their respective owners. Sawgrass Technologies, Inc. disclaims any and all rights in those marks.

Table of Contents

Agreements and Warranties

ChromaBlast™; Process Licence Agreement	iv
ChromaBlast™ QuickConnect™ Warranty	v
End User Licence Agreement: ChromaBlast™ Driver	vi
Warranties & Miscellaneous	vii
Table Of Contents	1

Printer Setup

Introduction	3
About This Document	4
Installing ChromaBlast™ Cartridges	5
Replacing an Empty Cartridge	8

BULK INK SYSTEM QuickConnect® Installation Guide:

BULK INK SYSTEM QuickConnect® Installation: Preparation	11
Printer Setup for the WF30/T30/B40W	13
QuickConnect® Installation: Tips	15
Chip Reset Instructions	16
Printing & Heat Transfer Instructions	17

Getting Started Guide:

About Your ChromaBlast Driver Software	20
System Requirements: ChromaBlast Driver	20
Product Overview: ChromaBlast Driver	21
Installation/Registration: ChromaBlast Driver	21

Using ChromaBlast Driver for the Epson WorkForce 30/T30/B40W

Quick Start Example (CorelDRAW)	30
Setting CB Driver Document Properties/Printing Preferences	32
From the Windows Desktop	32
From an Application	35

Table of Contents (Continued)

ChromaBlast Driver

ChromaBlast Driver Properties (Registered Version):	37
Group 1–Configuration: ChromaBlast Driver Tab	38
Group 2–Color Settings: ChromaBlast Driver Tab	38
Group 3 – Printer Options: ChromaBlast Driver Tab	39

Appendices

Appendix A: Over-riding CorelDRAW Software Color Management	40
Appendix A: Over-riding Photoshop Software Color Management.....	42
Appendix B: Using ColorSure™ and Custom Palette	46
Supplies & Equipment.....	52
Storage	52
Troubleshooting	53
Technical Support.....	55
Notes (A place for Your Notes).....	56

Introduction

Congratulations on your purchase of **ChromaBlast Digital Transfer Inks**. The **ChromaBlast Ink Cartridges** are the latest advancement for the **EPSON WF30/T30/B40W** from **Sawgrass Technologies, Inc.**, a leader in the development of digitally driven color transfer technologies and related products.

With this system, your printed images can be transferred onto any natural fiber product designed to accept thermally transferred dyes including: t-shirts, caps, coats, bags, purses, sweats, etc. resulting in attractive, durable products. Your imagination is the limit for producing brilliant, near photo-quality images, graphics and more. **ChromaBlast** is ideal for markets that personalize, customize or create short-run output.

In addition, your system is bundled with **ChromaBlast Driver**, a user-friendly color management software package that allows the user to create flawless transfers in less time. Design time is also condensed by utilizing the **ColorSure Palette**. The color palette contains more spot colors and the custom palette gives users the ability to add, edit, import or export colors, thus streamlining the color matching process. Instructions for installation and use of this system can be found in this **User's Guide**.

This document contains information for using **ChromaBlast Inks** and helpful tips are also provided for getting the best results from your transfers. The information provided pertains only to the use of **ChromaBlast** in your **EPSON WF30/T30/B40W Printer**. If you have questions about the operation of your **EPSON Printer**, refer to the **EPSON WF30/T30/B40W Printer User's Guide**.

Technical Support is available from your **Authorized SubliJet Reseller** or directly from **Sawgrass Technologies, Inc.** See the section entitled **Technical Support** for additional information.

We at **Sawgrass** strive to provide you with the tools to make the sublimation process easy to learn and simple to master. We hope you will find that the tools we have developed will make your years in the sublimation business fun and profitable. Please feel free to contact us with your feedback about our products. For additional information on our other products, visit our web site at www.sawgrassink.com.

Thank you and enjoy your **ChromaBlast Printing System**.

About this Document

This document contains descriptions and procedures for using **ChromaBlast Inks**, along with additional information for getting the best results from your transfers. The documentation provided pertains only to the use of **ChromaBlast Inks** in your **EPSON WF30/T30/B40W Ink Jet Printer**. To assist you in the overall setup process, references are made back to the **EPSON WF30/T30/B40W Printer Basics Guide** for instructions. To help point out important information, specific instructions, and helpful tips, look for the following symbols:



Danger

Indicates a hazard that could seriously compromise the use of the machine, and/or the physical safety of the operator.



Warning

Indicates “Must Do” items, significant warnings, and Important guidelines. These must be followed to prevent damage to your printer.



**Suggestion
/Remark**


Indicates suggestions to optimize the operation of your machine, or the printing process.

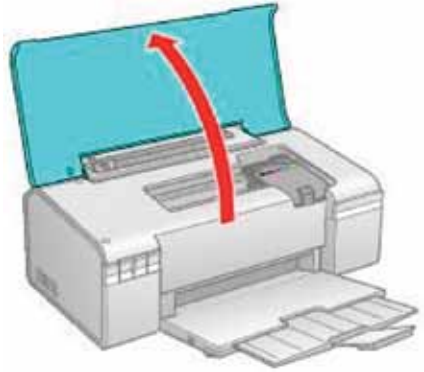



Tip

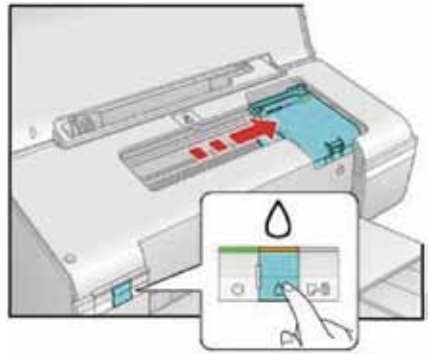
Indicates the useful “Tips”, materials, practices, and /or observances that will have a beneficial impact on either the printing and/or the sublimation processes.

Installing ChromaBlast™ Cartridges

1. Make sure the printer is on.
2. Open the printer cover.
3. Press and release the **Ink Button** . The power and ink lights flash.

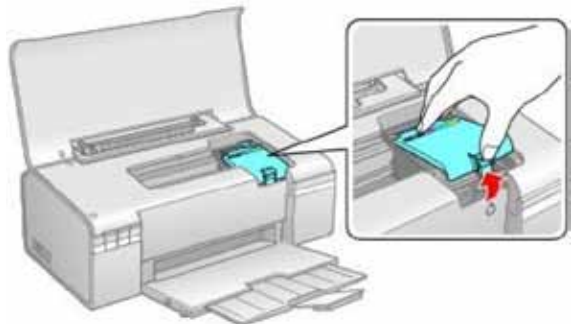


4. Press the **Ink Button** again  for one second to move the print head into the cartridge replacement position.

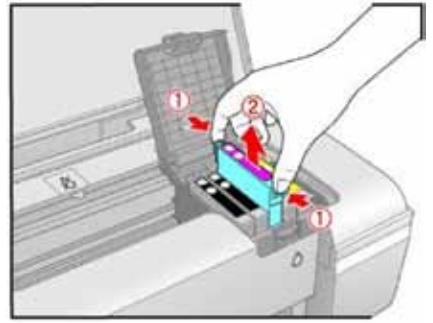


Do not hold the Ink Button for more than 3 seconds or the printer will clean the print head. Do not move the print head by hand. Do not open the cartridge cover when the print head is moving.

5. Open the cartridge cover.



6. Squeeze the tab at the back of the Epson Cartridge and lift it straight out. Remove all Epson cartridges from the cartridge holder.



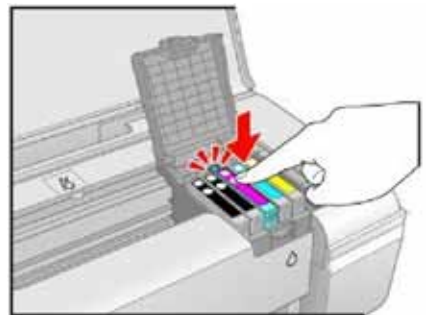
7. **DO NOT, IN ANY WAY, SHAKE OR OTHERWISE AGITATE CARTRIDGES, BEFORE OR AFTER INSTALLATION.**



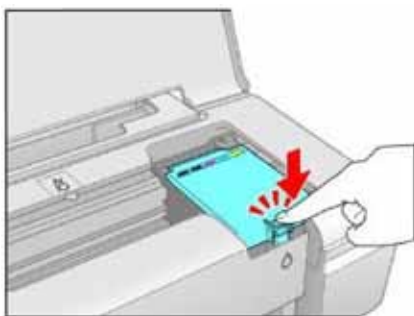
8. Remove the yellow tape from the bottom of the ink cartridge.



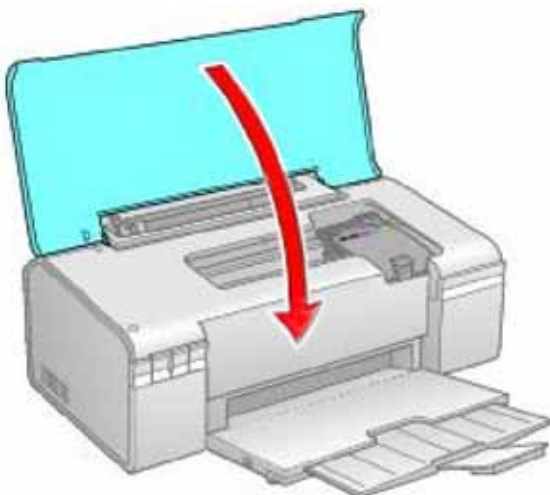
9. Place the new ink cartridge into the cartridge holder and push it down until it clicks into place.




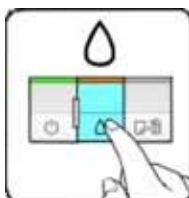
- 10.** Once the **ChromaBlast** cartridges are in place, close the ink cartridge cover and press it until it clicks into place.



- 11.** Close the printer cover.




- 12.** Press the ink button  for one (1) second. The printer begins charging ink and the power light starts flashing. This takes about 1 ½ minutes. When it's finished, the power light stops flashing & remains on, & the ink light goes out.

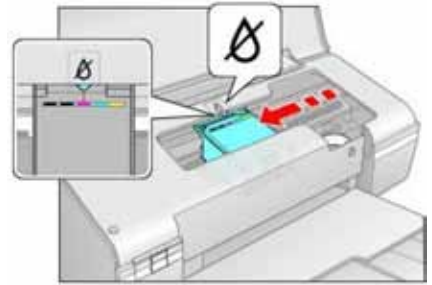
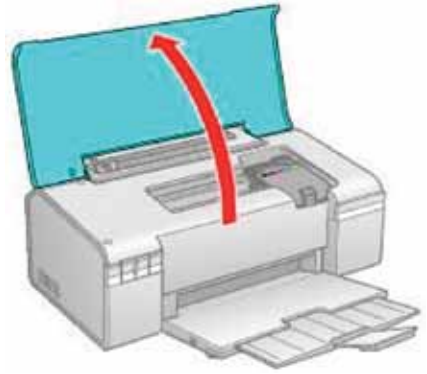



Never turn off the printer while the power light is flashing or you'll waste ink. If the ink light stays on (not flashing), the ink cartridge may not be installed correctly. Press the ink button again and reinstall the ink cartridge until it clicks into place.

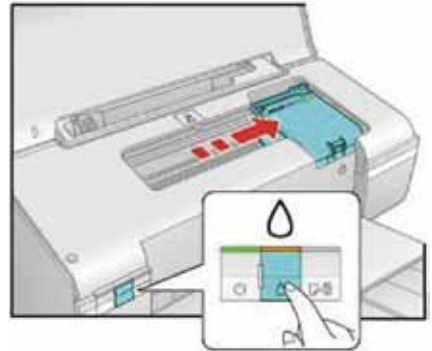
Replacing an Empty Cartridge

Make sure you have a new ink cartridge before you begin. Once you begin the replacement, you must complete all the steps in one session.

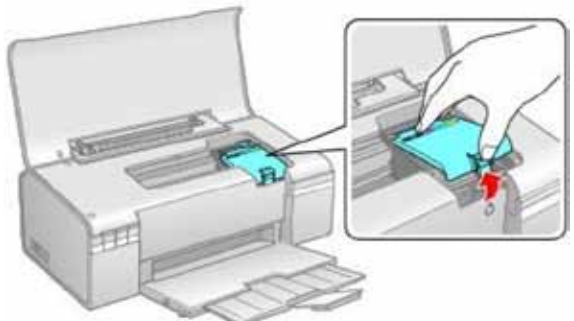
1. Make sure the printer is on.
2. Open the printer cover.
3. Press and release the ink button . The power and ink lights flash. If one of the cartridges is low or expended, the printer moves that cartridge to the expended ink mark. If none are low or expended, the ink cartridge holder moves to the ink replacement position.



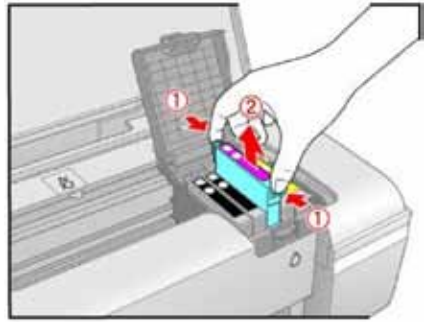
4. Press the ink button  again. If another cartridge is low or expended, it moves to the expended ink mark. Once the printer identifies all of the low or expended ink cartridges, the print head moves to the ink cartridge replacement position.



5. Open the cartridge cover.



6. Squeeze the tab at the back of the Epson Cartridge and lift it straight out. Dispose of it carefully.



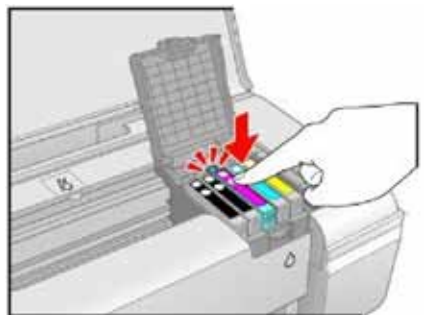
7. **DO NOT, IN ANY WAY, SHAKE OR OTHERWISE AGITATE CARTRIDGES, BEFORE OR AFTER INSTALLATION.**



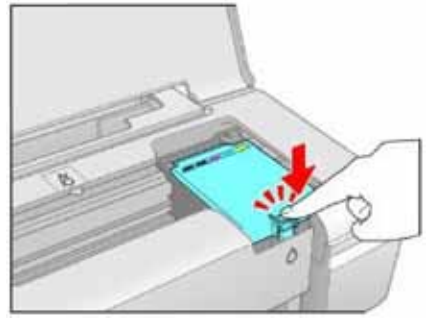
8. Remove the yellow tape from the bottom of the ink cartridge.



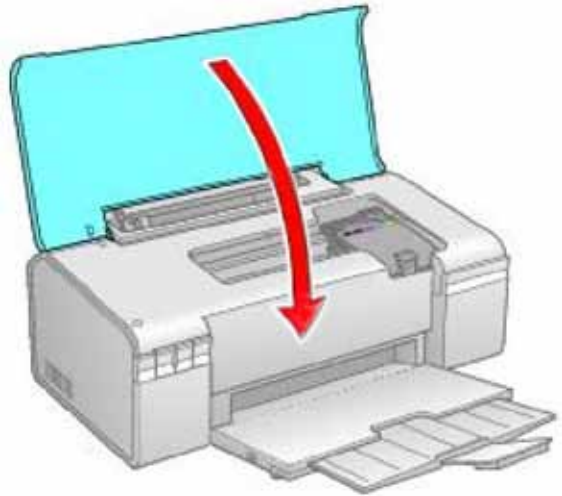
9. Place the new ink cartridge into the cartridge holder and push it down until it clicks into place.




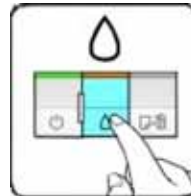
10. Once the **ChromaBlast** cartridges are in place, close the ink cartridge cover and press it until it clicks into place.



11. Close the printer cover.



12. Press the ink button  for one (1) second. The printer begins charging ink and the power light starts flashing. This takes about 1 ½ minutes. When it's finished, the power light stops flashing and remains on, and the ink light goes out.



Never turn off the printer while the power light is flashing or you'll waste ink. If the ink light stays on (not flashing), the ink cartridge may not be installed correctly. Press the ink button again and reinstall the ink cartridge until it clicks into place.



Before you begin:

It is crucial that the **OEM** ink supplied with your printer is installed before you attempt to install your **ChromaBlast Inks**. This allows for two things: First, it primes the ink delivery system, ensuring that the **ChromaBlast Ink** will load more easily. Second, it familiarizes you with the basic operation of your printer. Please see the **EPSON Stylus WF30/T30/B40W Printer User's Guide** for instructions on installation.

Bulk Ink System ChromaBlast QuickConnect Setup for the WF30/T30/B40W

Check to ensure that you have all of the components necessary to setup your QuickConnect system:

- Bulk Ink Dampers & Tubes
- Plastic Arm with Velcro Adhesive
- 4 Plastic Syringes for Priming
- 3 Plastic Dividers
- PowerDriver CD
- QuickConnect Box
- ChromaBlast Ink bags (not included with QuickConnect system)
- Printer

1. Remove the soft protective cap from each ink bag. Depress the metal tab on the inside of the Quick Connect box and insert the plastic ink valve into place. Release the metal tab to lock the bag into place. Insert the black plastic dividers to separate between the four ink bags.

Note: There are 5 (five) bulk ink dampers, but only 4 ink bags. Two dampers are supplied by the Black ink bag. The Black ink bag has a “Y” tube splitter that fills both black ink dampers.

2. Set the bulk ink dampers face down on a flat surface with the round openings facing up. Pierce the thin plastic tab that covers the opening using the tip of the syringe or a sharp object such as a ball point pen. Firmly insert the tip of the plastic syringe into the gasketed opening until the tip is completely inserted.

Note: The plunger needs to be completely inserted into the syringe.



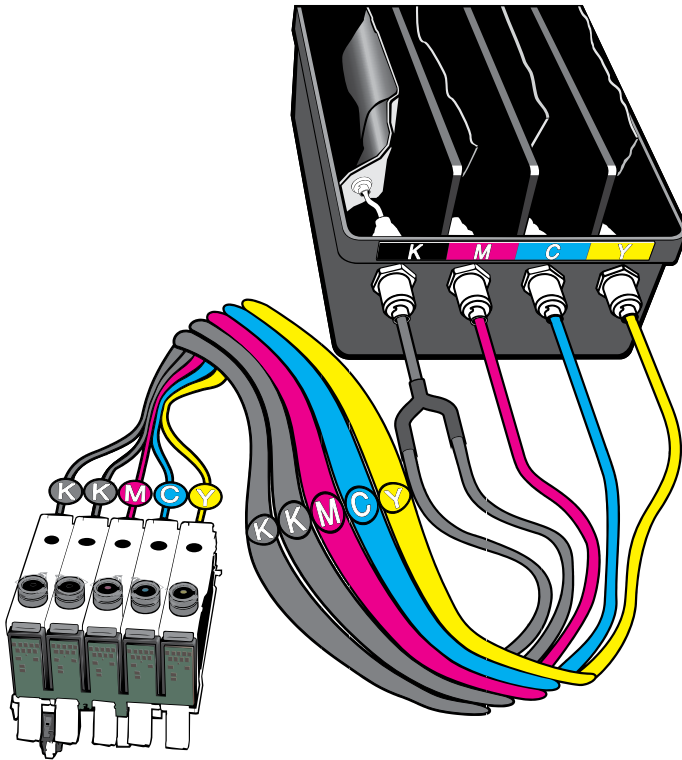
3. Slowly extract the plunger. Ink will start to flow through the tubing into the damper. Continue extracting the plunger until ink begins to flow into the tip of the syringe.

Note: You may have to repeat this process twice to complete the priming of each ink damper.



Repeat this process for the other four channels.


Note: You may have to take the syringe out, lower the plunger and reinsert it into the damper in order to completely prime the damper cartridges.



Once the ink bags have been connected your **QuickConnect Bulk Ink System** should look like the graphic above.

Printer Setup for the WF30/T30/B40W



1. Turn the printer on. Wait for the printer to complete its start-up procedure. Lift the lid, and press the ink button . The ink cartridge bay will shift into a position on the right.



2. Raise the lid of the ink cartridge bay.



3. Firmly grasp the lid and twist it sideways until it becomes dislodged. The lid will not be needed for proper functioning of the printer with either the Quick Connect system or individual ink cartridges.



4. The ink cartridge bay should look like the picture above after removing the ink cartridge cover.



5. Remove the printer cover panel by inserting a flat head screwdriver between the panel and the printer. Gently push the cover panel loose.



6. Insert the flat head screwdriver into the opposite side of the printer. Hold the cover panel with one hand, gently push the cover panel loose and remove it.



7. Place the ink dampers into the empty ink bay cartridge. The Black ink damper should be on the far left side, the yellow on the far right side.

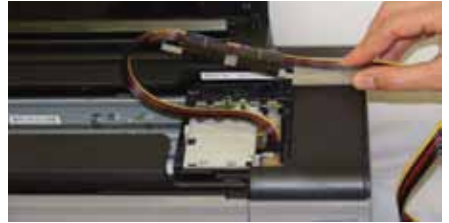


8. Firmly push down the plastic cartridge set of dampers to completely engage the ink dampers into place.

Note: You will have to push each individual damper hinge into position until it clicks into place. **The printer will not 'recognize' the ink damper until it is firmly pushed into place.**



9. Install the plastic support arm. First remove the adhesive backing on the back of the plastic arm.



10. The plastic tubing comes pre-attached to the plastic arm with two adhesive bands. Position the plastic arm on the far right side of the printer.



11. The plastic arm should be aligned so that the edge of the adhesive Velcro® is situated at the top right hand corner of the ink cartridge bay. Press the plastic arm firmly to set the adhesive Velcro® in place.



12. Press printer ink button (second button on the left side of the printer). The printer will start to prime and reset itself. The ink cartridge carriage will move in position.

Congratulations! You have installed your **WF30/T30/B40W** Quick Connect bulk ink system. You are now ready to install the **ChromaBlast Driver Software**.



- Read the documentation on installing and using your PowerDriver WF30/T30/B40W IQ Driver.
- Perform a nozzle check from the Epson driver utility – a few cleanings may be necessary to prime the system.
- You may have a little air in your lines but this will clear after a few prints.
- If you are going to leave your system without using it for several days, you should turn the plastic valves on the ink bags to the shut/off position.
- Do not raise the ink box higher than the printer.
- If the printer's red in-out light (middle light on the front panel) stays lit, then remove the ink cartridge damper and reinstall it making sure to firmly press each ink cartridge into place.

CHIP RESET INSTRUCTIONS

The ChromaBlast QuickConnect bulk ink system for the Epson WF30/T30/B40W printer contains a cartridge with five individual dampers that is used in place of the individual OEM (Epson) cartridges. This bulk ink system cartridge has a single chip that periodically needs to be reset so that the printer can continue to use ink from the bulk ink system. The frequency of this reset action will depend upon the number of images that are printed and the printer settings.

The following are simple instructions for resetting the bulk ink system.



1. Once the printer recognizes that the ink levels have reached a certain level, it will cease to print and the orange ink-out light will start to flash.



2. Press the ink-out button until the ink carriage moves into the far right position. The ink carriage will come to rest in the carriage bay area.



3. Press the white reset button at the top of the bulk ink system ink cartridge.



4. Again, press the ink out button on the front of the printer.

5. The printer will begin to reset and recharge. After the printer has completed the resetting activity, the orange light will turn off. At this point the bulk ink system has been successfully reset and the printer is again ready for use.

RECOMMENDED APPLICATIONS

White or light colored 100% cotton fabrics.

ChromaBlast Transfers: Step-By-Step

Once your ChromaBlast System is set up and in place, printing and transferring an image onto a white or light colored 100% cotton garment is a breeze. Just follow these simple steps, and you are on your way to creating one-of-a kind, beautiful and profitable products.

- 1.) Import an image (it could be a photograph from a digital camera) into your graphics application and manipulate it to suit your desired result. Manipulation may include sizing the graphic, setting the proper page margins and borders for printing or applying color correction if required.
- 2.) Load ChromaBlast paper into your printer. The printable side is opposite the ChromaBlast logo.
- 3.) Click Print in your application and select the ChromaBlast driver as the printing device. Ensure that the Mirror option is selected, unless you have already reversed the image in your graphics application.
- 4.) Adjust your heat press settings. See chart below for suggested settings.
- 5.) Place the garment on the heat press, and place the ChromaBlast paper, with the image facing down, over the garment. Close the heat press.
- 6.) After the allotted time, release the press and move the heat platen aside. While still hot, and with an even motion, peel the ChromaBlast paper off the garment (hot peel), and stretch the image area from top to bottom and side to side to reduce the hand on the fabric.

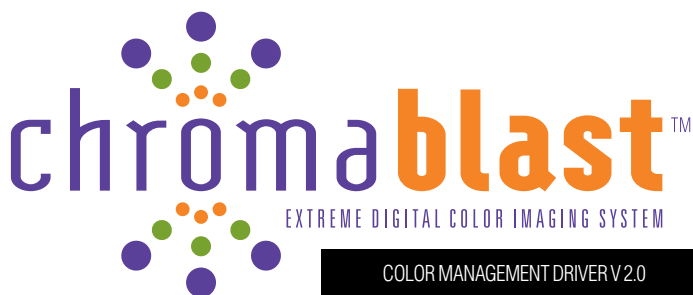
ChromaBlast / ChromaBlast-R (Suggested Press Parameters)		
	U.S.	Europe
Temperature	375°F - 400° F	190°C - 204°C
Pressure	60 psi (High)	4.22 kg/cm ² ; 4.14 bar
Time	40 sec – 25 sec	40 sec – 25 sec

IMPORTANT: Due to variations in garments and heat presses, these settings may vary. For best results, test different **time/ temperature** combinations to find one that works best with your **garment/ heat press** combination. Please note, higher **temperatures** generally require less **time** to prevent scorching. An insufficient **time/ temperature** combination may hinder ChromaBlast from completely curing to the cotton fibers, thus resulting in wash out.

STORAGE INSTRUCTIONS

Store ChromaBlast Media in a cool, dry environment. Do not remove media from protective packaging until ready to use. Once packaging has been opened, store media in the plastic zip-loc bag provided.

NOTES



Getting Started Guide

For the

EPSON Stylus® Photo WF 30/T30/B40W Inkjet Printer

For Distribution With
ChromaBlast™ Ink ONLY
NOT FOR RESALE

Revision 1.0

About Your ChromaBlast Driver Software

Sawgrass Technologies, Inc.'s **ChromaBlast System** with **ChromaBlast™ Digital Printing Inks**, featuring the **Epson WorkForce 30/T30/B40W**, comprise a few of the key tools required to ensure high quality output each time you print. **ChromaBlast Driver Color Management Software** provides everything else needed in the way of tools.

ChromaBlast Driver Color Management Software is a professional grade color management program that provides **ChromaBlast™** users with the necessary tools to ensure colors print right the first time. **ChromaBlast Driver** software is available for all major **Windows** based operating systems. To be sure of system compatibility, please visit us at <http://www.sawgrassink.com/v.php?pg=296>.

ChromaBlast Driver software and profiles are intended to give you simple, easy to use color management tools to take the guesswork out of color printing. With the click of your mouse you can automatically optimize colors for virtually any cotton substrate. This is a valuable tool that saves you time, money, and limits your need for costly sampling trying to get the job right.

ChromaBlast Driver also comes standard with the **ColorSure Palette** matching system. The **ColorSure Palette** is absolutely the best way to achieve spot color accuracy in sublimation transfers. The palette includes more than 170 colors that, when loaded into your graphic design software, allows you to fill solid portions of artwork with a color from the palette, thus knowing how it will look once transferred. With the help of the **ColorSure Palette**, you will successfully choose the correct colors, whether you are matching colors for a custom order or selecting colors for new artwork.

ChromaBlast Driver is the most advanced color management software available on the market for digital transfer systems. This software was developed specifically for desktop sublimation systems; you will discover enhanced functionality as well as a new level of color output when **ChromaBlast Driver** is used. You and your customers are about to truly experience the next generation in digital color!

SYSTEM REQUIREMENTS

Minimum Hardware and Recommended Operating System:

- **A Pentium Dual Core, 3.0 GHz** or higher processor is recommended.
- **512 MB RAM** is the minimum recommended memory.
- **2 GB RAM** is highly recommended to process larger documents with high quality settings.
- **5 GB of Free Hard Drive** is required for proper software and file management.

Product Overview – ChromaBlast Driver

ChromaBlast Driver is a color management software solution that has been written as a windows printer driver. It is designed to work with **Epson** ink-jet printers and **Sawgrass** sublimation ink. The installation program will automatically install the **Sawgrass ChromaBlast Driver Printer Driver** software, and **ColorSure** tools and utilities.

Step By Step Installation – ChromaBlast Driver

1. The Welcome screen is displayed. Click Next to proceed.

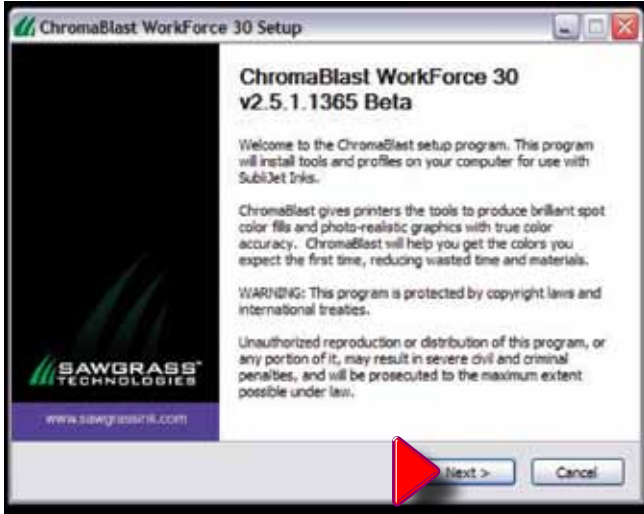


Figure 1

2. The **License Agreement** is displayed next. Select the appropriate choice for acceptance of the **License Agreement** to continue.



Figure 2

3. Choose the various components for installation. Check the boxes next to the components you want to install, and uncheck the boxes next to the components you don't want to install. Click “Next” to continue.

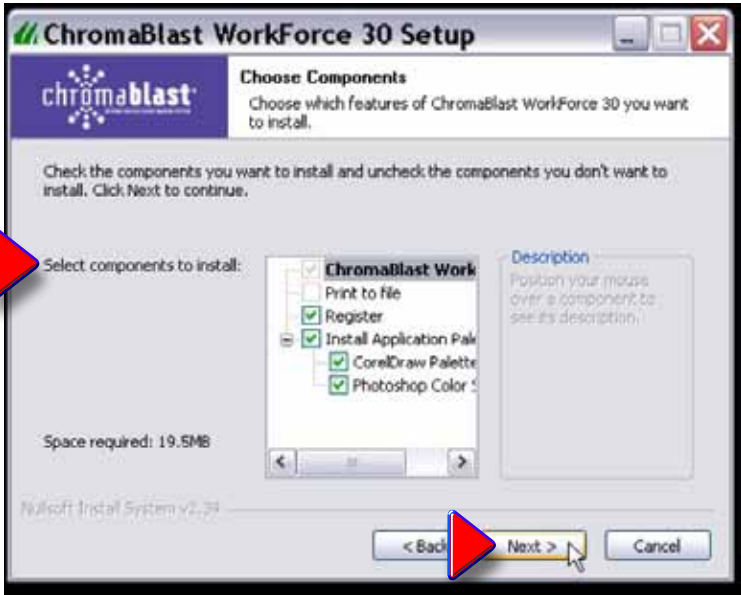


Figure 3

4. Setup will install “ChromaBlast WorkForce 30./ T30./B40W” in the following folder. To install in a different folder, click “Browse” and select another folder. Click “Install” to start the installation.

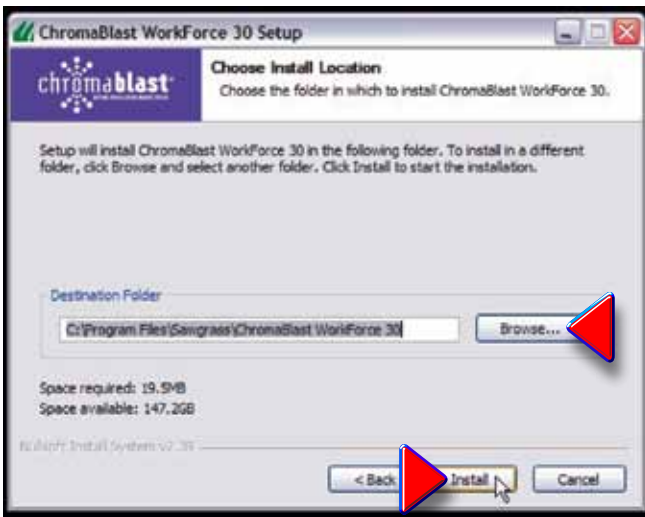


Figure 4

5. As installation proceeds, the screen below may appear periodically to indicate the degree of installation accomplished.

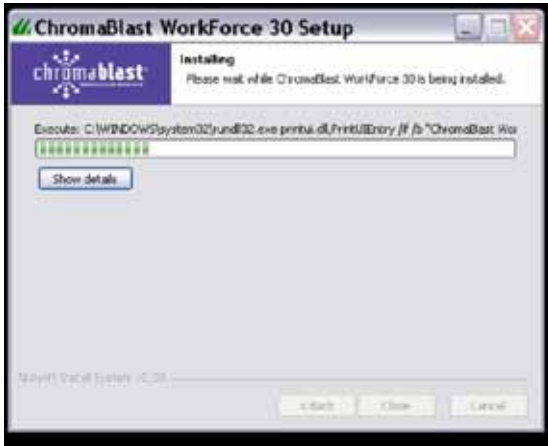


Figure 5

6. This “File Progress” Screen also shows repeatedly to keep you up-to-date.

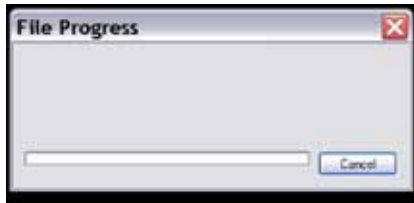


Figure 6

7. If you see the “Hardware Installation” Screen below, click “Continue Anyway” to proceed with the Installation.



Figure 7

8. This “File Progress” Screen once more to keep you up-to-date.

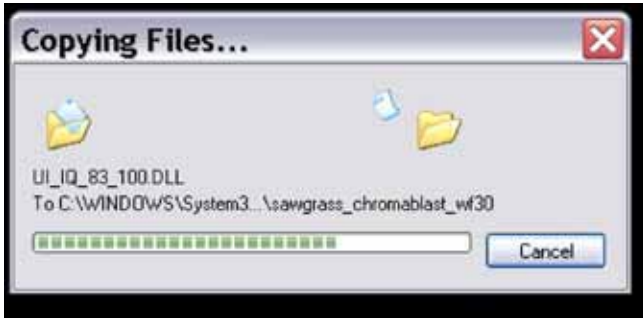


Figure 8

9. If you have not previously registered the **ChromaBlast Driver**, you will be prompted to do so. Registering is the only way to take full advantage of the advanced features in **ChromaBlast Driver**. If you choose to register later, select “**Register Later**” and click “**Next**” to proceed with the installation. (Fig. 4) You will have five days to use the program before registration will be required for continued usage of the software. After five days, if you attempt to print using the **ChromaBlast Driver Software**, you will be prompted to register. (Fig. 5)

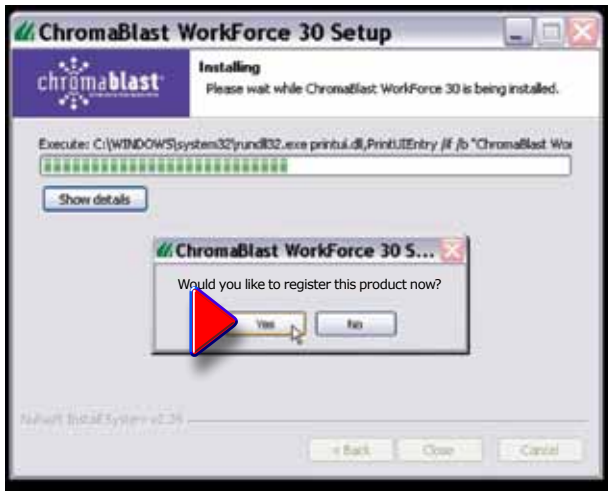


Figure 9



If you decide to register later, and continue using the driver during the initial **five day pre-registration grace period**, your system will generate the following **Pop-Up Screen**. Go to the printing preferences page of the **ChromaBlast WF 30/T30/B40WDriver** and click on “**Register.**”

10. In the **ChromaBlast Registration Screen** shown next, (**Fig. 11**), you will use your **Product ID** (displayed at the bottom of **Figure 11**), to register and obtain a **Registration Code**. A **Registration Code**, (or **Codes**), may be had in any of the following ways:

- a) **Register** on-line and receive your **Registration Code** via **E-mail**.
- b) Call **Sawgrass Technologies, Inc.** directly **(888) 253-1679** and obtain your code over the **Phone**.
- c) Send a fax and receive your **Registration Code** by **Fax**.

You must have a separate **Registration Code** for every machine on which **ChromaBlast WF 30/T30/B40W** is installed. The swiftest procedure by far is option **a**), by **E-mail**, in which case, in **Figure 11**, click on the button labeled **“Click here to Obtain Registration Code”**.

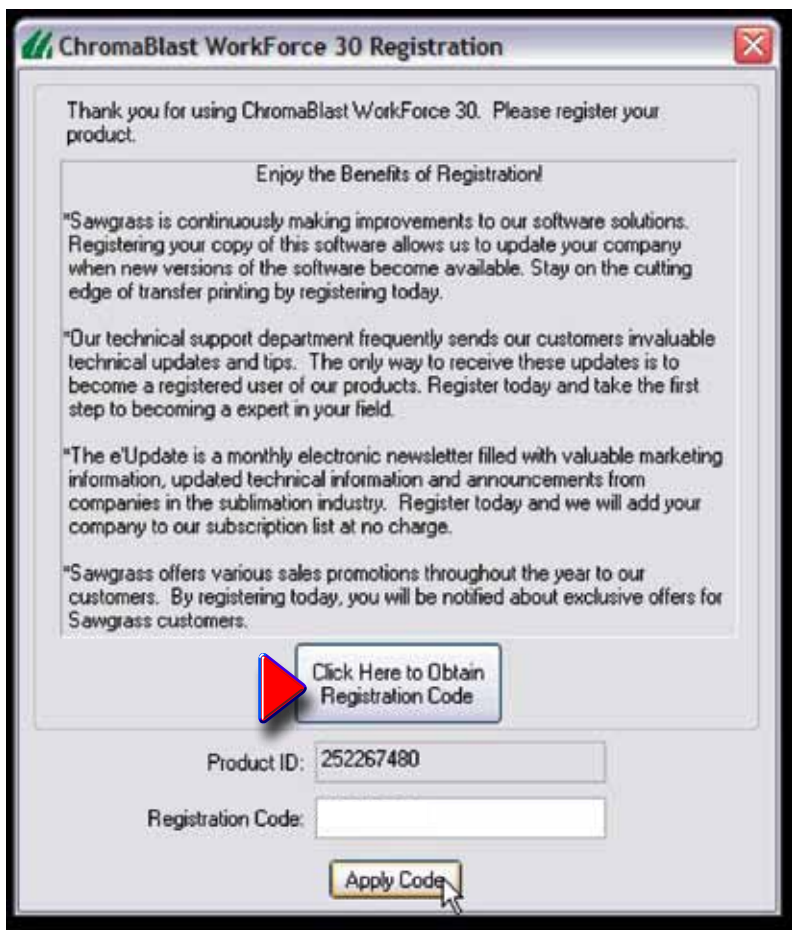


Figure 10

11. The **Product Registration Web Page** now opens. Complete the requested information on the web page and click **Continue**.

Figure 11

12. Once the website registration information has been completed, a **“Thank You”** message will appear.



Figure 12

13. After the online registration process is complete, apply the “**Registration Code**” you’ve received in the box labelled “**Registration Code**”, then click “**Apply Code**”.



Figure 13

14. Your driver is now registered. **Installation** begins when you click “**OK**”.



Figure 14



NOTE: In order to use **ChromaBlast Driver** as your **Color Management Software**, the color management features in either **Corel®** or **Adobe® Programs** must be **disabled**. Please see the instructions in **Appendix (Page 20)**, or click on the **“Show Me How” Button** on the **“Color Management Check” Screen** shown in **Item 12** below.

15. The **Color Management Check** screen will appear. Click the **“Continue”** Button on the left side of the screen after you have disabled the **Color Management** feature of the **Corel** or **Adobe** Graphic software. Click **“Show Me How”** if you need instructions on how to accomplish this.

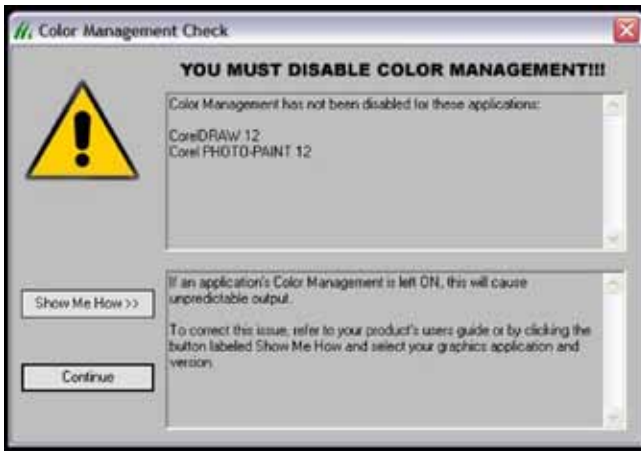


Figure 15

16. With this Screen, **Installation** of the **ChromaBlast Driver** will begin. The installation will continue for some time, depending on the characteristics of your hardware. Click **“Close”** to continue.

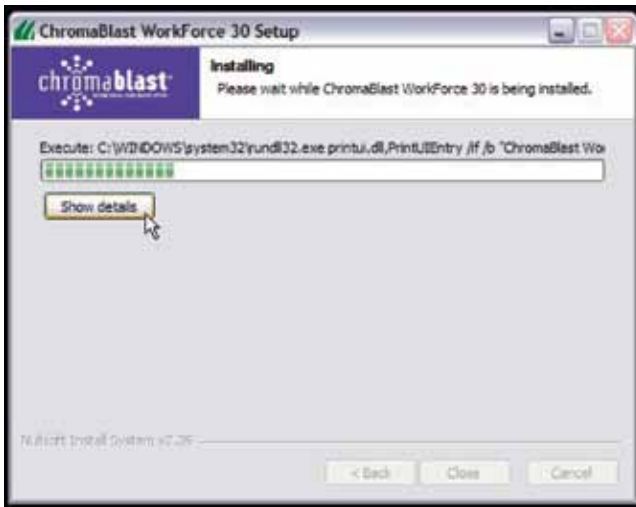


Figure 16

17. “ChromaBlast Driver” Installation is done. Click “Close” to continue.

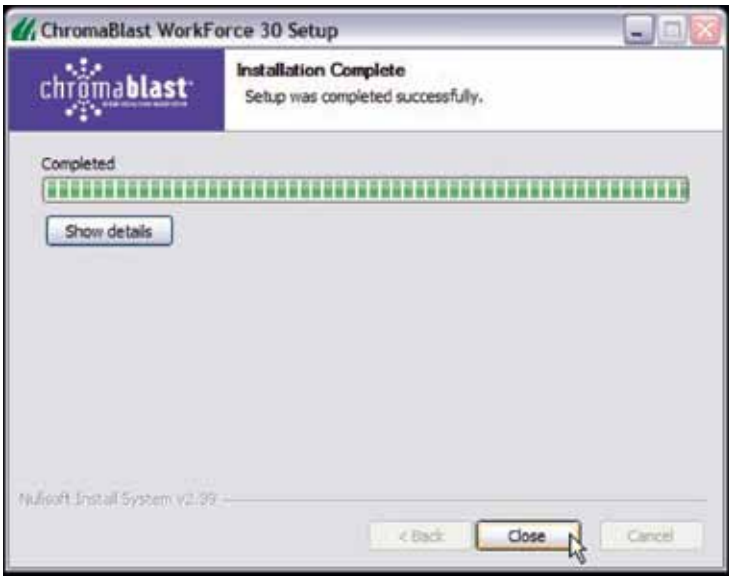


Figure 17

Using the ChromaBlast Driver for the WF 30/T30/B40W

ChromaBlast WF 30/T30/B40W is simple to use. Whenever you have **ChromaBlast** inks in your printer, you should print using the **ChromaBlast Driver** for the **WF 30/T30/B40W**. Do not print to your **Epson** printer with the **Epson Printer Driver**; printing with the **Epson Driver** will not give you the benefit of color management.

Quick Start Example (Corel Draw)

- 1) **Open/Create** an image in **Corel Draw**. Select **“Print”** from the **File Menu**.



Figure 1



Note: Please see **“Group 2 - Color Options”** on page **40** for more in-depth information on color options available within the **ChromaBlast WF 30/T30/B40W Driver**.

- 2) Select the **ChromaBlast WF 30/T30/B40W Driver**. Use the **“Properties” Button** (Fig. 2) to access **“ChromaBlast WF 30/T30/B40W Driver Properties”**. (Fig. 3, Page 31)

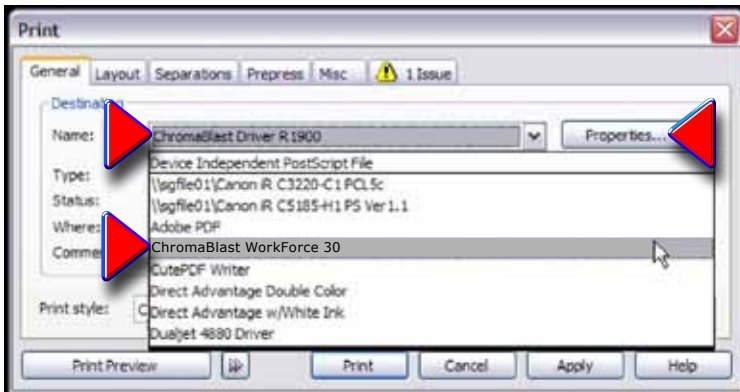


Figure 2

- 3) In **Figure 3**, you must set preferences according to the printing you require, either **“Photographic”**, **“Graphics”**, or **“No Color Management”**. You need also choose **Paper Size**, **Number of Copies**, **“High Speed”** or **“High Quality”**, **“Mirror”** or not, and **“ColorSure”** involvement, if any. Once this is done, click **“OK”** to return to the **“Print” Window (Fig. 2)**. Here, click on **“Apply”**, and then **“Print”**.



Figure 3

Setting ChromaBlast WF 30/T30/B40W Document Properties /Printing Preferences

To properly configure the **ChromaBlast Driver** for the **WF 30/T30/B40W**, you must display its **Document Properties/Printing Preferences**. There are two ways to display the **Document Properties/Printing Preferences**:

From the Windows Desktop:

1. Click on **Start > Printers and Faxes**.

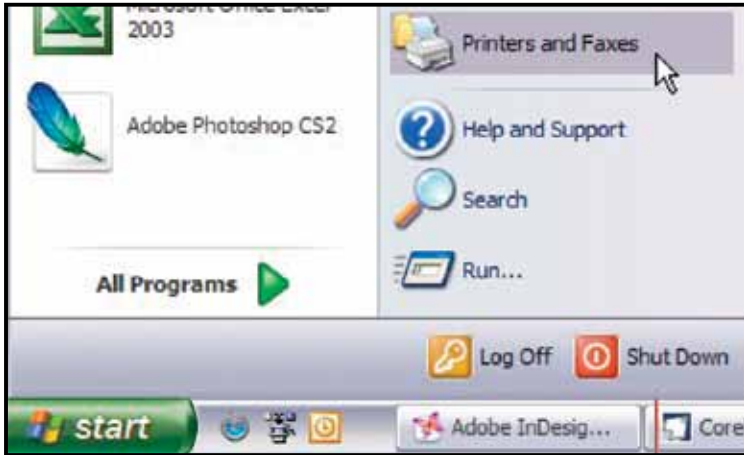


Figure 1

2. Right-click on your **ChromaBlast WF 30 Printer**. (Point 1) Scroll the Drop-Down Menu and click on **“Properties”**. (Point 2) This leads to the **ChromaBlast WF 30/T30/B40W Driver Properties Window**. (Fig. 3, Page 33)



Figure 2

3. In the “**ChromaBlast WF 30 Properties**” Window, click on the “**Printing Preferences**” Button near the bottom of the screen in **Fig. 3**.

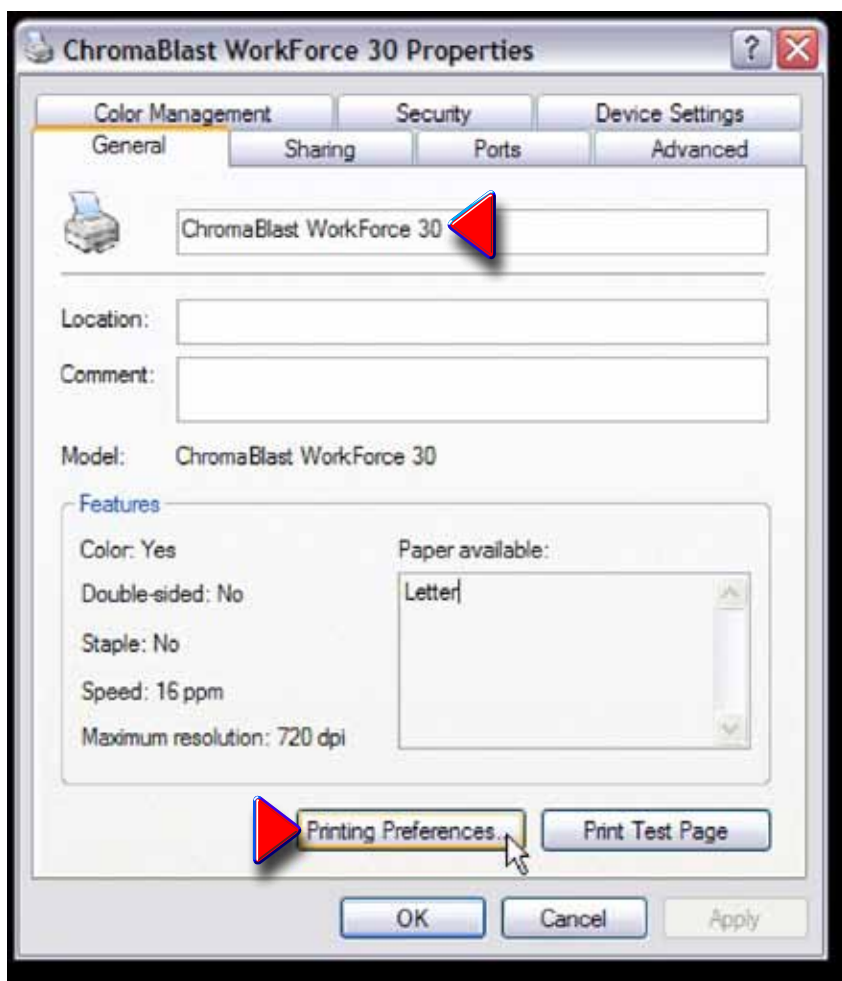


Figure 3

4. In **Figure 4**, you must set preferences according to the printing you require, either **“Photographic”**, **“Graphics”**, or **“No Color Management”**. You need also choose **Paper Size**, **Number of Copies**, **“High Speed”** or **“High Quality”**, **“Mirror”** or not, and **“ColorSure”** Involvement, if any. Once this is done, click on **“Apply”**, then click **“OK”** to return to the **“Properties” Window (Fig. 3, Page 35)**. Once again, click on **“Apply”**, then click **“OK”**, returning you to the **“Printers and Faxes” Window in Fig. 2**.

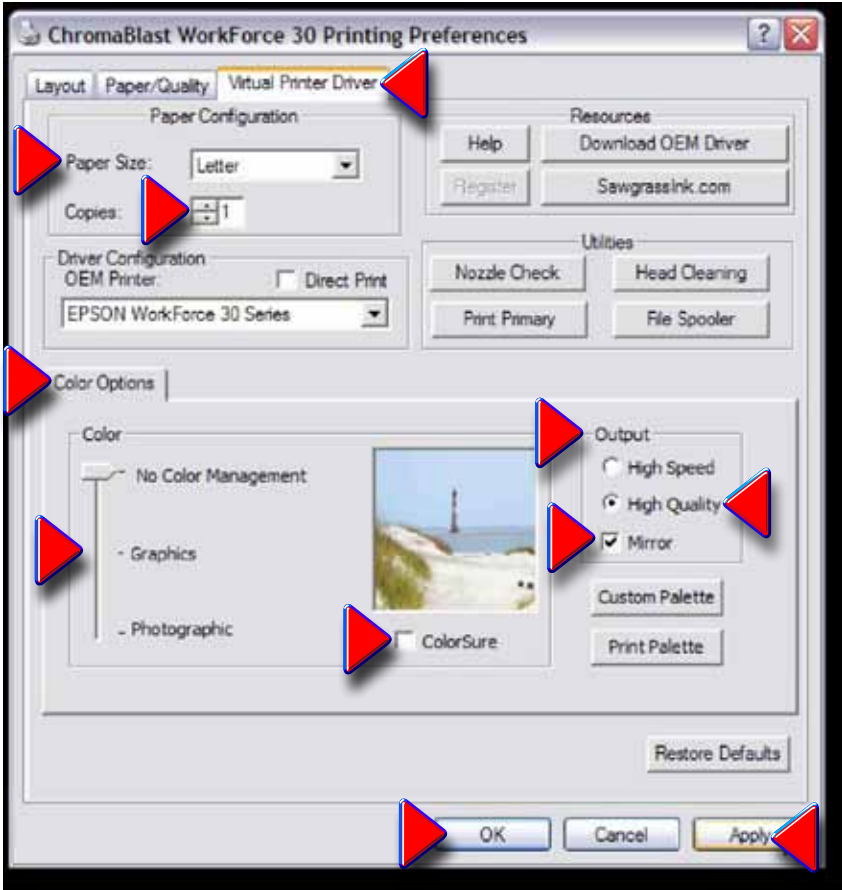


Figure 4

From an Application:

1. Select **File > Print Setup**. Click to reveal “**Print Setup**”. (Fig. 2)

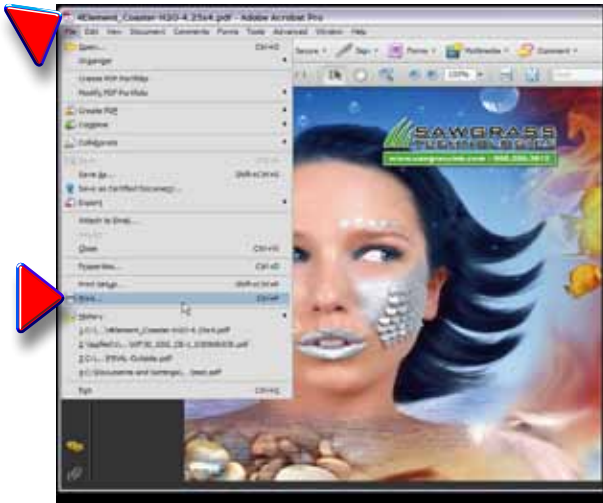


Figure 1

2. Choose the **ChromaBlast WF 30W Printer** from the list of printers. Click the **Properties Button** to access the **ChromaBlastWF 30 Document Properties**.

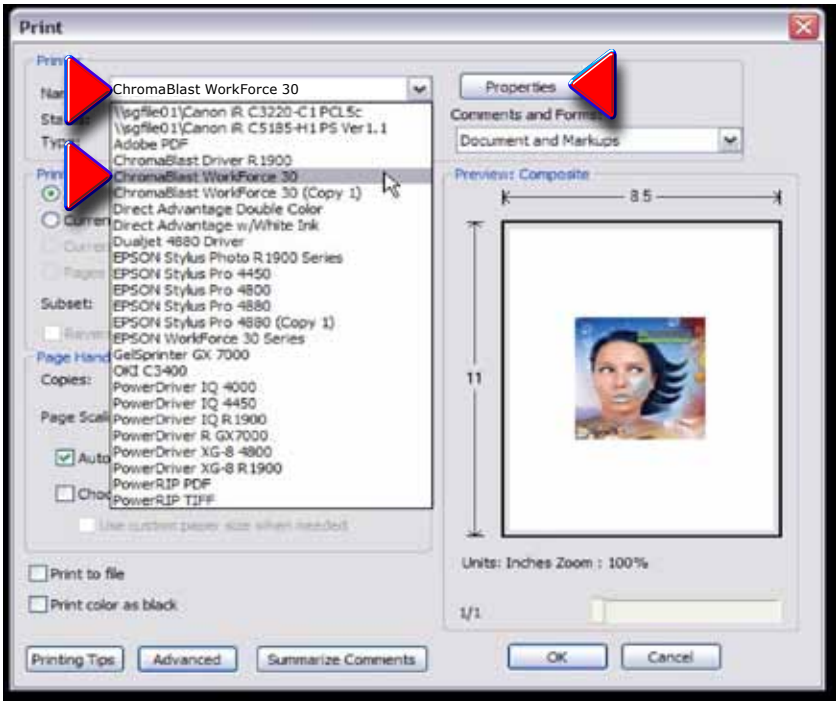


Figure 2

- 3) In **Figure 3**, you must set preferences according to the printing you require, either **“Photographic”**, **“Graphics”**, or **“No Color Management”**. You need also choose **Paper Size**, **Number of Copies**, **“High Speed”** or **“High Quality”**, **“Mirror”** or not, and **“ColorSure”** involvement, if any. Once this is done, click on **“Apply”**, then click **“OK”** to return to the **“Print”Window (Fig. 2)**. Here, click on **“OK”**, and then **“Print”**.

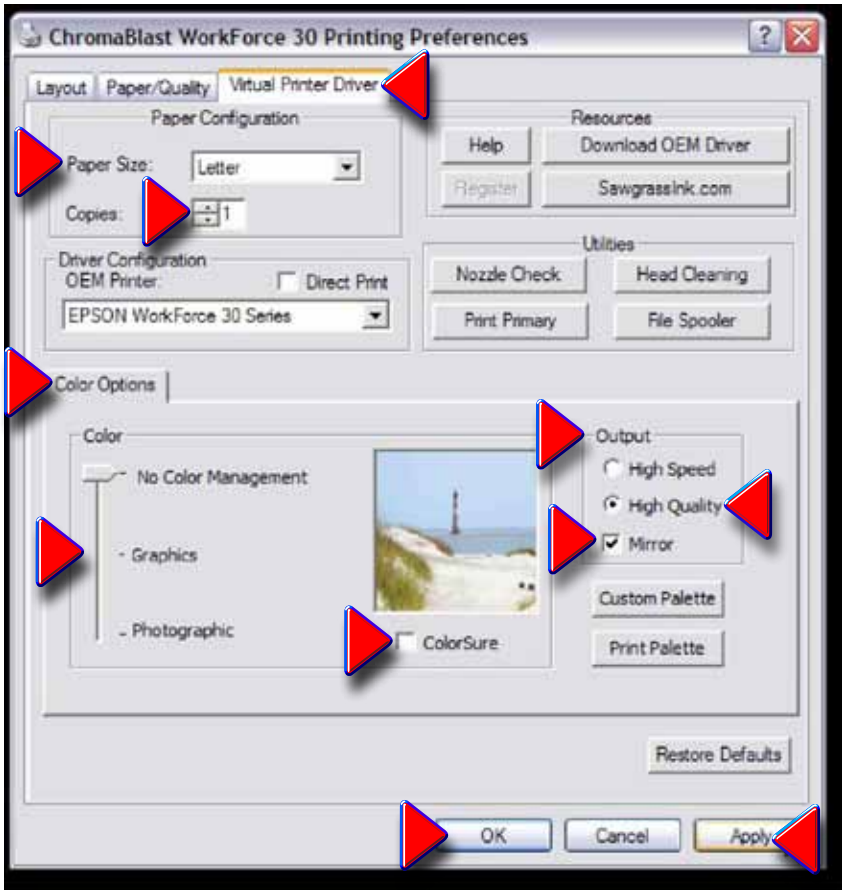


Figure 3

ChromaBlast Driver Properties

The **Figures** below show the **Document Properties/Printing Preferences** for a registered version of **ChromaBlast Driver**.

There are three main property groups. (See the color-coded boxes in the screen shot, **Fig. 1, Page 39.**):

- Group (1): Configuration** — Set Paper Size and Copy Count.
- Group (2): Color Settings** — Color Management Control Options.
- Group (3): Options** — Utilities for Printer Maintenance, Online Help, Product Registration, and Setting Input Profiles.

ChromaBlast Driver

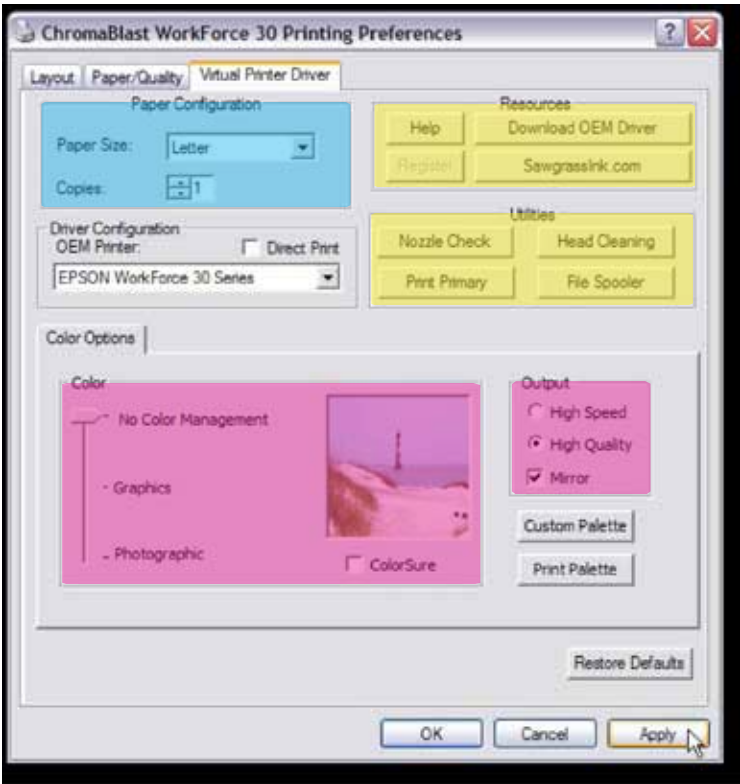


Figure 1

Group 1—Configuration: ChromaBlast Driver

Paper Size – From the drop down list, select the paper size you wish to use.

Copies – Sets the copy count for the number of prints to be made.

Group 2—Color Settings: ChromaBlast Driver

This tab gives you access to all of the color management controls available in **ChromaBlast Driver**. Color correction allows you to create transfers from all kinds of images, from photorealistic images to spot color logos.

Color Options

- **No Color Management** - All color management will be accomplished using the **Graphic Design Software**.
- **Graphics** - This setting is most suitable for reproducing life-like clipart.
- **Photographic** - This setting is most suitable for reproducing skin tones in scanned photographs.
- **ColorSure Checkbox - ColorSure*** is used to replace specific colors in your image with A spot color chosen from the **ColorSure Palette**. This resulting spot color enhancement is not affected by color setting. A **ColorSure** spot color will **ALWAYS** print the same.

*See **Appendix B** for an overview of **ColorSure**, **Page 48**.

ColorSure Options

- **Print Palette Button** – Prints the **ChromaBlast ColorSure Palette** for the selected substrate. **ColorSure** is a method for reproducing exact spot colors. The two main components are: **1) the Transferred Palette** and **2) the CoreIDraw, and Adobe Swatches**. For a complete description on how to use **ChromaBlast ColorSure** to get perfect spot colors, see **Appendix C**.
- **Custom Palette Button** – This button launches the **Custom Palette Utility**, which enables you to add, edit, import, and export custom colors to the **ColorSure Palette**. If you need to precisely match a specific color, the **Color Finder Tool** makes this a breeze. For a complete description on how to use the **Custom Palette**, see **Appendix C**.

Output Options

- **High Speed** – If the printer supports multiple resolutions, choose the most appropriate setting. For soft substrates, the High Speed option works well.
- **High Quality** – If the printer supports multiple resolutions, choose the most appropriate setting. For hard substrates, choose the High Quality option.
- **Mirror** – When you transfer an image, the result will be “flipped” when compared to the printed image. In order for your transfers to come out correctly, you must flip the image before transferring.

Group 3 – Printer Options: ChromaBlast Driver

- **Utilities** – Click this button to display a **Utilities Screen**. From the **Utilities Screen** you can print a **Nozzle Check** pattern, run a print head **Cleaning Cycle**, align the printer's **Print Head**, spool a **ChromaBlast Driver** print file to the printer, and print a page of primary ink colors.
- **Help** – This will display a help dialog box for an easy overview of the **ChromaBlast Driver™** driver functions and settings. Also contains a link to the **Sawgrass Technologies Website**.
- **Register** – If the **ChromaBlast Driver™** product has not been registered, click this button for instructions on how to register the product and unlock all the features.
- **Input Profile** – This option allows you to specify an input profile that the driver will use when color correcting your image. If you are printing scanned artwork and your scanner manufacturer provided **ICC** profiles for your scanner model, select the profile here. In order to select a profile **IT MUST BE INSTALLED ON YOUR MACHINE**. To install a profile on your machine, locate the profile on your machine using **Windows Explorer**. (**ChromaBlast Driver** supports both **ICC** and **ICM** Profile types). Right click on the profile file name and select “Install”.

Appendix A:

Over-Riding Design Software Color Management

The **ChromaBlast WorkForce 30** provides a complete color management solution for your **ChromaBlast Digital Transfer Inks** printing. It is extremely important that you turn off any color matching features associated with your design software. An explanation of how to disable print-time color management in several popular design packages follows:

CorelDRAW™ version X-4, X-3, 12, 11, and 10

- In **CorelDRAW**, open an existing, or create a new graphic.



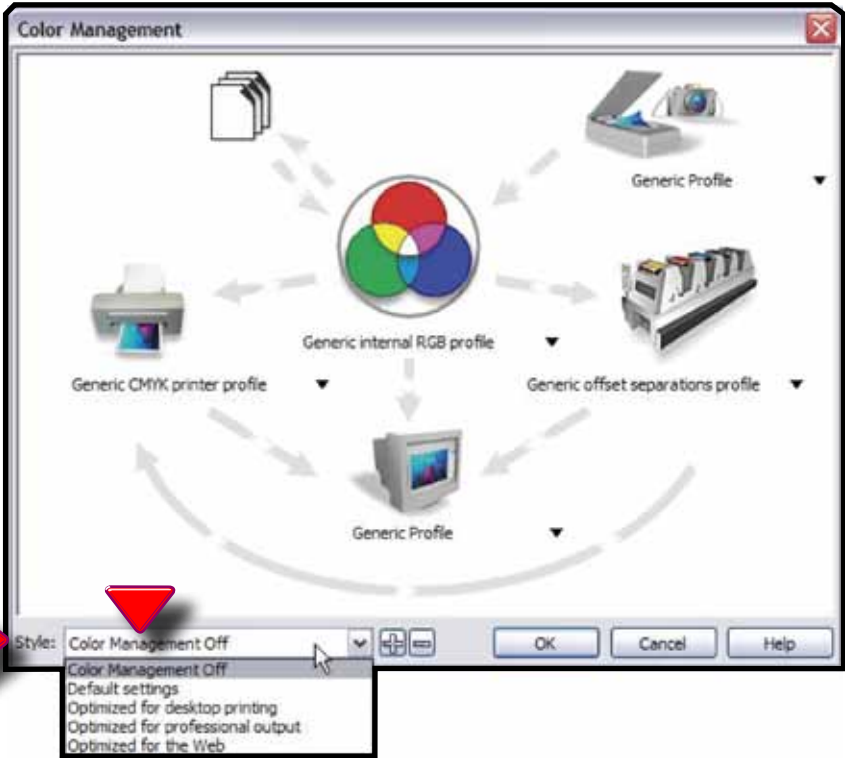
Figure 1

- From the **Main Menu** choose **Tools > Color Management**.



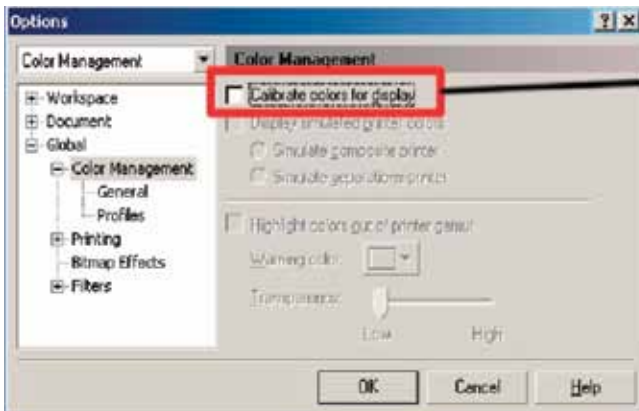
Figure 2

- In the **Color Management Window**, set the **Style** option to **Color Management Off**.



CorelDraw™ version 9

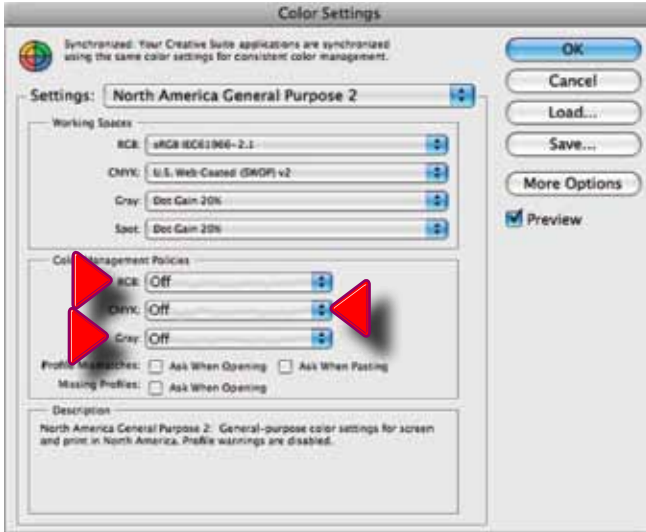
- Create a new graphic.
- From the **Main Menu** choose **Tools > Color Management**. The **Color Management Dialog Box** is displayed.
- In the **Color Management Window** (see figure below), **UNCHECK** the Calibrate colors for display box.



Must Be Unchecked

Adobe Photoshop CS3, CS2, CS, Photoshop 7 & 6: *Color Setup*

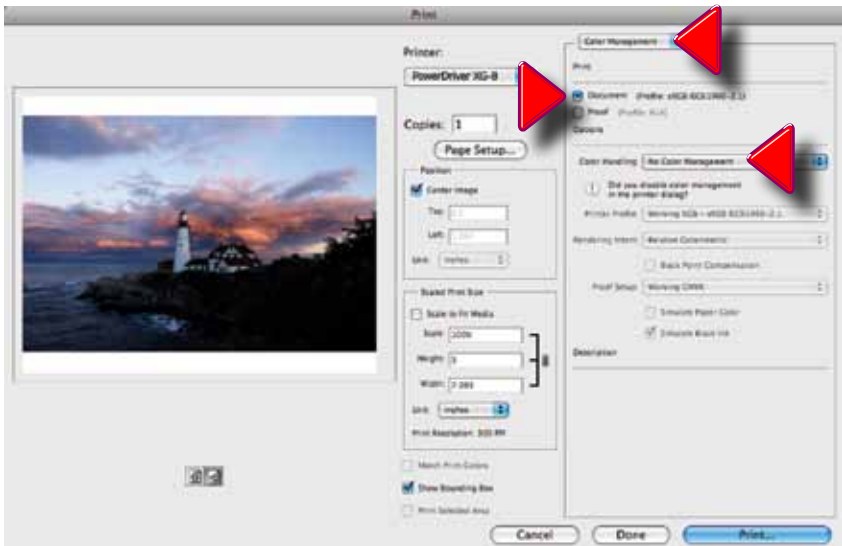
From the **Main Menu**, choose **Edit, > Color Settings**. In the **Color Settings Dialog Box**, turn all **Color Management Policies** to “Off”. (See below.) Mark the box “**Ask When Opening**” next to “**Profile Mismatches**”.



To Print; Adobe CS3:

Select **File, > Print**. On the print dialog page, set the options as follows:

- Upper Right Hand **Menu** to “**Color Management**”
- Choose “**Document**” by clicking the radio button.
- Under “**Color Handling**”, choose “**No Color Management**”



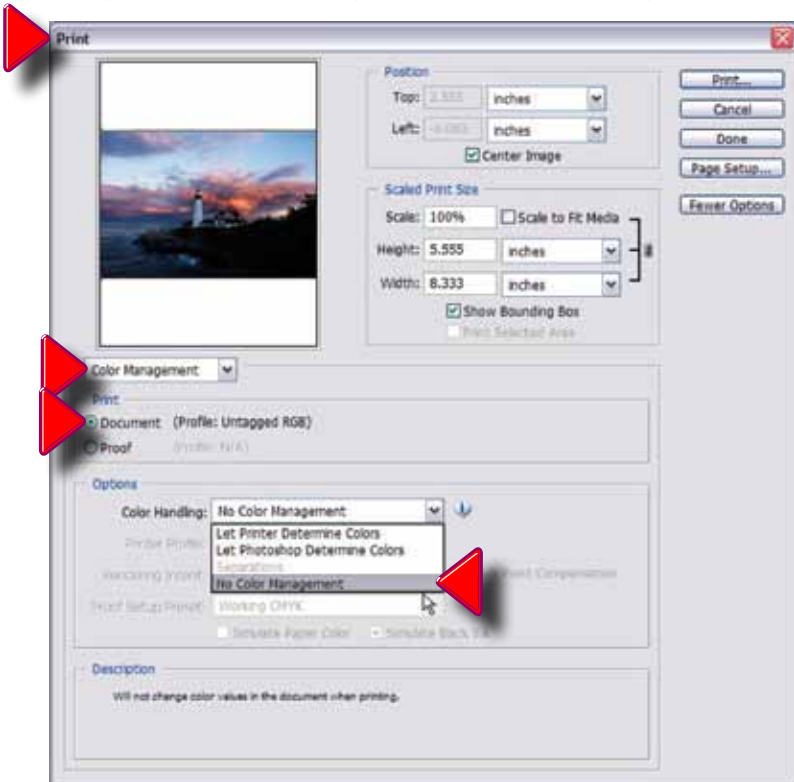
To Print; Adobe CS2,

Always select **File, > Print with Preview**. On the print dialog page, set the options as described in the following a thru d:

- a. Click on “**More Options**”.



- b. Choose **Color Management** in the drop-down menu.
- c. Choose “**Document**” by clicking the radio button.
- d. Under “**Options > Color Handling**” choose “**No Color Management**”.



To Print; CS and Photoshop 7:

Always select **File**, > **Print with Preview**. On the print dialog page, set the options as described in the following **a** thru **d**:

- a. Click on “**More Options**”.
- b. Choose **Color Management** in the drop-down menu.
- c. Choose “**Document**” by clicking the radio button.
- d. Choose **Same as Source** for **Print Space**.

From the **Color Management** drop option list, make sure that **Source** is set to “**Document**” and **Print Space** is set to “**Same As Source**”.



Adobe Photoshop Elements 5.0/4.0/3.0:

Select **Edit** and then **Color Settings** from the top drop down **Menu Bar**
Select **No Color Management**. Click **Ok**.



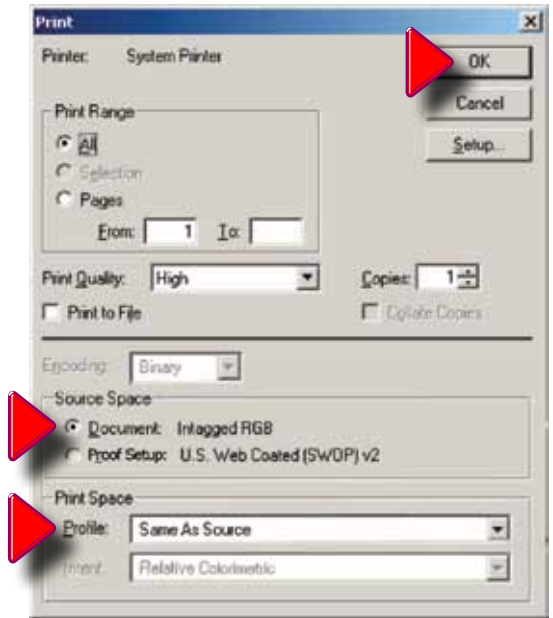
To Print RGB Graphics

Click **File**, > **Print**, then set the **Range**, **Print Quality**, & **Copies**.

Fill in radio button “**Document: Intagged RGB**”.

In “**Print Space**”, “**Profile**” should read: “**Same As Source**”.

Press “**OK**”.



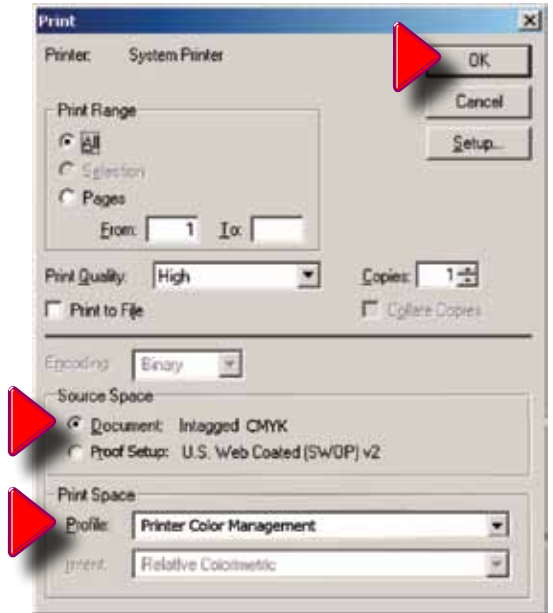
To Print CMYK Graphics

Click **File**, > **Print**, then set the **Range**, **Print Quality**, & **Copies**.

Fill in radio button “**Document: Intagged CMYK**”.

In “**Print Space**”, “**Profile**” should read: “**Printer Color Management**”.

Press “**OK**”.



Appendix B:

Using ChromaBlast ColorSure™ and Custom Palette

I. Introduction

ColorSure is a method for reproducing exact spot colors. There are four main components of the **ColorSure System**: **1) the Transferred Palette**; **2) Color Finder**; **3) Custom Palette**; and **4) the CoreIDRAW and Adobe** application palettes / swatches.

- 1. ColorSure Palette:** This is your main color palette that includes a wide variety of commonly used colors.
- 2. Color Finder:** If a color you need is not on the **ColorSure Palette**, the **Color Finder Tool** allows you to locate the exact custom color you are looking for.
- 3. Custom Palette:** With the **Custom Palette** feature, you can add new custom colors to the existing **ColorSure Palette** mentioned in **Step 1**.
- 4. Application Palettes:** You can add your **Color Finder** colors to an existing application palette, or you can add multiple custom colors to new, custom palette files (*.cpl, *.acl, etc.).

II. Printing the ColorSure Palette



The first step: Print and transfer your **ColorSure Palette** to the various substrates you will be using. Most likely you will have customers who desire precise colors. Having your **ColorSure** palette available allows the customer to choose the color from the palette that is the closest match to what they want, and this gives you a starting point for finding the exact custom color that will match your customer's needs.

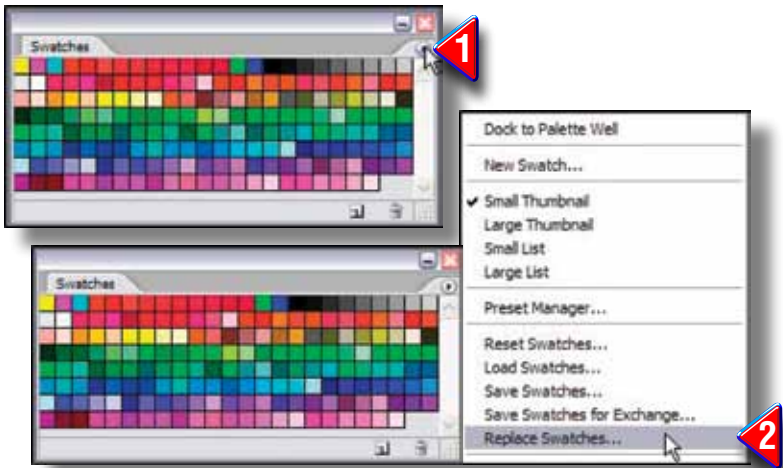
To print the ColorSure palette, follow the steps below:

- Click 'Start' and navigate to the 'Printers and Faxes' folder. Right-click on your **ChromaBlast WorkForce 30** icon and select 'Printing Preferences' from the menu. You may also open **ChromaBlast WorkForce 30** from within an **Adobe** or **Corel** program by going to **File, Print**, and choosing the **ChromaBlast WorkForce 30** printer from the pull-down menu. Click "Properties" to open **ChromaBlast WorkForce 30**. Select the **ChromaBlast WorkForce 30 Tab**.
- Choose the paper size you will be printing the palette to (**Letter, Legal, etc**).
- Select the speed / resolution of the palette – **High Speed** or **High Quality**.
- Be sure to check the box to mirror your print, click 'Print Palette,' and then transfer the palette to the previously selected material.
- You now have a visual representation of how the **ColorSure Palette** colors will appear on that particular texture, tone, and weave of material.

III. Designing Your Artwork

By picking colors from the ColorSure palette, you will be able to consistently reproduce colors in a reliable manner. To assist you in designing your artwork, ChromaBlast ColorSure & ChromaBlast WorkForce 30 installs three palettes: two for Adobe products and one for Corel products. These colors match the palette that is printed from within ChromaBlast ColorSure and the ChromaBlast WorkForce 30.

- To open the **ColorSure Palette** in **Corel 9, 10, 11, 12, X3, and X4**, choose **Window > Color Palettes > Open Palette**. Select the file “**ColorSure PaletteCorel.cpl**”
- To open the **ColorSure Palette** in **Adobe Illustrator**, (**Colorsure Palette.aco**) choose **Window > Swatch > Libraries > Other Library**. Navigate to its **Installation Destination** set during **WorkForce 30** installation: **C:\Program Files\Sawgrass\WorkForce 30\Adobe Illustrator** and hit **Open**. For easier access to the **Palette File**, copy it from this installation path to **Illustrator10\Presets\Swatches** and it will show up in your **Drop-down** list directly under the **Swatch Libraries Menu**. Other versions of **Illustrator** will have similar steps.
- To open the **ColorSure Palette** in **Adobe PhotoShop**, (**Colorsure Palette.aco**) choose the “**Swatches Palette**”, click the option arrow on the palette, (**Point 1**), choose **Replace Swatches**, (**Point 2**), and pick the “**Colorsure Palette.aco** file.



HINT

After you have the **ColorSure Palette** loaded into **CorelDraw**, move the cursor over each color. As the cursor hovers over each different color, the **ColorSure Name** is displayed in the status area below each color.

IV. Using Color Finder

After printing and transferring the **ColorSure Palette**, you see that you have an array of colors to work with. There will be times, however, when the color you need is not included in the **ColorSure Palette**. This is where the **Color Finder Tool** comes in handy. The **Color Finder Tool** allows you to start with a specific color (e.g. navy blue) and find similar colors in the same family by adding and subtracting up to three colors called

‘Step Colors.’ For example, starting with navy blue with a **CMYK** value of **60,60,0,40** and choosing two step colors (e.g. cyan and magenta) would expand the original navy blue in four directions (more cyan, less cyan, more magenta, and less magenta). This expanded color chart – specific to a particular substrate and printing speed – is outputted directly to your printer.

How to use Color Finder:

- Open the **ChromaBlast WorkForce 30 Window** as instructed in **“Printing the ColorSure Palette”** outlined in **Section II**.
- At the bottom of the window, click the **Custom Palette Button**; this will open the **“Custom Palette Utility” Window**. (**Figure 1**)
- First, make sure you select your desired **Substrate**, **Output (High Speed or High Quality)**, and the **Mirror** option from the **Printing Preferences Window**. Click **Apply** at the bottom of the window. This is a very important step as it will affect the final printed output. (**Figure 2**)
- Click on **Color Chooser** and select your desired starting color from the matrix. If you do not wish to use **Color Chooser**, you have the option to manually enter the **Start Color** values in the **CMYK** boxes. (**Figure 3, page 51.**)

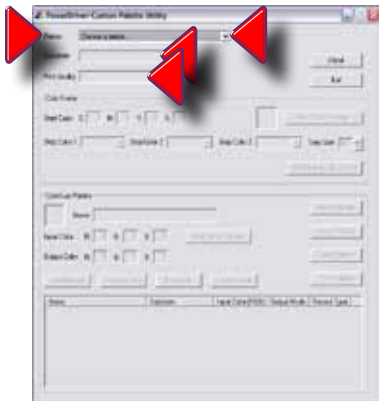


Figure 1

- To use **Color Chooser**, simply click on the **‘Start Color Chooser’** button in the **“Color Finder” Section**, at the top right of the **“ChromaBlast Custom Palette Utility” Window**. You can then choose a color from the basic color selection, or you can click on the **Color** button at the right of the window. This will display a color matrix. To define a custom color, click anywhere in the matrix. Use the slider at the right of the matrix to adjust luminosity. Clicking **‘OK’** will automatically fill the **RGB** boxes with the corresponding values. (**Fig. 3**)
- For advanced users, **RGB** values can be determined by printing out a **Custom Palette**, which is outlined in the next section.

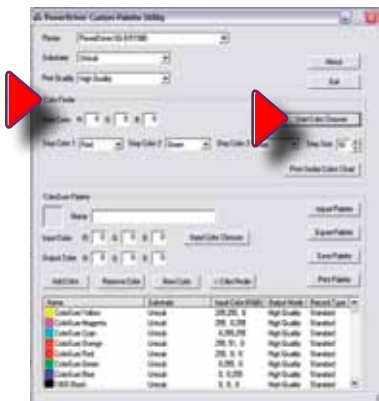


Figure 2

Color Chooser Dialog Window

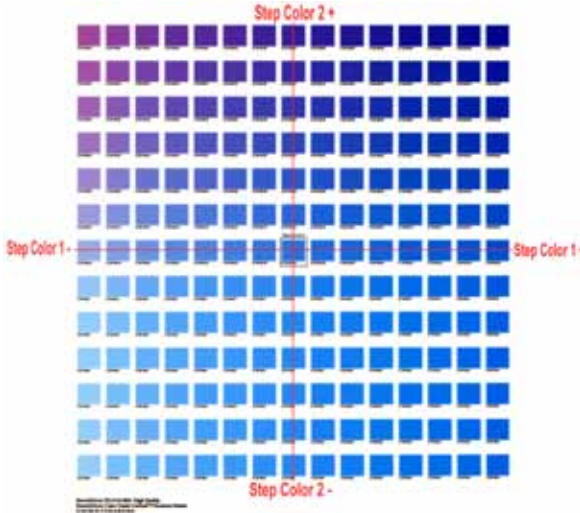


Figure 3

Custom Palette Utility

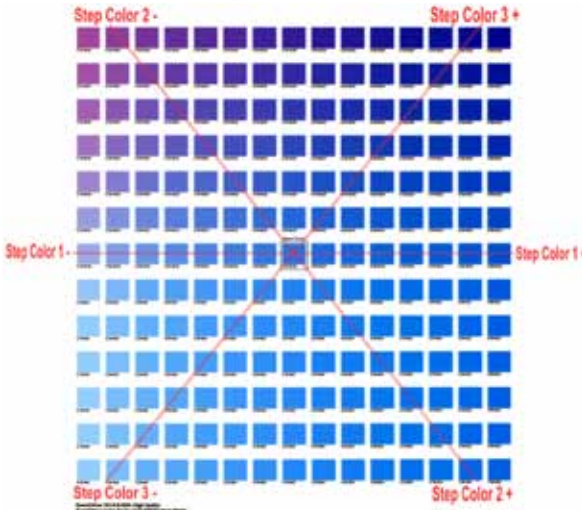
You may alter the chosen color's **CMYK** value by selecting two or three **Step Colors**. Using multiple step colors will present you with a greater range and variety of colors to choose from.

- For instance, if you choose to modify your **Start Color** with two steps, then **Step Color 1** will change its values on the **X** (horizontal) axis and **Step Color 2** will change its values on the **Y** (vertical) axis.



Color Finder Palette with two Step Colors

- If you modify your **Start Color** with three steps, **Step Color 1** will remain the same. However **Step Color 2** and **Step Color 3** will form an imaginary 'X' and their values will change on opposing diagonal **Y** axes.



Color Finder Palette with three Step Colors

- Next, determine what **Step Size** you want to apply to the **Color Finder Palette**. This is simply a question of how much you want your **Start Color** to fluctuate.
- If your **Start Color** is close the color you are looking for, use a low **Step Size** (i.e. 5-10). However, if your start color is not close to what you are looking for, use a higher **Step Size**.
- You can enter any **Step Size** value between **1** and **40**.
- As an example, let's say your **Start Color** is **C:20, M:100, Y:150, K:0** and you select **Cyan** and **Magenta** to be your **Step Colors**. You also enter a **Step Size** of **10**. When the '**Print Colors**' **Button** is clicked, your **Start Color** will be in the middle of the **Color Finder Palette** and from there each color will vary the **Cyan** and **Magenta** values by **10**.
- When you are finished selecting the **Start Color**, **Step Colors**, and the **Step Size**, click on the **Print Colors Button**. This will print your custom **Color Finder Palette** directly to your printer.
- After printing the **Color Finder Palette**, transfer it to your selected substrate and then try to match your desired color to one that is on the palette. If you find a suitable match, you are finished using the **Color Finder Tool**. Move on to **Section V. "The Custom Palette"**.
- If you couldn't find an accurate match on the first printed **Color Finder Palette**, don't worry. Follow the easy steps below, and you can find a more suitable custom color.

To Find More Custom Colors

1. First, try to locate a new **Start Color** from the palette is closer than the original color.
2. Next, after finding a more suitable **Start Color**, write down that color's **CMYK** value. Here is how to obtain this value. There are numbers under each color that are dependant upon which **Step Colors** you chose. For example, it might say **C:70 M:120**. Take note of these values. Then, at the bottom left of the **Color Finder Palette** you will see a full set of **CMYK** values. The new **Start Color's CMYK** value would be **C:70, M:120** and whatever the **Y&K** values are from the full set.
3. Lastly, plug the **CMYK** values for the new **Start Color** into the boxes in **Color Finder**, choose your **Step Size**, and click on **Print Colors** once again. Continue with steps **1-3** until you find your desired color.

V. The ChromaBlast Custom Palette

Let us assume that you have found the exact color you need using the **Color Finder Tool**. What you will want to do next is apply these custom color values to either an existing palette, or to create a new custom palette altogether. This allows you access to this color again should the same job arise.

How to use Custom Palette:

- First, you need to assign the **CMYK** values of the matched color from the **Color Finder Palette** to the **Output Color CMYK** fields in the **Custom Palette** section.
 - Give your new custom color a descriptive **Name** in its designated field (e.g. **IBM Blue**).
 - Next, assign an “**RGB Input Color**” **Value**. There are two methods to establish this value.
1. If you have the original file, sample the color that was matched in your graphic design application with the eye dropper tool. This will give you the **RGB** value of that color. Input this value into the **RGB Input Color** fields of the **CustomPalette Section**.
 2. If you do not have the original file, or the artwork has not yet been designed, simply click on the ‘**Input Color Chooser**’ button, and then click on “**Define Custom Colors**”. From the color matrix, find a color that closely resembles the color that you are adding to the custom palette. At the bottom-right of the colormap window are the **RGB** values. Simply click ‘**OK**’ and the **RGB InputColor** values will be automatically entered. Please take note of these **RGB** values for later use in your design applications.
- Click the “**Add Color**” **Button**. A window will pop up asking you whether you want to add the color to the palette for all substrates, or just the current substrate. Click ‘**YES**’ here unless you have the same custom color saved on palettes for other substrates. Another window will then ask you if you want to save the custom color for all resolutions or just the current one. Click ‘**YES**’ here unless you have the same custom color saved on palettes for other resolutions.
 - Lastly, click the “**Save Palette**” **Button**. When finished, simply **Exit** out of the window.



The ‘**Import Palette**’ and ‘**Export Palette**’ **Buttons** are convenient to have in the event you need to transfer palettes to and from different computers.

VI. Adding Swatches to your ChromaBlast Application Palette:

It is possible to add your custom color(s) swatch to an application palette as well. You will need to take note of the **Input Color RGB** value that you assigned in the previous step in order to create the new swatch. Refer to your specific design application software’s manual for instructions on this.

Supplies & Equipment

Contact your authorized reseller to purchase sublimation supplies and equipment. For more information, see the **Dealer Directory** on our website at www.sawgrassink.com.

Operating Conditions

Certain environmental conditions should be taken into account for the operation of **ChromaBlast Inks**, including temperature and relative humidity.

ChromaBlast

- Supported operating Conditions are **65° – 80° F** with **5 – 60%** relative humidity
- Optimum operating Conditions are **70° – 75° F** with **40 – 50%** relative humidity

Storage

- Care should be taken to prevent storing **ChromaBlast** inks below freezing temperatures (**32°F, 0°C**). Do not expose these inks to extreme heat (temperatures in excess of **104°F, 40°C**). If these inks have been in storage, you should allow them to reach room temperature before using them.
- Do not expose **ChromaBlast** cartridges directly to light, especially sunlight, for extended periods.
- For best results, install your **ChromaBlast** cartridges by the date on the cartridge. Please refer to the individual ink bag/cartridge for the specific ink expiration date.

Storage Instructions

Store **ChromaBlast Media** in a cool, dry area within the provided plastic storage bag. Do not remove from carton until ready to use.

Troubleshooting

The troubleshooting tips found in this section relate mainly to problems that can be seen in transferred **ChromaBlast** images. If you are having problems related to the performance of your printer, please refer to the **Problem Solving** section found in the **Epson Stylus Photo Printer Quick Reference Guide**.

The colors in my transferred image are incorrect.

- The image may need color adjustment. Use the WorkForce 30 color matching software. For more information on how to use this software, please see the relevant **User Guide Sections** on **Color Management**.
- Ensure you used the right Printer WorkForce 30 and WorkForce 30 settings. Please see the relevant **User Guide Sections** related to **Software**.
- Ensure you pressed the item with the proper time, temperature, and pressure. For guidelines see the section entitled **ChromaBlast Transfer Instructions, Page 8**.
- Verify that all colors print correctly. Run the **Nozzle Check** utility and clean the print heads as required.

My printout is really light on paper.

- **ChromaBlast Ink** naturally looks muted before heat transference of the image. After transferring is complete, **ChromaBlast's** unique inks will produce a brilliant and durable final product.

My printout gets cut off on the bottom or side.

- Verify the **WorkForce 30 Printer** is setup for the correct paper size. Your **WorkForce 30 Printer** setting needs to match the paper size that is loaded in your printer.
- Ensure the right paper guide is in the proper position. When setting up the printer, slide the right paper guide to the left until it clicks into position.

My image looks good but it washes out.

- Ensure you pressed the garment with the proper time, temperature, and pressure. If so, try pressing longer to ensure that the dyes are penetrating the fibers sufficiently. For guidelines, see the section entitled **ChromaBlast Heat Transfer Instructions**.
- With **ChromaBlast**, ensure you used the recommended **ChromaBlast v1.5 Media and Inks**.
- Ensure your substrate is designed to accept sublimation transfers. Garments made from natural fibers, such as cotton, are not compatible with the sublimation process.

Colors are light and splotchy.

- Ensure you printed on the correct side of the paper or other media. With paper, the print side is the bright white side.
- Ensure you pressed the item with the proper time, temperature, and pressure. For guidelines, see the section entitled **ChromaBlast Transfer Instructions, Page 17**.

- Verify your printer WorkForce 30 settings are correct. Please see the relevant sections of the **User's Guide** for additional information.
- Ensure your substrate is designed to accept a **ChromaBlast** transfer. Garments made from natural fibers such as **Cotton** are compatible with the **ChromaBlast** sublimation process.

My image looks blurred.

- Ensure you pressed the item with the proper time, temperature, and pressure. For guidelines, see the section entitled **ChromaBlast Transfer Instructions, Page 17**.
- Ensure you printed on the correct side of the media. The print side is opposite the **LOGO** side of the media.
- Verify that the printer's print heads are properly aligned. For further instructions, see the **Epson WorkForce 30 Printer Quick Reference Guide**.

My image has gaps or bands present.

- Ensure that all of the printer's nozzles are firing properly. Perform a **Nozzle Check** from the **Utility Tab** of your printer WorkForce 30. For further instructions, see the **Epson WorkForce 30 Printer Quick Reference Guide**.
- If one or more of the nozzles fail to print, perform a **Print Head Cleaning**. For Further instructions, see the **Epson WorkForce 30 Printer Quick Reference Guide**.

Technical Support

If you are having difficulties achieving good results from your **ChromaBlast Inks**, you have several support options:

- 1. Telephone:** You may contact your authorized **ChromaBlast** reseller during their normal hours of operation for assistance. A full listing of authorized **ChromaBlast Resellers** is available on our **Web Site** at www.sawgrassink.com. In addition, you may also contact **Sawgrass Technical Support** at **(888) 253-1679** between the hours of **8:30 AM** and **5:30 PM Eastern Standard Time**.
- 2. Internet:** Visit the **Technical Support** area of the **Sawgrass Technologies, Inc.'s Web Site** at www.sawgrassink.com. The troubleshooting utility found here will provide you with solutions to some of the most common problems. You may submit a detailed description of your problem if you need further assistance.
- 3. E-mail:** You may e-mail **Sawgrass Technical Support** with a detailed description of your problem at support@sawgrassink.com.
- 4. Fax:** You may fax a detailed description of your problem to **Sawgrass Technical Support** at **(843) 849-3847**.

Notes:

