

Epson WorkForce 30

Setup and Print Guide: CoreIDRAW X5

NOTE: Before proceeding, please be sure you have the correct OEM driver and ChromaBlast WorkForce 30 installed. For assistance with driver installation, refer to the Getting Started Guide.

CoreIDRAW X5 Setup Guide

1.) Open a New Page in CoreIDRAW: (see FIGURE 1)

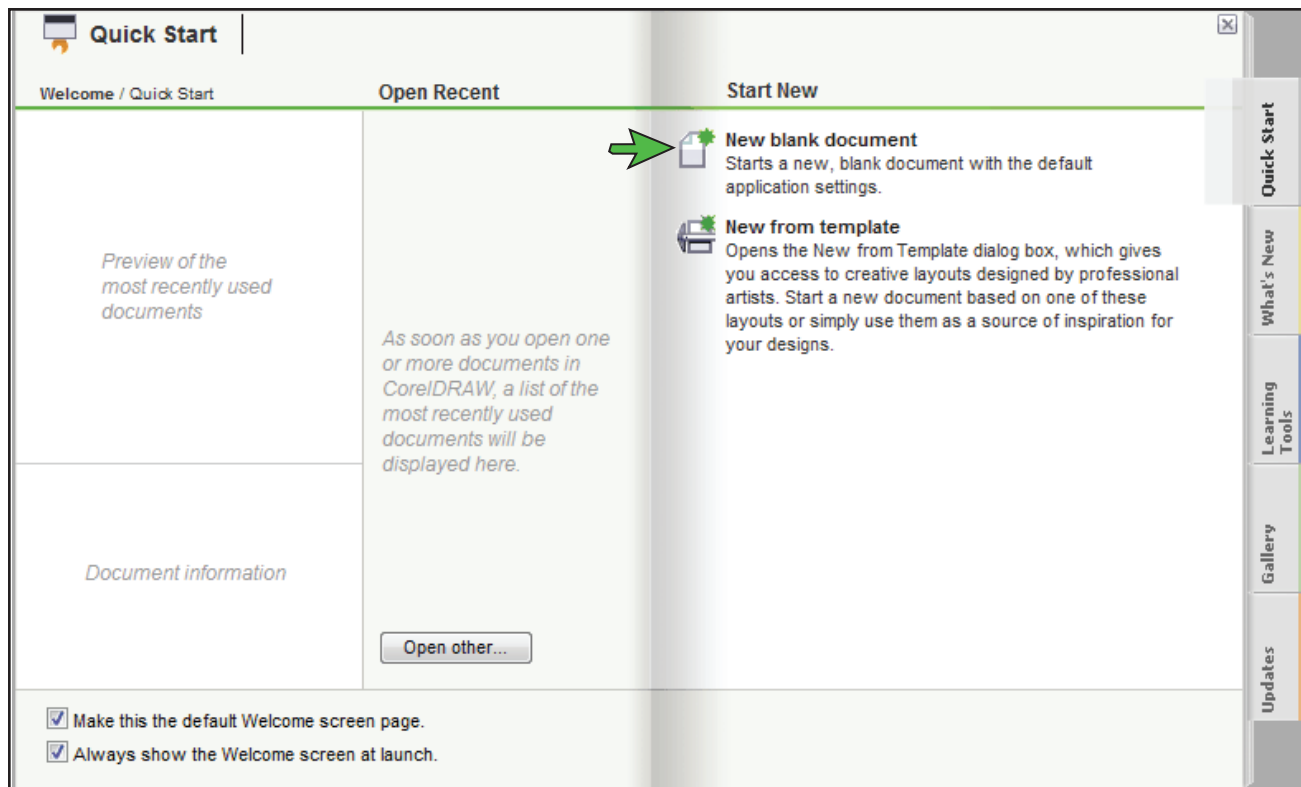


FIGURE 1

ChromaBlast: Epson WF30 Setup and Print Guide: CoreIDRAW X5 (cont'd 2:6)

2.) Configure a New Document Workspace: (see FIGURE 2)

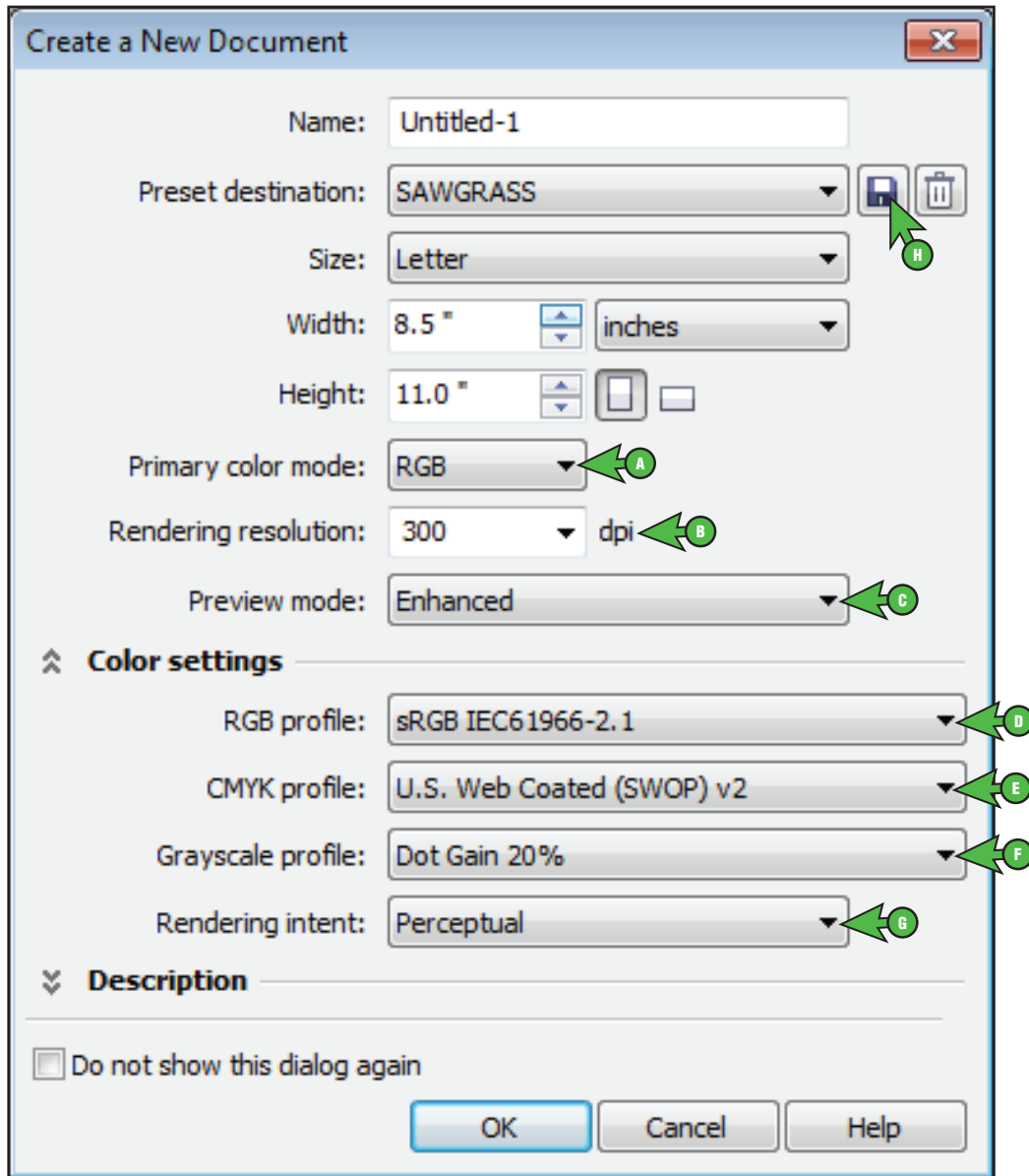


FIGURE 2

- A. Primary color mode: **RGB**
- B. Rendering resolution: **300**
- C. Preview mode: **Enhanced**
- D. RGB profile: **sRGB IEC61966-2.1**
- E. CMYK profile: **U.S. Web Coated (SWOP) v2**
- F. Grayscale profile: **Dot Gain 20%**
- G. Rendering intent: **Perceptual**
- H. Add Preset: **Name your new preset**

ChromaBlast: Epson WF30

Setup and Print Guide: CoreIDRAW X5 (cont'd 3:6)

3.) In the Menu Bar, click Tools > Color Management > Default Settings: (see FIGURE 3)

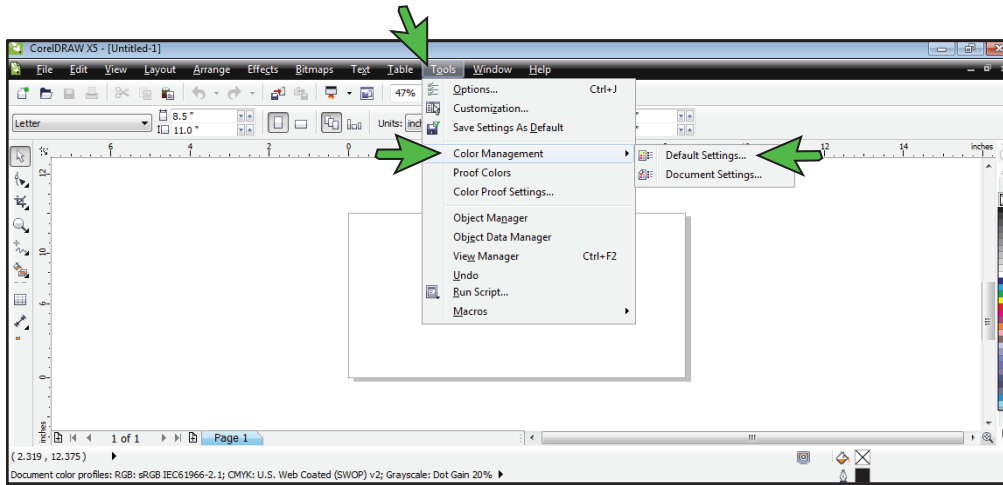


FIGURE 3

4.) The Default Color Management Settings window should now be open. Match your settings to the ones shown below: (see FIGURE 4)

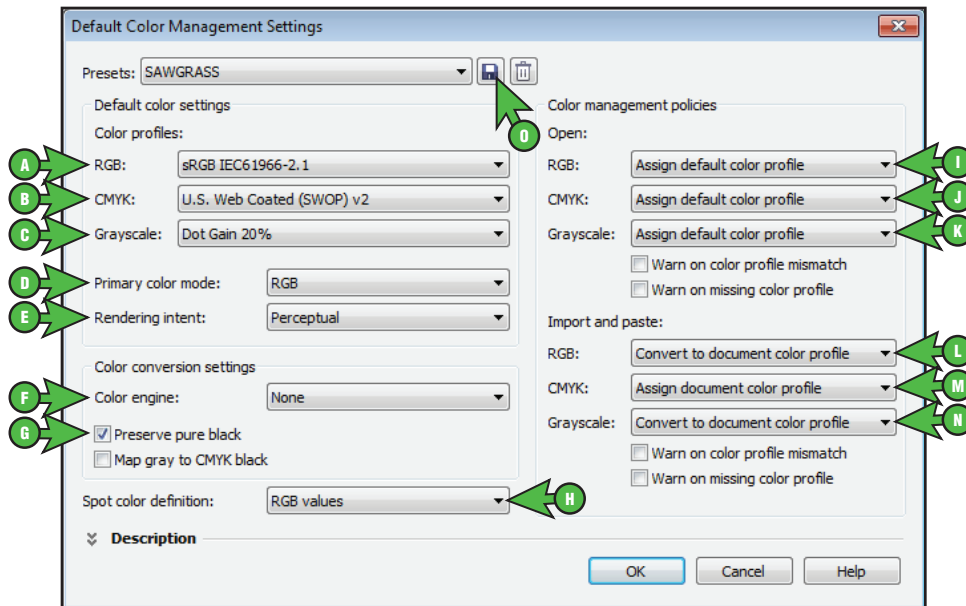


FIGURE 4

- | | |
|--|---|
| <ul style="list-style-type: none"> A. RGB: sRGB IEC61966-2.1 B. CMYK: U.S. Web Coated (SWOP) v2 C. Grayscale: Dot Gain 20% D. Primary color mode: RGB E. Rendering intent: Perceptual F. Color engine: None G. Check: Preserve pure black H. Spot color definition: RGB values | <ul style="list-style-type: none"> I. RGB: Assign default color profile J. CMYK: Assign default color profile K. Grayscale: Assign default color profile L. RGB: Convert to document color profile M. CMYK: Assign document color profile N. Grayscale: Convert to document color profile O. Add Preset: Name your new preset |
|--|---|

ChromaBlast: Epson WF30

Setup and Print Guide: CoreIDRAW X5 (cont'd 4:6)

5.) In the Menu Bar, click Tools > Color Management > Document Settings: (see FIGURE 5)

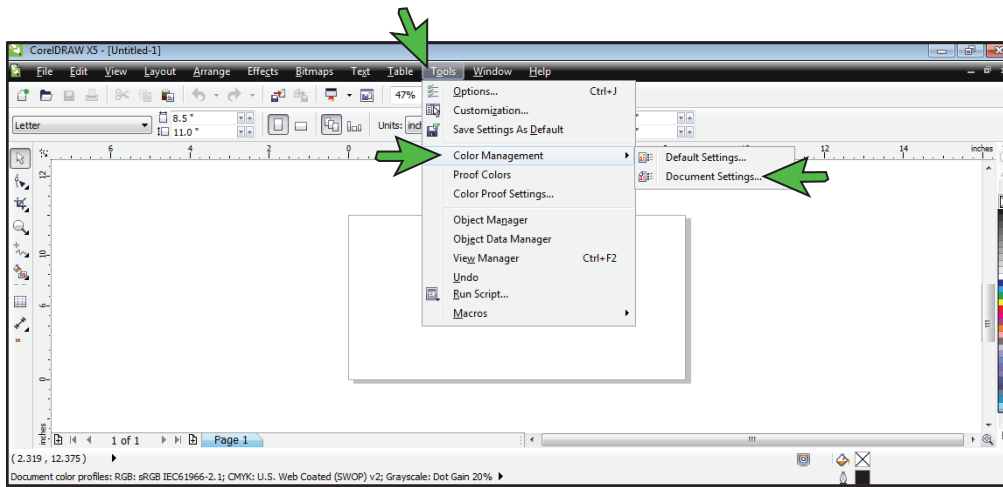


FIGURE 5

6.) The Document Color Settings window should now be open. Match your settings to the ones shown below: (see FIGURE 6)

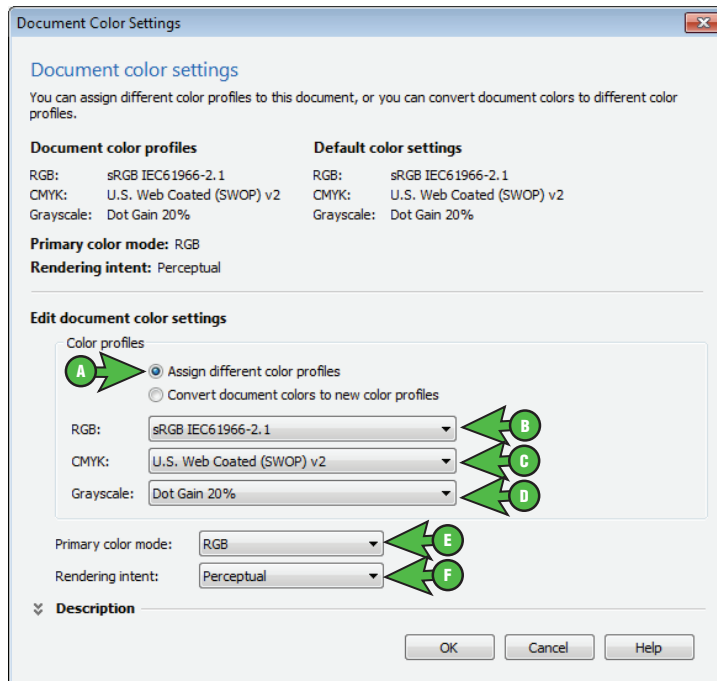


FIGURE 6

- A. Select the radio button: **Assign different color profiles**
- B. RGB: **sRGB IEC61966-2.1**
- C. CMYK: **U.S. Web Coated (SWOP) v2**
- D. Grayscale: **Dot Gain 20%**
- E. Primary color mode: **RGB**
- F. Rendering intent: **Perceptual**

ChromaBlast: Epson WF30

Setup and Print Guide: CoreIDRAW X5 (cont'd 5:6)

Printing from CoreIDRAW with ChromaBlast WorkForce 30

- 7.) Now that you have adjusted the Color Management settings, you are ready to print. Begin by opening an image in CoreIDRAW. In the Menu Bar, click File > Print (Ctrl + P). This will open the Print window. Match your settings to the ones shown below: (see FIGURE 7)

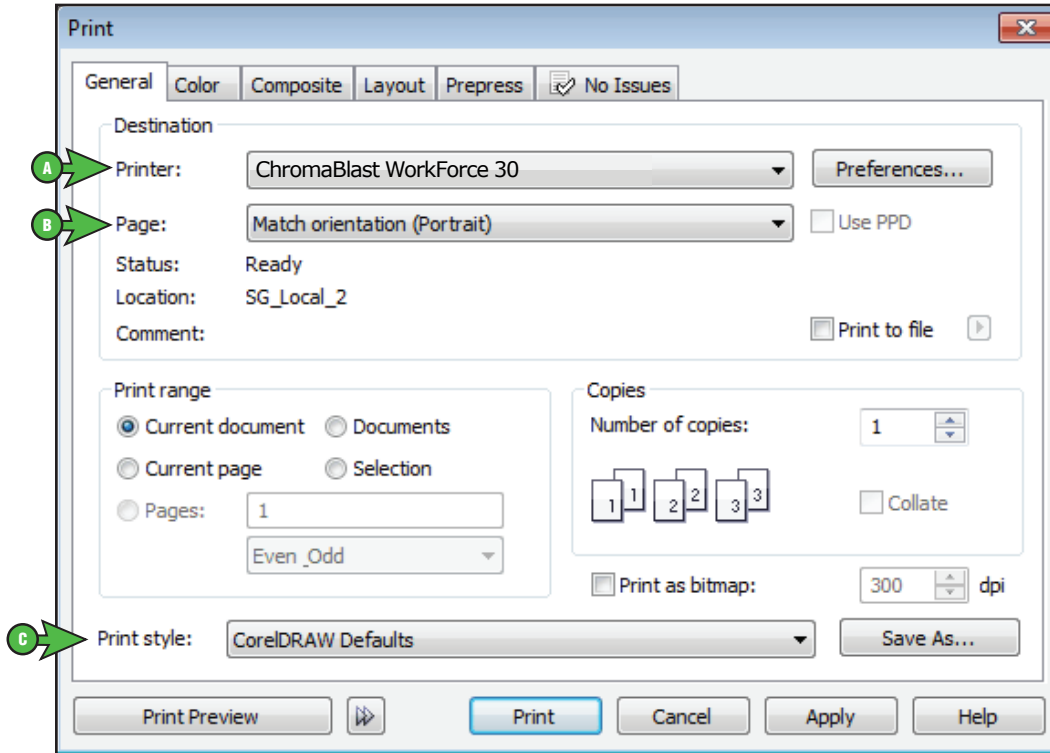


FIGURE 7

- A. Printer: **ChromaBlast WorkForce 30**
- B. Page: **Match orientation (Portrait)**
- C. Print style: **CoreIDRAW Defaults**

ChromaBlast WorkForce 30

ChromaBlast: Epson WF30 Setup and Print Guide: CoreIDRAW X5 (cont'd 6:6)

8.) In the Print window, click the Color tab and match your settings to the ones shown below: (see FIGURE 8)

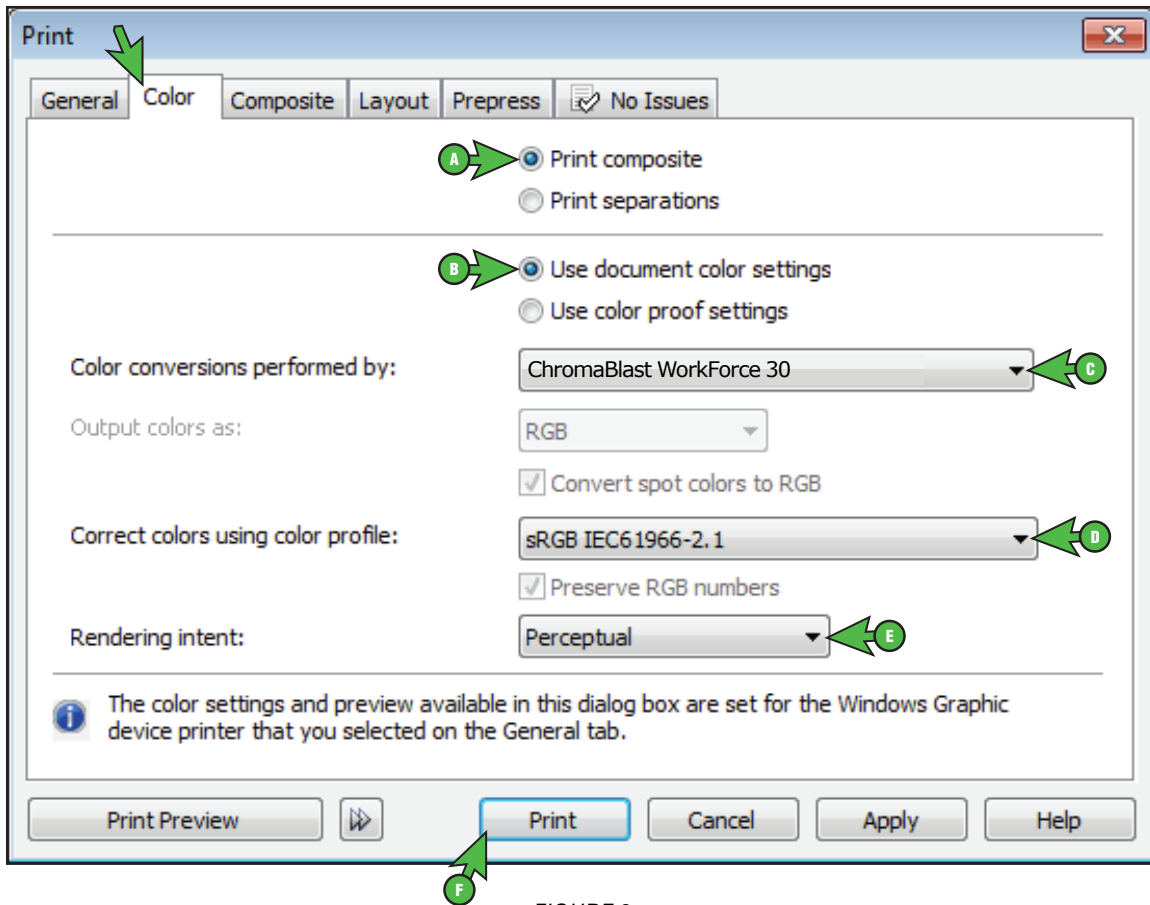


FIGURE 8

- A. Select the radio button: **Print composite**
- B. Select the radio button: **Use document color settings**
- C. Color conversions performed by: **ChromaBlast WorkForce 30**
- D. Correct colors using color profile: **sRGB IEC61966-2.1**
- E. Rendering intent: **Perceptual**
- F. Click **Print** when you are ready to print your image.

Congratulations! CoreIDRAW X5 Setup is now complete. Remember to select ChromaBlast WorkForce 30 each time you are ready to print.