

# Ricoh GXe3300N

## Setup and Print Guide: Photoshop 10, CS, CS2, CS3 & CS4

Before proceeding, please be sure you have the correct Ricoh OEM printer driver and ChromaBlast GXe3300N driver installed. For Assistance with driver installation, refer to the Installation Guide.

**NOTE:** Your screens and menus may differ depending on the version of software and operating system you are using. However, the settings will be the same.

### Photoshop Setup Guide

Begin by opening a **new/blank page** in Photoshop. At the top of the application click **Edit > Color Settings**. This will open the **Color Settings** window (see Figure 1).

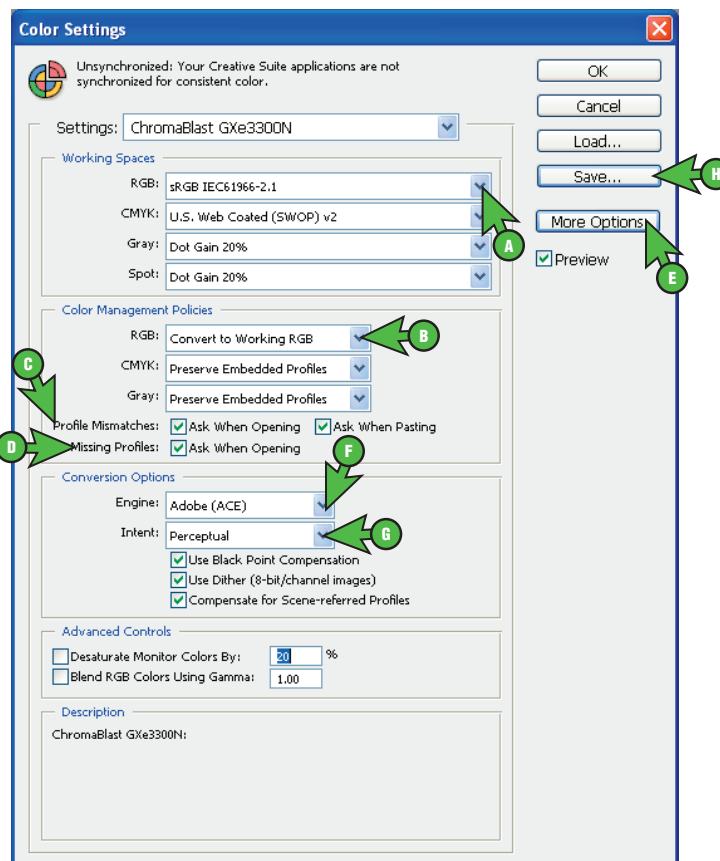


FIGURE 1

- 1.) Configure Color Settings: (see Figure 1)
  - a. **Working Spaces > RGB** > click the drop-down arrow and select **sRGB IEC61966-2.1** (see Figure 1 > A).

# ChromaBlast-R: Ricoh GXe3300N

## Setup and Print Guide: Photoshop 10, CS, CS2, CS3 & CS4 (continued... 2:3)

- b. **Color Management Policies > RGB** > click the drop-down arrow and select **Convert to Working RGB** (see Figure 1 > B).
- c. **Color Management Policies > Profile Mismatches** > check **Ask When Opening** and also check **Ask When Pasting** (see Figure 1 > C).
- d. **Color Management Policies > Missing Profiles** > check **Ask When Opening** (see Figure 1 > D).
- e. If **Conversion Options** is not visible, click **More Options** (see Figure 1 > E).
- f. **Conversion Options > Engine > Adobe (ACE)** (see Figure 1 > F).
- g. **Conversion Options > Intent > Perceptual** (see Figure 1 > G).
- h. Once your settings match, click **Save** (see Figure 1 > H). This will open the **Save** window (see Figure 2). Type **ChromaBlast GXe3300N** in the **File Name** field (see Figure 2 > A) and click **Save** when complete (see Figure 2 > B).

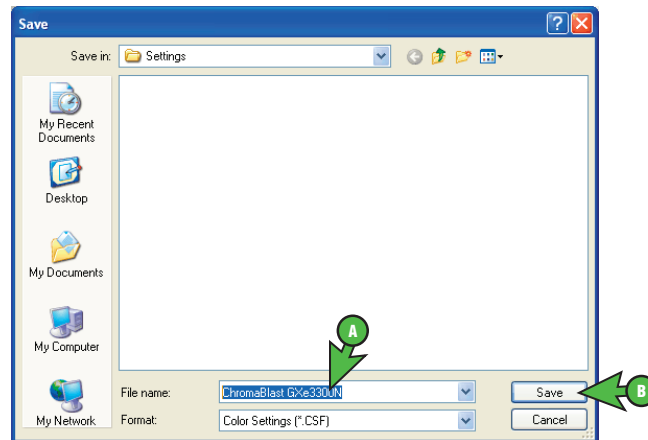


FIGURE 2

The Photoshop RGB Working Space is now set.

When opening images in Adobe Photoshop, you may encounter an **Embedded Profile Mismatch** warning (see Figure 3).

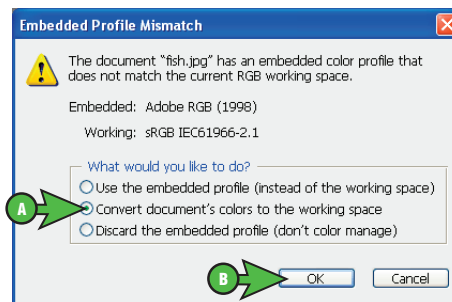


FIGURE 3

2. Convert to sRGB IEC61966-2.1: (see Figure 3)

- a. Select the radio button for **Convert document's colors to the working space** (see Figure 3 > A).
- b. Click **OK** to save changes and continue (see Figure 3 > B).

**NOTE:** Always choose to use or convert to sRGB IEC61966-2.1.

# ChromaBlast-R: Ricoh GXe3300N Setup and Print Guide: Photoshop 10, CS, CS2, CS3 & CS4 (continued... 3:3)

## Photoshop Print Guide

Begin by opening an image in Photoshop. At the top of the application, click **Image > Mode > RGB Color**. A check mark should be visible next to **RGB Color**. Next, click **File > Print**. This will open the **Print** window (see Figure 4).

**NOTE:** If you are using versions older than CS4, you will need to click **File > Print with Preview**. Also, your screens may not exactly resemble the ones shown, but the settings will be the same.

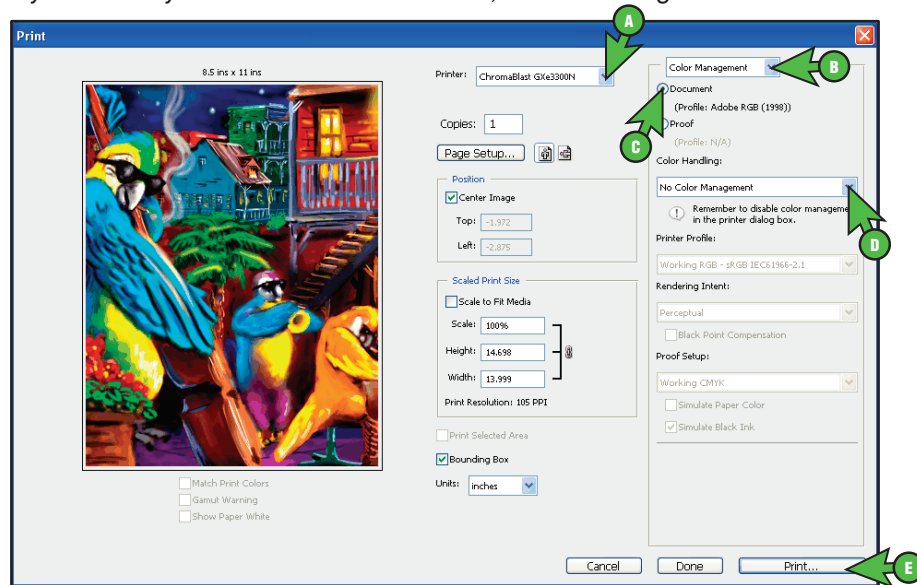


FIGURE 4

- 1.) Configure Photoshop Print Settings: (see Figure 4)
  - a. Click the drop-down arrow and select your **ChromaBlast GXe3300N** (see Figure 4 > A).
  - b. Click the drop-down arrow and select **Color Management** (see Figure 4 > B).
  - c. Select the radio button for **Document** (see Figure 4 > C).
  - d. Click the drop-down arrow and select **No Color Management** (see Figure 4 > D).
  - e. Click **Print** when you have entered the correct settings (see Figure 4 > E.). The following **Print** window will open (see Figure 5).
  - f. Select printer **ChromaBlast GXe3300N** (see Figure 5 > A)
  - g. You can begin printing your image by clicking **Print** (see Figure 5 > B).

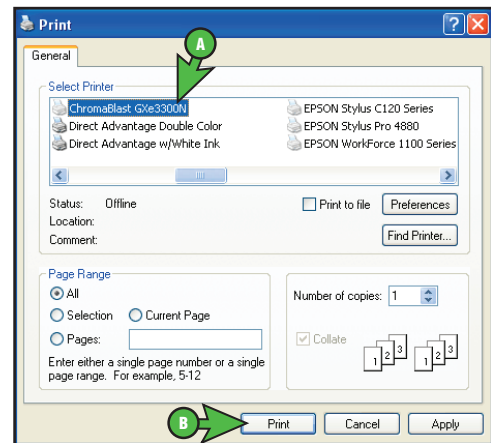


FIGURE 5

**Congratulations!** Photoshop setup is now complete. Remember to select **ChromaBlast GXe3300N** each time you are ready to print.