

Ricoh GX e3300N - ChromaBlast-R Driver

Setup and Print Guide: CoreIDRAW X5 & X6

IMPORTANT: Before proceeding, ensure the correct Ricoh (OEM) printer driver and ChromaBlast-R Driver have been installed. For assistance with driver installation, refer to the Installation Guide.

NOTE: Your screens and menus may differ depending on the version of software and operating system you are using. However, the settings will be the same.

CoreIDRAW Workspace Setup

- 1.) Open a New Page in CoreIDRAW (see *FIGURE 1*).

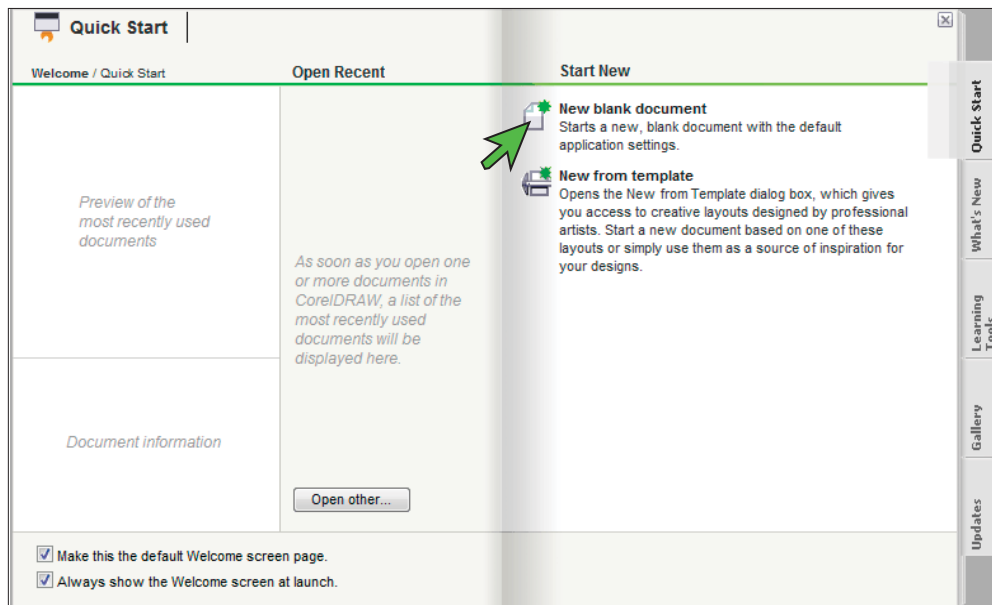


FIGURE 1

ChromaBlast-R: Ricoh GXe3300N - ChromaBlast-R Driver Setup and Print Guide: CoreDRAW X5 & X6

- 2.) Configure a New Document Workspace with the settings shown below (see FIGURE 2).

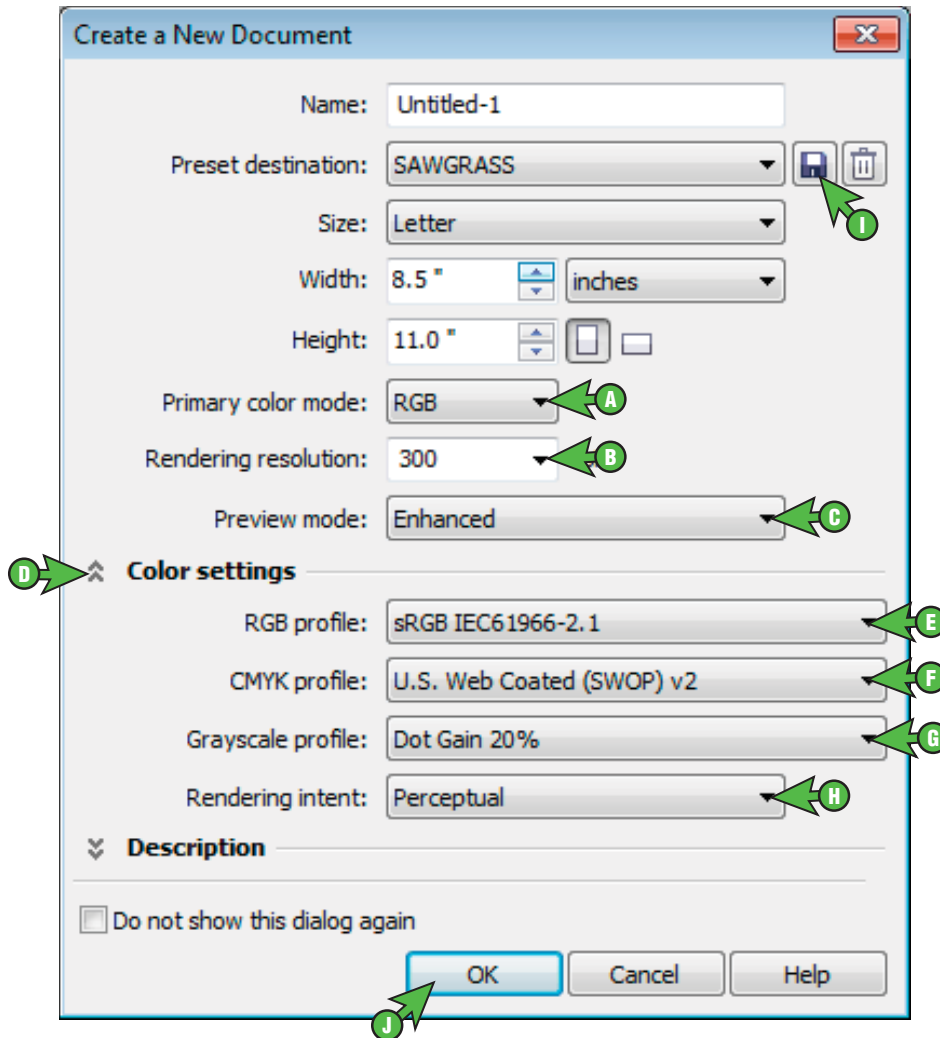


FIGURE 2

- | | |
|------------------------------------------------|---------------------------------------------------|
| A. Primary color mode: RGB | F. CMYK profile: U.S. Web Coated (SWOP) v2 |
| B. Rendering resolution: 300 | G. Grayscale profile: Dot Gain 20% |
| C. Preview mode: Enhanced | H. Rendering intent: Perceptual |
| D. Click the down arrow to view Color Settings | I. Add Preset: Name your new preset |
| E. RGB profile: sRGB IEC61966-2.1 | J. Click OK to continue |

ChromaBlast-R: Ricoh GXe3300N - ChromaBlast-R Driver

Setup and Print Guide: CorelDRAW X5 & X6

- 3.) In the Menu Bar, click **Tools > Color Management > Default Settings** (see FIGURE 3).

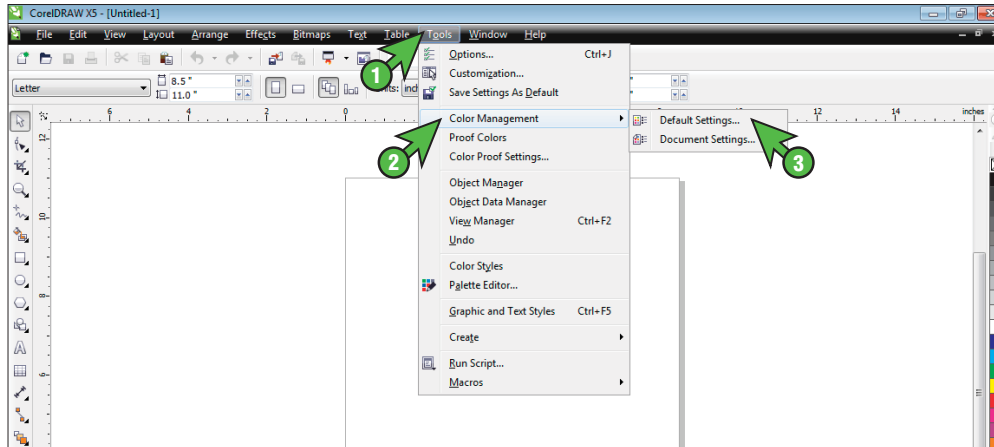


FIGURE 3

- 4.) In the Default Color Management Settings window, match your settings to the ones shown below (see FIGURE 4).

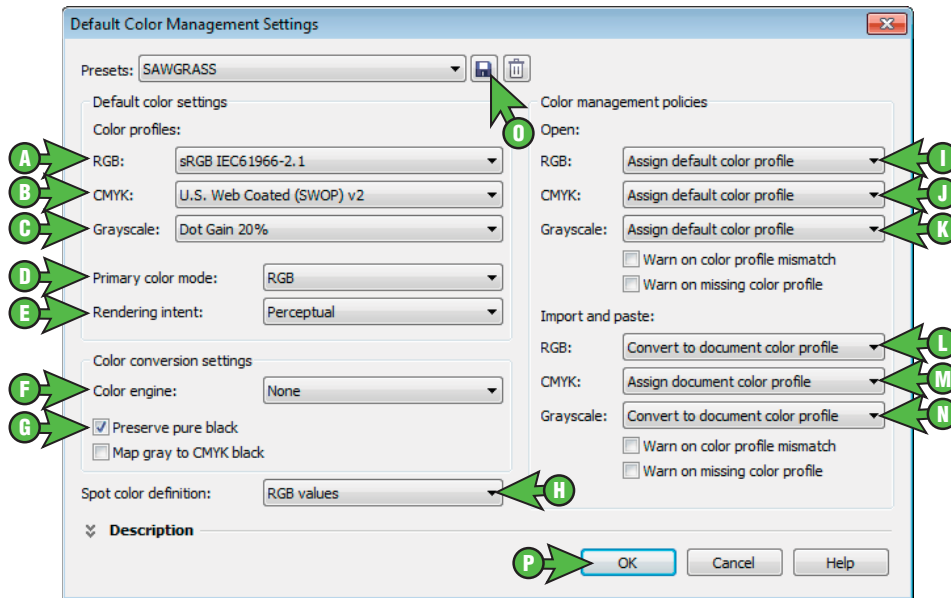


FIGURE 4

- | | |
|-------------------------------------------------------------------------------------------------------------------------------------------------------------------------------------------------------------------------------------------------------------------------------------------------------------------------------------------------------------|------------------------------------------------------------------------------------------------------------------------------------------------------------------------------------------------------------------------------------------------------------------------------------------------------------------------------------------------------------------------------------------------------------------------------------|
| <p>A. RGB: sRGB IEC61966-2.1</p> <p>B. CMYK: U.S. Web Coated (SWOP) v2</p> <p>C. Grayscale: Dot Gain 20%</p> <p>D. Primary color mode: RGB</p> <p>E. Rendering intent: Perceptual</p> <p>F. Color engine: None</p> <p>G. Check: Preserve pure black</p> <p>H. Spot color definition: RGB values</p> | <p>I. RGB: Assign default color profile</p> <p>J. CMYK: Assign default color profile</p> <p>K. Grayscale: Assign default color profile</p> <p>L. RGB: Convert to document color profile</p> <p>M. CMYK: Assign document color profile</p> <p>N. Grayscale: Convert to document color profile</p> <p>O. Add Preset: Name your new preset</p> <p>P. Click OK to continue</p> |
|-------------------------------------------------------------------------------------------------------------------------------------------------------------------------------------------------------------------------------------------------------------------------------------------------------------------------------------------------------------|------------------------------------------------------------------------------------------------------------------------------------------------------------------------------------------------------------------------------------------------------------------------------------------------------------------------------------------------------------------------------------------------------------------------------------|

ChromaBlast-R: Ricoh GXe3300N - ChromaBlast-R Driver

Setup and Print Guide: CorelDRAW X5 & X6

- 5.) In the Menu Bar, click **Tools > Color Management > Document Settings** (see *FIGURE 5*).

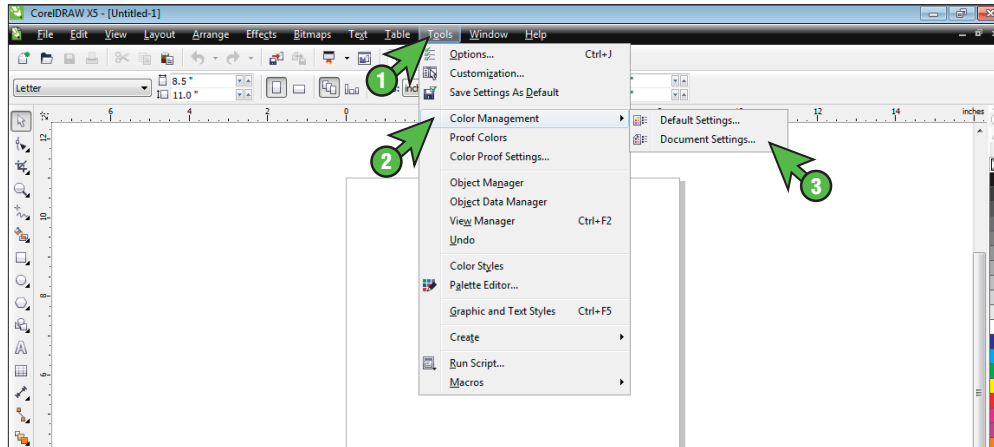


FIGURE 5

- 6.) In the Document Color Settings window, match your settings to the ones shown below (see *FIGURE 6*).

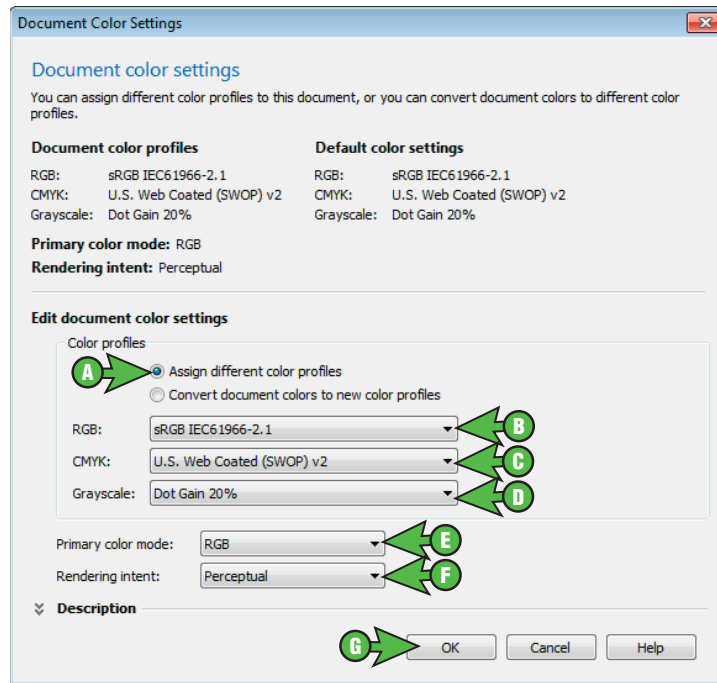


FIGURE 6

- | | |
|--------------------------------------------------------------------|----------------------------------------|
| A. Select the radio button: Assign different color profiles | E. Primary color mode: RGB |
| B. RGB: sRGB IEC61966-2.1 | F. Rendering intent: Perceptual |
| C. CMYK: U.S. Web Coated (SWOP) v2 | G. Click OK to continue |
| D. Grayscale: Dot Gain 20% | |

ChromaBlast-R: Ricoh GXe3300N - ChromaBlast-R Driver

Setup and Print Guide: CorelDRAW X5 & X6

Printing from CorelDRAW with ChromaBlast R GXe3300N

- 7.) With the correct color settings entered, you are now ready to print. In the Menu Bar, click **File > Print**. In the Print window, match your settings to the ones shown below (see *FIGURE 7*).

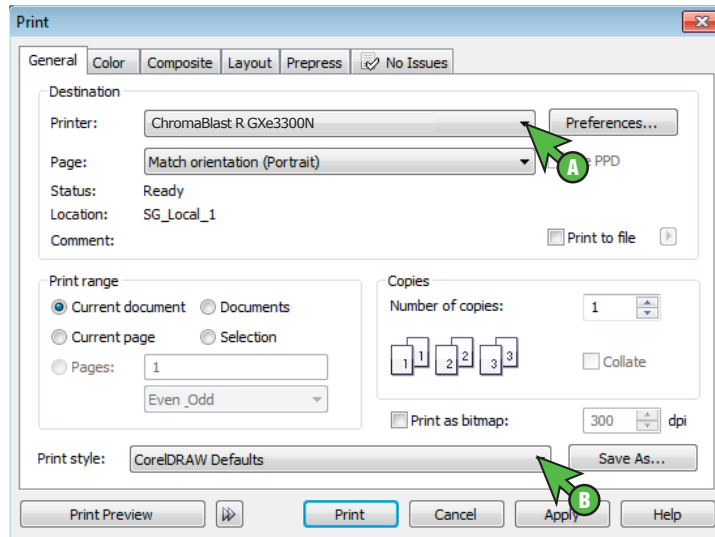


FIGURE 7

- A. Printer: **ChromaBlast R GXe3300N**
- B. Print style: **CorelDRAW Defaults**

- 8.) In the Print window, click the **Color** tab and match your settings to the ones shown below (see *FIGURE 8*).

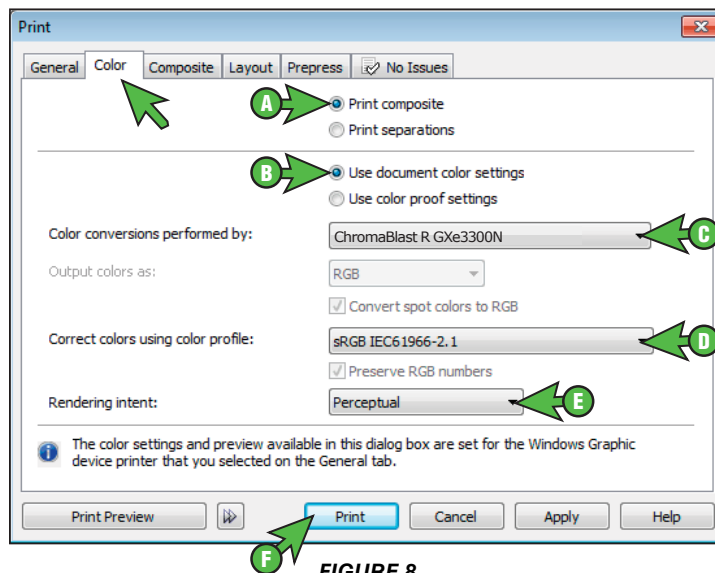


FIGURE 8

- A. Select the radio button: **Print composite**
- B. Select the radio button: **Use document color settings**

ChromaBlast-R: Ricoh GXe3300N - ChromaBlast-R Driver
Setup and Print Guide: CorelDRAW X5 & X6

C. Color conversions performed by: **ChromaBlast R GXe3300N**

D. Correct colors using color profile: **sRGB IEC61966-2.1**

NOTE: *If sRGB IEC61966-2.1 is not an option, then review Step 6 of this document.*

E. Rendering Intent: **Perceptual**

F. Click **Print** when you are ready to print your image

Congratulations! CorelDRAW Setup is now complete. Remember to select the ChromaBlast R GXe3300N each time you are ready to print.

For the absolute latest information and updates on all products, materials, processes and/or procedures relative to all offerings by or through Sawgrass Technologies, Inc., please refer to our website:
www.sawgrassink.com