

# Ricoh GX e3300N

## Setup and Print Guide: CorelDRAW 12, X3 & X4

Before proceeding, please be sure you have the correct Ricoh OEM printer driver and ChromaBlast GXe3300N driver installed. For Assistance with driver installation, refer to the Installation Guide.

**NOTE:** Your screens and menus may differ depending on the version of software and operating system you are using. However, the settings will be the same.

### CorelDRAW 12, X3, & X4 Setup Guide

Begin by opening a **new/blank** page in CorelDraw. At the top of the application click **Tools > Color Management**. This will open the **Color Management** window. (see **FIGURE 1**).

**NOTE:** You must have an image or blank page opened to access Color Management.

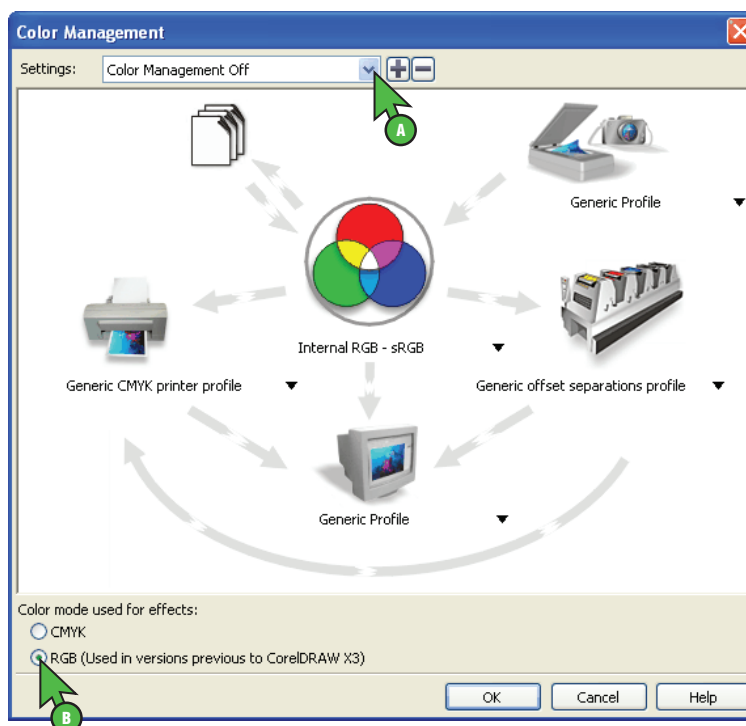


FIGURE 1

1.) Configuring Color Management: (see **FIGURE 1**)

- a. Click the drop-down arrow and select **Color Management Off** (see **FIGURE 1 > A**).
- b. Select the radio button for **RGB** (see **FIGURE 1 > B**). Click **OK** to save your new settings.

**NOTE:** When **RGB** has been selected, **Settings** will automatically change from **Color Management Off** to **Custom (Current settings not saved)**.

# ChromaBlast-R: Ricoh GX e3300N

## Setup and Print Guide: CoreIDRAW CoreIDRAW 12, X3 & X4 (cont'd 2:2)

### Printing from CoreIDRAW with ChromaBlast GXe3300N

Now that you have adjusted the Color Management settings, you are ready to print. Begin by opening an image in CoreIDRAW. At the top of the application click **File > Print (Ctrl + P)**. This will open the **Print** window (see *FIGURE 2*).

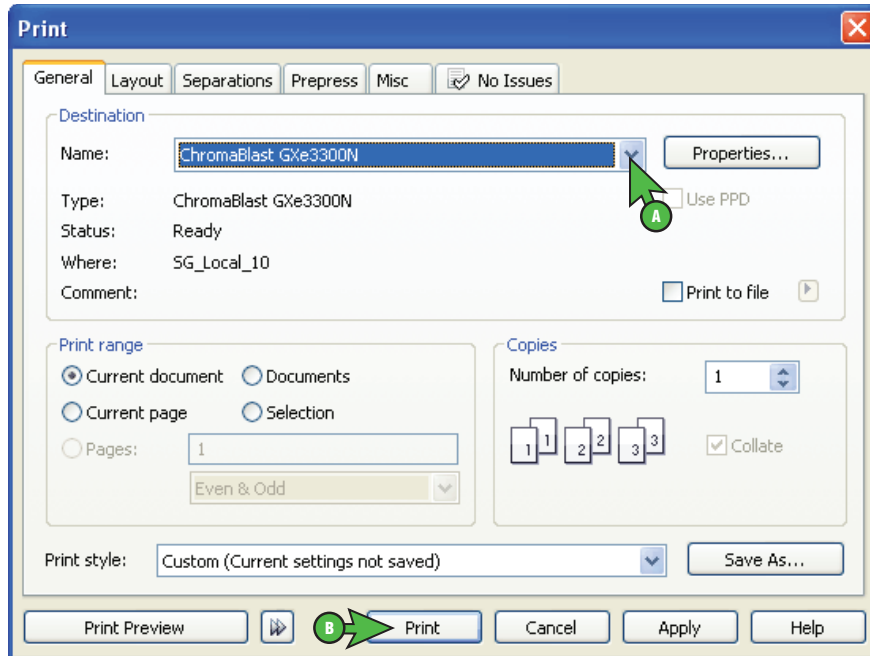


FIGURE 2

1. Printing from CoreIDRAW: (see *FIGURE 2*)
  - a. Click the drop-down arrow and select **ChromaBlast GXe3300N** (see *FIGURE 2 > A*).
  - b. When you are ready to print, click **Print** (see *FIGURE 2 > B*).

**Congratulations!** CoreIDRAW setup is now complete. Remember to select ChromaBlast GXe3300N each time you are ready to print.