

# Ricoh GXe3300N

## Setup and Print Guide: Elements 8, 9 & 10

**IMPORTANT:** Before proceeding, please be sure you have the correct Ricoh OEM printer driver and ChromaBlast-R Driver installed. For assistance with driver installation, refer to the Installation Guide.

**NOTE:** Your screens and menus may differ depending on the version of software and operating system you are using. However, the settings will be the same.

### Photoshop Elements Workspace Setup

Begin by opening an image in Photoshop Elements. At the top of the application click **Edit > Color Settings**. This will open the **Color Settings** window (see *FIGURE 1*).

- 1.) Configure Color Settings: (see *FIGURE 1*)
  - a. **Color Settings > Choose how to manage color in your images:** > select the radio button for **No Color Management** (see *FIGURE 1 > A*).
  - b. Click **OK** to save your changes and continue (see *FIGURE 1 > B*).

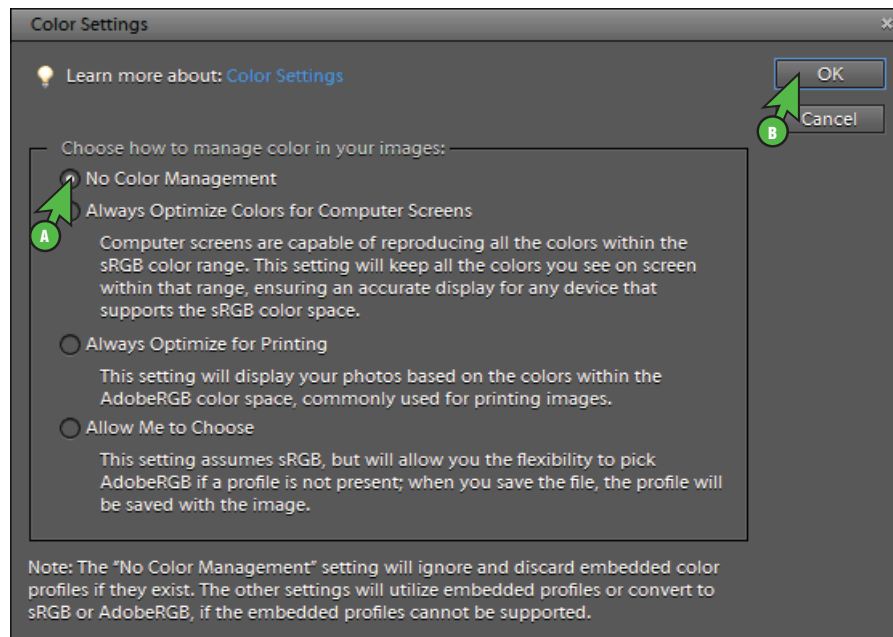


FIGURE 1

# ChromaBlast-R: Ricoh GXE3300N Setup and Print Guide: Elements 8, 9 & 10

## 2.) Configure Working Space Settings: (see FIGURE 2)

- a. At the top of you application, click **Image > Mode > RGB Color** (see FIGURE 2 > A).
- b. A check mark should now be visible next to **RGB Color** (see FIGURE 2 > B).

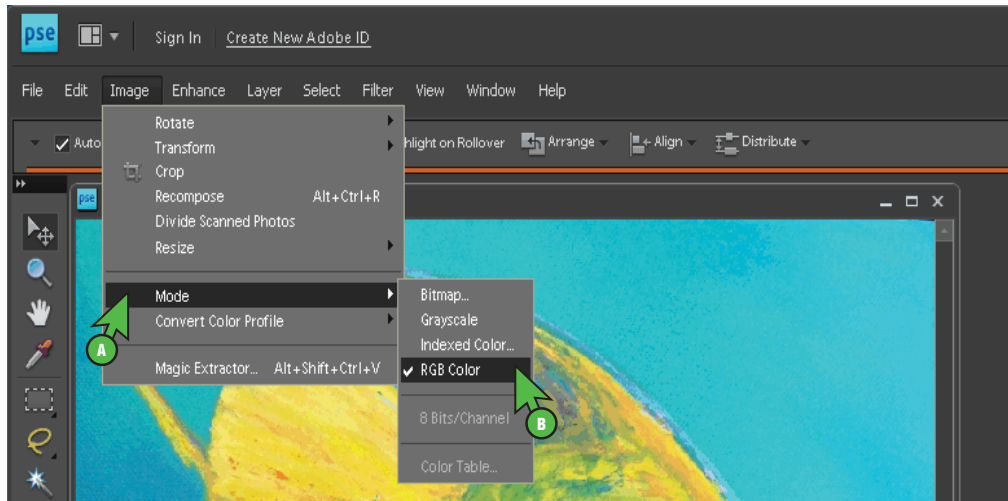


FIGURE 2

## 3.) Configure Embedded Profile: (see FIGURE 3)

- a. At the top of you application, click **Image > Convert Color Profile > Convert to sRGB Profile** (see FIGURE 3 > A).

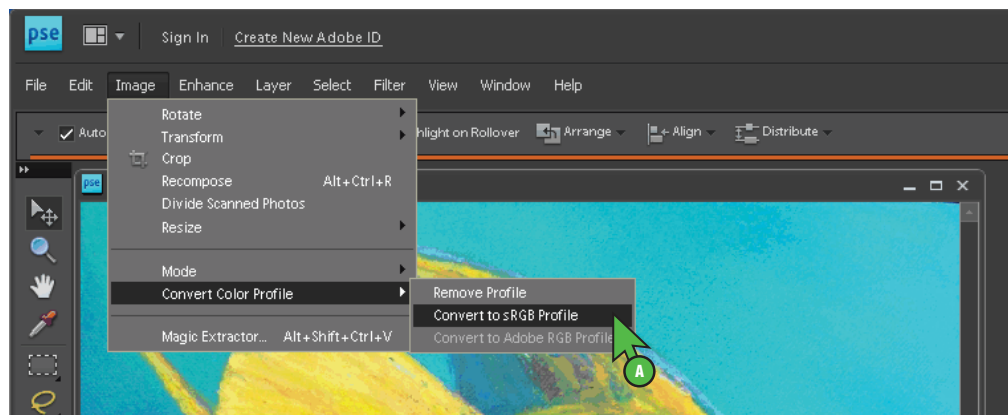


FIGURE 3

# ChromaBlast-R: Ricoh GXe3300N Setup and Print Guide: Elements 8, 9 & 10

## Printing from Elements with ChromaBlast GXe3300N

4.) Configure Print Settings: (see FIGURE 4)

- At the top of the application click **File > Print**. This will open the **Print** window (see FIGURE 4 > A).
- Click the drop-down arrow and select **ChromaBlast GXe3300N** (see FIGURE 4 > B).
- At the bottom of the **Print** window, click **More Options** (see FIGURE 4 > C). This will open the **More Options** window (see FIGURE 4 > D).
- Click **Color Management** (see FIGURE 4 > E).
- Click the drop-down arrow and select **No Color Management** (see FIGURE 4 > F).
- Click **OK** to save your selections (see FIGURE 4 > G). Clicking **OK** will return you to the **Print** window (see FIGURE 4 > A).
- You can begin printing your image by clicking **Print** (see FIGURE 4 > H).

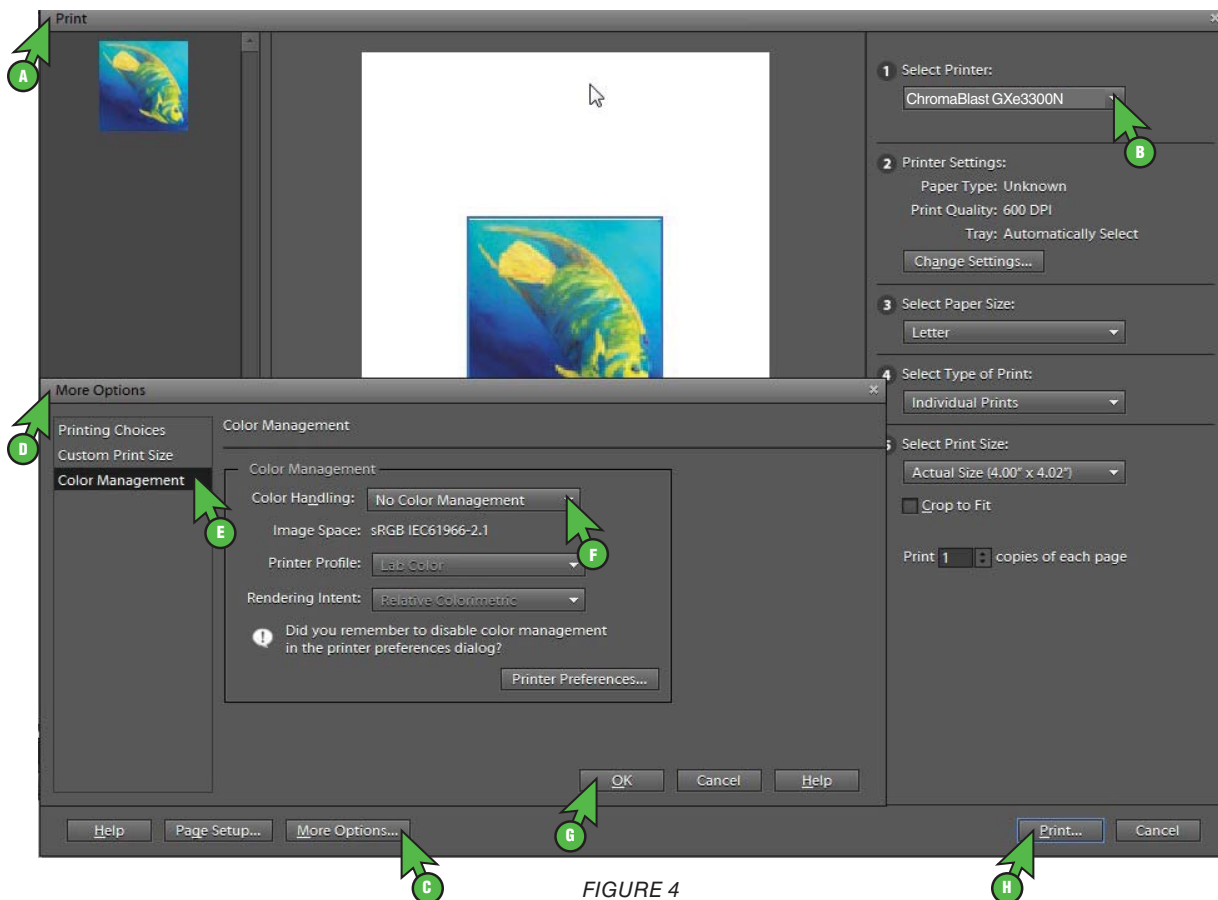


FIGURE 4

**Congratulations!** Photoshop Elements setup is now complete. Remember to select ChromaBlast GXe3300N each time you are ready to print.