

# Ricoh GelSprinter GX7000

## Setup and Print Guide: Illustrator CS5

Before proceeding, please be sure you have the correct OEM printer driver and ChromaBlast Driver installed. For assistance with driver installation, refer to the Installation Guide.

**NOTE:** Your screens and menus may differ depending on the version of software and operating system you are using. However, the settings will be the same.

### Illustrator Setup Guide

1. Begin by opening Adobe Illustrator. At the top of the application click **Edit > Color Settings**. This will open the Color Settings window (see *FIGURE 1*). Match your settings to the ones show below:

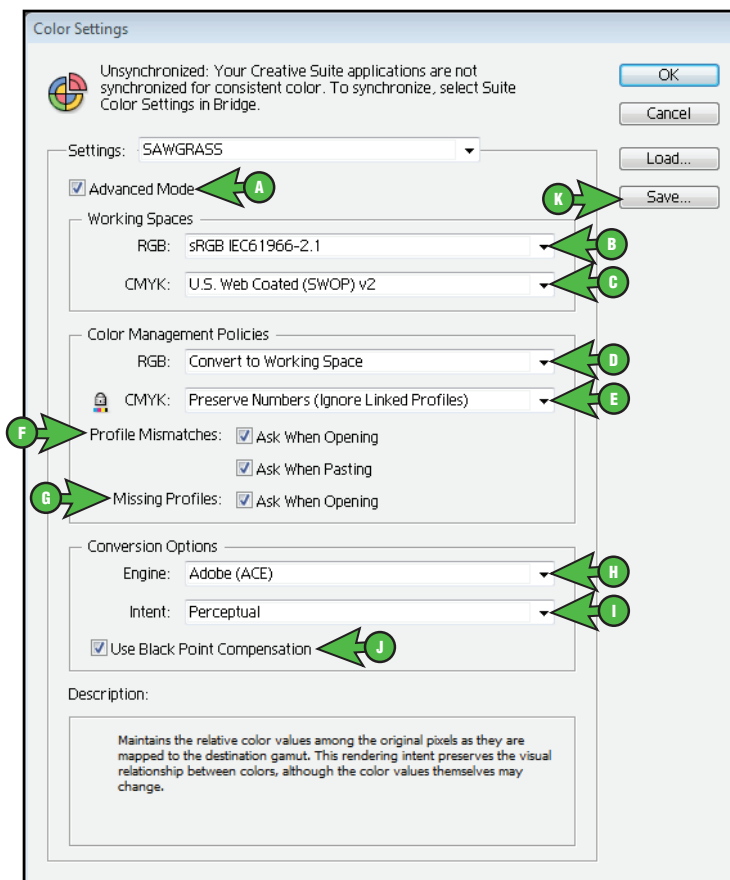


FIGURE 1

- A. Check **Advanced Mode**
- B. RGB: **sRGB IEC61966-2.1**
- C. CMYK: **U.S. Web Coated (SWOP) v2**
- D. RGB: **Convert to Working RGB**

## ChromaBlast-R: Ricoh GelSprinter GX7000 Setup and Print Guide: Illustrator CS5 (cont'd 2:6)

- E. CMYK: **Preserve Numbers (Ignore Linked Profiles)**
- F. Profile Mismatches: Check **Ask When Opening** and also check **Ask When Pasting**
- G. Missing Profiles: Check **Ask When Opening**
- H. Engine: **Adobe (ACE)**
- I. Intent: **Perceptual**
- J. Check **Use Black Point Compensation**
- K. Once your settings match, click **Save**. This will open the Save window (see *FIGURE 2*). NAME your new preset in the **File Name** field and click **Save** when complete.

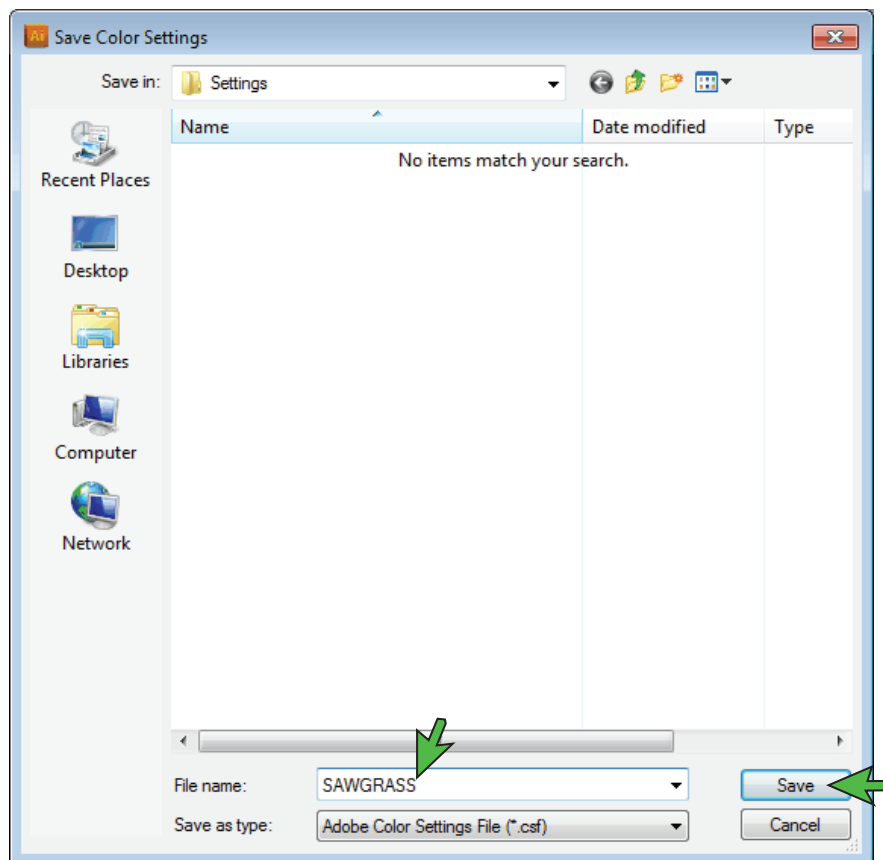


FIGURE 2

The Illustrator RGB working space is now set.

## ChromaBlast-R: Ricoh GelSprinter GX7000 Setup and Print Guide: Illustrator CS5 (cont'd 3:6)

- At the top of the application click **File > New...** (Ctrl+N). This will open the New Document window (see *FIGURE 3*). Match your settings to the ones show below:

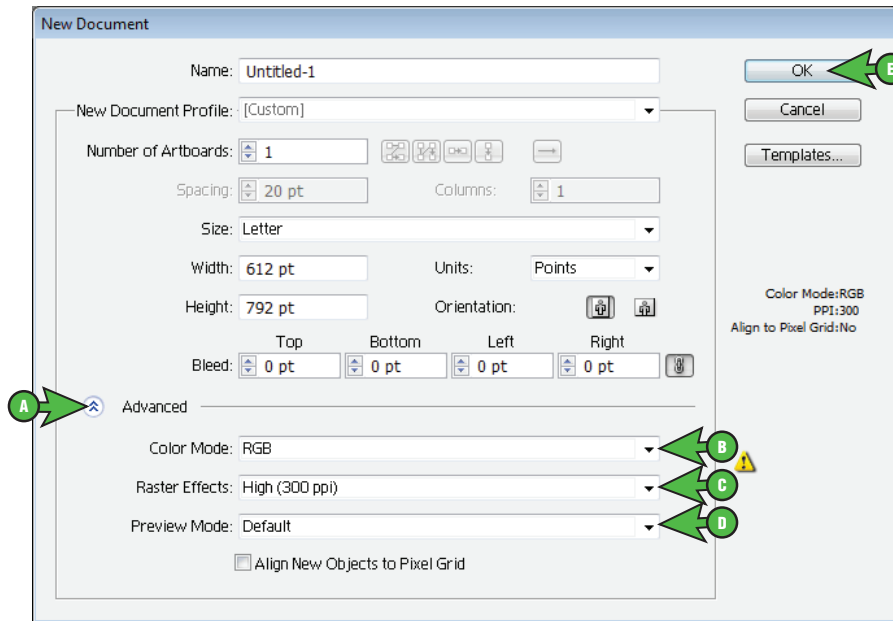


FIGURE 3

- Click the drop-down [▾] arrow next to **Advanced**
  - Click the drop-down [▾] arrow and select **RGB**
  - Click the drop-down [▾] arrow and select **High (300 ppi)**
  - Click the drop-down [▾] arrow and select **Default**
  - Click **OK** to continue
- When opening or importing images in Illustrator, you may encounter a **Missing Profile** warning. In this instance, select the radio [☑] button for **Assign current working space: sRGB IEC61966-2.1**. Click **OK** to continue (see *FIGURE 4*).

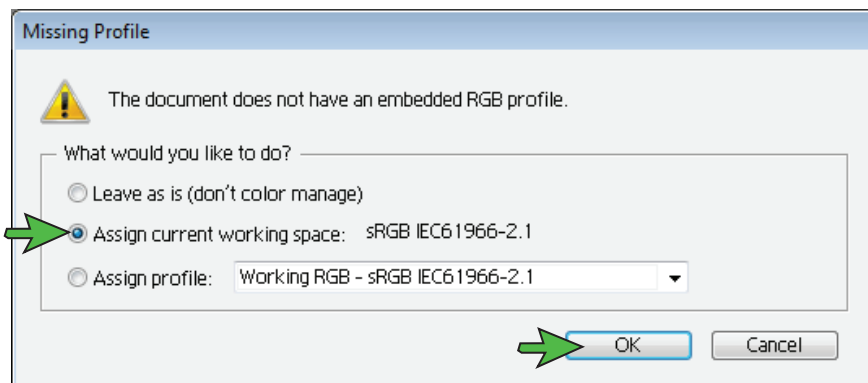


FIGURE 4

**NOTE:** Always choose to use or convert to sRGB IEC61966-2.1.

# ChromaBlast-R: Ricoh GelSprinter GX7000

## Setup and Print Guide: Illustrator CS5 (cont'd 4:6)

- Once an image has been opened or imported in Illustrator, you will need to ensure that RGB color mode has been selected. In the menu bar, click **File > Document Color Mode > RGB Color**. A check mark should now be visible beside **RGB Color** (see *FIGURE 5*).

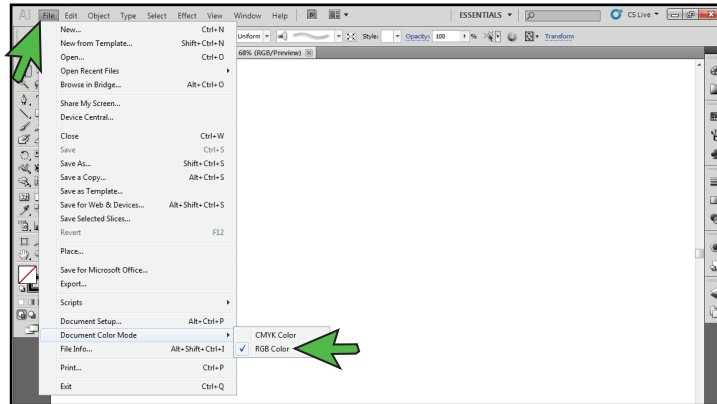


FIGURE 5

## Printing from Illustrator with ChromaBlast GX7000

Begin by opening an image in Illustrator. In the menu bar, click **File > Print**. This will open the Print window (see *FIGURE 6*). Match your settings to the ones shown below:

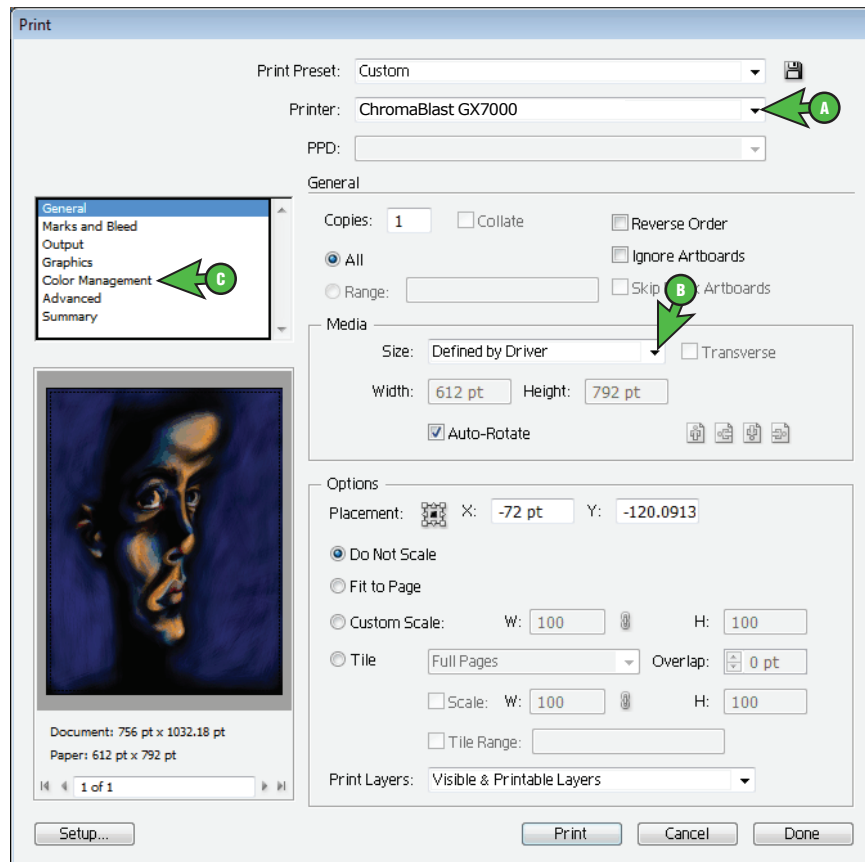


FIGURE 6

- Click the drop-down [▼] arrow and select **ChromaBlast GX7000**

## ChromaBlast-R: Ricoh GelSprinter GX7000 Setup and Print Guide: Illustrator CS5 (cont'd 5:6)

- B. Click the drop-down [▼] arrow and select **Defined by Driver**
- C. Once your settings match, click **Color Management**. This opens the Color Management Screen (see FIGURE 7)

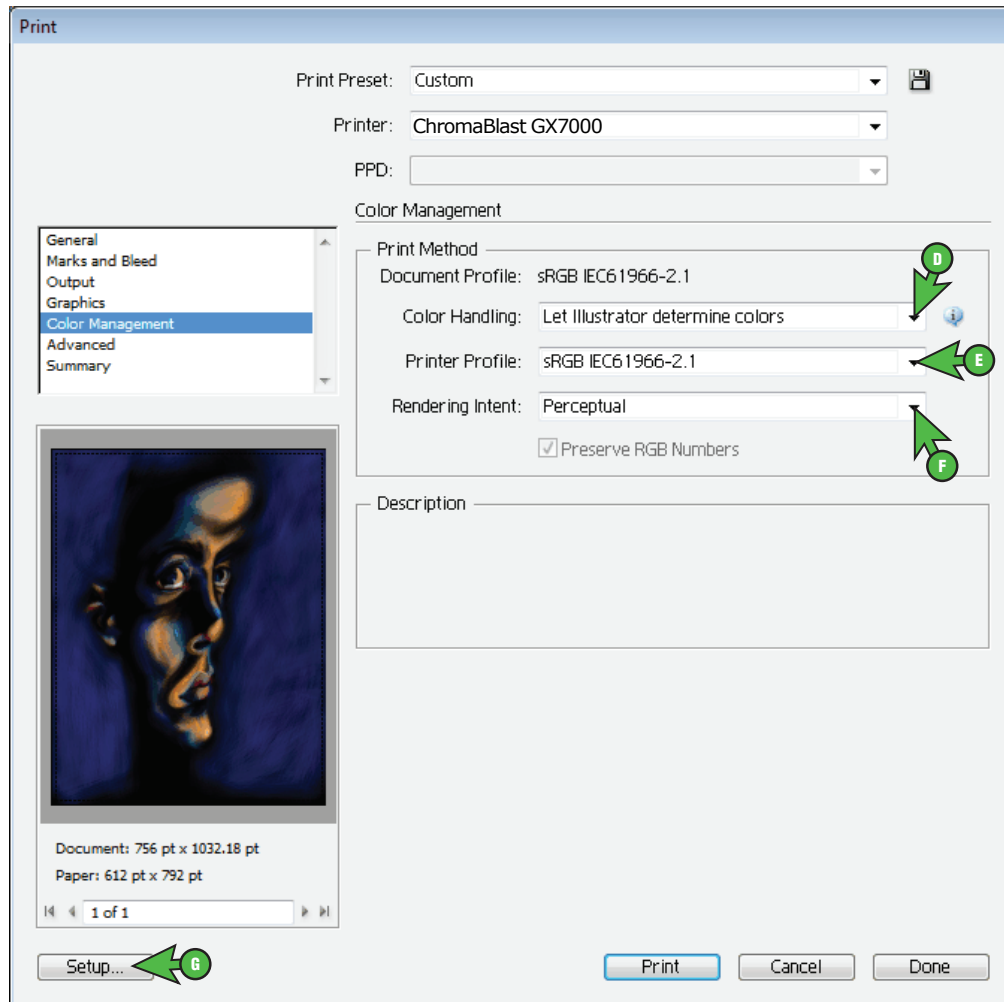


FIGURE 7

- D. Click the drop-down [▼] arrow and select **Let Illustrator determine colors**
- E. Click the drop-down [▼] arrow and select **sRGB IEC61966-2.1**
- F. Click the drop-down [▼] arrow and select **Perceptual**
- G. Once your settings match, click **Setup**. This will open the Print window (see FIGURE 8)

## ChromaBlast-R: Ricoh GelSprinter GX7000 Setup and Print Guide: Illustrator CS5 (cont'd 6:6)

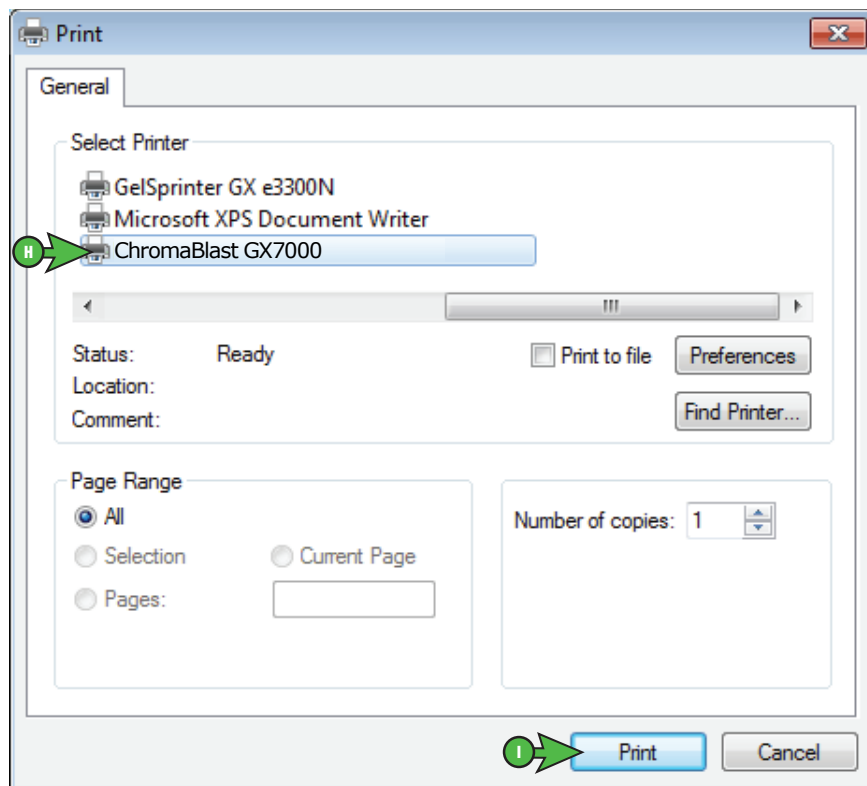


FIGURE 8

- H. Select printer **ChromaBlast GX7000**
- I. Click **Print** when you are ready to print your image.

**Congratulations!** Adobe Illustrator setup is now complete. Remember to select ChromaBlast GX7000 each time you are ready to print.

**NOTE:** For the absolute latest Information and Updates on all Products, Materials, Processes, and/or Procedures relative to all offerings by or through Sawgrass Technologies, Inc., please refer to our Website: [www.sawgrassink.com](http://www.sawgrassink.com)