



ChromaBlast-R Color Management Driver for the
Ricoh GX

7000

USER'S MANUAL

Version 3.0.4

NOTE: For the absolute latest Information and Updates on all Products, Materials, Processes, and / or Procedures relative to all offerings by or through Sawgrass Technologies, Inc., please refer to our Website: www.sawgrassink.com

Ricoh GX7000 GelSprinter ChromaBlast-R Driver User's Manual

ChromaBlast-R Driver is equipped with a user-friendly software interface that allows individuals to access and customize driver configuration settings for optimal printing performance. As an added bonus, ChromaBlast-R Driver is also outfitted with several resource and utility features to bring additional help and support for customers looking to bolster their printing experience. Through these powerful features, users are able to gain complete control over their image quality, color output and print options.

1. To view the ChromaBlast-R Driver configuration settings, click your start icon and select **Devices and Printers** (see *FIGURE 1*). If you are using an older version of WINDOWS, you will instead select **Printers and Faxes**.

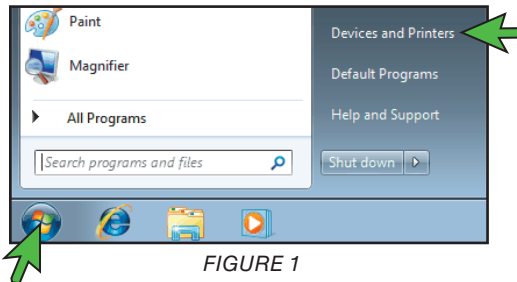


FIGURE 1

2. In the Devices and Printers folder, right-click the **ChromaBlast-R Driver GX7000** and select **Printing Preferences** (see *FIGURE 2*). This will open the ChromaBlast-R Driver GX7000 Printing Preferences window (see *FIGURE 3*).

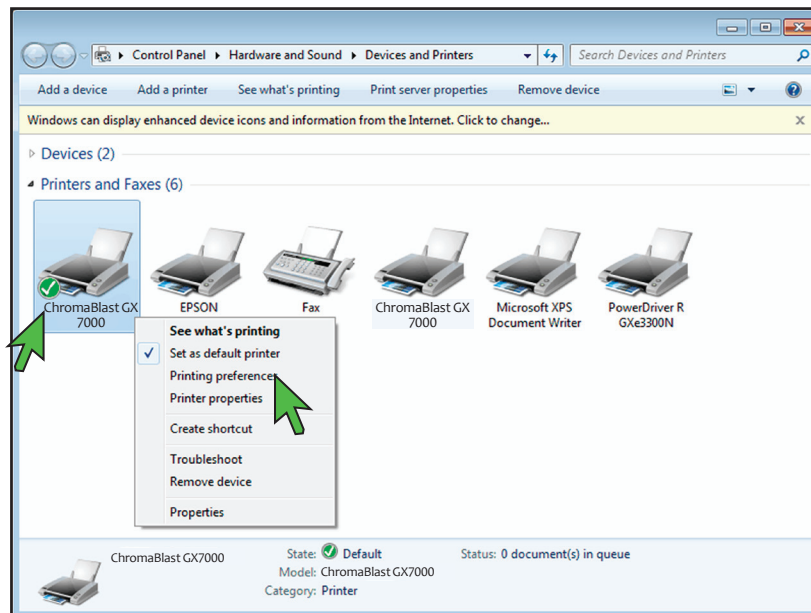


FIGURE 2

ChromaBlast-R: Ricoh GX7000

ChromaBlast-R Driver User's Manual (Continued... 3:10)

3. With the ChromaBlast-R Driver GX7000 Printing Preference window open, click the **Virtual Printer Driver** tab. Here you will find five different **SECTIONS** to utilize: (see *FIGURE 3*).

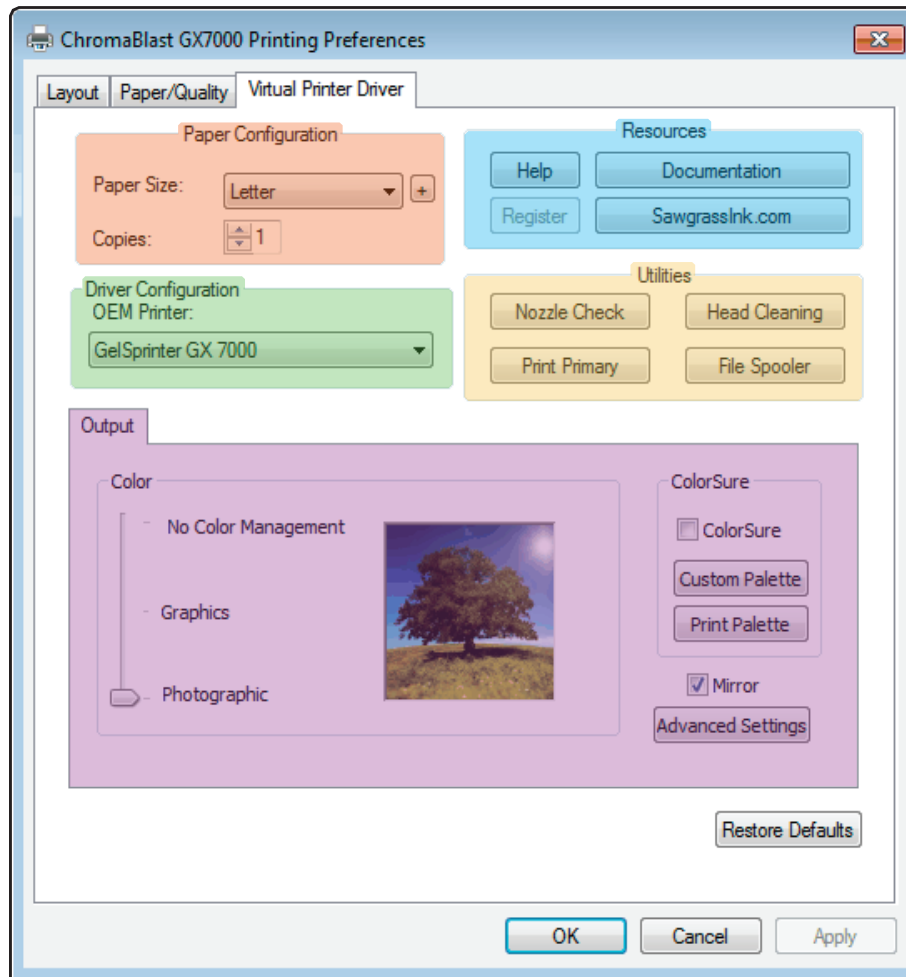


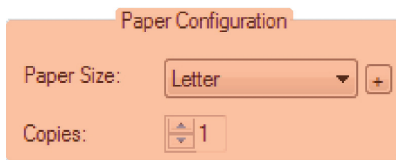
FIGURE 3

- SECTION 1** **Paper Configuration** Choose Paper Size and Copies
- SECTION 2** **Driver Configuration** Select OEM printer intended for use.
- SECTION 3** **Output** Adjust Color, create Palette and Mirror image.
- SECTION 4** **Resources** Access Documentation, Help and On-line Support.
- SECTION 5** **Utilities** Use if Printer Maintenance is needed.

ChromaBlast-R: Ricoh GX7000

ChromaBlast-R Driver User's Manual (Continued... 4:10)

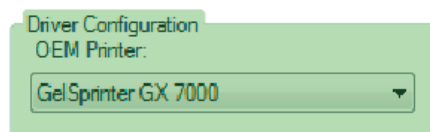
SECTION 1



Paper Size – Sets the desired output paper size used in the printer. Adjust this to match the size of the transfer paper in the paper tray.

Copies – Sets the number of prints needed per image. Use this feature when multiple prints of the same image are needed.

SECTION 2



OEM Printer – Sets the OEM printer intended for use with ChromaBlast-R Driver. This feature is particularly useful when printing to multiple printers of the same ink set or multiple printers that require multiple drivers. For instance, if you have two GX7000's and one is for printing ChromaBlast-R while the other is for printing SubliJet-R, you are able to set the printer loaded with ChromaBlast-R as the default printer in the ChromaBlast-R Driver or vice versa. On the other hand, if you have two GX7000's and both are for printing with ChromaBlast-R, you can choose between each printer per print job.

SECTION 3



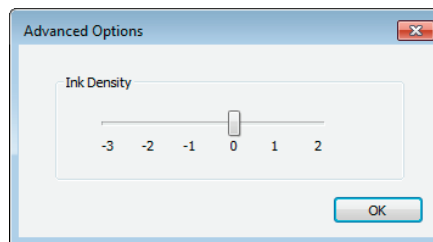
No Color Management – With this setting, color management within the Chromablast-R Driver is turned off. As a result, color is managed by the graphics application. The ChromaBlast-R driver was developed using ink specifically designed for the Ricoh GX7000 printer. Therefore, it is recommended to use either Photographic or Graphics to allow the ChromaBlast-R Driver to manage color.

Graphics – This setting is intended as a business graphics color management solution. It is most suitable for business logos and designs that require a more vivid color output.

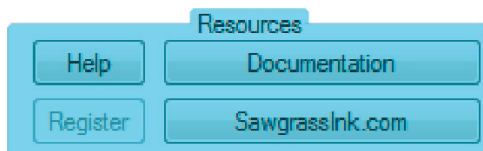
ChromaBlast-R: Ricoh GX7000

ChromaBlast-R Driver User's Manual *(Continued... 5:10)*

- Photographic** – This setting is intended as a realistic color management solution. It is most suitable for photographic images containing landscapes or portraits.
- Mirror** – Check this box to “flip” or reverse your image. The image becomes reversed when transferring from paper to substrate. Therefore, you will need to “flip” or reverse the image before printing to paper.
- ColorSure** – Check this box if you want to use the ColorSure color palette. ColorSure is a method for reproducing exact spot colors. By picking colors from the ColorSure Palette, you will be able to consistently reproduce colors in a reliable manner.
- Custom Palette** – Here you can add your own unique colors to the ColorSure palette. ColorSure must be checked in Color Options in order to use this feature.
- Print Palette** – Click here to print the default ColorSure Palette. This feature allows you to see how colors will look once transferred to your desired substrate. Before you print the ColorSure Palette, be sure to choose the paper size, paper type and substrate that most closely resemble those which you are using. The default ColorSure Palette will also contain custom colors once you have added and saved them using the Custom Palette utility.
- Advanced Settings** – This option enables you to adjust **Ink Density** (see illustration below). If too much ink is being laid down, or your image is not drying quickly enough, move the slider to the left (in the direction of the negative values). Conversely, if your graphic is not saturated enough, increase the density value by moving the slider to the right. The default value is zero.



SECTION 4



- Help** – Click here to access general information about ChromaBlast-R Driver and its functions. The help dialog menu also contains a direct link to our Technical Support web page, where you can find the latest driver updates, literature and educational resources offered by Sawgrass Technologies, Inc.
- Documentation** – Click here to access the folder where the literature was stored on your PC during the installation of ChromaBlast-R Driver. This literature will guide you through the installation, registration and setup of your printer, driver and software.

ChromaBlast-R: Ricoh GX7000

ChromaBlast-R Driver User's Manual *(Continued... 6:10)*

Register – Click here to register your product. Registration is required to unlock all product features and functions that ChromaBlast-R Driver has to offer. You must register ChromaBlast-R Driver for every PC on which it is installed.

Sawgrassink.com – Click here to access the Sawgrass Technologies, Inc. website. You will find the absolute latest information and updates on all products, materials, processes, and/or procedures relative to all offerings by or through Sawgrass Technologies, Inc.

SECTION 5



Nozzle Check – Click here to print a test pattern to check nozzle condition. If any of the nozzle patterns are missing or incomplete, then a head cleaning is required.

Head Cleaning – Click here to initiate the head cleaning process. This feature is necessary when nozzles are missing thus causing color shift or “banding” in your printed images. You should print a nozzle check to confirm missing nozzles before performing a head cleaning. Repeat the Head Cleaning until a complete nozzle check has been achieved. Cartridge users should only perform two (2) head cleanings, while users of bulk ink systems can try up to five (5). Contact technical support if you fail to achieve a good / complete nozzle check after the recommended amount of cleanings.

Print Primary – Click here to print a primary ink chart. This chart contains a series of blocks which represent each ink channel on the print head. It can be useful when attempting to troubleshoot or trying to clear clogged nozzles.

File Spooler – Click here to launch the File Spooler Utility. This feature is solely intended for advanced users and technical support for troubleshooting. It allows you to print jobs that were previously processed and saved to disk as text files or print ready files, also known as PRN files.

ChromaBlast-R: Ricoh GX7000

ChromaBlast-R Driver User's Manual (Continued... 7:10)

- 4.) At the top of the ChromaBlast-R Driver GX7000 Printing Preference window, click the **Layout** tab. Here you will find four different **SECTIONS** to utilize: (see *FIGURE 4*).

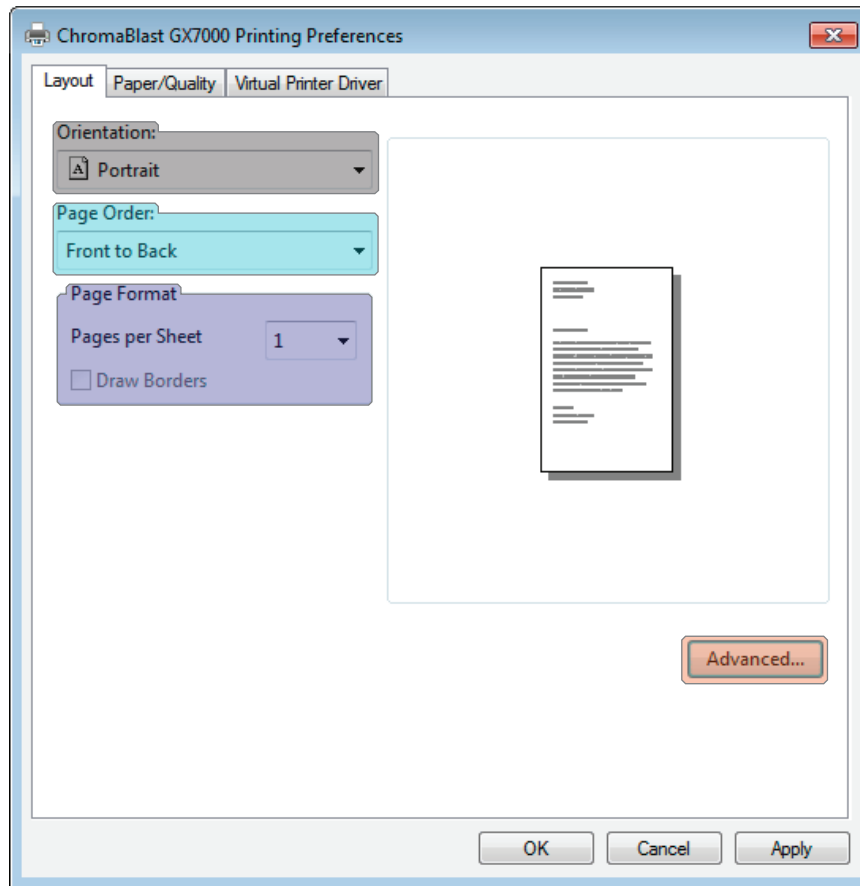
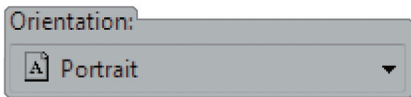


FIGURE 4

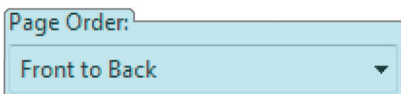
- SECTION 6** **Orientation** Choose the direction in which an image is printed.
- SECTION 7** **Page Order** Sets the chronological order when printing images.
- SECTION 8** **Page Format** Adjust the number of pages per sheet.
- SECTION 9** **Advanced...** Access the current Document Settings.

SECTION 6



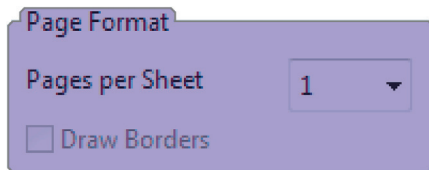
- Portrait** – With this selection the page height is longer than the width. In other words, the image is printed vertically from top to bottom.
- Landscape** – With this selection the page width is longer than the height. In other words, the image is printed horizontally from left to right.

SECTION 7



- Front to Back** – Using this setting will print the first image first and the last image last. For instance, if 4 different images are printed at the same time, they will print in the following order: 1, 2, 3 and 4.
- Back to Front** – Using this setting will print the last image first and the first image last. For instance, if 4 different images are printed at the same time, they will print in the following order: 4, 3, 2 and 1.

SECTION 8



- Pages per Sheet** – Allows you to print two or four pages on single sheets of paper.
- Draw Borders** – Prints frames around the pages printed on each sheet.

SECTION 9



- Document Settings** – Click here for an overview of the default advanced document settings. These settings have been specifically engineered per printer platform and should not be adjusted by the end user.

ChromaBlast-R: Ricoh GX7000

ChromaBlast-R Driver User's Manual (Continued... 9:10)

- 5.) At the top of the ChromaBlast-R Driver GX7000 Printing Preference window, click the **Paper/Quality** tab. Here you will find three different **SECTIONS** to utilize: (see *FIGURE 5*).

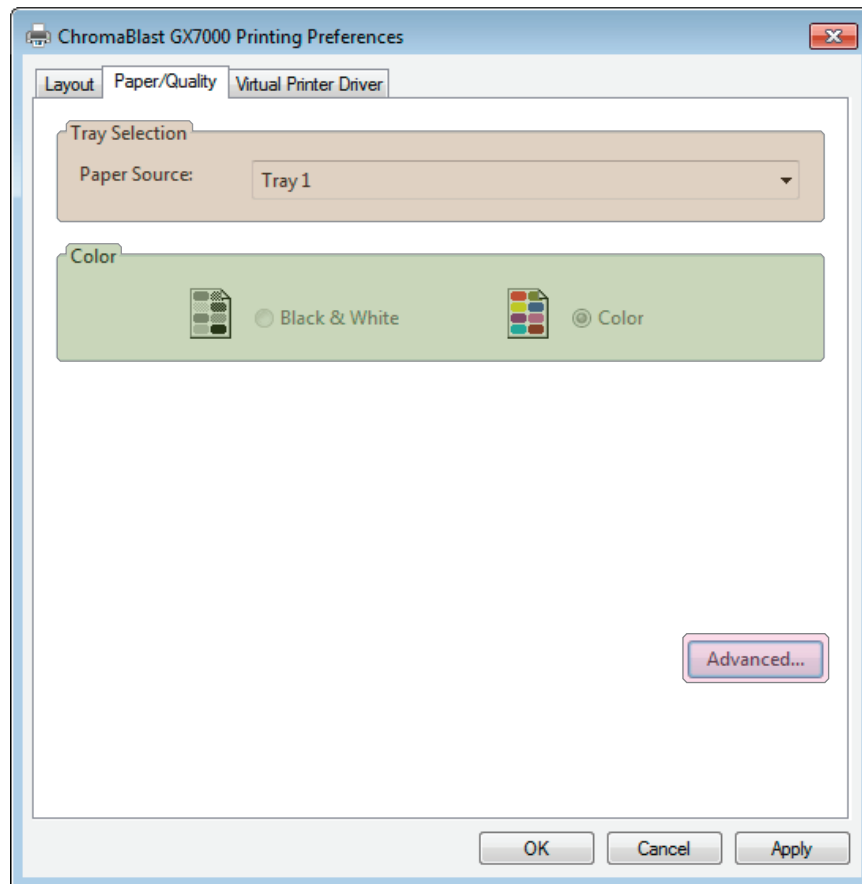


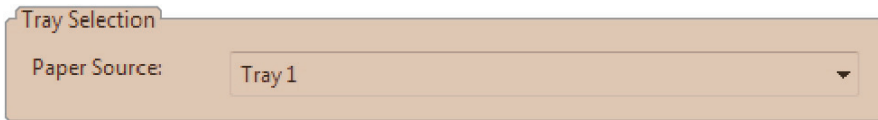
FIGURE 5

- SECTION 10** **Tray Selection** Allows you to select the printer's paper source.
- SECTION 11** **Color** This locked default is controlled by the ChromaBlast-R.
- SECTION 12** **Advanced...** Access the current Document Settings.

ChromaBlast-R: Ricoh GX7000

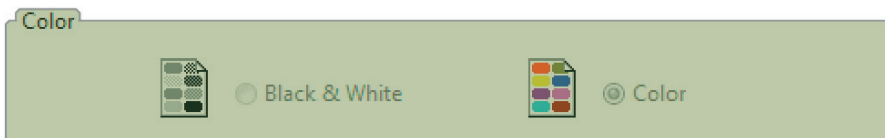
ChromaBlast-R Driver User's Manual (Continued... 10:10)

SECTION 10



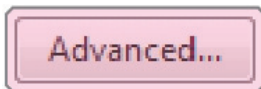
- Automatically Select** – Use this setting if you would like the printer driver to select the appropriate tray as your paper source.
- Tray 1** – Use this setting if you plan to use the primary paper tray as your paper source. It is recommended to use this as your default paper source.
- Bypass Tray** – Use this setting if your printer is equipped with an additional tray and you would like to use it as your primary paper source.

SECTION 11



- Black & White** – This setting has been specifically engineered per printer platform and should not be adjusted by the end user.
- Color** – This setting has been specifically engineered per printer platform and should not be adjusted by the end user.

SECTION 12



- Document Settings** – Click here for an overview of the default advanced document settings. These settings have been specifically engineered per printer platform and should not be adjusted by the end user.

Please visit us on the web for the absolute latest Information and updates on all products, materials, processes, and / or procedures relative to all offerings by or through Sawgrass Technologies, Inc.:
www.sawgrassink.com