

# Epson WorkForce 30

## Setup and Print Guide: Photoshop CS5

Before proceeding, please be sure you have the correct OEM printer driver and ChromaBlast Driver installed. For Assistance with driver installation, refer to the Getting Started Guide.

**NOTE:** Your screens and menus may differ depending on the version of software and operating system you are using. However, the settings will be the same.

### Photoshop CS5 Setup Guide

1. Begin by opening Photoshop. In the menu bar, click **Edit > Color Settings** (Ctrl+Shift+K): (see *FIGURE 1*)

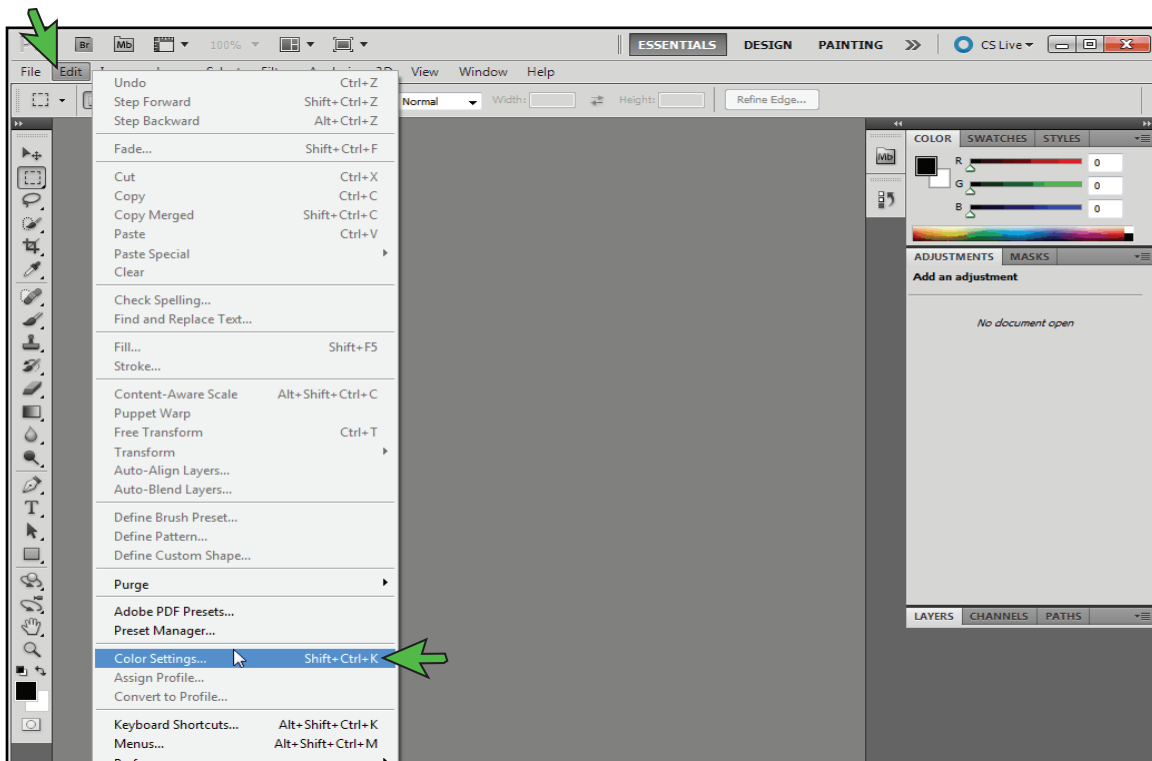


FIGURE 1

## ChromaBlast: Epson WorkForce 30

### Setup and Print Guide: Photoshop CS5 (cont'd 2:5)

2. The Color Settings window should now be open (see *FIGURE 2*). Match your settings to the ones shown below:

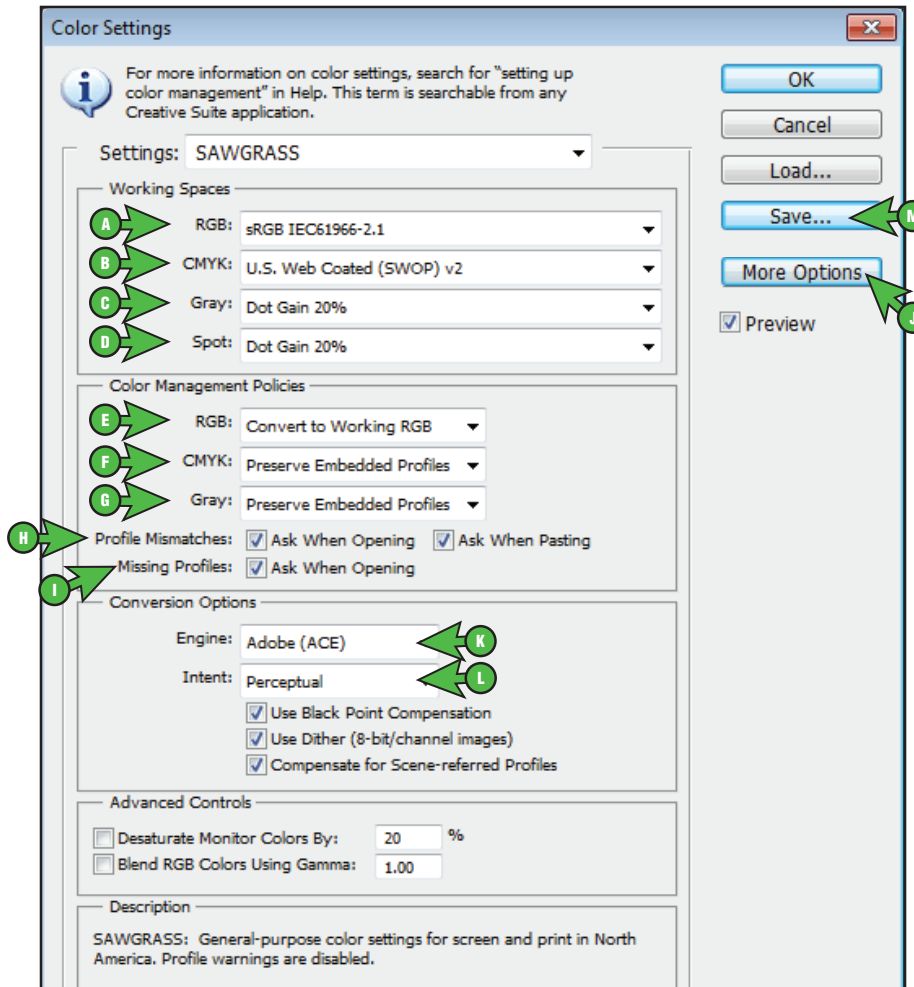


FIGURE 2

- |   |  |
|---|--|
| <ul style="list-style-type: none"> <li>A. RGB: <b>sRGB IEC61966-2.1</b></li> <li>B. CMYK: <b>U.S. Web Coated (SWOP) v2</b></li> <li>C. Gray: <b>Dot Gain 20%</b></li> <li>D. Spot: <b>Dot Gain 20%</b></li> <li>E. RGB: <b>Convert to Working RGB</b></li> <li>F. CMYK: <b>Preserve Embedded Profiles</b></li> <li>G. Gray: <b>Preserve Embedded Profiles</b></li> <li>H. Profile Mismatches: Check <b>Ask When Opening</b> and also check <b>Ask When Pasting</b></li> </ul> | <ul style="list-style-type: none"> <li>I. Missing Profiles: Check <b>Ask When Opening</b></li> <li>J. If Conversion Options is not visible, click <b>More Options</b></li> <li>K. Engine: <b>Adobe (ACE)</b></li> <li>L. Intent: <b>Perceptual</b></li> <li>M. Once your settings match, click <b>Save</b>. This will open the Save window (see <i>FIGURE 3</i>).</li> </ul> |
|---|--|

# ChromaBlast: Epson WorkForce 30 Setup and Print Guide: Photoshop CS5 (cont'd 3:5)

NAME your new preset in the File Name field and click **Save** when complete.

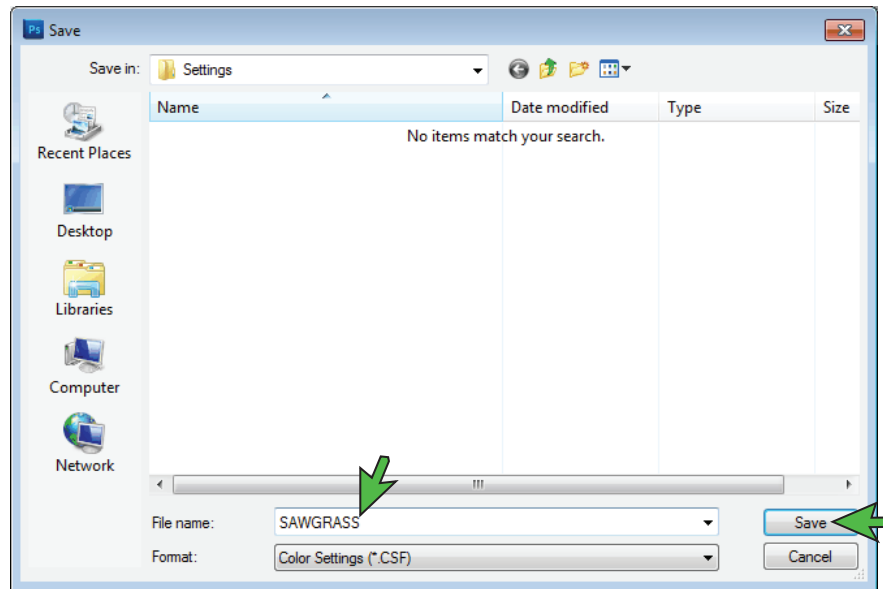


FIGURE 3

The Photoshop RGB Working Space is now set.

3. When opening images in Photoshop, you may encounter an Embedded Profile Mismatch warning. In this instance, select the radio button **Convert document's colors to the working space** and click **OK** to continue (see FIGURE 4).

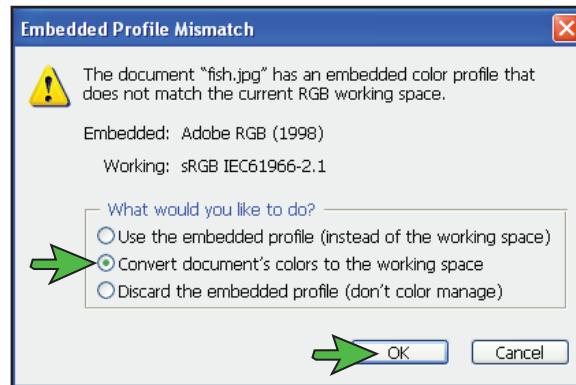


FIGURE 4

**NOTE:** Always choose to use or convert to sRGB IEC61966-2.1.

# ChromaBlast: Epson WorkForce 30

## Setup and Print Guide: Photoshop CS5 (cont'd 4:5)

- Once an image has been opened in Photoshop, you will need to ensure that RGB color mode has been selected. In the menu bar, click **Image > Mode > RGB Color**. A check mark should now be visible beside **RGB Color** (see *FIGURE 5*).

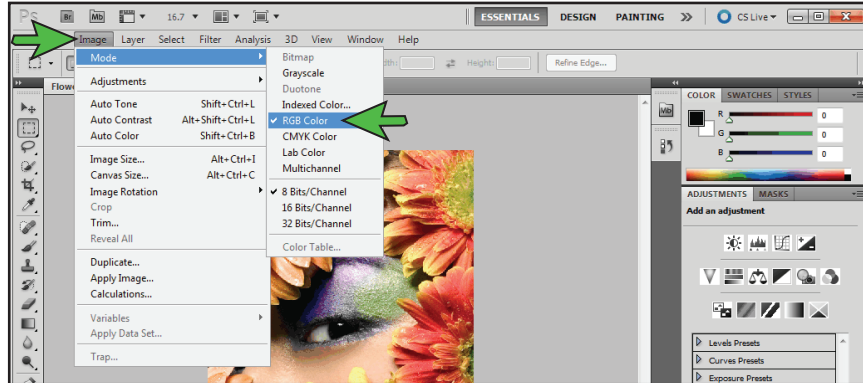


FIGURE 5

## Printing from Photoshop with ChromaBlast WorkForce 30

Begin by opening an image in Photoshop. In the menu bar, click **File > Print**. This will open the Print window (see *FIGURE 6*). Match your settings to the ones shown below:

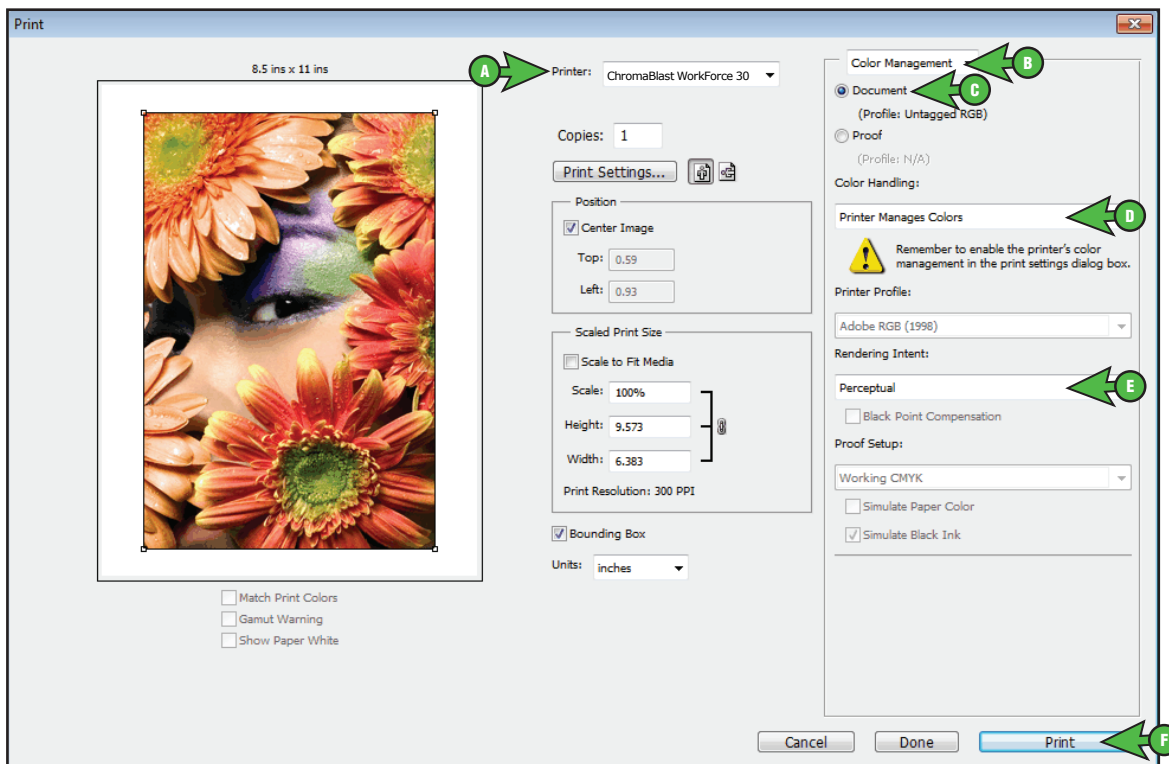


FIGURE 6

- Click the drop-down arrow [▼] and select your **ChromaBlast WorkForce 30**
- Click the drop-down arrow [▼] and select **Color Management**
- Select the radio button [●] for **Document**

## ChromaBlast: Epson WorkForce 30 Setup and Print Guide: Photoshop CS5 (cont'd 5:5)

- D. Click the drop-down arrow [▼] and select **Printer Manages Colors**
- E. Click the drop-down arrow [▼] and select **Perceptual**
- F. Click **Print** when you have entered the correct settings. This will open the Print window (see FIGURE 7).

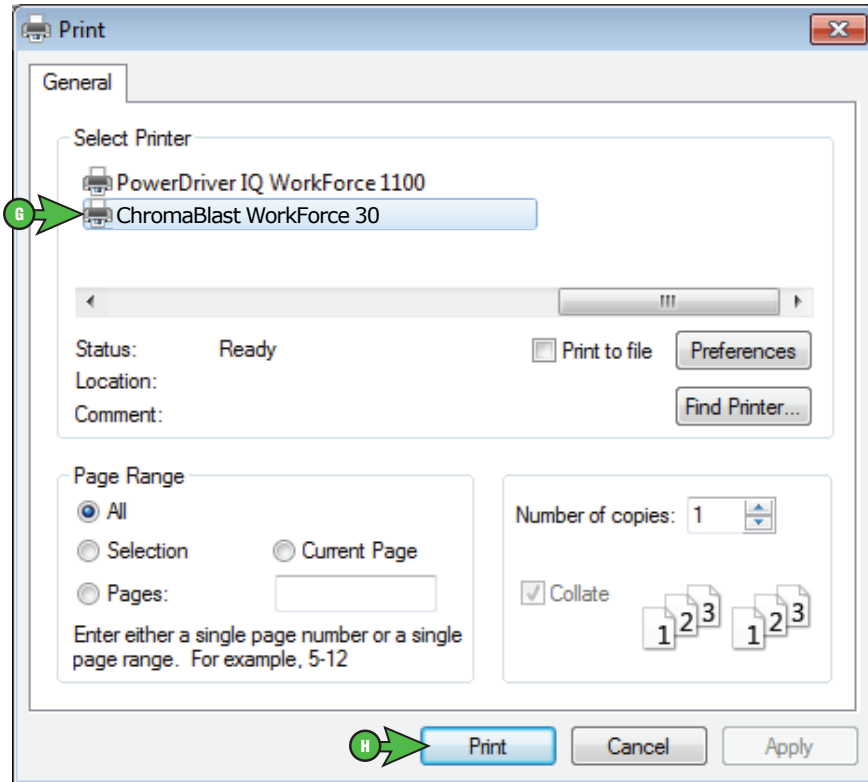


FIGURE 7

- G. Select printer **ChromaBlast WorkForce 30**
- H. You can begin printing your image by clicking **Print**.

**Congratulations!** Photoshop CS5 setup is now complete. Remember to select ChromaBlast WorkForce 30 each time you are ready to print.

**NOTE:** For the absolute latest Information and Updates on all Products, Materials, Processes, and/or Procedures relative to all offerings by or through Sawgrass Technologies, Inc., please refer to our Website: [www.sawgrassink.com](http://www.sawgrassink.com)