

## Configuration Guide – ChromaBlast-R GX 7000 – Windows 7

**NOTE:** Your screens and menus may differ depending on the version of software and operating system you are using. However, the settings will be the same.

To obtain the desired results from your ChromaBlast-R GX7000 system, you need to adjust certain options in your ChromaBlast-R virtual printer driver. Selecting the correct size paper or substrate is just one such option. This document describes the adjustment options available within the driver, and the steps you should follow to modify them to fit your job requirements.

The printing preferences available to you are organized into five different groups, all accessible in a single window, or screen. This window is titled **Printing Preferences**, and the groups are **Paper Configuration**, **Driver Configuration**, **Resources**, **Utilities** and **Color Options**.

1. With your computer on, and the Windows 7 operating system ready, click the spherical **Windows Start** icon located in the lower left corner of your monitor. From the menu that opens when you click **Start**, select the **Devices and Printers** option to launch the *Devices and Printers* menu. The ChromaBlast GX 7000 driver should be one of the devices listed under the **Printers and Faxes** menu. (Note: If this menu is collapsed such that you see no devices listed, double-click on it, or click on the solid arrow to its left, to expand it). If you do not see the ChromaBlast GX 7000 driver listed, please refer to your installation guide. There might have been an error during installation, in which case you will need to reinstall the driver.
2. **Right-click** on the **ChromaBlast GX 7000** driver. In the drop-down menu that opens when you right-click on the driver, click on **Printing Preferences**. The **ChromaBlast GX7000 Printing Preferences** window will open. There are three tabs on this window: **Layout**, **Paper/Quality** and **Virtual Printer Driver**.
3. The **Virtual Printer Driver** tab is selected by default. If not, click on it to select it. Here you will see the five groups from which you are going to select the options that enable you to modify the various parameters appropriate for your job. You do not need to modify every parameter, but only those demanded by your application. These options and parameters are described below.

### Paper Configuration Group

- a. **Paper Size** – Click on the down arrow to see a list of the available paper sizes, and select the size suitable for your application. Available US sizes are **Letter** and **11 x 17** inches. Available European sizes are **A3** and **A4**.
- b. **Copies** – Select the number of copies you want to print by either entering this number manually or by clicking on the Up and Down arrows in this field.

### Driver Configuration Group

- a. **OEM Printer** – Click on the down arrow at the right of the field directly below this caption and select the **Ricoh GelSprinter GX 7000** printer from the drop-down menu.

### Resources Group

- a. **Help** – Select this option to view information on optimizing vector and raster (bitmap) images; a brief explanation of color options and ColorSure (under **Driver Settings**); a link to the Sawgrass Technical Support page (in the **About** tab), and specific information on the driver, including the version level.
- b. **Documentation** – This option provides direct access to the documentation available for this product.
- c. **Register** – Select this option to register your ChromaBlast-R driver if you have bypassed the installation prompts during installation. Once you register your product, this option becomes inactive and it is grayed out. Registration is important to gain access to the full capabilities of the program and receive update notifications.
- d. **Sawgrassink.com** – This is a direct link to Sawgrass Technologies web site (home page).

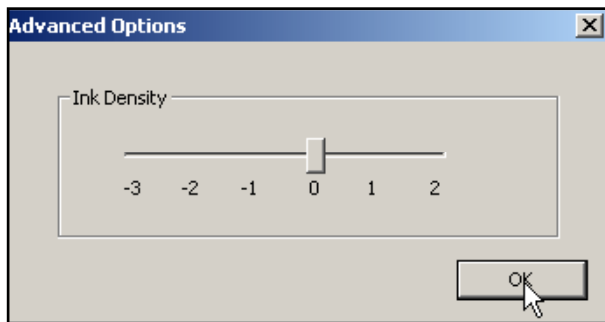
### Utilities Group

- a. **Nozzle Check** – Select this option to print a test pattern to verify that all of the print-head nozzles are firing
- b. **Head Cleaning** – If the nozzle check yields too many missing nozzles, select this option to clear obstructions from the clogged nozzles.
- c. **Print Primary** – Select this option to print a CMYK primary color chart of the colors in use by the printer (four small square blocks for this four-color printer).
- d. **File Spooler** – The file spooler is an application that enables you to select a printer-ready (.prn) file--such as one that you have previously stored by using the **Print to file** command from your application—and either print it to your printer at a later time, a different printer of the same type, or even send it to Sawgrass' technical support for analysis.

### Color Options Group

This group provides you with specific color-control choices. These choices, which you select by moving a slide bar, are **No Color Management**, **Graphics and Photographic**, **ColorSure**, **Advanced Settings**, **Mirror**, **Custom Palette**, and **Print Palette**.

- a. **No Color Management** – Select this option when you do not want to apply any color profiles (i.e., color controls) to the image being output to the printer. Note that if ColorSure is enabled, ColorSure effects will still apply, even with color management disabled.
- b. **Graphics** – Select this option when your image consists mainly of vector art (text and graphics), and you want to increase color intensity.
- c. **Photographic** – Select this option when printing raster images (photographs) for the best overall balance of color throughout the tonal range.
- d. **ColorSure** – This toggle switch enables you to turn ColorSure on or off. ColorSure is a built-in program that ensures accurate, repeatable reproduction of selected colors in your artwork. ColorSure works in conjunction with the **Custom Palette** and **Print Palette** functions, ensuring that a selected color will always print exactly the same way, time after time. Check the box to activate **ColorSure**; un-check it to disable it.
- e. **Advanced Settings** – This option enables you to adjust ink-density (see illustration below). If too much ink is being laid down, or your image is not drying quickly enough, move the slider to the left (in the direction of the negative values). Conversely, if your graphic is not saturated enough, increase the density value by moving the slider to the right. The default value is zero.

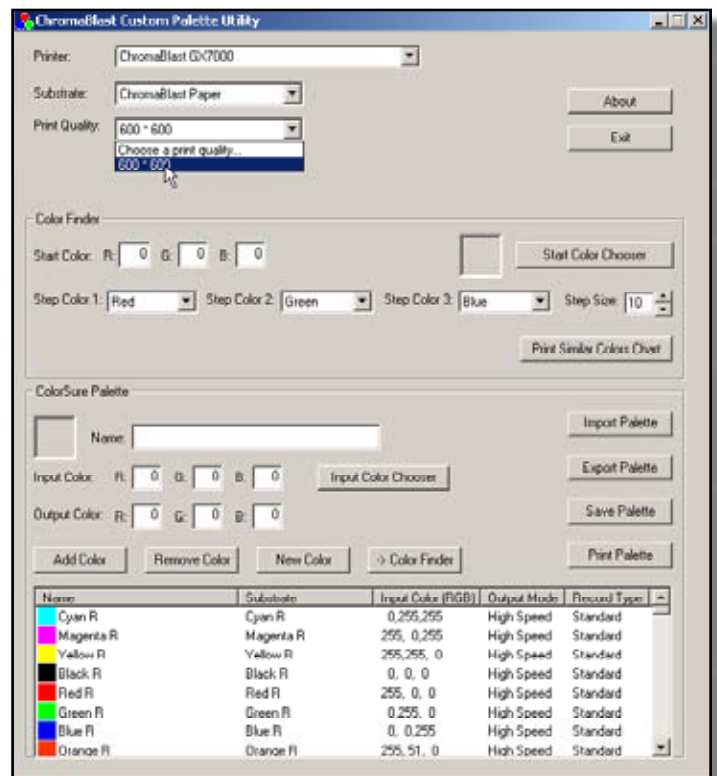


- f. **Mirror** – When transferring an image from the printed paper to the final substrate, the image must be inverted on paper so it can transfer correctly. Most graphics applications offer a mirroring option. If your image is mirrored in your application, do not select this option. However, if you prefer to have the image mirrored at this stage, select this option by checking the box.
- g. **Custom Palette** – Select this option to add new spot colors to an existing palette and to import, export or save a modified palette (see illustration at right). You begin by selecting the **Printer Model**, the **Substrate** and the **Print Quality**. The default print quality is 600 x 600 dpi. Refer to the Custom Palette documentation for more detailed information on this feature.
- h. **Print Palette** – Select this option to print the built-in color palette that you can keep for reference.

## Other Controls

These options are not part of any specific group and include, **Restore Defaults**, **OK**, **Cancel** and **Apply**.

- a. **Restore Defaults** – Select this option if, over time, you have made changes to various other options and then changed your mind. This selection will restore your options to their original, programmed values, so you can start anew with a “clean slate.” To implement the changes, which will affect both the OEM and the Sawgrass (ChromaBlast GX 7000) drivers, you must click **Apply** (or **OK**, to implement and exit this menu).
- b. **OK** – Select this option when you have made all the changes you intended to make and are ready to leave this menu window.
- c. **Cancel** – Select this option to cancel changes you have made. Unlike the **Restore Defaults** option, the **Cancel** option only overrides the changes you made during this session. Any other changes you made in previous sessions, or for previous jobs, will remain in effect until you change them or click **Restore Defaults**.
- d. **Apply** – Select this option to implement the changes you have made. Clicking **OK** will have the same effect.



Custom Palette Utility Menu