

NOTE: Your screens and menus may differ depending on the version of software and operating system you are using. However, the settings will be the same.

Part I – Epson Printer Driver Installation

1.) Start your computer, wait until Windows is fully operational, and then download the **Epson WorkForce 1100** driver from the Epson site at www.epson.com.

The direct link to the drivers is:

http://www.epson.com/cgi-bin/Store/support/supDetail.jsp?BV_US_eBVCookie=yes&oid=130785&product=63084675&infoType=Downloads&platform=All

If you are unable to activate this direct link, proceed as follows:

a.) Visit the Epson website at www.epson.com and follow the links to **North America > USA > Drivers & Support > Printers > Ink Jet**.

b.) Click on the **Epson WorkForce 1100** under the **Epson WorkForce™ Series** listing (see Figure 1 at right).

c.) Click on **Drivers & Downloads > Windows** in the window that opens (see Figure 2 at right).

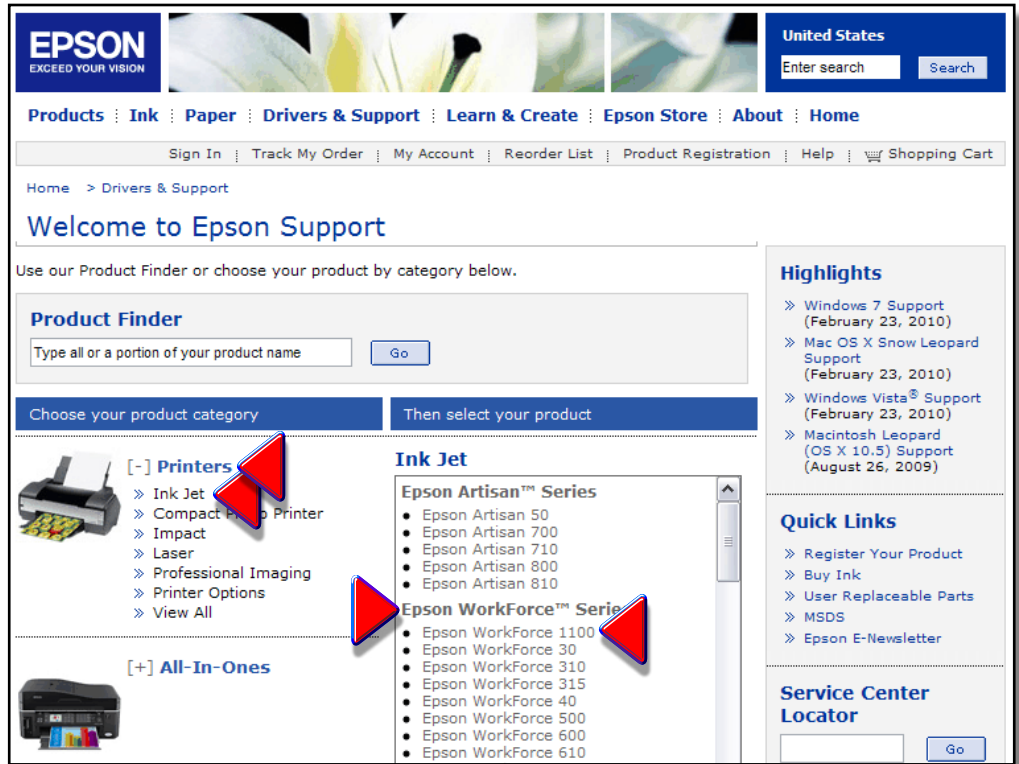


Figure 1

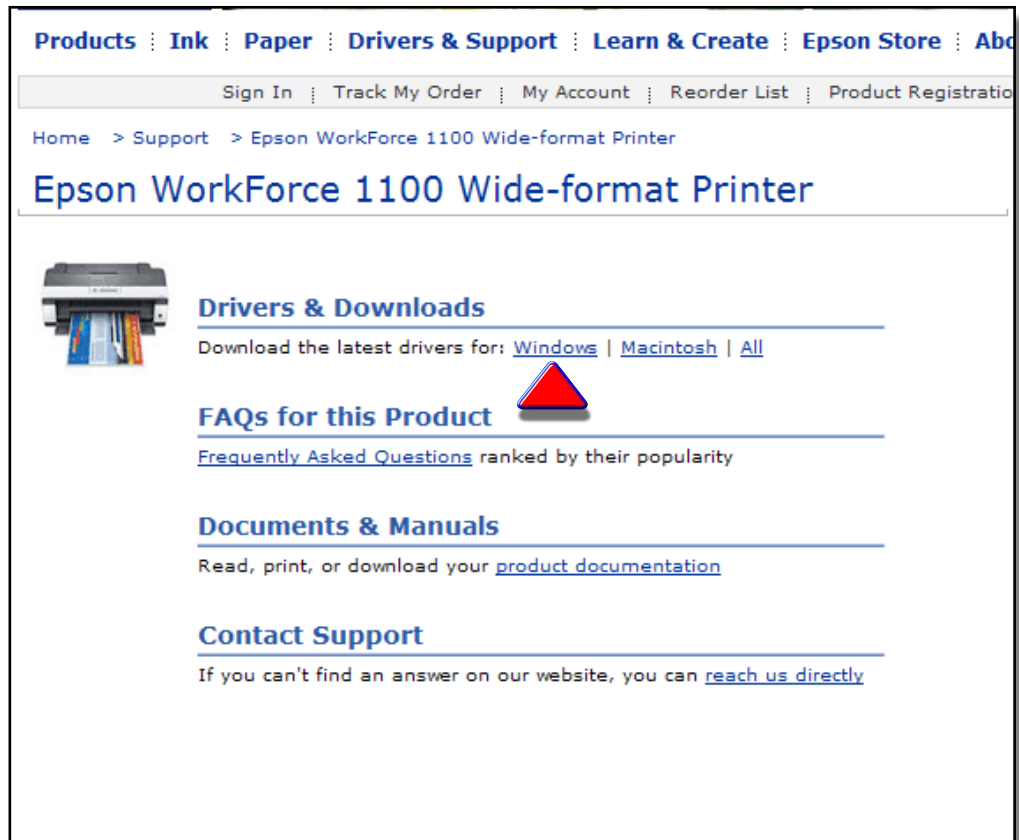


Figure 2

ink. differently.® is a Registered Trademark, and ChromaBlast and Sawgrass are Trademarks of Sawgrass Technologies, Inc. Ricoh, Aficio, and Gelsprinter are Trademarks of Ricoh Corporation.

d.) Click on the driver for your operating system to expand the menu and access the **Download** option (Figure 3).

e.) Click on **Download Now**.

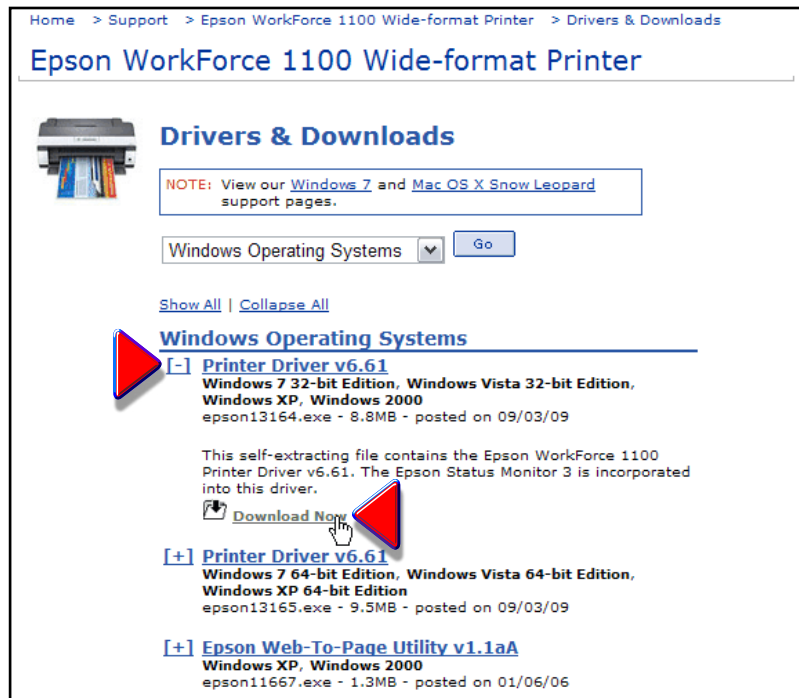


Figure 3

f.) Click one of the two radio buttons according to your preference (entering your e-mail address is optional) (see Figure 4).

g.) Click **Accept**. A download window with the name of the file (epson13164.exe if you have selected the driver for Windows 7, 32-bit OS) will open.

h.) Click on **Save File** to save the file to your desktop.

i.) Double-click on the file you have just saved to your desktop and follow the screen prompts to install the driver.

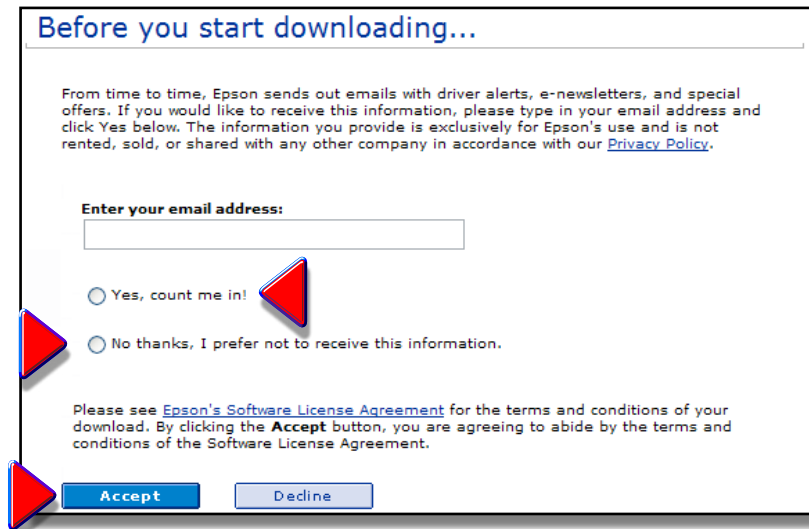


Figure 4

Part 2 – ArTainium UV+ ICC Profile Installation & Registration

1.) Follow the link and download the **ArTainium UV+ ICC Profile**: (see Figure 1).

<http://www.sawgrassink.com/v.php?pg=668>

Double-click on your printer in the printer list to begin the download. Once the file has finished downloading, click **Run** to begin the installation.



Figure 1

2.) When the WF1100 Setup screen appears, click **Next**. (see Figure 2)

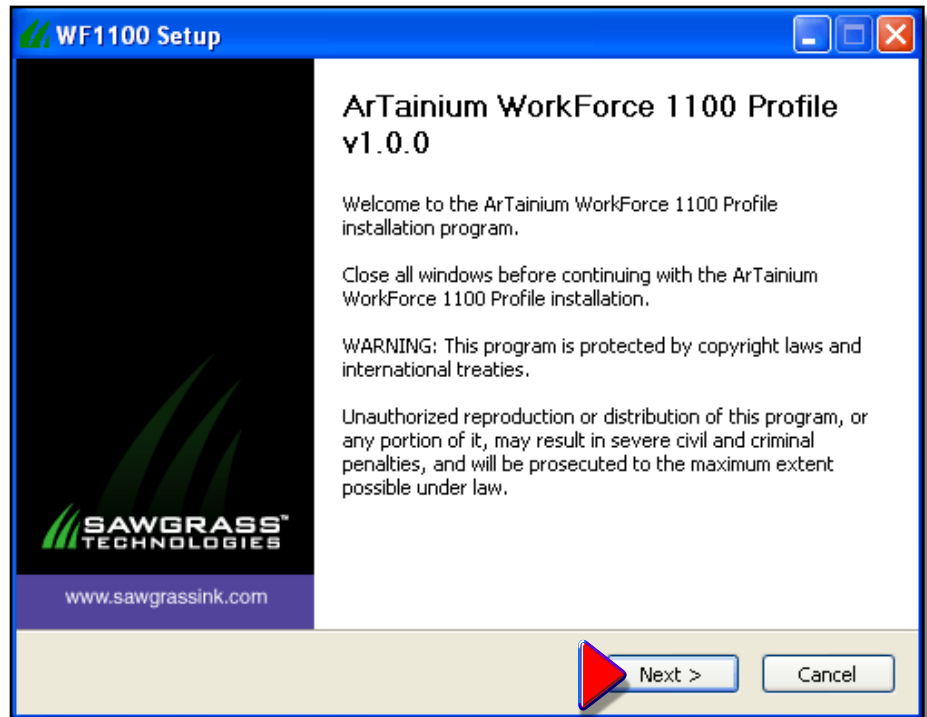


Figure 2

3.) If you agree with the **License Agreement**, click **I Agree** (see Figure 3).

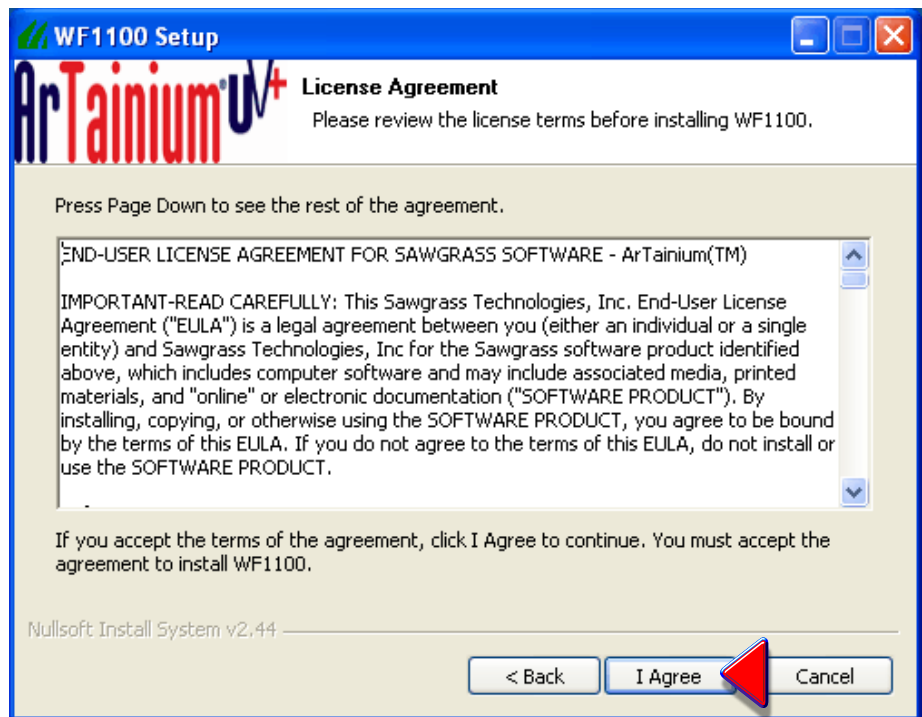


Figure 3

4.) Click **Install** to continue (see Figure 4).

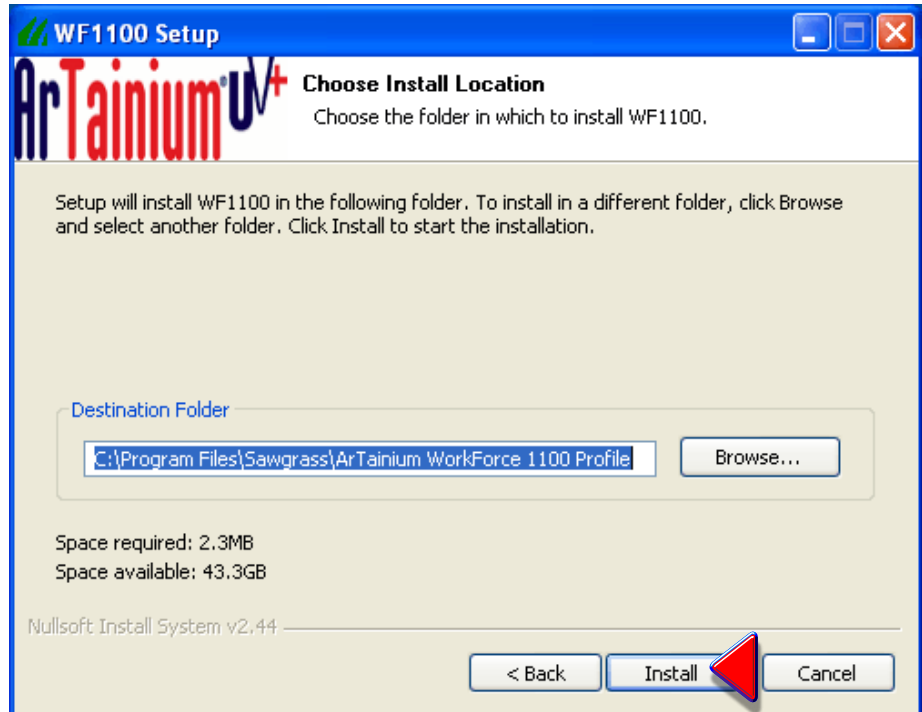


Figure 4

5.) You will be asked to Register your product in order for the installation to complete. Click Yes to continue (see Figure 5).

NOTE: Registration is required in order to take full advantage of the advanced features in the ArTainium ICC Profiles.

6.) The **ArTainium WF1100 Profile Registration** screen will appear (see Figure 6). You will use your **Product ID** to register your product. A Registration Code can be obtained in any of the following ways:

a. **On-line:** Receive your Registration Code via E-mail.

b. **Phone:** Contact Sawgrass Technologies, Inc. directly at **Phone: (888) 253-1679**

c. **Fax:** Send in a form and receive and phone call with your Code. **Fax: (843) 849-3847**

NOTE: You must have a separate Registration Code for every machine for which the “Artainium ICC Profile” is installed.

7.) The following instructions will show how to register On-line. Start by selecting **Click Here to Obtain Registration Code** (see Figure 6).

8.) The **Product Registration Web Page** will appear. Complete the requested information on the form and click continue (see Figure 7).

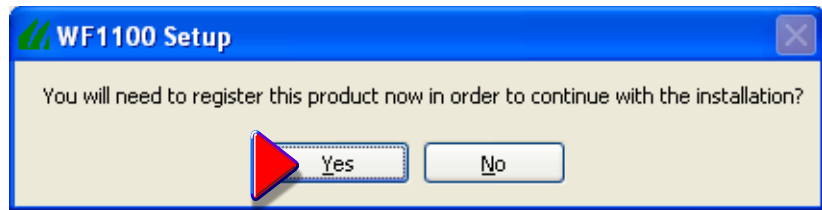


Figure 5

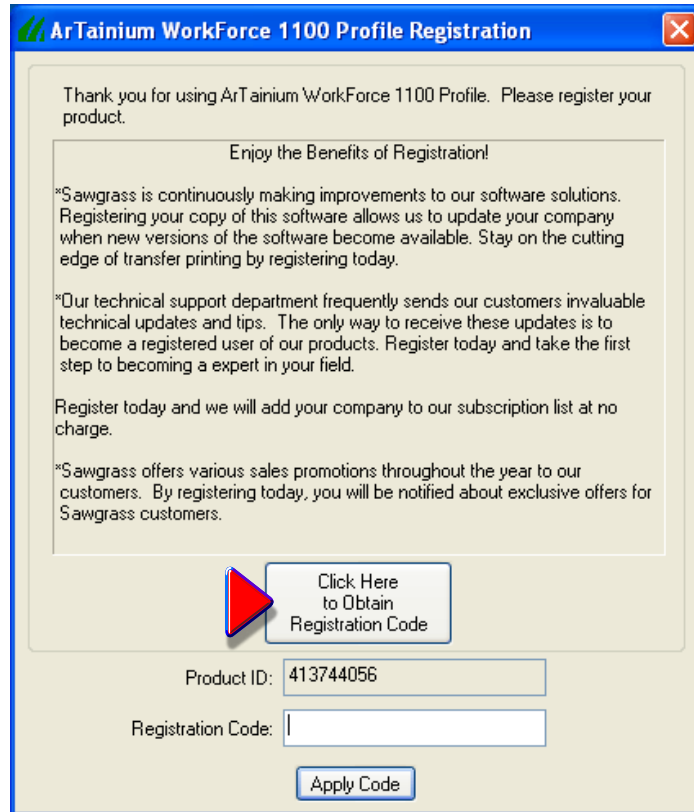


Figure 6

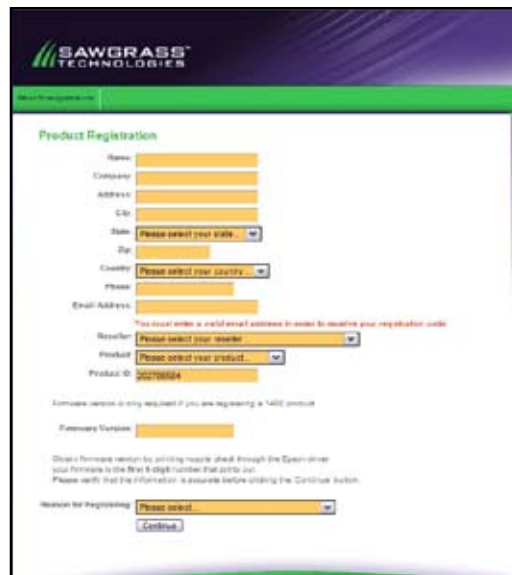


Figure 7

9.) Type in the **Registration Code** you receive and click **Apply** (see Figure 8).

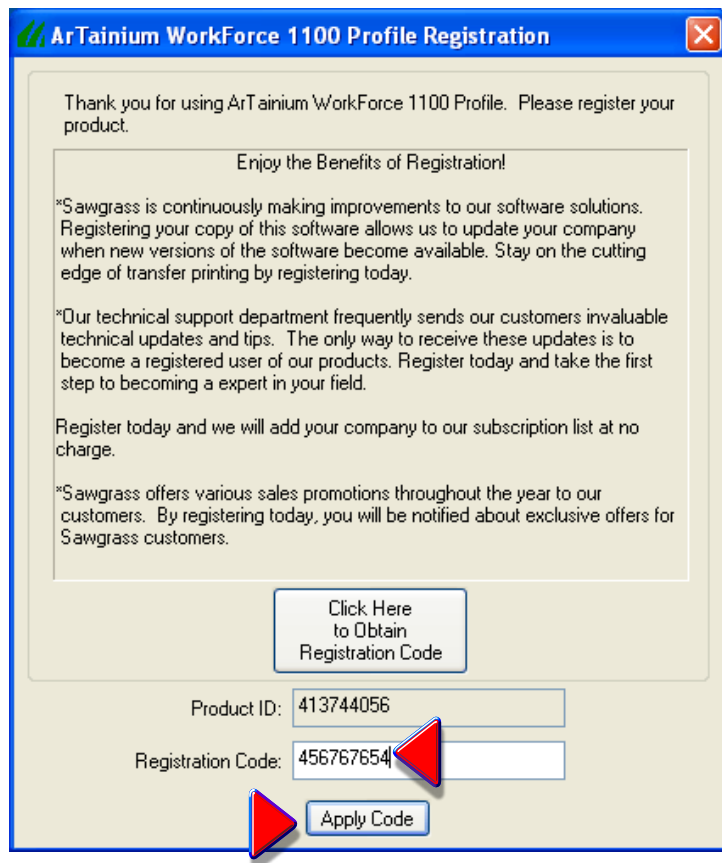


Figure 8

10.) Click **OK** to complete registration (see Figure 9).



Figure 9

11.) Installation is now complete. Click **Close** to finish the setup (see Figure 10).

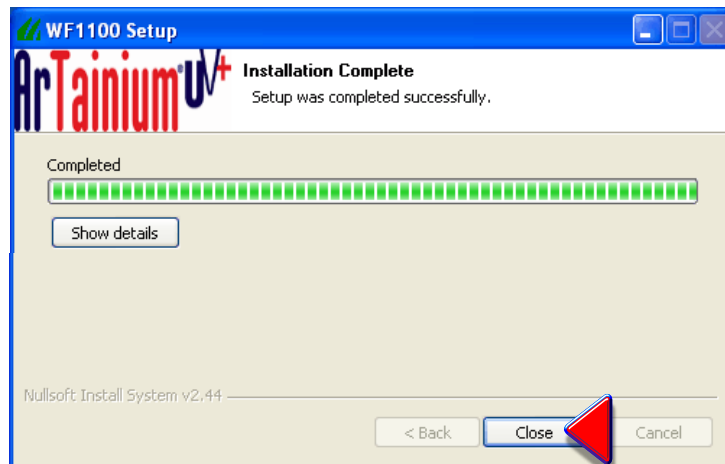


Figure 10

Now that the **Epson Printer Driver** and **ArTainium UV+ ICC Profile** have been installed, please continue to the **Configuration Guide** for setting up the **Epson Printer Driver** to print using the **ArTainium UV+ ICC Profile**.