

# Epson WorkForce 1100 Configuration Guide

The following instructions will demonstrate how to configure the Epson WorkForce 1100 printer driver to print using the ArTainium WF1100 WinProfile.

- 1.) To begin, click your **Start** icon and select **Devices and Printers** (see FIGURE 1). If you are using an older version of Microsoft Windows, you will instead select Printers and Faxes.

**NOTE:** You can also access the Epson WorkForce 1100 Printing Preferences window by clicking “Print Properties” or “Print Preferences” within the print window of your Graphic Design Software.

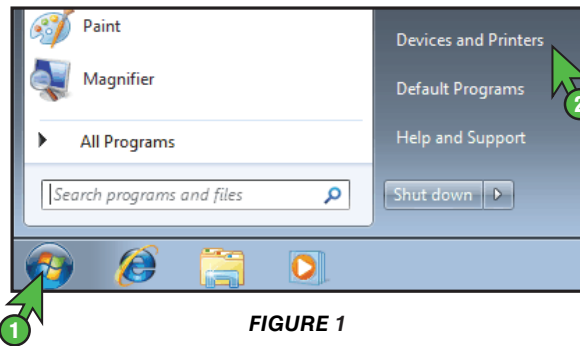


FIGURE 1

- 2.) In the Devices and Printers folder, right-click on the **Epson WorkForce 1100 Series** printer driver icon and select **Printing Preferences** (see FIGURE 2). This will open the Printing Preferences window (see FIGURE 3).

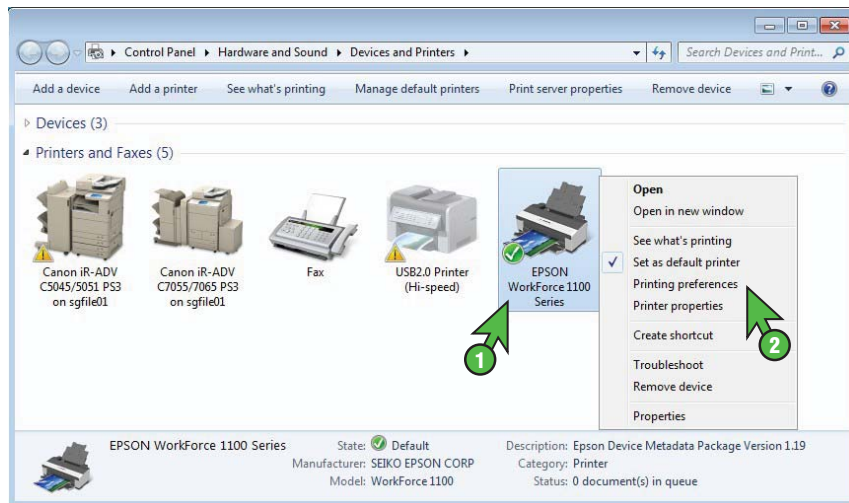
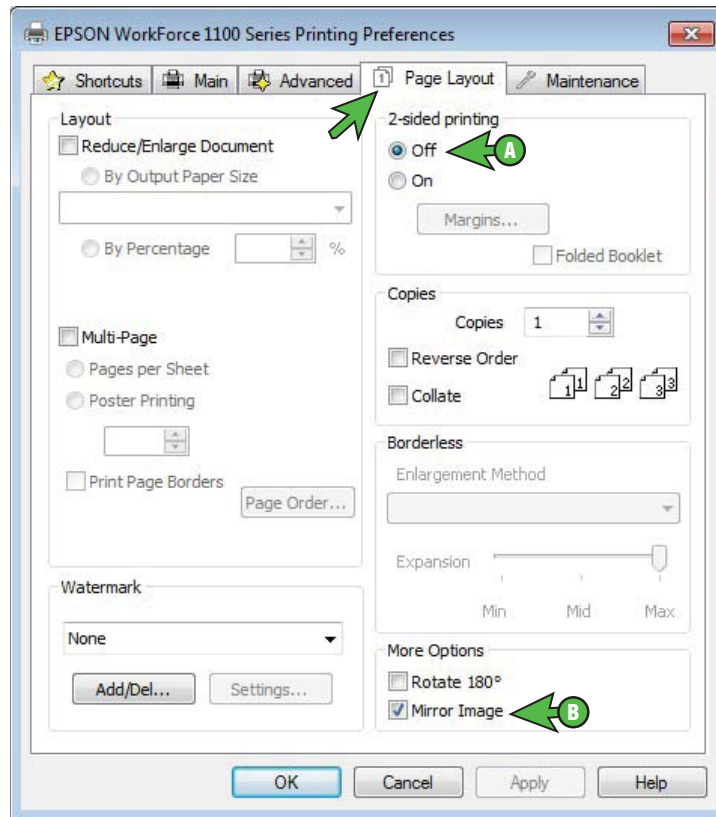


FIGURE 2

## ArTainium UV+: Epson WorkForce 1100 Configuration Guide

- 3.) In the Epson WorkForce 1100 Series Printing Preferences window, click the **Page Layout** tab and match your settings to those shown below: (see FIGURE 3)



**FIGURE 3**

- A. 2-sided printing: **Off**
- B. More Options: **Mirror Image**

## ArTainium UV+: Epson WorkForce 1100 Configuration Guide

- 4.) In the Epson WorkForce 1100 Series Printing Preferences window, click the **Advanced** tab and match your settings to those shown below: (see FIGURE 4)

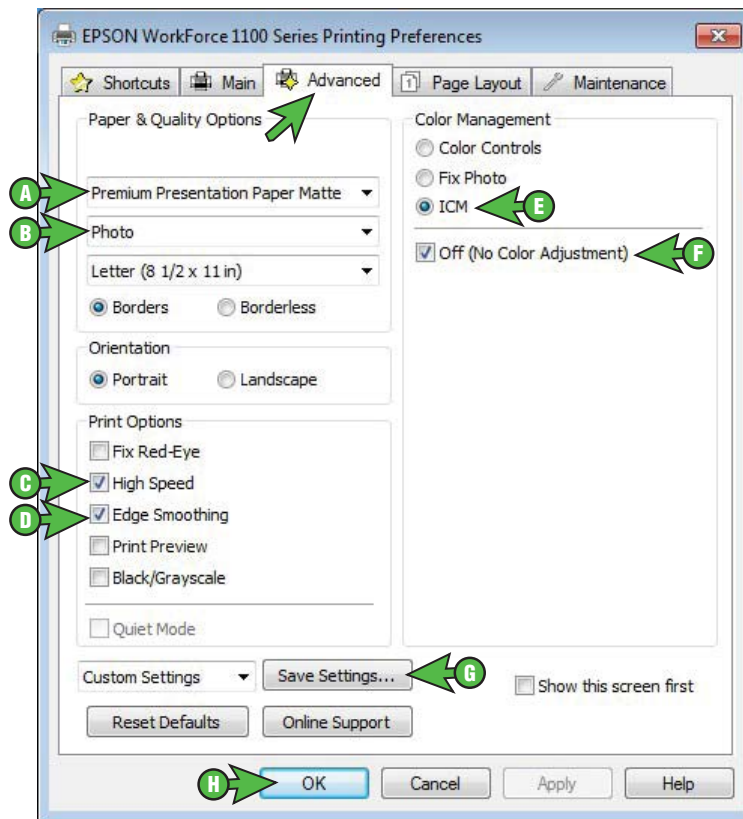


FIGURE 4

- A. Paper & Quality Options: **Premium Presentation Paper Matte**
- B. Paper & Quality Options: **Photo**
- C. Print Options: **High Speed**
- D. Print Options: **Edge Smoothing**
- E. Color Management: **ICM**
- F. Color Management: **Off (No Color Adjustment)**

# ArTainium UV+: Epson WorkForce 1100 Configuration Guide

G. **Save Settings...** Name your new setting and click **Save** (see FIGURE 5).

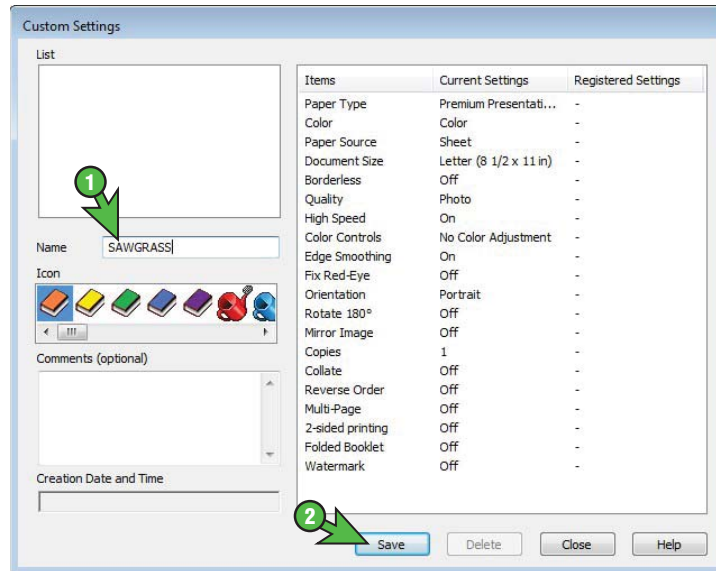


FIGURE 5

H. Click **OK** to complete the configuration (see FIGURE 4).

**Congratulations!** The ArTainium WorkForce 1100 configuration is now complete. Please proceed to the Print Setup Guide that corresponds with your printer model and graphics software.

For the absolute latest information and updates on all products, materials, processes and/or procedures relative to all offerings by or through Sawgrass Technologies, Inc., please refer to our website:

[www.sawgrassink.com](http://www.sawgrassink.com)