

Epson WorkForce 30

Setup and Print Guide: CoreIDRAW X5

NOTE: Before proceeding, please be sure you have the correct OEM driver and ArTainium ICC profile installed. For Assistance with driver installation, refer to the Installation Guide.

CoreIDRAW X5 Setup Guide

1.) Open a New Page in CoreIDRAW: (see FIGURE 1)

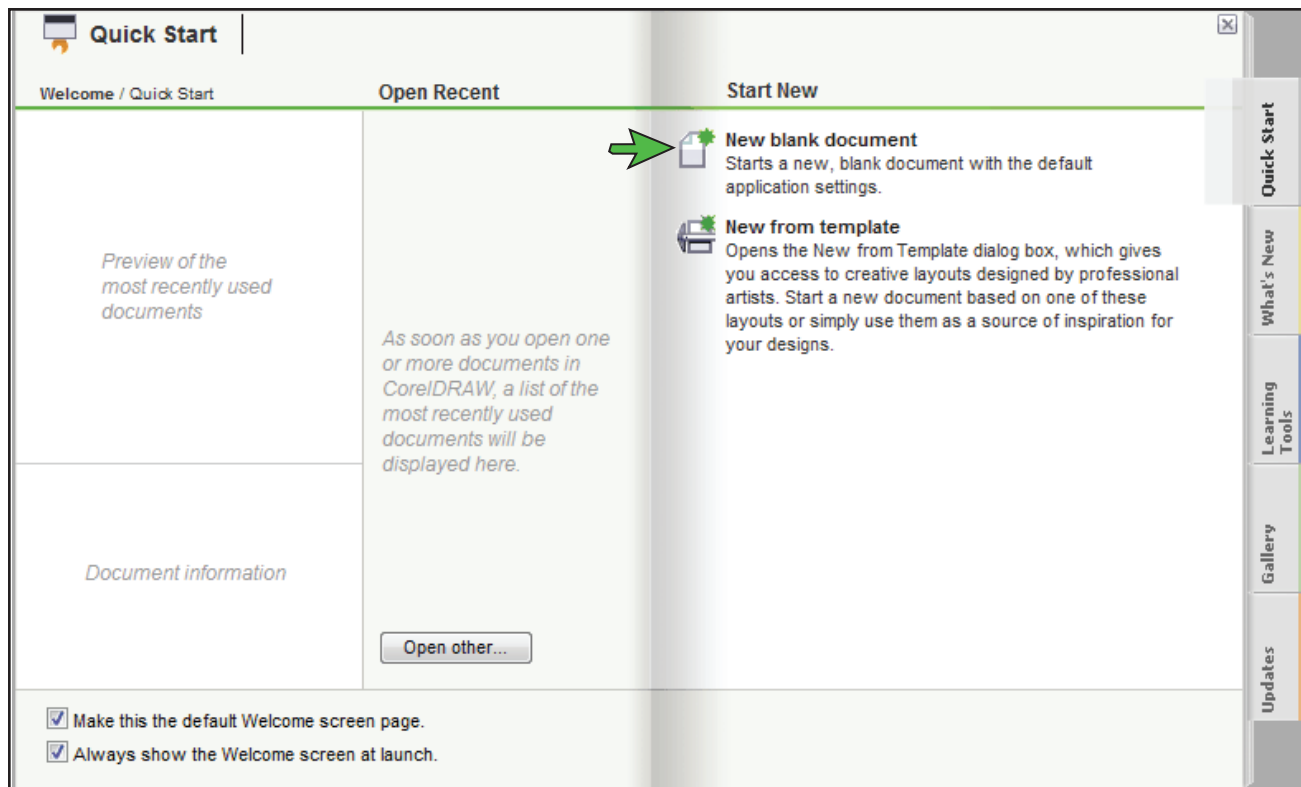


FIGURE 1

ArTainium UV+: Epson WorkForce 30 Setup and Print Guide: CoreIDRAW X5 (cont'd 2:6)

2.) Configure a New Document Workspace: (see FIGURE 2)

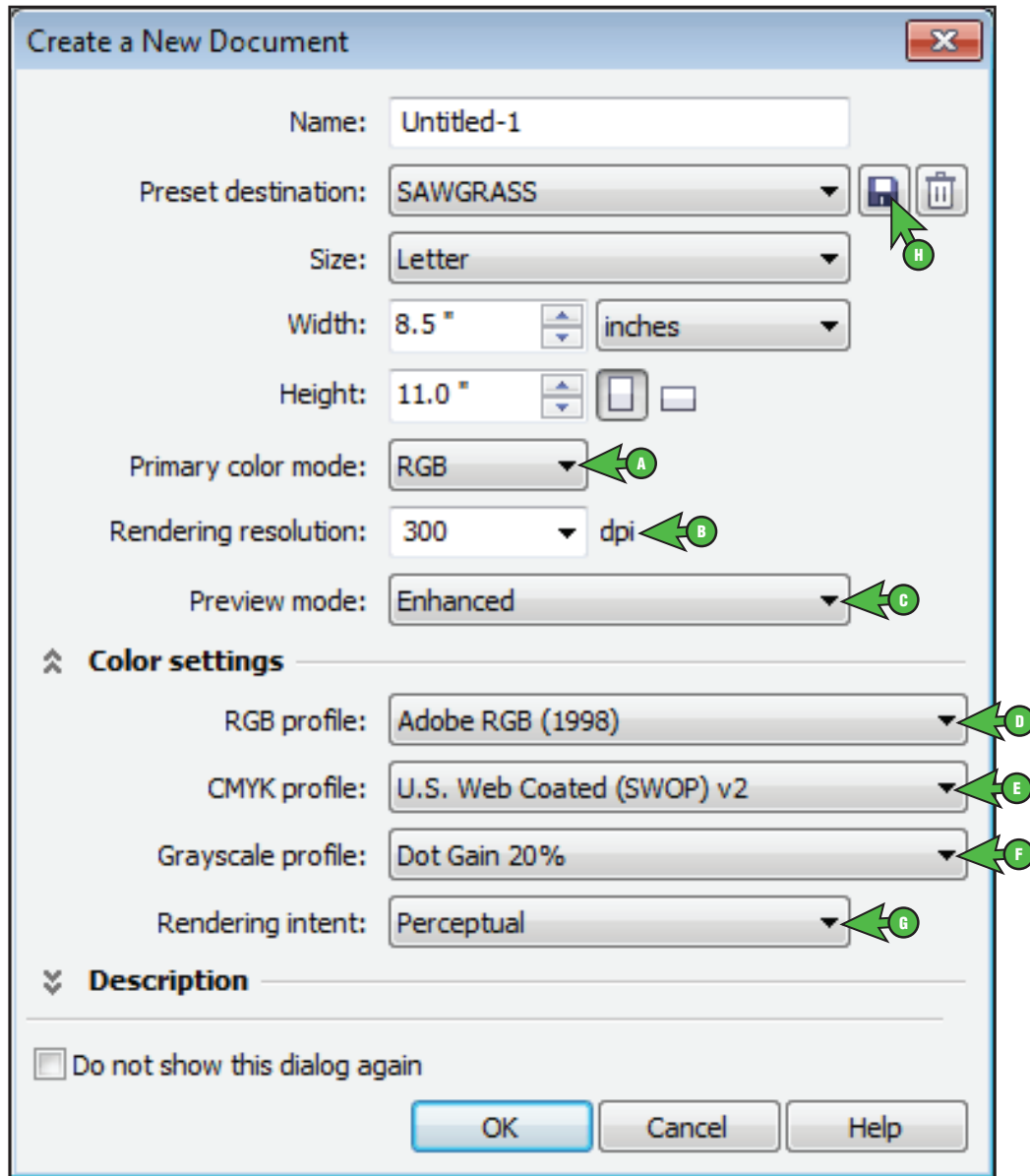


FIGURE 2

- A. Primary color mode: **RGB**
- B. Rendering resolution: **300**
- C. Preview mode: **Enhanced**
- D. RGB profile: **Adobe RGB (1998)**
- E. CMYK profile: **U.S. Web Coated (SWOP) v2**
- F. Grayscale profile: **Dot Gain 20%**
- G. Rendering intent: **Perceptual**
- H. Add Preset: **Name your new preset**

ArTainium UV+: Epson WorkForce 30

Setup and Print Guide: CoreIDRAW X5 (cont'd 3:6)

3.) In the Menu Bar, click Tools > Color Management > Default Settings: (see FIGURE 3)

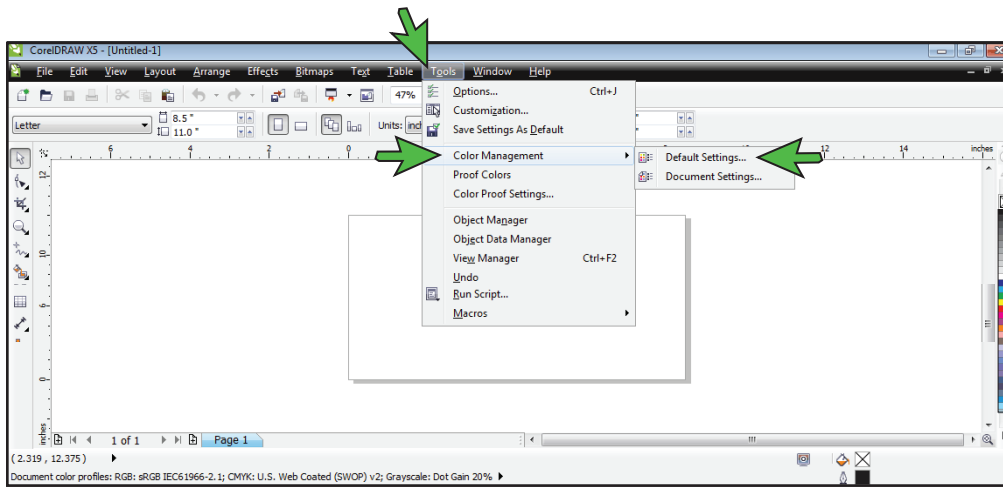


FIGURE 3

4.) The Default Color Management Settings window should now be open. Match your settings to the ones shown below: (see FIGURE 4)

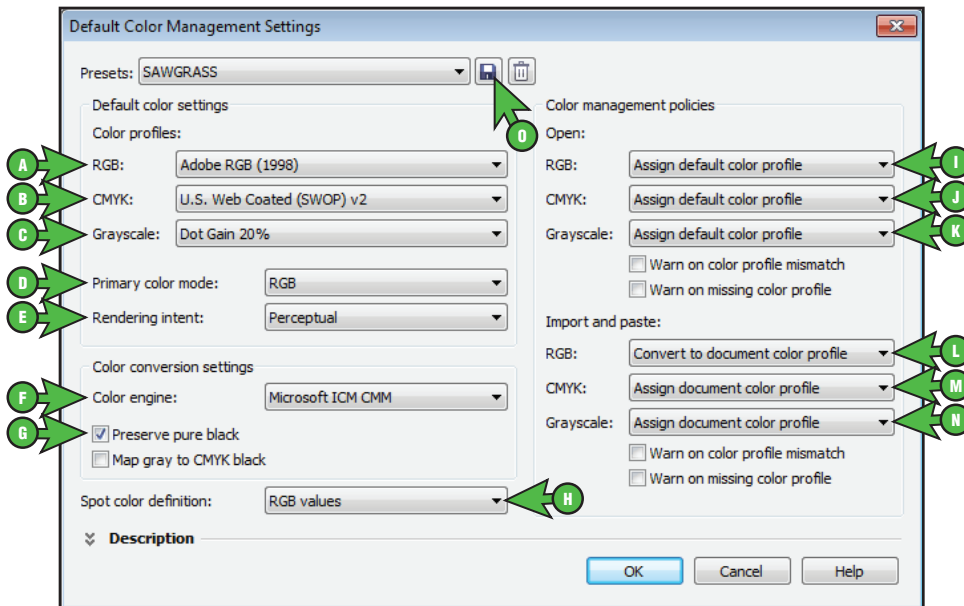


FIGURE 4

- | | |
|---|--|
| <p>A. RGB: Adobe RGB (1998)</p> <p>B. CMYK: U.S. Web Coated (SWOP) v2</p> <p>C. Grayscale: Dot Gain 20%</p> <p>D. Primary color mode: RGB</p> <p>E. Rendering intent: Perceptual</p> <p>F. Color engine: Microsoft ICM CMM</p> <p>G. Check: Preserve pure black</p> <p>H. Spot color definition: RGB values</p> | <p>I. RGB: Assign default color profile</p> <p>J. CMYK: Assign default color profile</p> <p>K. Grayscale: Assign default color profile</p> <p>L. RGB: Convert to document color profile</p> <p>M. CMYK: Assign document color profile</p> <p>N. Grayscale: Assign document color profile</p> <p>O. Add Preset: Name your new preset</p> |
|---|--|

ArTainium UV+: Epson WorkForce 30 Setup and Print Guide: CoreIDRAW X5 (cont'd 4:6)

5.) In the Menu Bar, click Tools > Color Management > Document Settings: (see FIGURE 5)

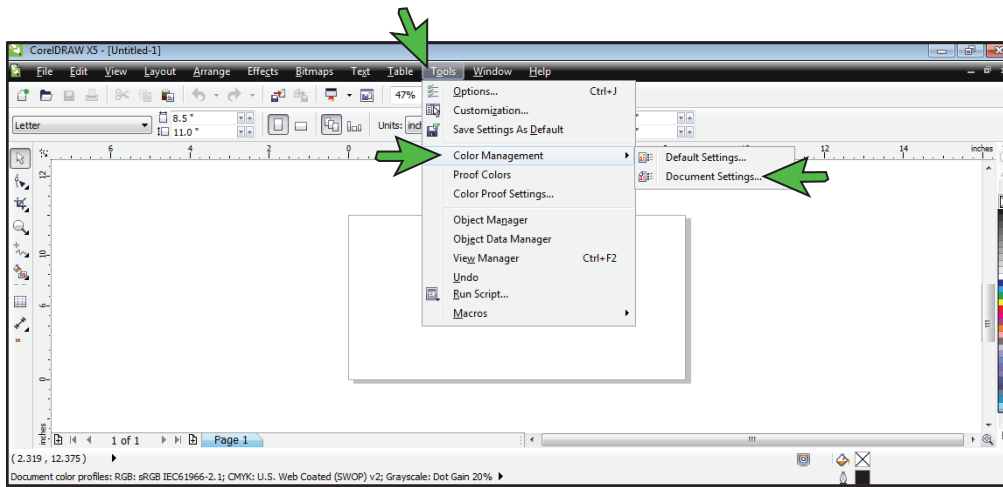


FIGURE 5

6.) The Document Color Settings window should now be open. Match your settings to the ones shown below: (see FIGURE 6)

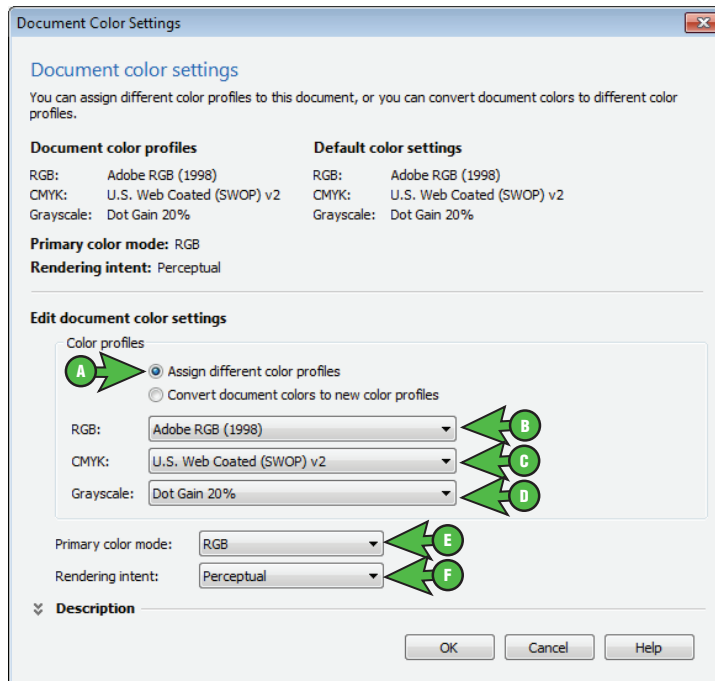


FIGURE 6

- | | |
|---|---|
| <p>A. Select the radio button: Assign different color profiles</p> <p>B. RGB: Adobe RGB (1998)</p> <p>C. CMYK: U.S. Web Coated (SWOP) v2</p> | <p>D. Grayscale: Dot Gain 20%</p> <p>E. Primary color mode: RGB</p> <p>F. Rendering intent: Perceptual</p> |
|---|---|

ArTainium UV+: Epson WorkForce 30 Setup and Print Guide: CoreIDRAW X5 (cont'd 5:6)

Printing from CoreIDRAW with Epson WorkForce 30 Series

- 7.) Now that you have adjusted the Color Management settings, you are ready to print. Begin by opening an image in CoreIDRAW. In the Menu Bar, click **File > Print (Ctrl + P)**. This will open the **Print** window. Match your settings to the ones shown below: (see *FIGURE 7*)

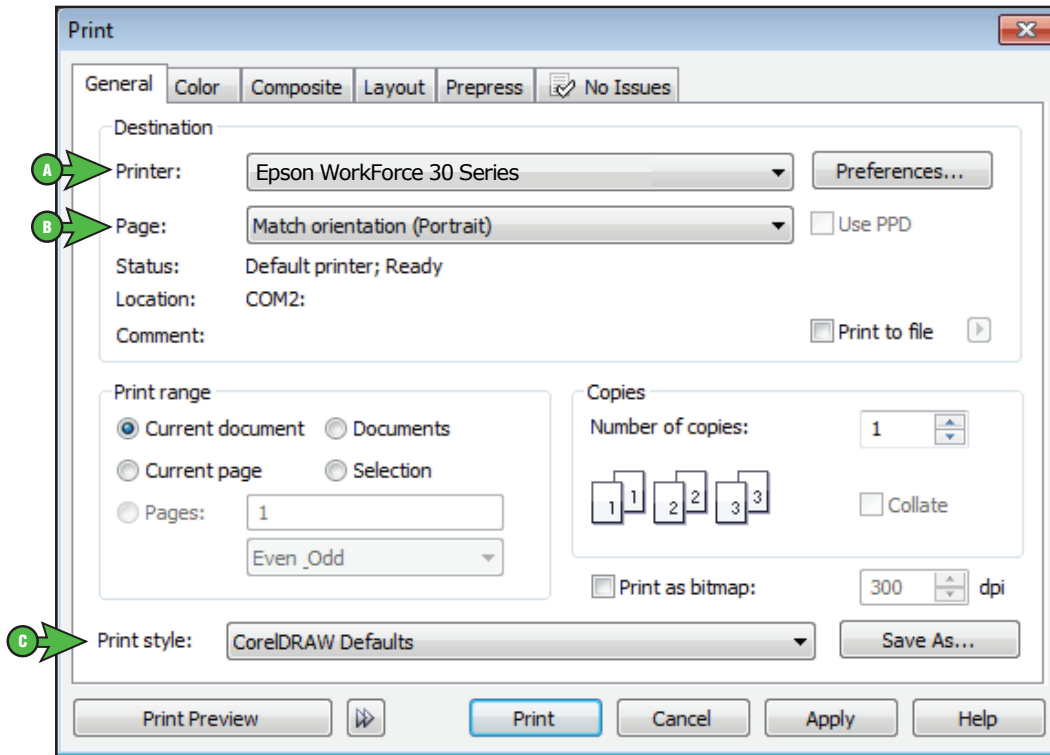


FIGURE 7

- A. Printer: **Epson WorkForce 30 Series**
- B. Page: **Match orientation (Portrait)**
- C. Print style: **CoreIDRAW Defaults**

ArTainium UV+: Epson WorkForce 30 Setup and Print Guide: CoreIDRAW X5 (cont'd 6:6)

8.) In the Print window, click the Color tab and match your settings to the ones shown below: (see FIGURE 8)

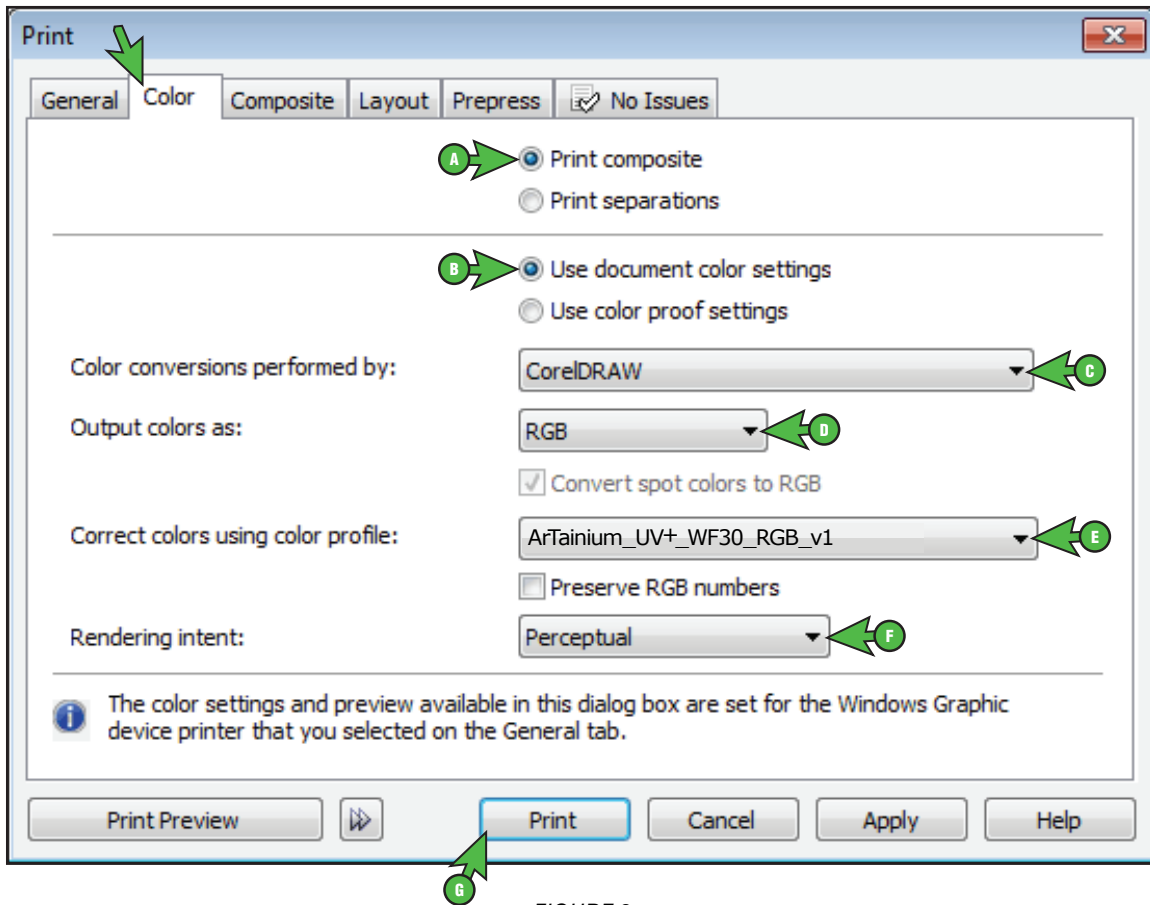


FIGURE 8

- A. Select the radio button: **Print composite**
- B. Select the radio button: **Use document color settings**
- C. Color conversions performed by: **CoreIDRAW**
- D. Output colors as: **RGB**
- E. Correct colors using color profile: **ArTainium_UV+_WF30_RGB_v1**
- F. Rendering intent: **Perceptual**
- G. Click **Print** when you are ready to print your image.

Congratulations! CoreIDRAW X5 Setup is now complete. Remember to select Epson WorkForce 30 Series each time you are ready to print.