

EPSON WORKFORCE 1100 PRINTER

Photoshop's color space needs to be set to the working space from which the ArTainium ICC Profile was created. This then allows for a more accurate screen display of your images. The accuracy of the displayed image on your monitor will highly be dependent on the quality of your monitor and more important a calibrated monitor ICC profile. Photoshop's Adobe Gamma will allow you to calibrate and save an ICC profile for your monitor.

NOTE: Your screens and menus may differ depending on the version of software and operating system you are using. However, the settings will be the same.

ArTainium ICC Profile Setup

Begin by opening an image/blank page in Photoshop. At the top of the application click Edit > Color Settings. This will open the Color Settings window (see Figure 1).

1. Configure Color Settings: (see Figure 1)

a. Color Settings > Working Spaces > RGB > click the drop-down arrow and select Adobe RGB (1998) (see Figure 1 > a.).

b. Color Settings > Color Management Policies > Profile Mismatches > check Ask When Opening and also check Ask When Pasting (see Figure 1 > b.).

c. Color Settings > Color Management Policies > Missing Profiles > check Ask When Opening (see Figure 1 > c.).

d. Once your settings match, click Save (see Figure 1 > d.). This will open the Save window (see Figure 2). Type ArTainium WF 1100 in the File Name field (see Figure 2 > a.) and click Save when complete (see Figure 2 > b.).

The Photoshop RGB Working Space is now set.

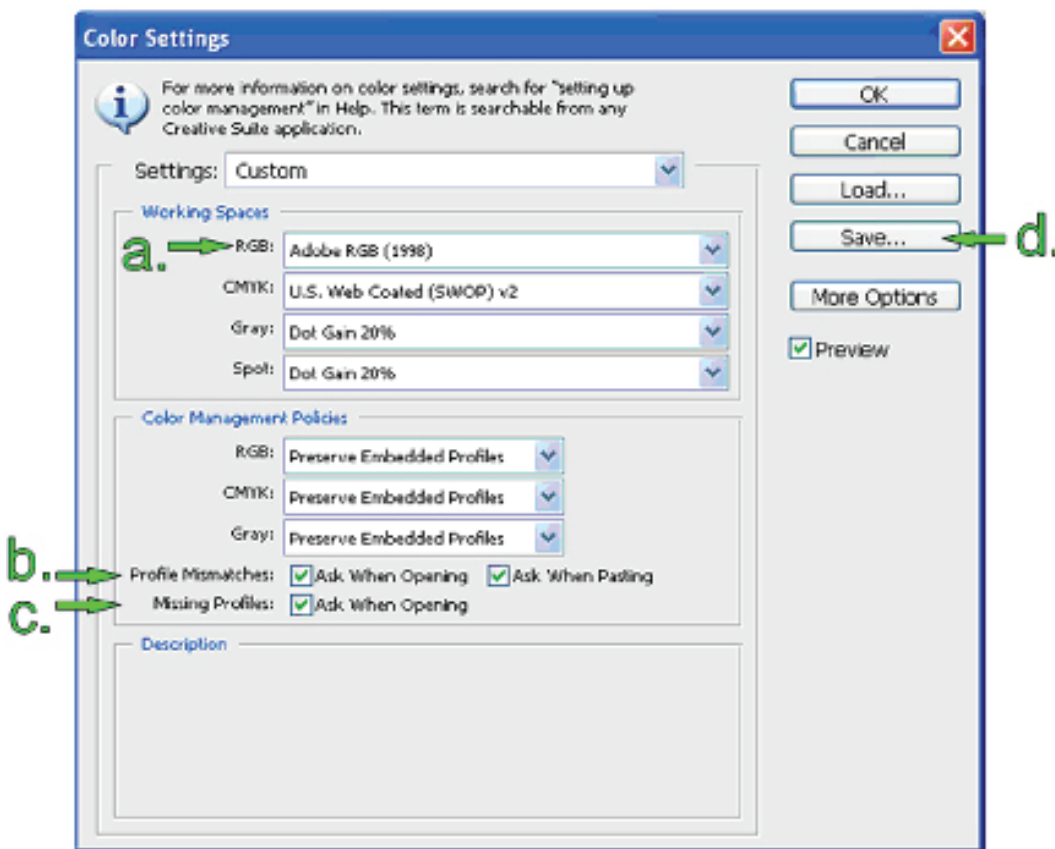


Figure 1

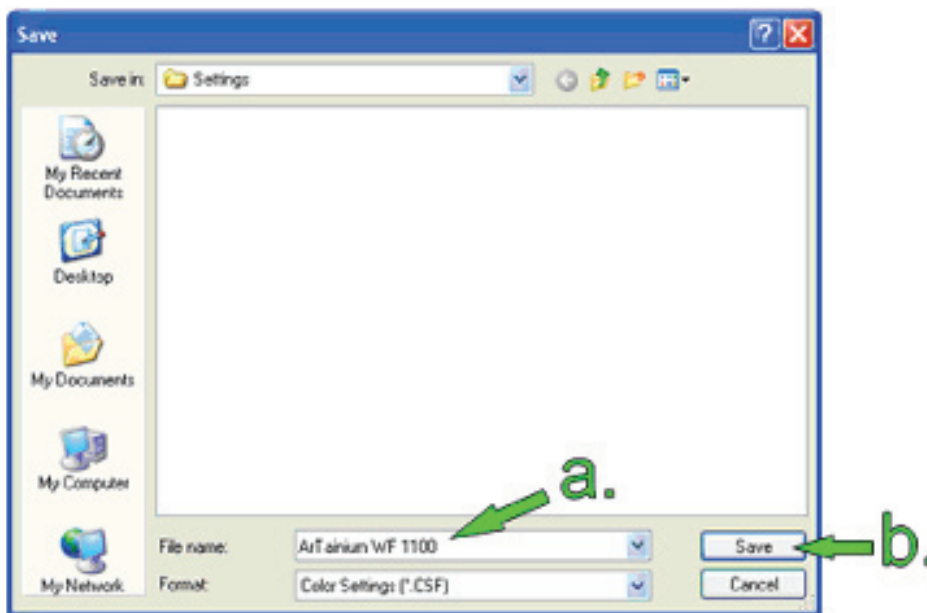


Figure 2

ink. differently.® is a Registered Trademark, and ChromaBlast and Sawgrass are Trademarks of Sawgrass Technologies, Inc. Ricoh, Aficio, and Gelsprinter are Trademarks of Ricoh Corporation.

When opening images in Adobe Photoshop, you may encounter an Embedded Profile Mismatch warning (see illustration at Right).

Select Convert Document's Colors to the working space option and click OK. Continue working with your images as you normally do.

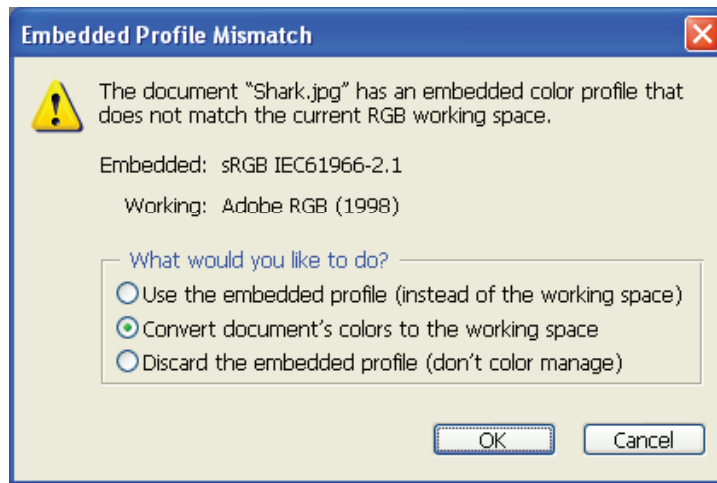
Printing from Adobe Photoshop with ArTainium ICC Profiles

Begin by opening an image in Photoshop CS4. At the top of the application click File > Print. This will open the Print window (see Figure 3).

NOTE: If you are using versions older than CS4, you will need to click File > Print with Preview. Also, your screens may not exactly resemble the ones shown, but the settings will be the same.

1. Configure Photoshop Print Settings: (see Figure 3)

- a. Click the drop-down arrow and select your Printer (see Figure 3 > a.).
- b. Click the drop-down arrow and select Color Management (see Figure 3 > b.).
- c. Select the radio button for Document (see Figure 3 > c.).
- d. Click the drop-down arrow and select Photoshop Manages Colors (see Figure 3 > d.).
- e. Click the drop-down arrow and select Artainium_UV+_WF1100_RGB_v1 (see Figure 3 > e.).
- f. Click the drop-down arrow and select Perceptual (see Figure 3 > f.).
- g. Check Black Point Compensation (see Figure 3 > g.).
- h. Click Print when you have entered the correct settings (see Figure 3 > h.). The following Epson Print window will open (see Figure 4).



Illustration

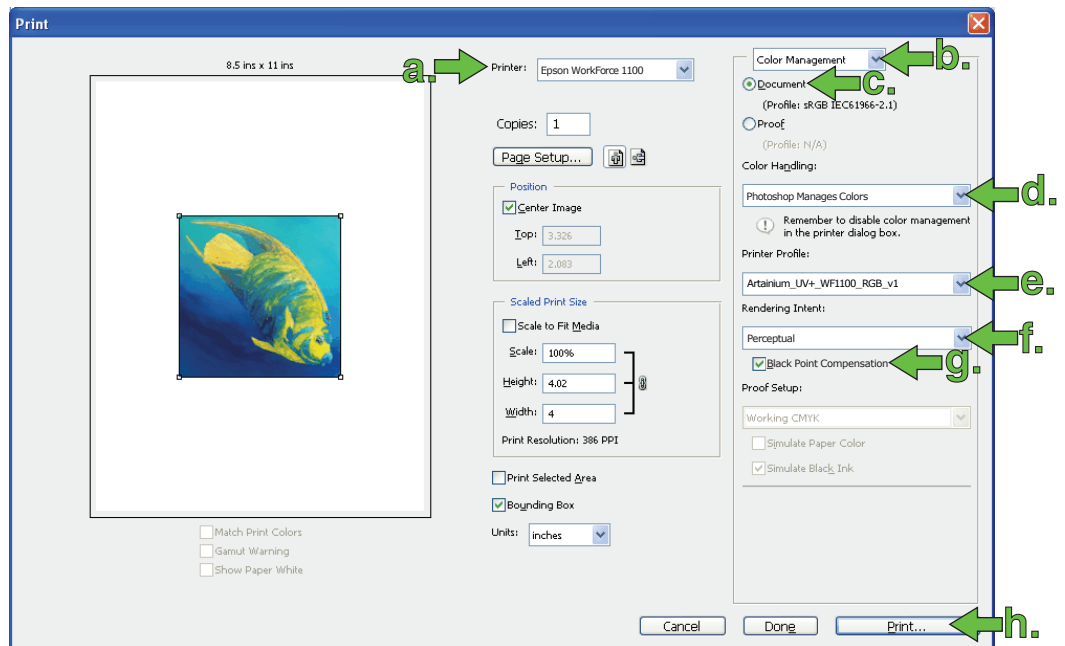


Figure 3

2. Configure Epson Print Settings:
(see Figure 4)

a. Select your Printer from the list
(see Figure 4 > a.).

b. Click Preferences (see Figure 4 > b.). This will open the Epson Printing Preferences window (see Figure 5).

c. Click the Advanced tab (see Figure 5 > c.).

d. Click the drop-down arrow and select ArTainium WF 1100 (see figure 5 > d.). If your settings match those shown in Figure 5, then click OK at the bottom of the Printing Preferences window (see Figure 5). This should return you to the Epson Print window (see Figure 4). Photoshop will now print your image using the ArTainium ICC profile combined with the configured Epson Print Driver.

NOTE: If “ArTainium WF 1100” is not visible in the drop-down menu as discussed in Figure 5 > d., then refer to the “Configuration Guide - ArTainium™ WF-1100” for Configuring the Epson Printer Driver for use with ArTainium ICC Profile .

You can begin printing your image by clicking Print at the bottom of the Epson Print window (see Figure 4).

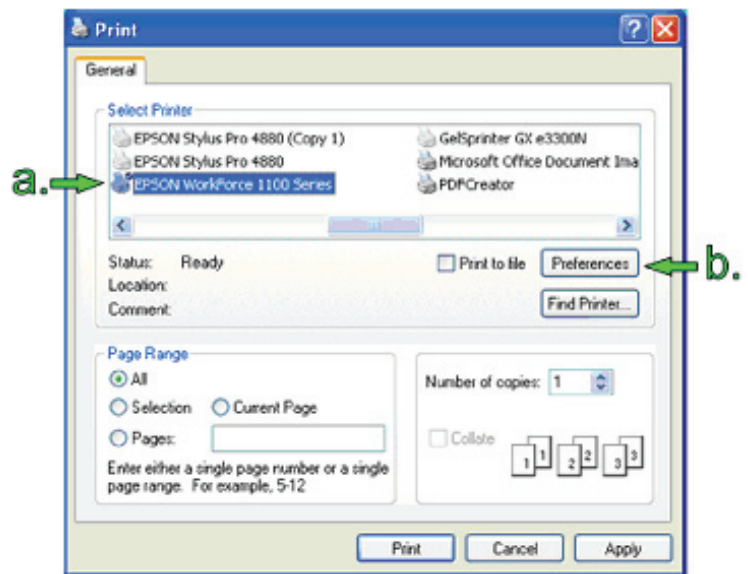


Figure 4

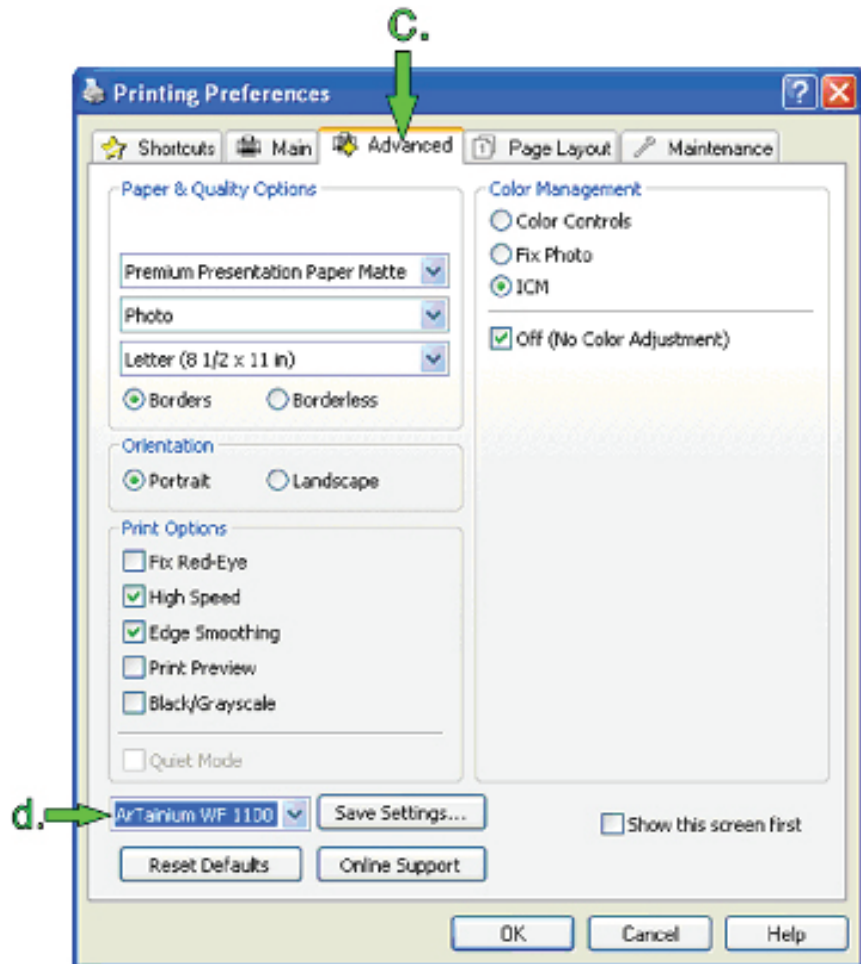


Figure 5