

Epson WorkForce 1100

Setup and Print Guide: CoreIDRAW X5 & X6

IMPORTANT: Before proceeding, ensure the correct Epson (OEM) driver and ArTainium ICC Profile have been installed. For assistance with driver and profile installation, refer to the Installation Guide.

NOTE: Your screens and menus may differ depending on the version of software and operating system you are using. However, the settings will be the same.

CoreIDRAW Workspace Setup

- 1.) Open a New Page in CoreIDRAW (see *FIGURE 1*).

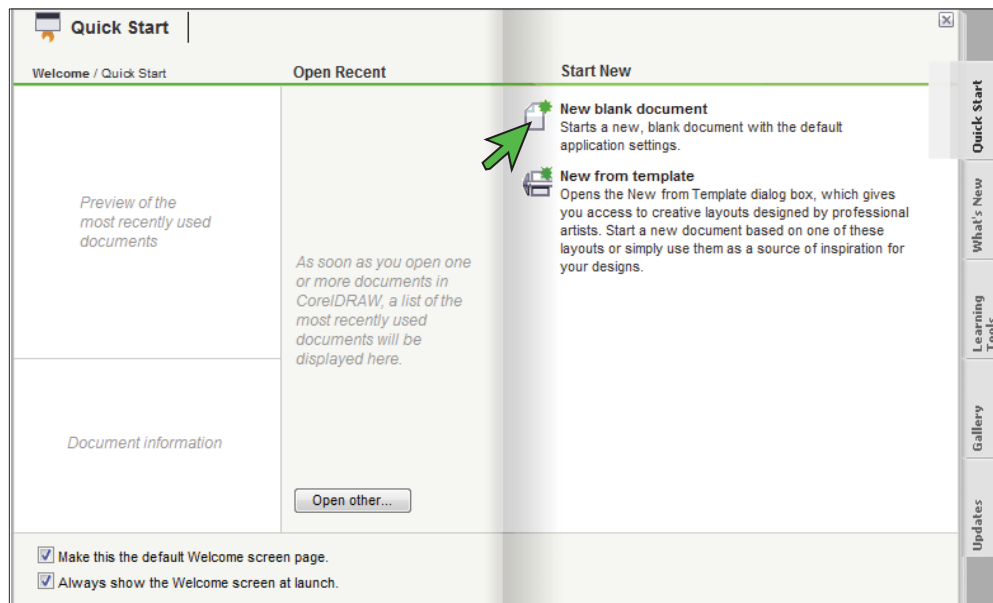


FIGURE 1

ArTainium UV+: Epson WorkForce 1100

Setup and Print Guide: CorelDRAW X5 & X6

- 2.) Configure a New Document Workspace with the settings shown below (see FIGURE 2).

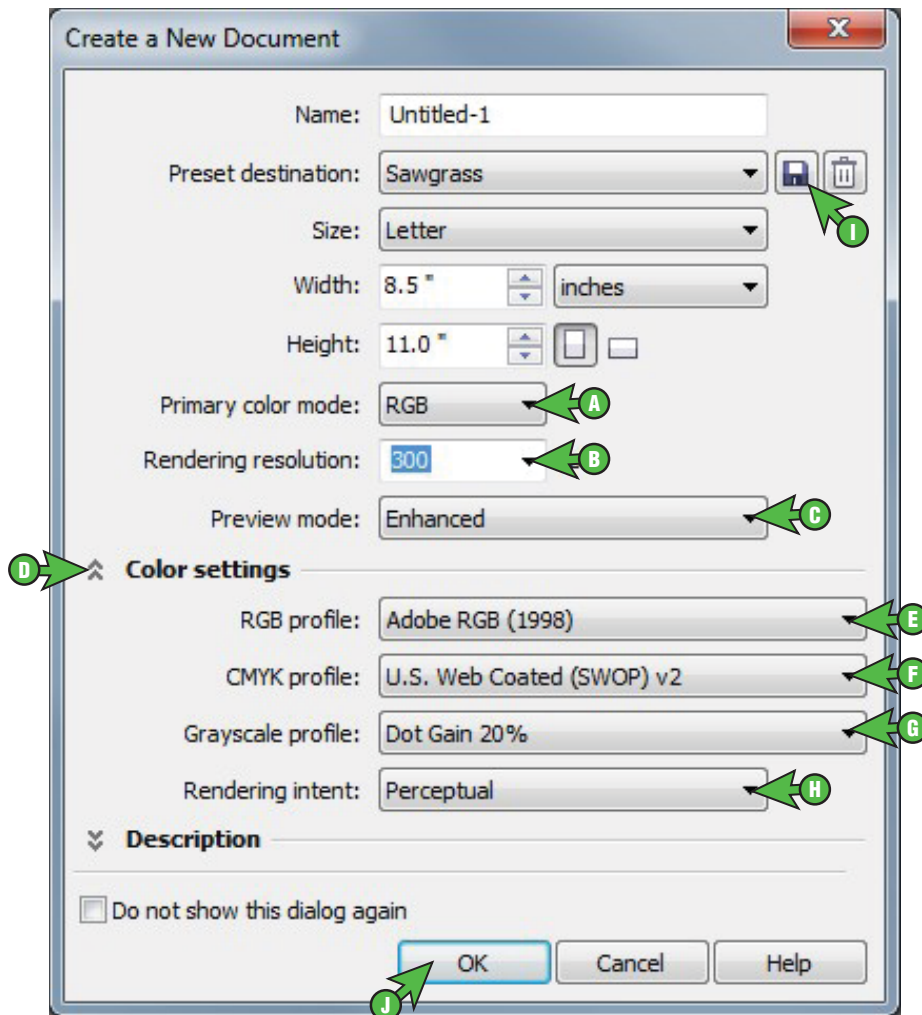


FIGURE 2

- | | |
|--|---|
| A. Primary color mode: RGB | F. CMYK profile: U.S. Web Coated (SWOP) v2 |
| B. Rendering resolution: 300 | G. Grayscale profile: Dot Gain 20% |
| C. Preview mode: Enhanced | H. Rendering intent: Perceptual |
| D. Click the down arrow to view Color Settings | I. Add Preset: Name your new preset |
| E. RGB profile: Adobe RGB (1998) | J. Click OK to continue |

ArTainium UV+: Epson WorkForce 1100

Setup and Print Guide: CorelDRAW X5 & X6

3.) In the Menu Bar, click **Tools > Color Management > Default Settings** (see FIGURE 3).

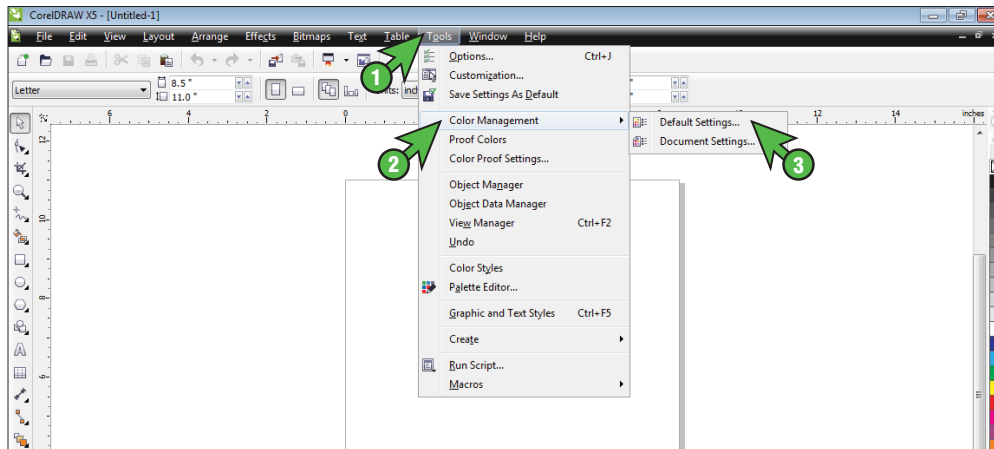


FIGURE 3

4.) In the Default Color Management Settings window, match your settings to those shown below (see FIGURE 4).

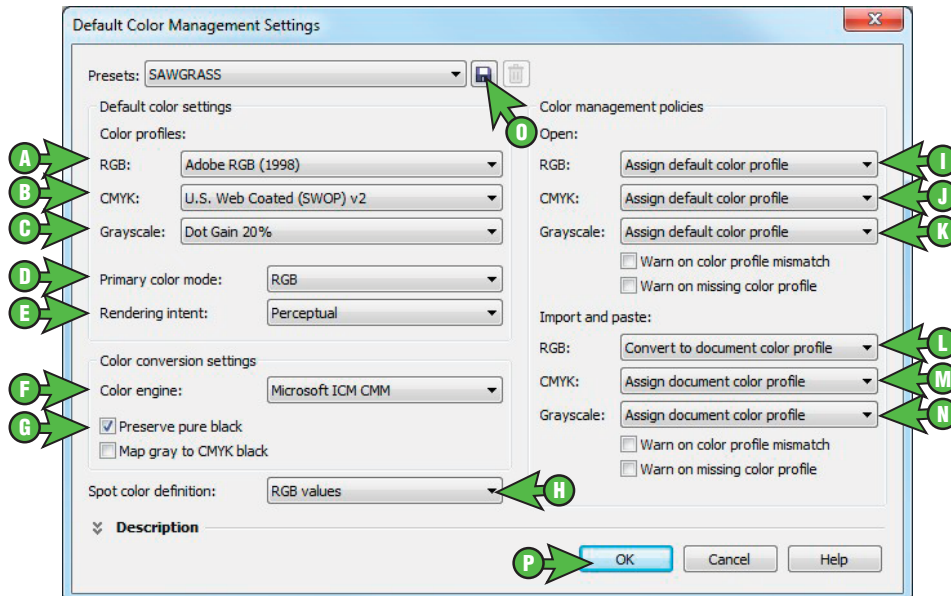


FIGURE 4

- | | |
|--|---|
| <ul style="list-style-type: none"> A. RGB: Adobe RGB (1998) B. CMYK: U.S. Web Coated (SWOP) v2 C. Grayscale: Dot Gain 20% D. Primary color mode: RGB E. Rendering intent: Perceptual F. Color engine: Microsoft ICM CMM G. Check: Preserve pure black H. Spot color definition: RGB values | <ul style="list-style-type: none"> I. RGB: Assign default color profile J. CMYK: Assign default color profile K. Grayscale: Assign default color profile L. RGB: Convert to document color profile M. CMYK: Assign document color profile N. Grayscale: Assign document color profile O. Add Preset: Name your new preset P. Click OK to continue |
|--|---|

ArTainium UV+: Epson WorkForce 1100

Setup and Print Guide: CorelDRAW X5 & X6

- 5.) In the Menu Bar, click **Tools > Color Management > Document Settings** (see *FIGURE 5*).

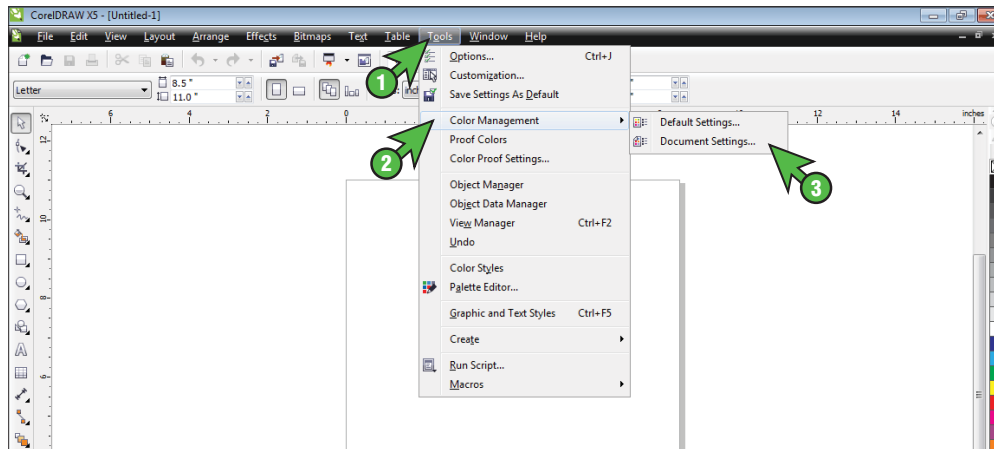


FIGURE 5

- 6.) In the Document Color Settings window, match your settings to those shown below (see *FIGURE 6*).

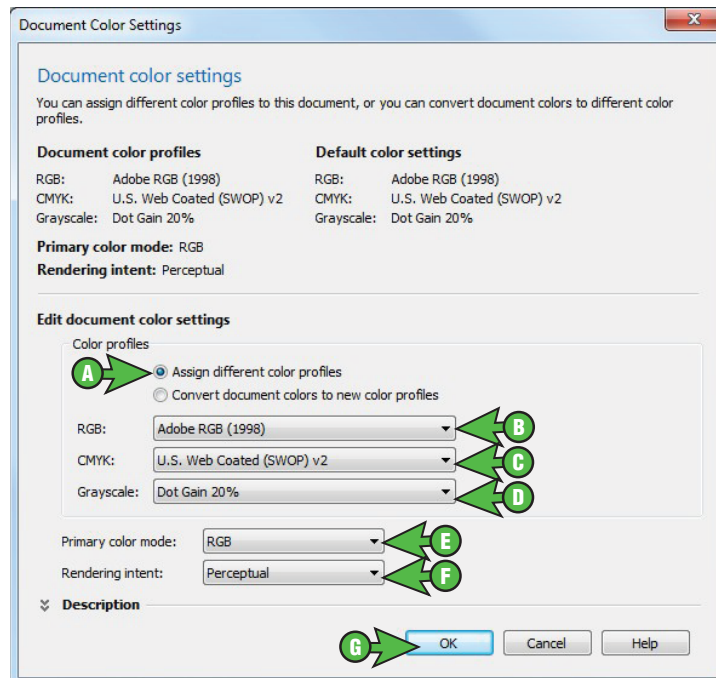


FIGURE 6

- A. Select the radio button: **Assign different color profiles**
- B. RGB: **Adobe RGB (1998)**
- C. CMYK: **U.S. Web Coated (SWOP) v2**
- D. Grayscale: **Dot Gain 20%**
- E. Primary color mode: **RGB**
- F. Rendering intent: **Perceptual**
- G. Click **OK** to continue

ArTainium UV+: Epson WorkForce 1100 Setup and Print Guide: CorelDRAW X5 & X6

Printing from CorelDRAW with the Epson WorkForce 1100 Series

- 7.) With the correct color settings entered, you are now ready to print. In the Menu Bar, click **File > Print**. In the Print window, match your settings to those shown below (see *FIGURE 7*).

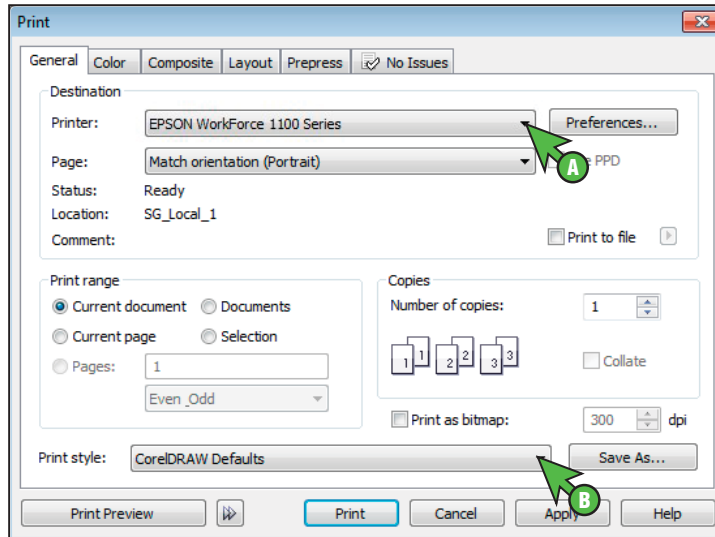


FIGURE 7

- A. Printer: **EPSON WorkForce 1100 Series**
- B. Print style: **CorelDRAW Defaults**

- 8.) In the Print window, click the **Color** tab and match your settings to those shown below (see *FIGURE 8*).

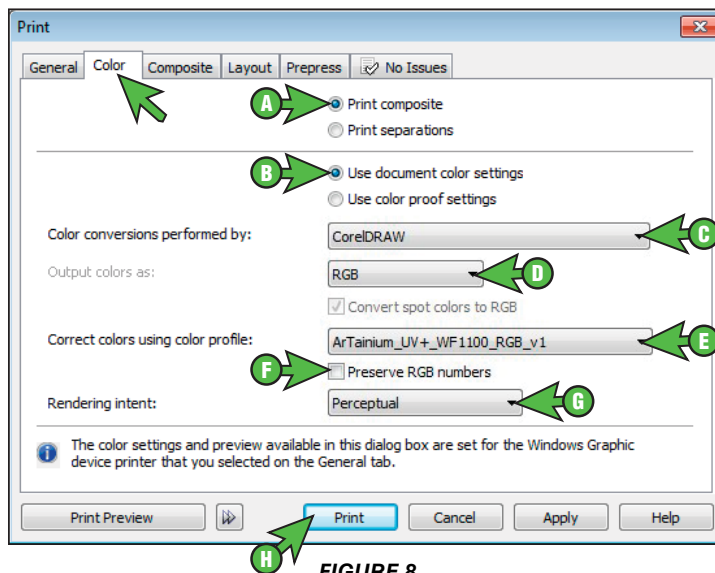


FIGURE 8

- A. Select the radio button: **Print composite**
- B. Select the radio button: **Use document color settings**

ArTainium UV+: Epson WorkForce 1100
Setup and Print Guide: CoreIDRAW X5 & X6

- C. Color conversions performed by: **CoreIDRAW**
- D. Output color as: **RGB**
- E. Correct colors using color profile: **ArTainium_UV+_WF1100_RGB_v1**
NOTE: *If the profile is not visible, try restarting CoreIDRAW. If the profile is still missing after restarting CoreIDRAW, refer to the Installation Guide.*
- F. Uncheck/Deselect: **Preserve RGB numbers**
- G. Rendering Intent: **Perceptual**
- H. Click **Print** when you are ready to print your image

Congratulations! CoreIDRAW Setup is now complete. Remember to select the Epson WorkForce 1100 each time you are ready to print.

For the absolute latest information and updates on all products, materials, processes and/or procedures relative to all offerings by or through Sawgrass Technologies, Inc., please refer to our website:
www.sawgrassink.com