

EPSON WorkForce 30

Print Setup Guide: Photoshop CS5

Before proceeding, please be sure you have the correct OEM printer driver and ArTainium ICC Profile installed. For Assistance with installation, refer to the Installation and Registration Guide.

NOTE: Your screens and menus may differ depending on the version of software and operating system you are using. However, the settings will be the same.

Photoshop CS5 Setup Guide

1. Begin by opening Photoshop. In the menu bar, click **Edit > Color Settings** (Ctrl+Shift+K): (see FIGURE 1)

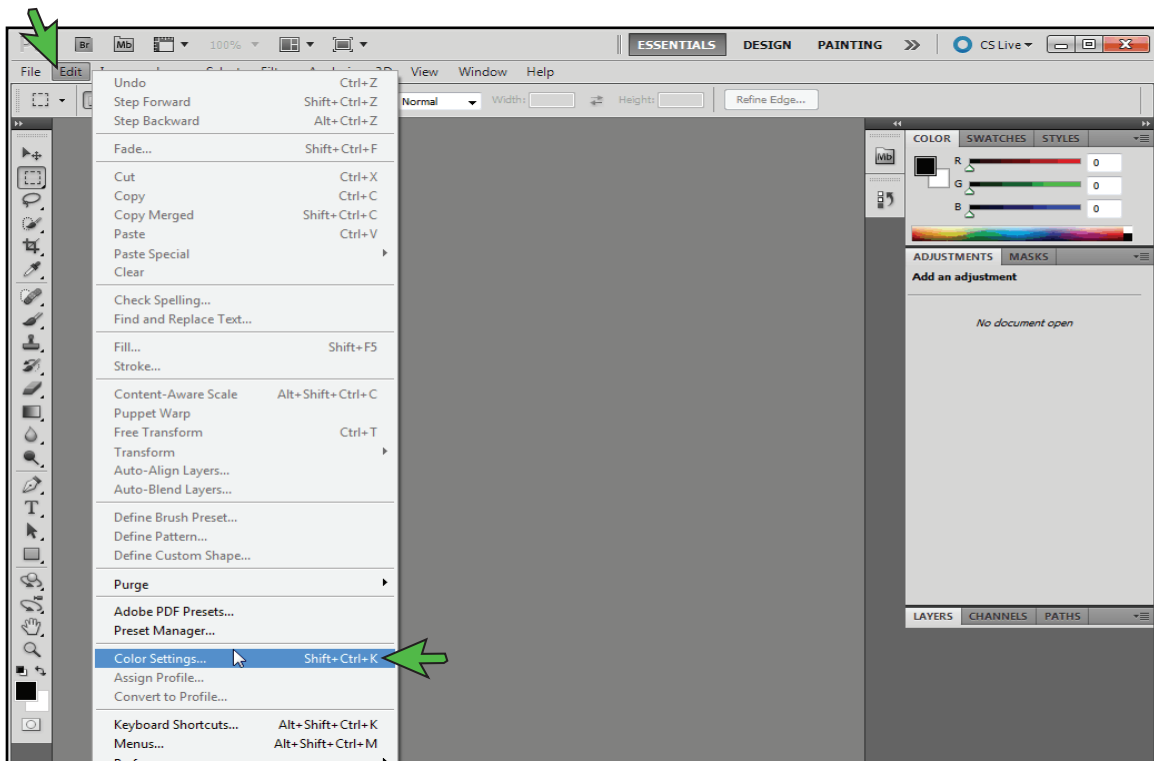


FIGURE 1

ArTainium UV+: EPSON WorkForce 30 Setup and Print Guide: Photoshop CS5 (cont'd 2:5)

2. The Color Settings window should now be open (see *FIGURE 2*). Match your settings to the ones shown below:

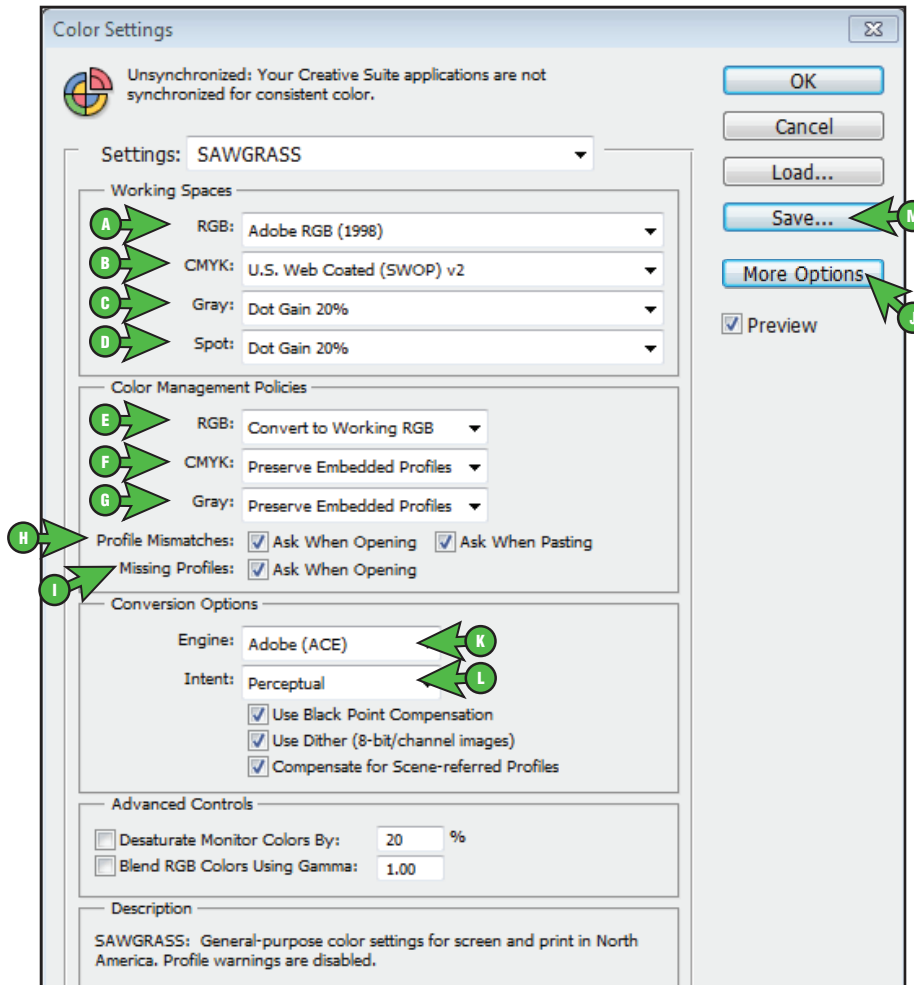


FIGURE 2

- | | |
|--|--|
| <ul style="list-style-type: none"> A. RGB: Adobe RGB (1998) B. CMYK: U.S. Web Coated (SWOP) v2 C. Gray: Dot Gain 20% D. Spot: Dot Gain 20% E. RGB: Convert to Working RGB F. CMYK: Preserve Embedded Profiles G. Gray: Preserve Embedded Profiles H. Profile Mismatches: Check Ask When Opening and also check Ask When Pasting | <ul style="list-style-type: none"> I. Missing Profiles: Check Ask When Opening J. If Conversion Options is not visible, click More Options K. Engine: Adobe (ACE) L. Intent: Perceptual M. Once your settings match, click Save. This will open the Save window (see <i>FIGURE 3</i>). |
|--|--|

ArTainium UV+: EPSON WorkForce 30 Setup and Print Guide: Photoshop CS5 (cont'd 3:5)

NAME your new preset in the File Name field and click **Save** when complete.

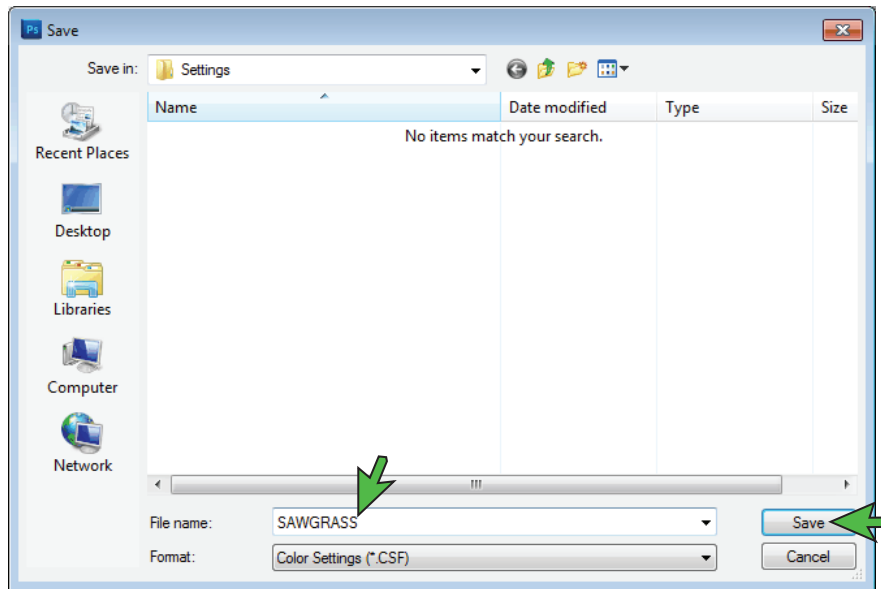


FIGURE 3

The Photoshop RGB Working Space is now set.

3. When opening images in Photoshop, you may encounter an Embedded Profile Mismatch warning. In this instance, select the radio button **Convert document's colors to the working space** and click **OK** to continue (see FIGURE 4).

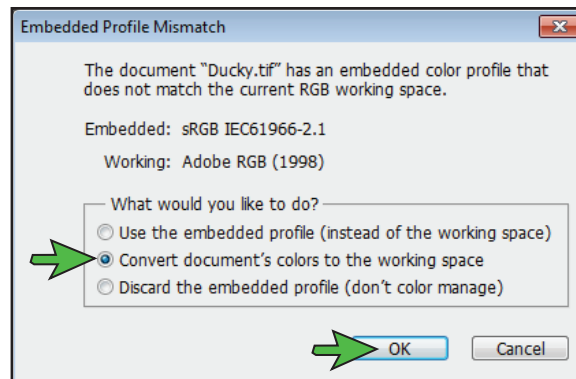


FIGURE 4

NOTE: Always choose to use or convert to **Adobe RGB (1998)**.

ArTainium UV+: EPSON WorkForce 30 Setup and Print Guide: Photoshop CS5 (cont'd 4:5)

- Once an image has been opened in Photoshop, you will need to ensure that RGB color mode has been selected. In the menu bar, click **Image > Mode > RGB Color**. A check mark should now be visible beside **RGB Color** (see *FIGURE 5*).

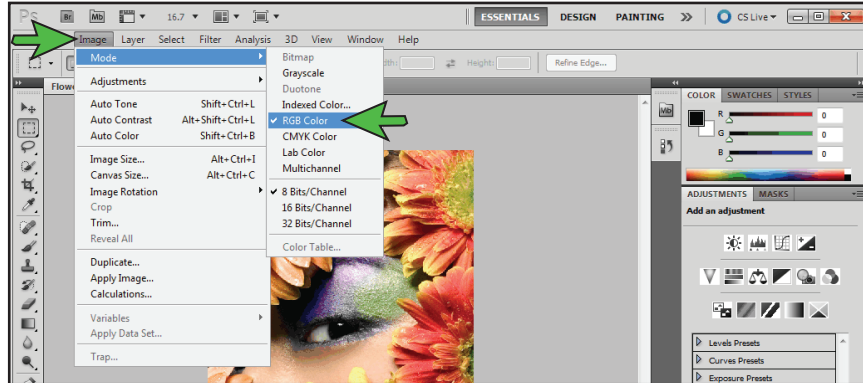


FIGURE 5

Printing from Photoshop with Epson WorkForce 30 Series

Begin by opening an image in Photoshop. In the menu bar, click **File > Print**. This will open the Print window (see *FIGURE 6*). Match your settings to the ones shown below:

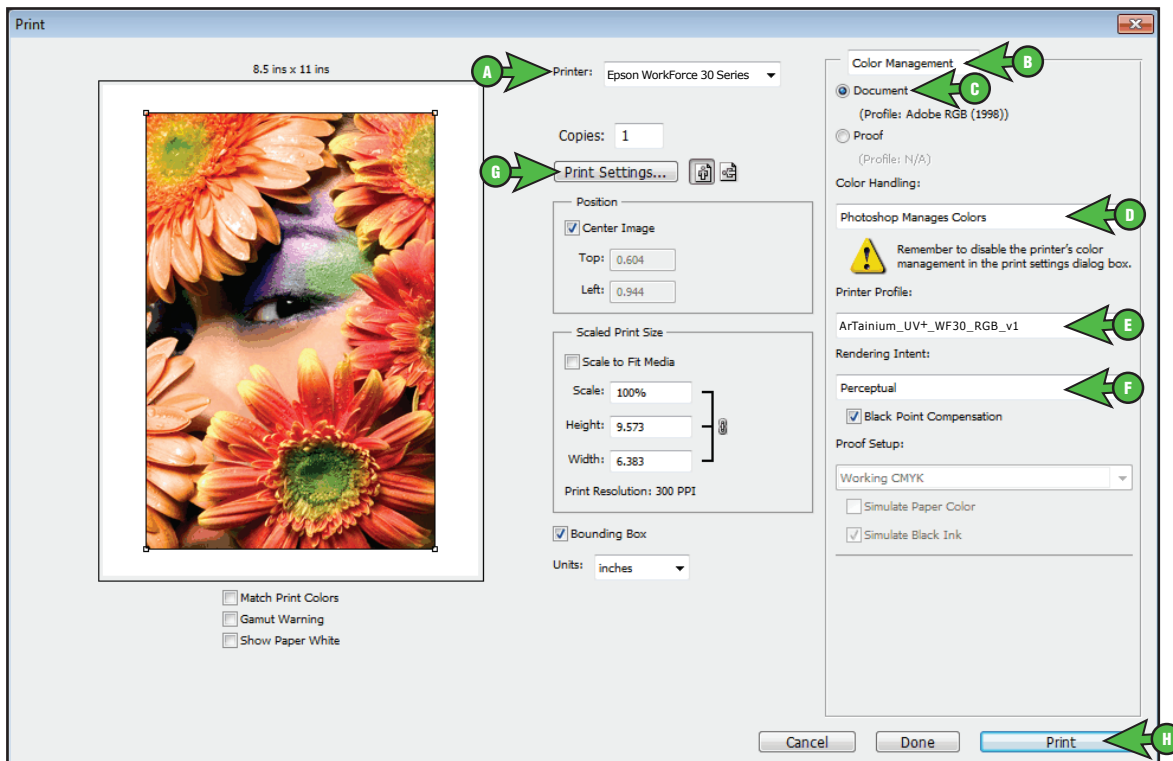


FIGURE 6

- Click the drop-down arrow [▼] and select your **Epson WorkForce 30 Series**
- Click the drop-down arrow [▼] and select **Color Management**
- Select the radio button [☉] for **Document**

ArTainium UV+: EPSON WorkForce 30 Setup and Print Guide: Photoshop CS5 (cont'd 5:5)

- D. Click the drop-down arrow [▼] and select **Photoshop Manages Colors**
- E. Click the drop-down arrow [▼] and select **ArTainium_UV+_WF30_RGB_v1**
- F. Click the drop-down arrow [▼] and select **Perceptual**
- G. Click **Print Settings** when you have entered the correct settings. This will open the Printing Preferences window (see FIGURE 7). Under the **Advanced Tab**, click the drop-down arrow [▼] and select **ArTainium WF30**. Click **OK** to return to the Print window.

NOTE: If **ArTainium WF30** is not visible in the drop-down list, then refer to the Configuration Guide for configuring the Epson printer driver for use with the ArTainium ICC profile. If the profile has been installed and configured correctly, then try restarting Photoshop.

- H. You can begin printing your image by clicking **Print** (see FIGURE 6).

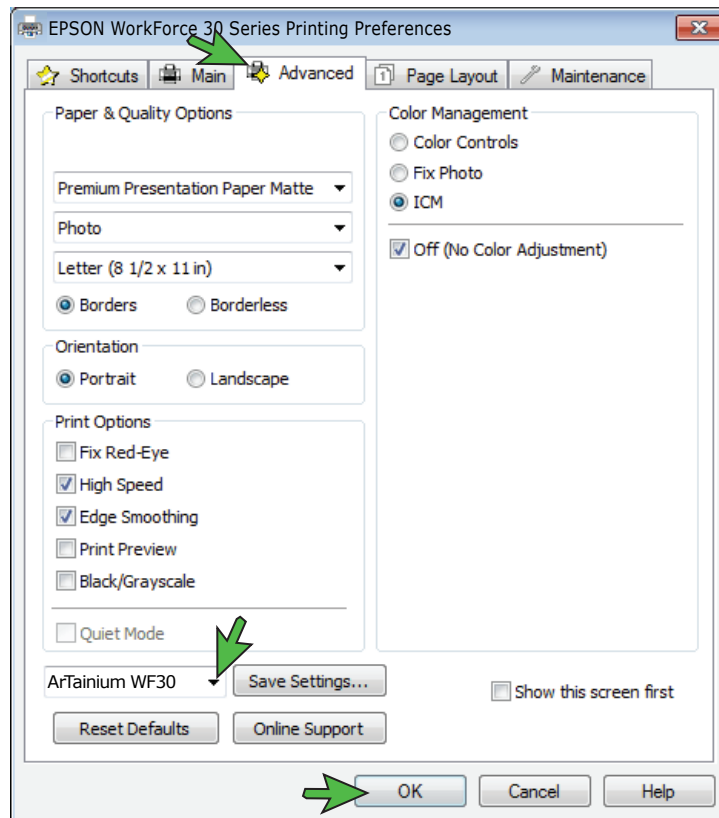


FIGURE 7

Congratulations! Photoshop CS5 setup is now complete. Remember to select EPSON WorkForce 30 Series each time you are ready to print.

NOTE: For the absolute latest Information and Updates on all Products, Materials, Processes, and/or Procedures relative to all offerings by or through Sawgrass Technologies, Inc., please refer to our Website: www.sawgrassink.comw