

Epson Stylus Photo R1900

Setup and Print Guide: Illustrator CS5

Before proceeding, please be sure you have the correct OEM printer driver and ArTainium ICC Profile installed. For assistance with Profile installation, refer to the Installation and Registration Guide.

NOTE: Your screens and menus may differ depending on the version of software and operating system you are using. However, the settings will be the same.

Illustrator Setup Guide

1. Begin by opening Adobe Illustrator. At the top of the application click **Edit > Color Settings**. This will open the Color Settings window (see *FIGURE 1*). Match your settings to the ones show below:

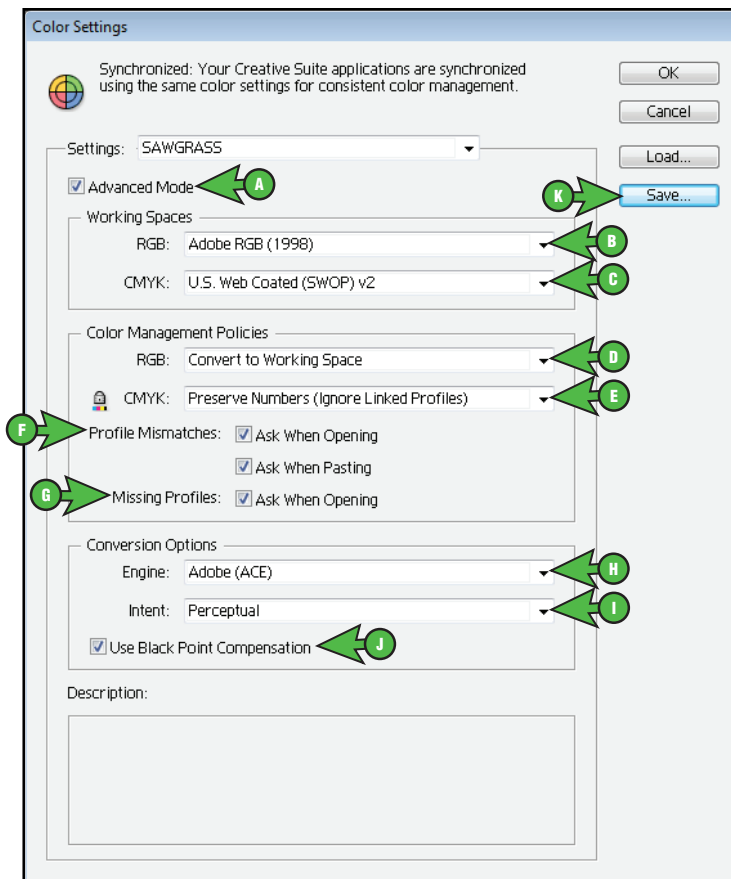


FIGURE 1

- A. Check **Advanced Mode**
- B. RGB: **Adobe RGB (1998)**
- C. CMYK: **U.S. Web Coated (SWOP) v2**
- D. RGB: **Convert to Working RGB**

ArTainium UV+: Epson Stylus Photo R1900 Setup and Print Guide: Illustrator CS5 (cont'd 2:6)

- E. CMYK: **Preserve Numbers (Ignore Linked Profiles)**
- F. Profile Mismatches: Check **Ask When Opening** and also check **Ask When Pasting**
- G. Missing Profiles: Check **Ask When Opening**
- H. Engine: **Adobe (ACE)**
- I. Intent: **Perceptual**
- J. Check **Use Black Point Compensation**
- K. Once your settings match, click **Save**. This will open the Save window (see *FIGURE 2*). NAME your new preset in the **File Name** field and click **Save** when complete.

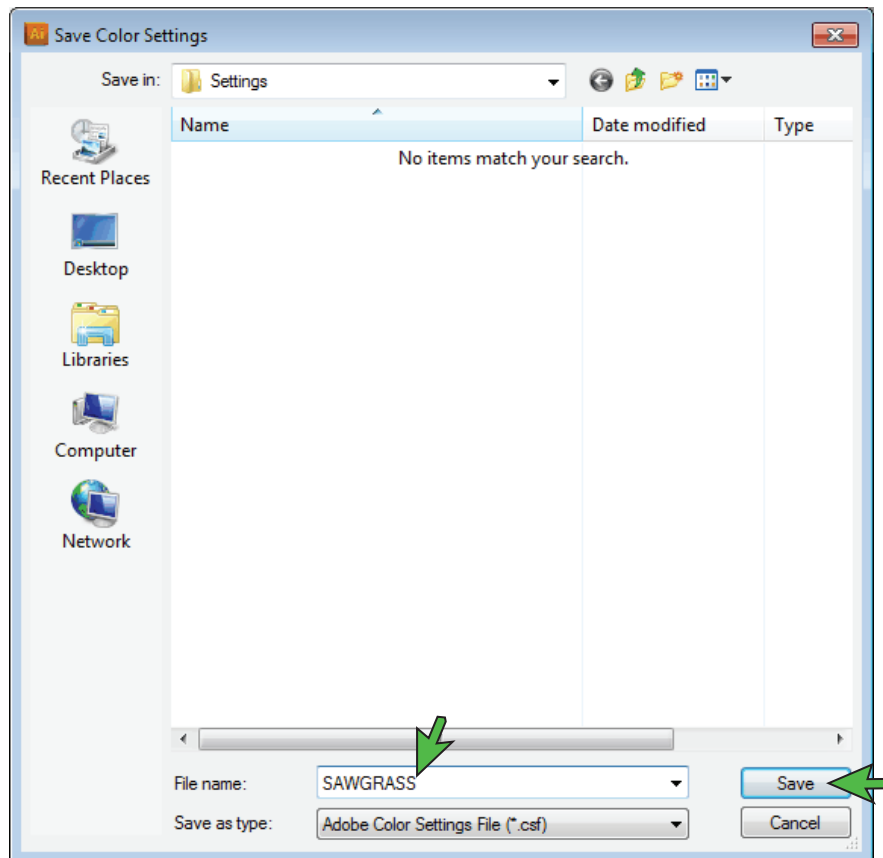


FIGURE 2

The Illustrator RGB working space is now set.

ArTainium UV+: Epson Stylus Photo R1900 Setup and Print Guide: Illustrator CS5 (cont'd 3:6)

- At the top of the application click **File > New...** (Ctrl+N). This will open the New Document window (see *FIGURE 3*). Match your settings to the ones show below:

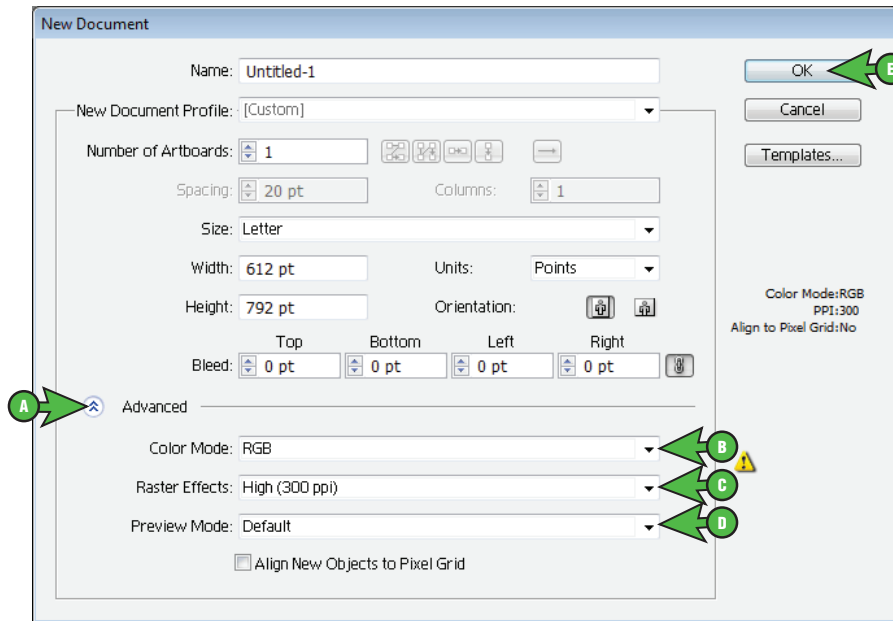


FIGURE 3

- Click the drop-down [▾] arrow next to **Advanced**
 - Click the drop-down [▾] arrow and select **RGB**
 - Click the drop-down [▾] arrow and select **High (300 ppi)**
 - Click the drop-down [▾] arrow and select **Default**
 - Click **OK** to continue
- When opening or importing images in Illustrator, you may encounter a **Missing Profile** warning. In this instance, select the radio [☑] button for **Assign current working space: Adobe RGB (1998)**. Click **OK** to continue (see *FIGURE 4*).

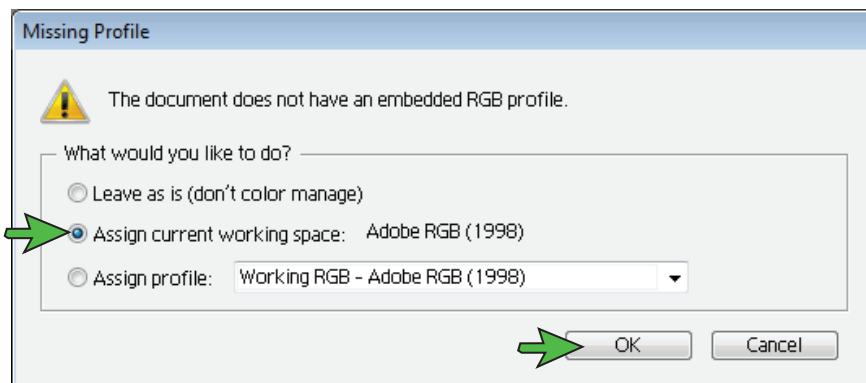


FIGURE 4

NOTE: Always choose to use or convert to Adobe RGB (1998).

ArTainium UV+: Epson Stylus Photo R1900 Setup and Print Guide: Illustrator CS5 (cont'd 4:6)

4. Once an image has been opened or imported in Illustrator, you will need to ensure that RGB color mode has been selected. In the menu bar, click **File > Document Color Mode > RGB Color**. A check mark should now be visible beside **RGB Color** (see *FIGURE 5*).

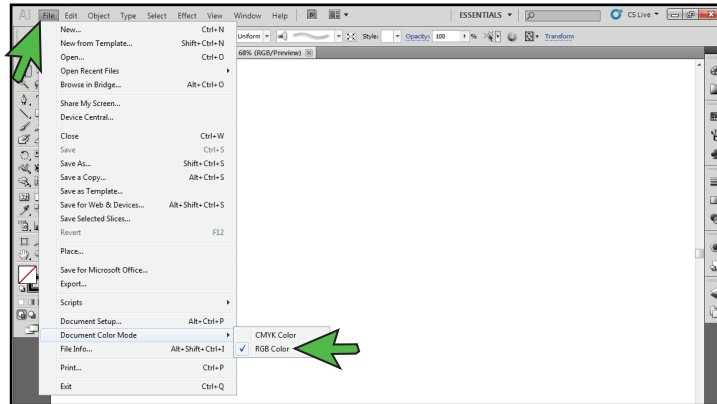


FIGURE 5

Printing from Illustrator with Epson Stylus Photo R1900 Series

Begin by opening an image in Illustrator. In the menu bar, click **File > Print**. This will open the Print window (see *FIGURE 6*). Match your settings to the ones shown below:

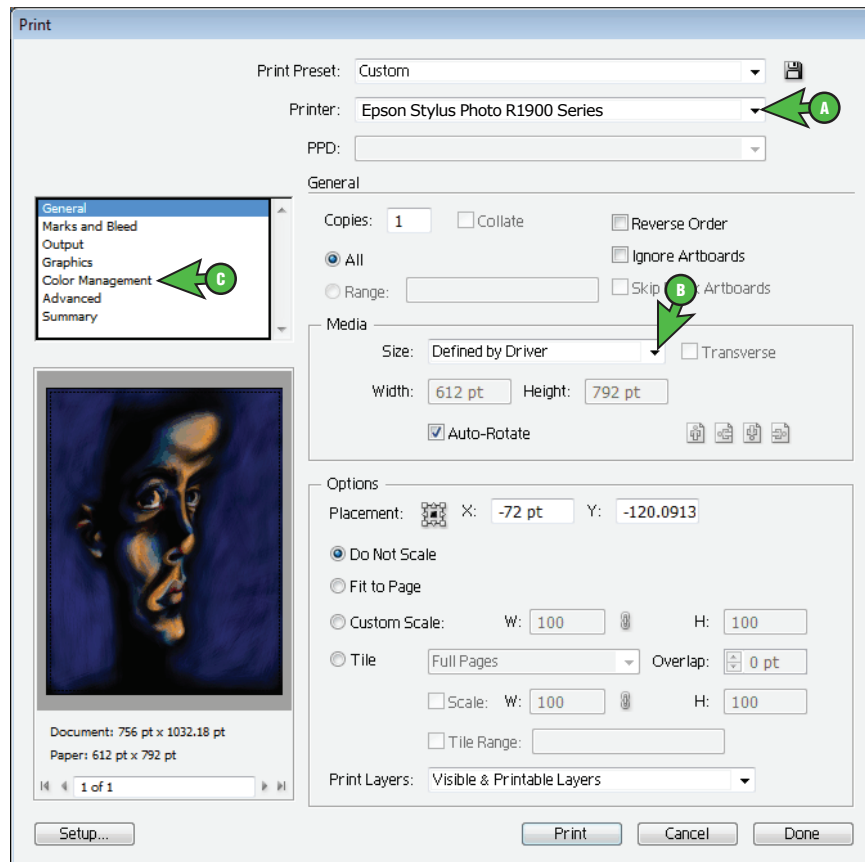


FIGURE 6

- A. Click the drop-down [▼] arrow and select **Epson Stylus Photo R1900 Series**

ArTainium UV+: Epson Stylus Photo R1900 Setup and Print Guide: Illustrator CS5 (cont'd 5:6)

- B. Click the drop-down [▼] arrow and select **Defined by Driver**
- C. Once your settings match, click **Color Management**. This opens the Color Management Screen (see FIGURE 7)

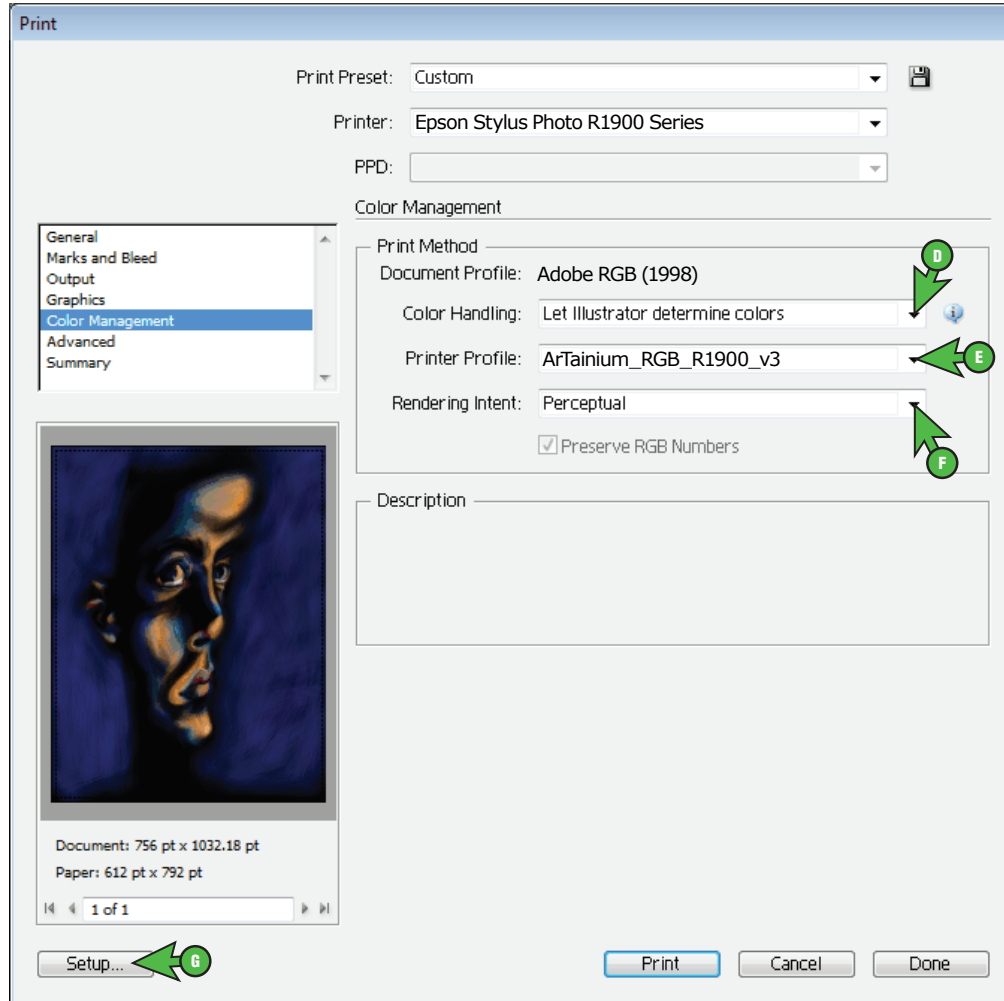


FIGURE 7

- D. Click the drop-down [▼] arrow and select **Let Illustrator determine colors**
- E. Click the drop-down [▼] arrow and select **ArTainium_RGB_R1900_v3**

NOTE: If **ArTainium_RGB_R1900_v3** is not visible in the drop-down menu, then refer to the **Installation and Registration Guide** and the **Configuration Guide** for installing and configuring the ArTainium ICC Profile for use with the Epson Printer Driver.

- F. Click the drop-down [▼] arrow and select **Perceptual**
- G. Once your settings match, click **Setup**. This will open the Print window (see FIGURE 8)

ArTainium UV+: Epson Stylus Photo R1900 Setup and Print Guide: Illustrator CS5 (cont'd 6:6)

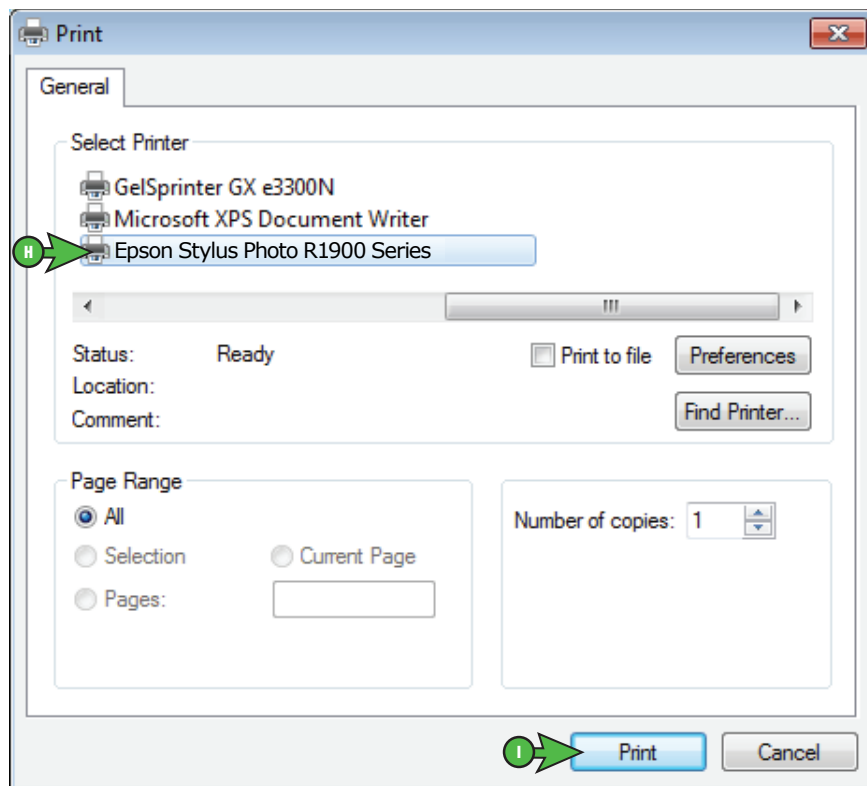


FIGURE 8

- H. Select printer **Epson Stylus Photo R1900 Series**
- I. Click **Print** when you are ready to print your image.

Congratulations! Adobe Illustrator setup is now complete. Remember to select Epson Stylus Photo R1900 Series each time you are ready to print.

NOTE: For the absolute latest Information and Updates on all Products, Materials, Processes, and/or Procedures relative to all offerings by or through Sawgrass Technologies, Inc., please refer to our Website: www.sawgrassink.com