

# Epson Stylus Pro 4880

## Setup and Print Guide: Elements 8, 9 & 10

**IMPORTANT:** Before proceeding, please be sure you have the correct Epson OEM printer driver and ArTainium ICC Profile installed. For assistance with profile installation, refer to the Installation and Registration Guide.

**NOTE:** Your screens and menus may differ depending on the version of software and operating system you are using. However, the settings will be the same.

### Elements Workspace Setup

Begin by opening an image in Photoshop Elements. At the top of the application click **Edit > Color Settings**. This will open the **Color Settings** window (see *FIGURE 1*).

- 1.) Configuring Color Settings: (see *FIGURE 1*)
  - a. **Color Settings > Choose how to manage color in your images:** > select the  radio button for **Always Optimize for Printing** (see *FIGURE 1 > A*).
  - b. Click **OK** to save your changes and continue (see *FIGURE 1 > B*).

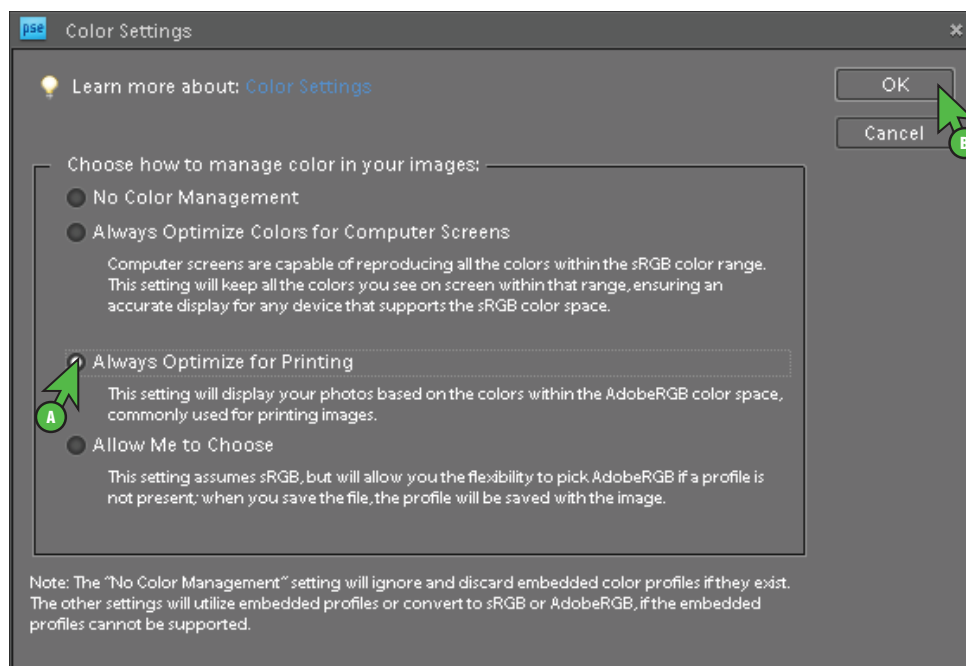


FIGURE 1

## ArTainium UV+: Epson 4880 Setup and Print Guide – Elements 8, 9 & 10 (cont'd 2:4)

- 2.) Configure Color Mode Settings: (see FIGURE 2)
  - a. At the top of your application, click **Image > Mode > RGB Color** (see FIGURE 2 > A).
  - b. A check mark should now be visible next to **RGB Color** (see FIGURE 2 > B).

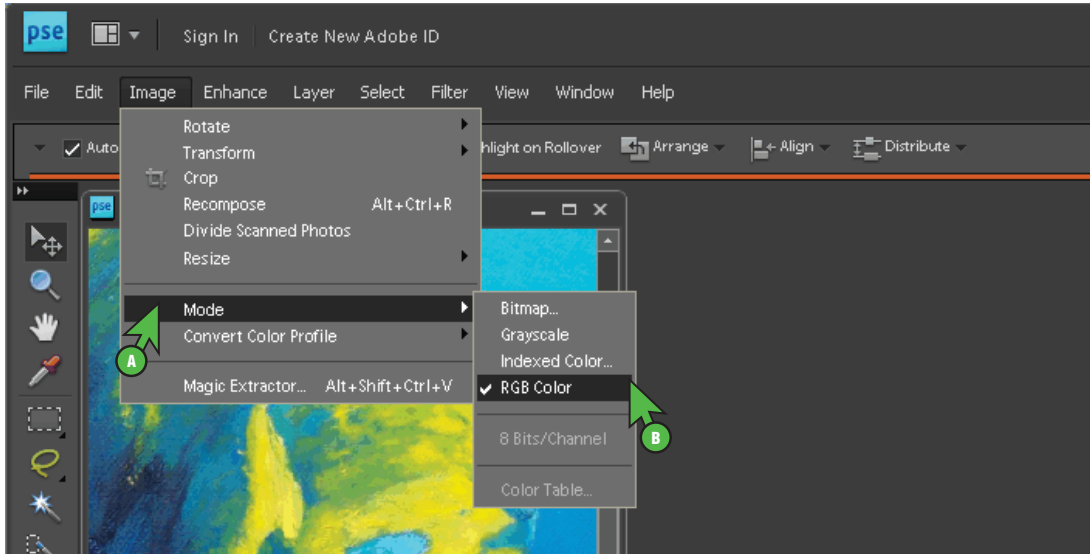


FIGURE 2

- 3.) Configure Embedded Profile: (see FIGURE 3)
  - a. At the top of your application, click **Image > Convert Color Profile > Convert to Adobe RGB Profile** (see FIGURE 3 > A).

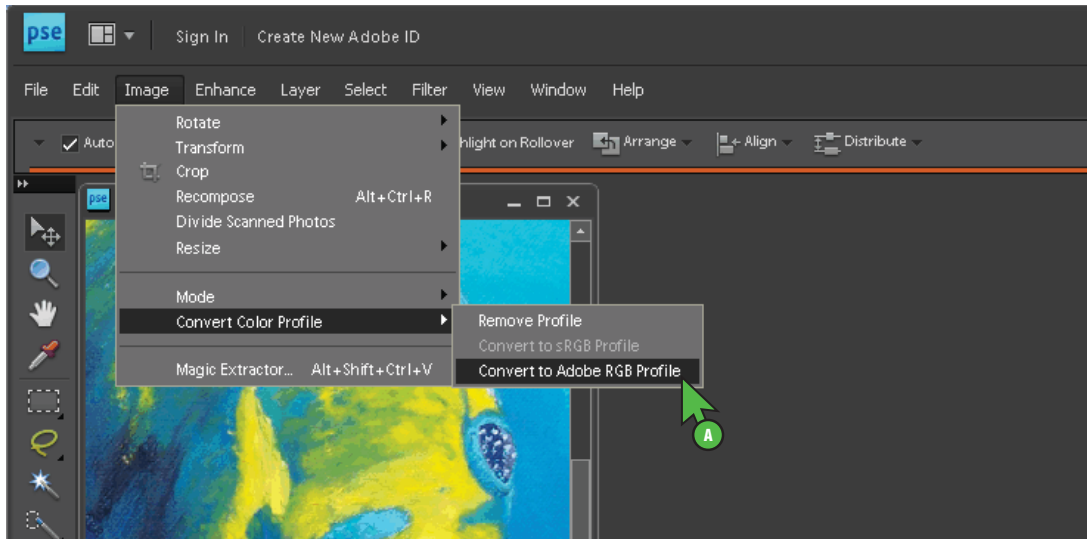


FIGURE 3

## Printing from Elements with the Epson Stylus Pro 4880

- 4.) Configure Print Settings: (see Figure 4)
  - a. At the top of the application click **File > Print**. This will open the **Print** window (see FIGURE 4 > A).
  - b. Click the [▼] drop-down arrow and select **Epson Stylus Pro 4880** (see FIGURE 4 > B).
  - c. At the bottom of the **Print** window, click **More Options** (see FIGURE 4 > C). This will open the **More Options** window (see FIGURE 4 > D).
  - d. In the **More Options** window, click **Color Management** (see FIGURE 4 > E).
  - e. Click the [▼] drop-down arrow and select **Photoshop Elements Manages Color** (see FIGURE 4 > F).
  - f. Click the [▼] drop-down arrow and select **ArTainium\_UV+\_4880\_v1** (see FIGURE 4 > G).
  - g. Click the [▼] drop-down arrow and select **Perceptual** (see FIGURE 4 > H).
  - h. Click **Printing Preferences...** (see FIGURE 4 > I). This will open the **Printing Preferences** window (see FIGURE 5 > A).

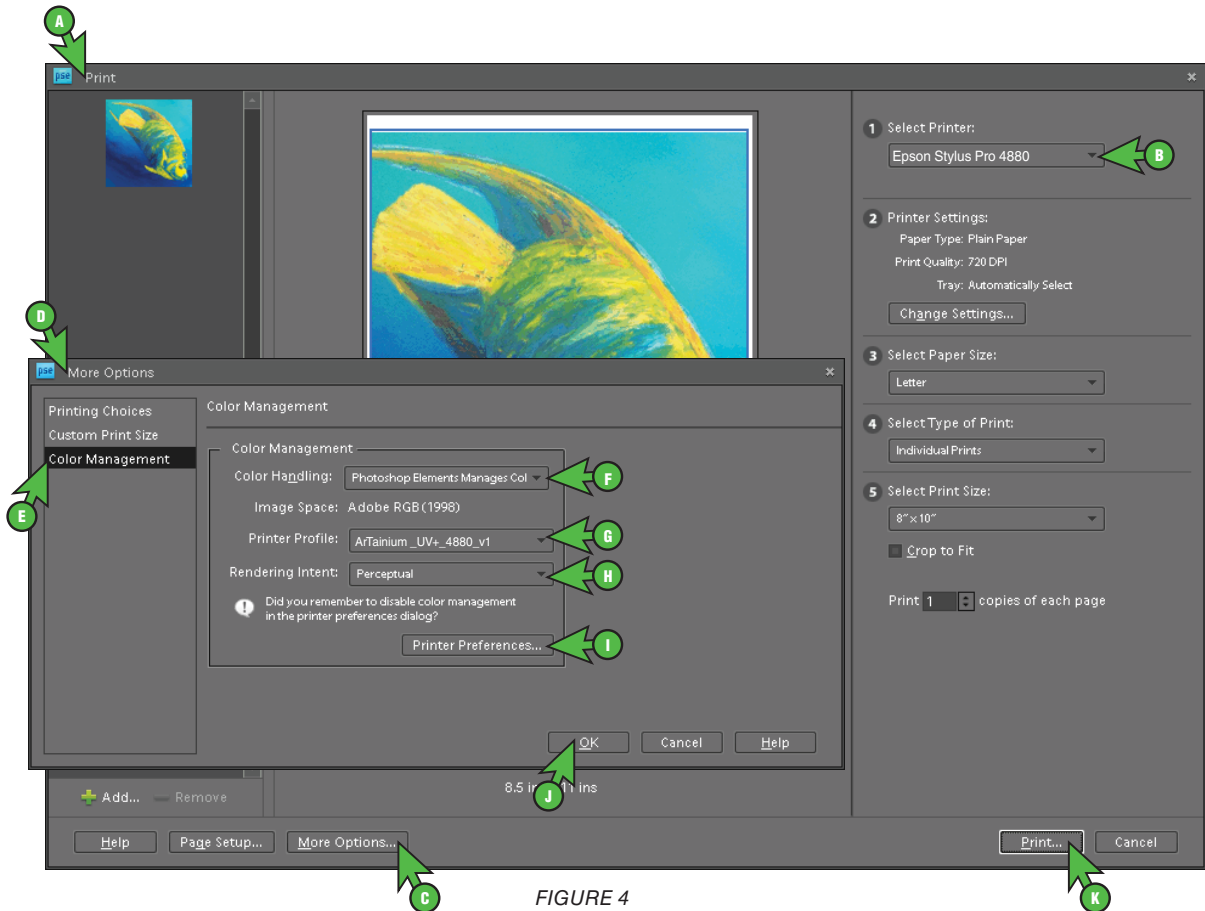


FIGURE 4

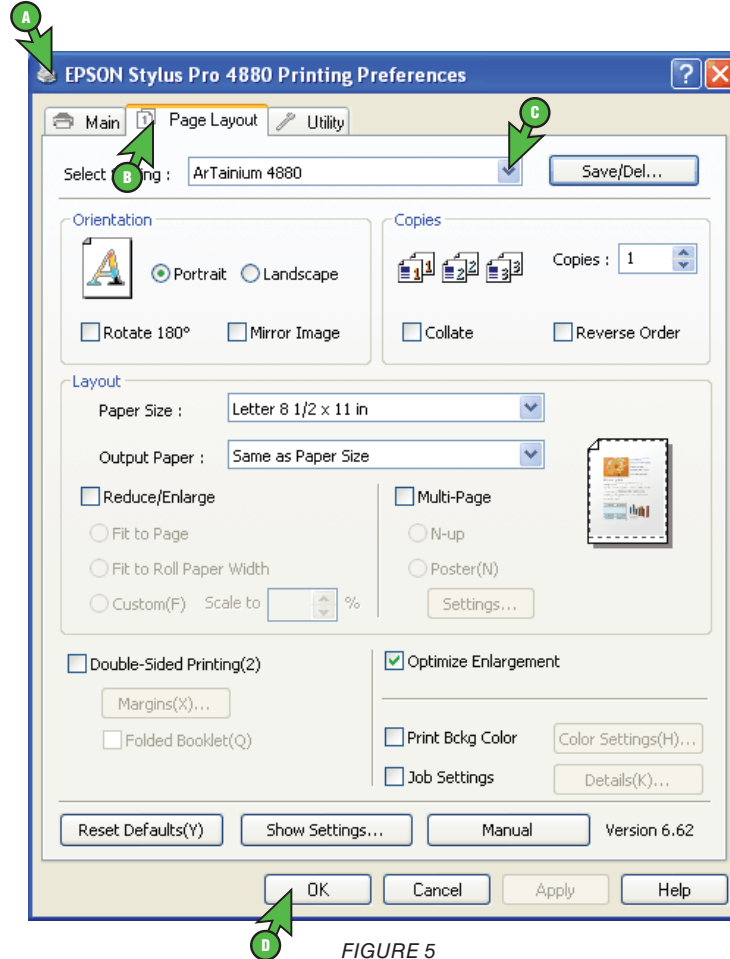


FIGURE 5

- i. Click the **Page Layout** tab (see FIGURE 5 > B).
- j. Click the [▼] drop-down arrow and select **ArTainium 4880** (see FIGURE 5 > C).  
**NOTE:** If “ArTainium 4880” is not visible in the drop-down menu, then refer to the Configuration Guide for configuring the Epson printer driver to print using the ArTainium ICC profile. If the profile has been installed and configured correctly, then try restarting Photoshop Elements.
- k. Click **OK** to save your changes (see FIGURE 5 > D). This will return you to the **More Options** window (see FIGURE 4 > D).
- l. Click **OK** to save your changes (see FIGURE 4 > J). This will return you to the **Print** window (see FIGURE 4 > A).
- m. You can begin printing your image by selecting **Print** (see FIGURE 4 > K).

**Congratulations!** Photoshop Elements setup is now complete. Remember to select Epson Stylus Pro 4880 each time you are ready to print.