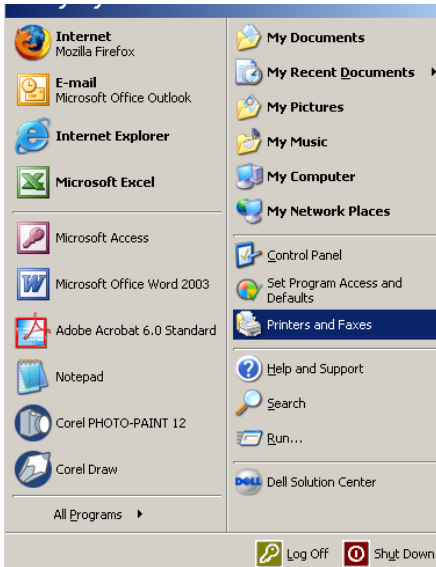
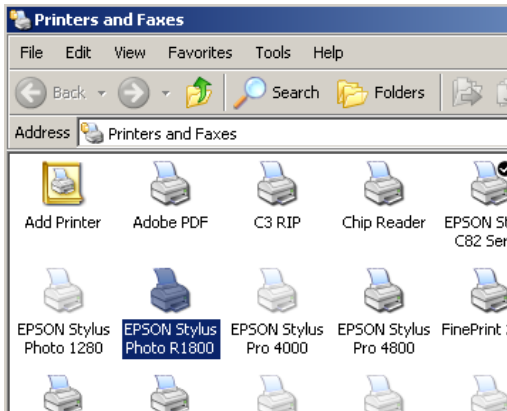


# Configuring the Epson Stylus Photo R1800 Printer Driver for ArTainium ICC Profiles

1. On the PC desktop, click Start then select Printers and Faxes as shown to the right:

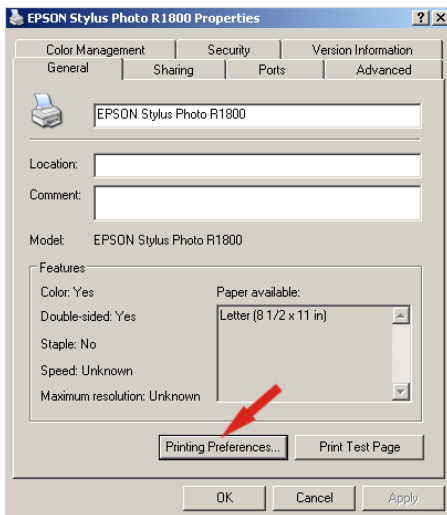


2. Right click on the Epson Stylus Photo R1800 Printer Icon and select Properties from the context menu.

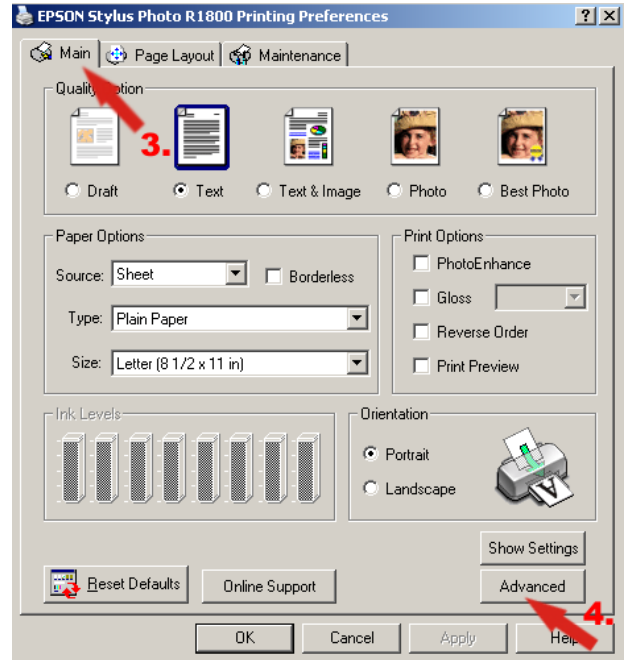


**\*\*For Windows XP users Only \*\***

This is the first screen that will pop-up. Click on Printing Preferences to get to the next screen.



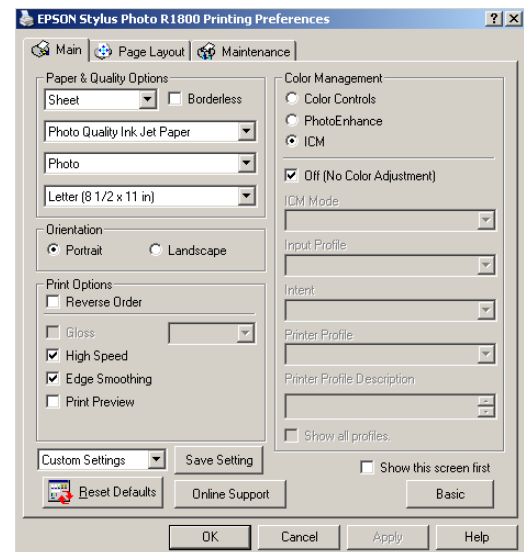
3. Click on the Main tab to show the screen you will be working in.



4. Then click on the advanced tab to setup the necessary options for Artainium profiles.

5. Select the settings as shown below:

- Media Type: **Photo Quality Ink Jet Paper**
- Print Quality: **Photo**
- Color Management: **ICM**
- ICC/ICM Profile: **Off (No Color Adjustment)**
- High Speed: **On**
- Edge Smoothing: **On**

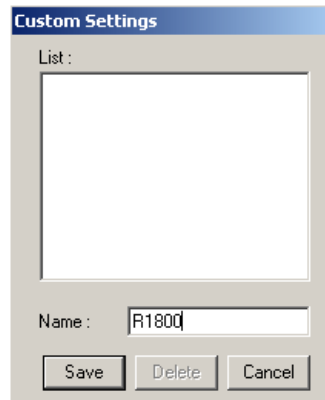


6. Once settings are complete, click on the Save Settings button to save these options so this process doesn't have to be completed each time printing is done.

# Configuring the Epson Stylus Photo R1800 Printer Driver for ArTainium ICC Profiles

7. Type R1800 in the Name Field and click Save.

Note: You don't have to use R1800 as the name for this setting; you can use any name that will work for your process.



8. Once you have your name saved and it is showing in the list window, click on close to return to the previous screen.

9. Click on OK under the Advanced Tab to close that window. Then click on OK under the printing preferences window to complete this task.

---