

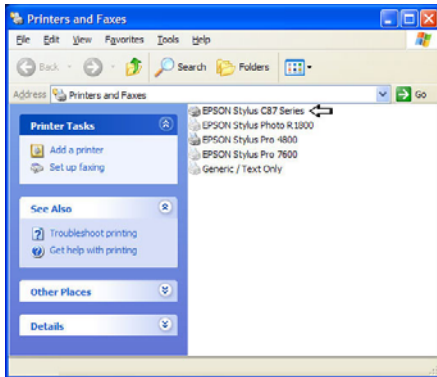


# Configuring the Epson Stylus C87 Printer Driver for ArTainium ICC Profiles

1. On the PC desktop, click Start then select Printers and Faxes as shown below:

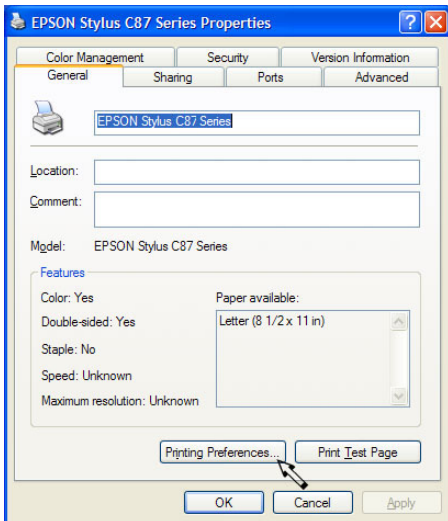


2. Right click on the Epson Stylus C87 Printer Icon and select Properties from the context menu.



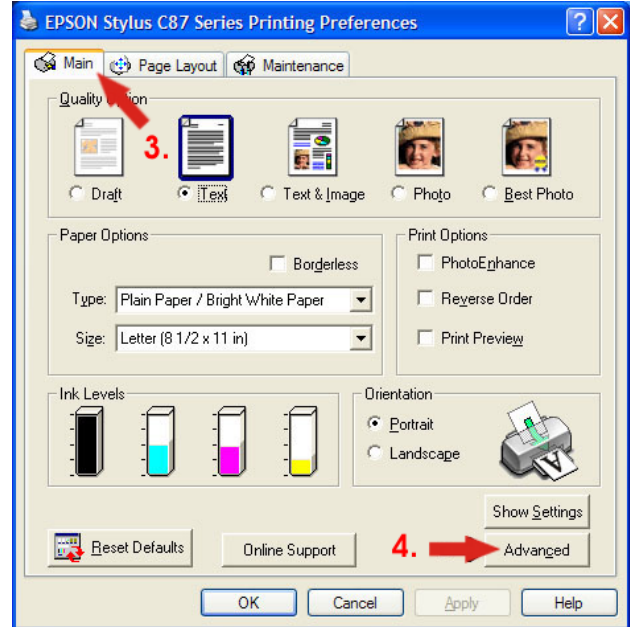
**\*\*For Windows XP users Only \*\***

This is the first screen that will pop-up. Click on Printing Preferences to get to the next screen.



3. Click on the Main tab.

4. Then click on the advanced tab to setup the necessary options for Artainium profiles.



5. Select the settings as shown below:

Paper & Quality Options:

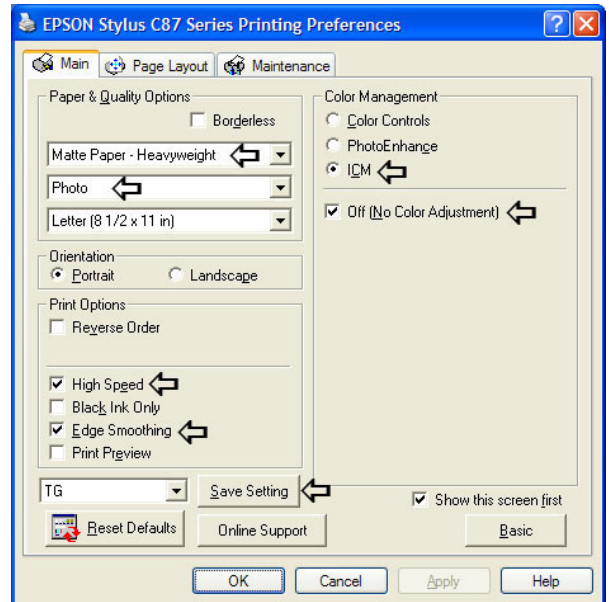
Matte Paper - Heavyweight  
Photo

Color Management: ICM

ICC/ICM Profile: Off (No Color Adjustment)

High Speed: On

Edge Smoothing: On



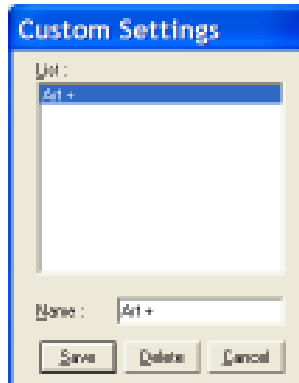
6. Once the settings are complete, click on the Save Settings button to save these options for future printing.

# Configuring the Epson Stylus C87 Printer Driver for ArTainium ICC Profiles



7. Type Art+ in the Name Field and click Save.

Note: You don't have to use Art+ as the name for this setting; you can use any name that will work for your process.



8. Once you have your name saved and it is showing in the list window, click on close to return to the previous screen.

9. Click on OK under the Advanced Tab to close that window. Then click on OK under the printing preferences window to complete this task.

---