

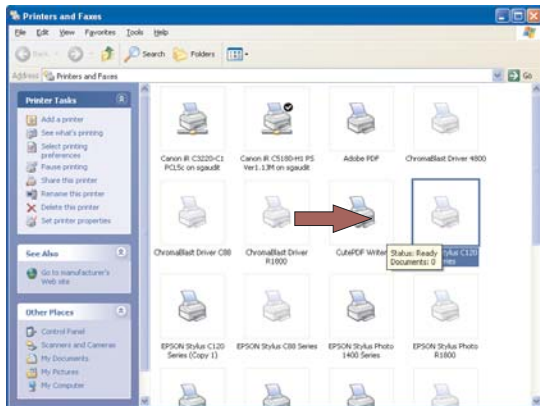


Configuring the Epson Stylus C120 Printer Driver for ArTainium ICC Profiles

1. On the PC or Mac desktop, click Start then select Printer and Faxes as shown below:



2. Select the Epson Stylus C120 Series Printer Icon. Right click the icon and select Printing Preferences from the setup menu.



3. The following settings will should be set on the main setup screen. (screen shots are provided below)

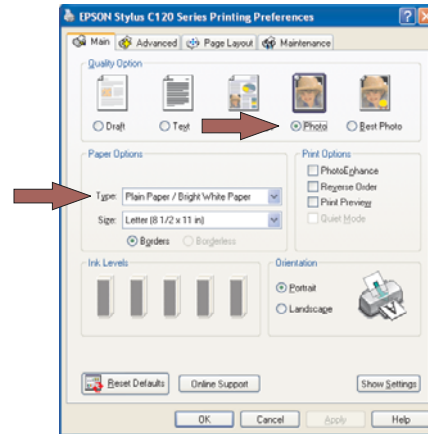
Quality Option: **Photo**

Paper Type: **Type: Plain Paper/
Bright White Paper**

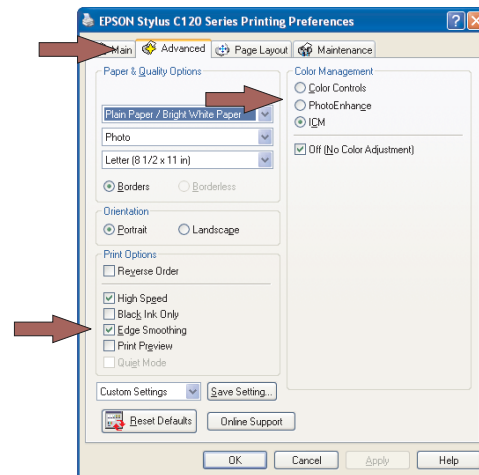
Print Options: **High Speed: On
Edge Smoothing: On**

Mode: **No Color Management:
ICM: On**

4. Select **Photo** from the Quality Options at the top of the page. In the Paper Options section of the page, select **Plain Paper/Bright White Paper** from the Paper Type drop down box..



5. Select the Advanced tab at the top of the page.



6. Click on the **High Speed** and **Edge Smoothing** print options.

In the Color Management section of the page select the **ICM** and **No Color Management** options.

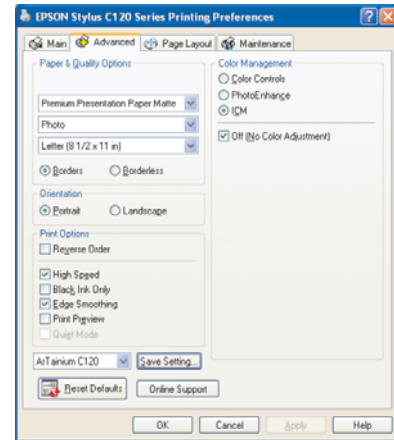
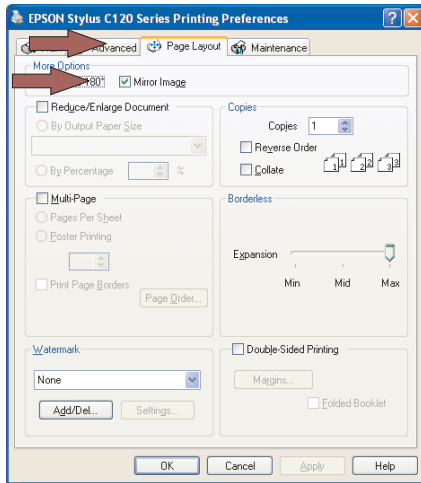
Click **OK**.

Configuring the Epson Stylus C120 Printer Driver for ArTainium ICC Profiles



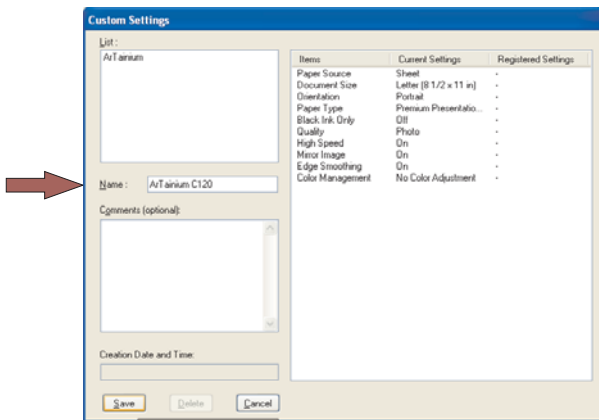
7. Next, click on the Page Layout tab at the top of page. Select the **Mirror Image** option so that it becomes the default setting. If you do not want to mirror an image, this setting can be changed before printing. Click **OK** and return to the main menu.

8. On the Advanced Tab menu screen click **Save Settings**.



9. Type in **ArTainium C120** in the **Name** field and click **Save**.

Note: You don't have to use ArTainium C120 as the name for this setting; you can use any name that choose.



10. Click **Save** at the bottom of the page to complete the configuration.

