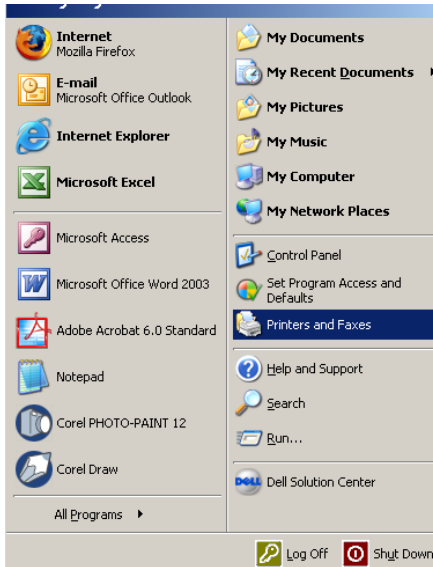
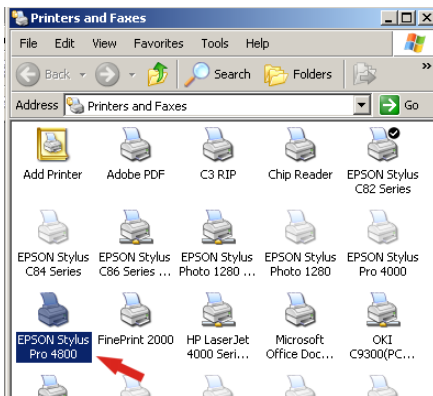


# Configuring the Epson Stylus 4800 PRO Printer Driver for ArTainium ICC Profiles

1. On the PC desktop, click Start then select Printers and Faxes as shown to the right:

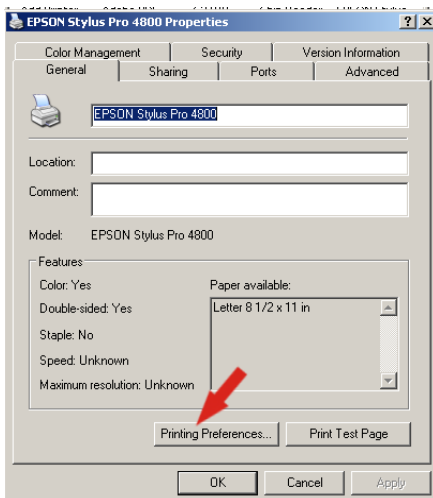


2. Right click on the Epson Stylus Pro 4800 Printer Icon and select Properties from the context menu.



**\*\*For Windows XP users Only \*\***

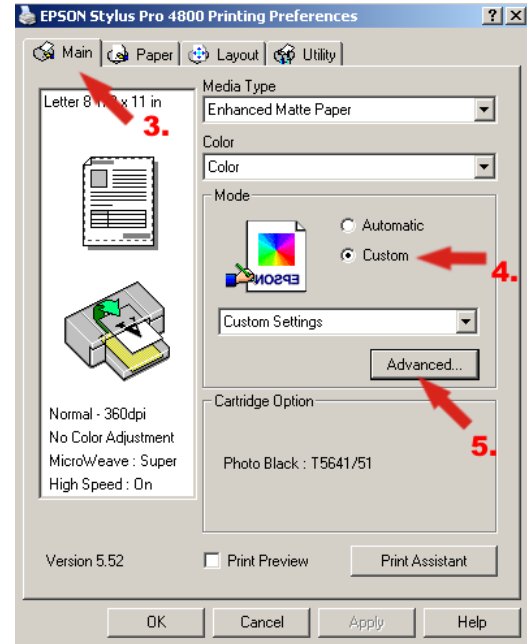
This is the first screen that will pop-up. Click on Printing Preferences to get to the next screen.



3. Click on the Main tab to show the screen you will be working in.

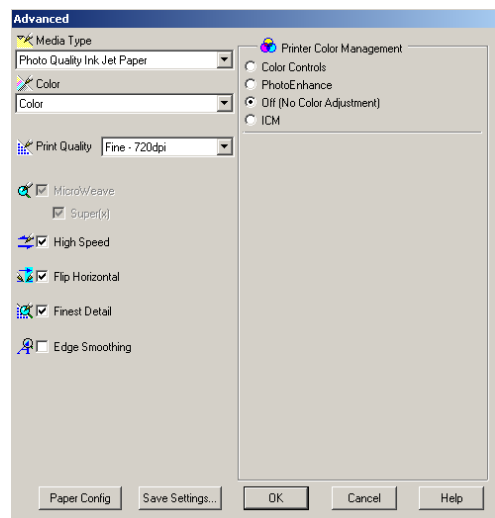
4. Under Mode, select the Custom option.

5. Then click on the advanced tab to setup the necessary options for Artainium profiles.



6. Select the settings as shown below:

- Media Type: **Photo Quality Ink Jet Paper**
- Print Quality: **Fine 720dpi**
- Printer Color Management: **Off (No Color Adjustment)**
- Microweave: **Preset to On**
- High Speed: **On**
- Flip Horizontal: **On**
- Finest Detail: **On**

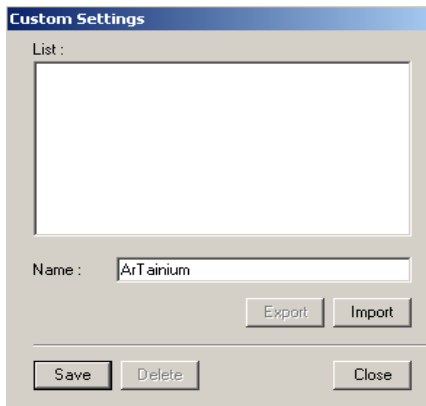


7. Once settings are complete, click on the Save Settings button to save these options so this process doesn't have to be completed each time printing is done.

# Configuring the Epson Stylus 4800 PRO Printer Driver for ArTainium ICC Profiles

8. Type ArTainium in the Name Field and click Save.

Note: You don't have to use ArTainium as the name for this setting; you can use any name that will work for your process.



9. Once you have your name saved and it is showing in the list window, click on close to return to the previous screen.

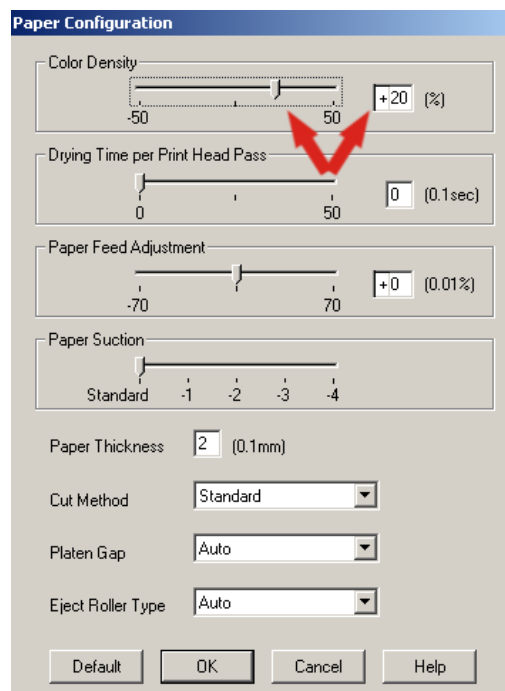
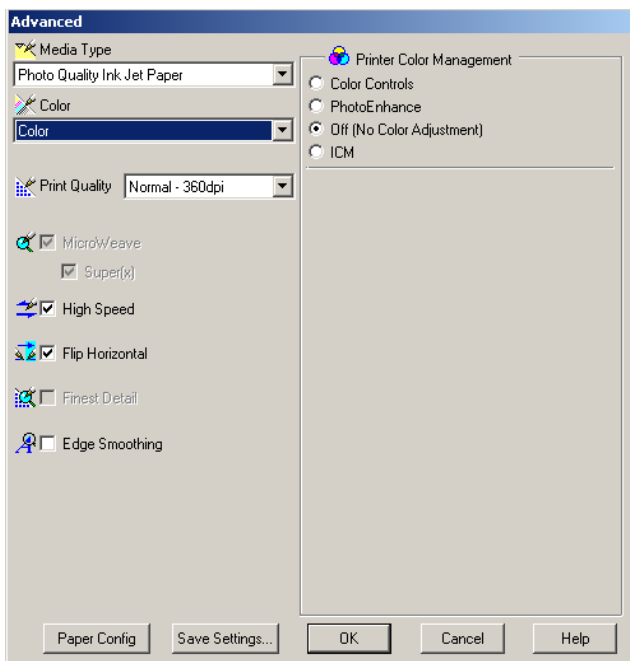
10. Click on OK under the Advanced Tab to close that window. Then click on OK under the printing preferences window to complete this task.

***The previous settings are ideal for printing/transferring onto hard substrates such as Ceramics, Metal, Unisub, etc. For softer substrates, the driver can be setup to print faster using a lower resolution setting.***

To add this setting, go through Steps 1-5. For step 6, select the settings below.

- Media Type: **Photo Quality Ink Jet Paper**
- Print Quality: **Normal 360dpi**
- Printer Color Management: **Off (No Color Adjustment)**
- Microweave: **On**
- Super(x): **On**
- High Speed: **On**
- Flip Horizontal: **On**

When using the lower resolution settings for softer substrates, you may need to increase the color density when printing solid filled images. To do this, click on the Paper Config button on the Advanced screen and increase the Color Density to around 20% and click on OK.



To save this setting follow steps 8-10.

\*\*\* Note - Be sure to use a different Name for this setting so that you don't over write the previous options.\*\*\*