

# Photoshop Elements

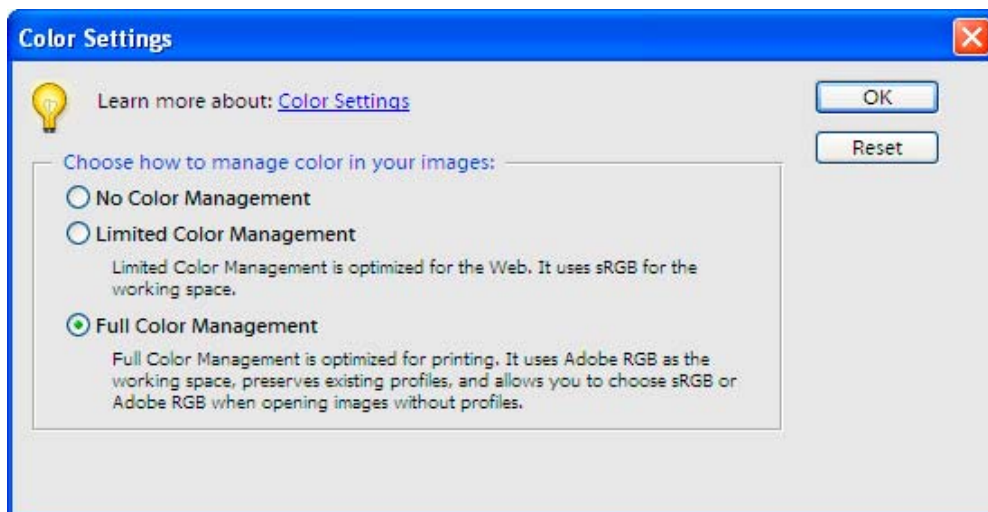
Versions 2.0/ 3.0/ 4.0/5.0

## Color setup and printing with the ArTainium<sup>®</sup> ICC Profile

Photoshop Element's color space needs to be set to the working space on which the ArTainium ICC Profile was created. This allows a more accurate screen display of your images. The accuracy of the displayed image on your monitor will be dependent upon the quality of your monitor and more importantly a calibrated monitor ICC Profile.

Follow the steps below to set up your monitor and Photoshop.

- A. Use **Adobe Gamma** located in the **Control Panel** folder to set up your monitor. Press **Start**, then **Settings** and then **Control Panel** on your keyboard. Double click the **Adobe Gamma** icon and follow the on screen wizard. Save your adjustments.
- B. Open Photoshop Elements.  
Open the RGB settings configuration window by pressing **Edit** from the drop down menu on top. Select **Color Settings**.



Select **Full Color Management**.

Photoshop Elements' color space is now set to use the same space that the ArTainium ICC profiles were created for and allows the ArTainium printer profile to be selected in the print options window.

Photoshop Elements' internal color working space is already set to Adobe RGB (1998) by default and cannot be changed.

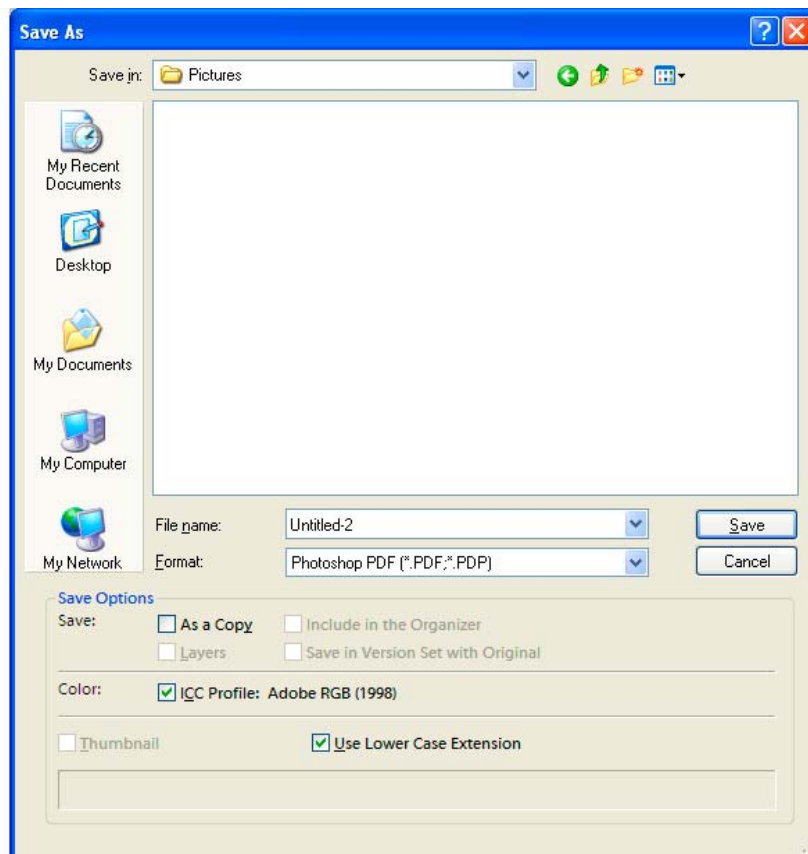
Images opened in Photoshop Elements are only displayed with the Adobe RGB (1998) profile and printed with the original workspace (embedded profile or no profile).

Normally one does not have to be concerned with what the images profile. If you have a need for hyper-critical color matching it is recommended to save your image first with the Adobe RGB (1998) working space and reopen the image before printing it.

This is accomplished as follows:

Open your image as normal.

Click **File – Save As**



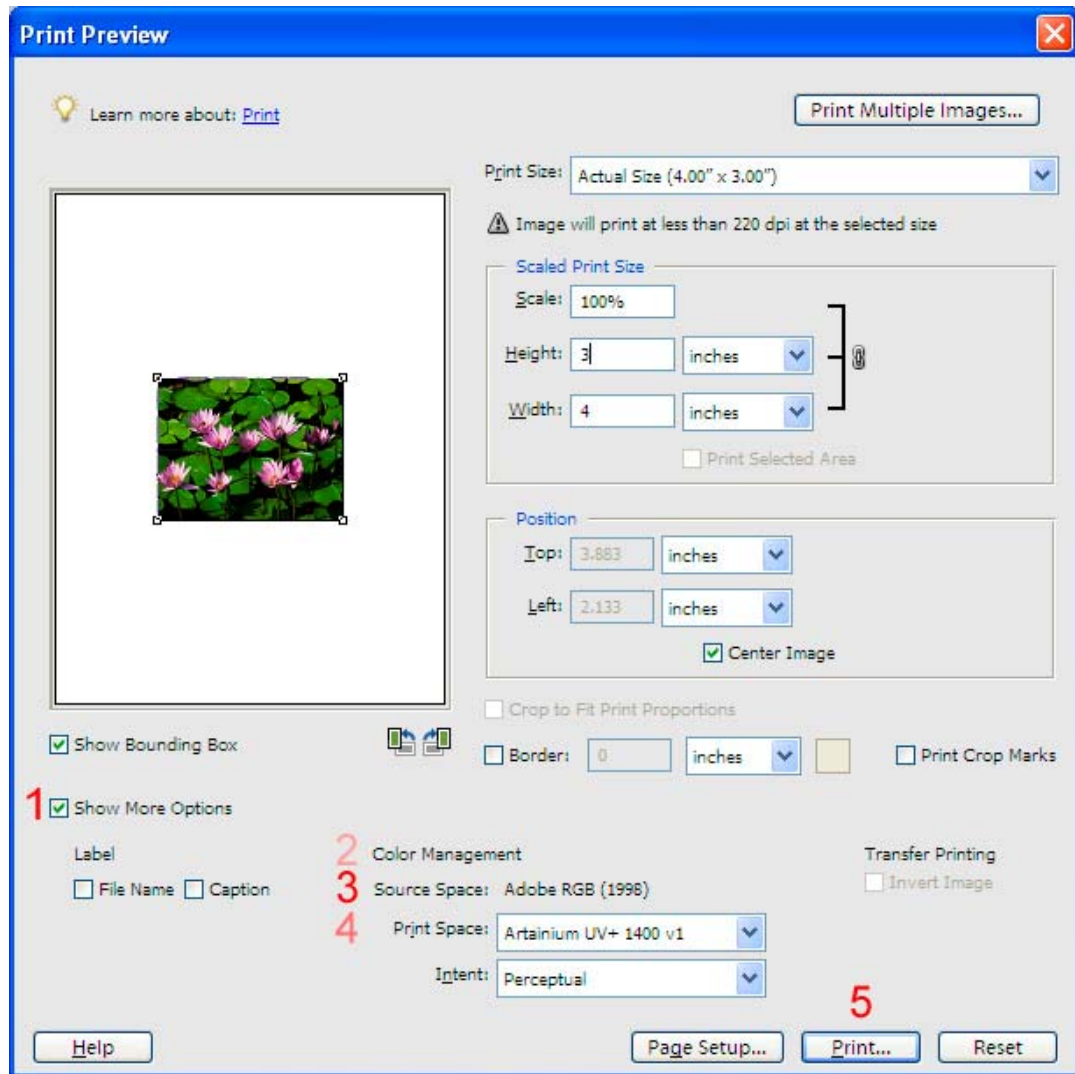
Click (check) the **Color:ICC Profile Adobe RGB (1998)** box

Click **Save**

Reopen the image. It will now have the embedded Adobe RGB (1998) workspace profile. You can now work with the image as normal.

## Photoshop Elements Printing with the ArTainium ICC Profile

When your image is ready to print, click **File – Print**



Click the **Show More Options** box. (1) This will reveal a window similar to one shown above.

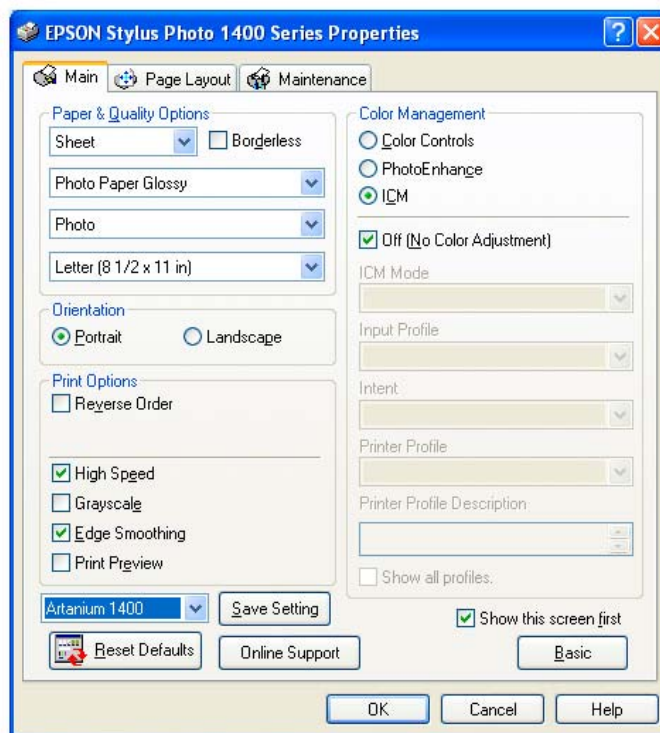
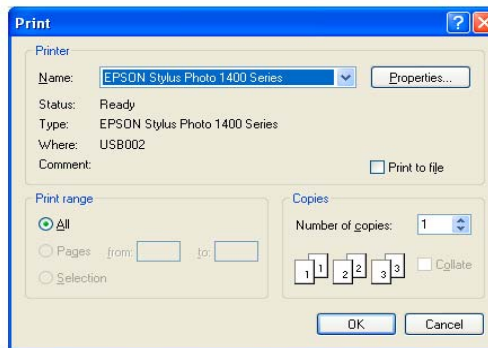
The **Color Management** and **Source Space** should show Adobe RGB (1998) as in (2) and (3) above.

Select the ArTainium ICC Profile for your printer from the **Print Space** drop down window box. (4)

Click **Print**. (5)

Note: If you don't see any reference to the ArTainium RGB ICC profile in the **Print Space** list then your ICC Profile has not been properly installed on your computer, or Photoshop Elements has not been restarted since the profile was installed. Restart Photoshop Elements and repeat the printing instructions above.

Select your printer and click **Properties**.



Select your printer from the drop down menu at the bottom left of the properties page. Your properties page should look similar to the one above. The **ICM** option and the **Off (No Color Adjustment)** options should be selected. Click **OK**. Photoshop Elements will now print your image using the ArTainium ICC profile in conjunction with the configured Epson print driver.