

# Adobe Photoshop CS/CS2/CS3

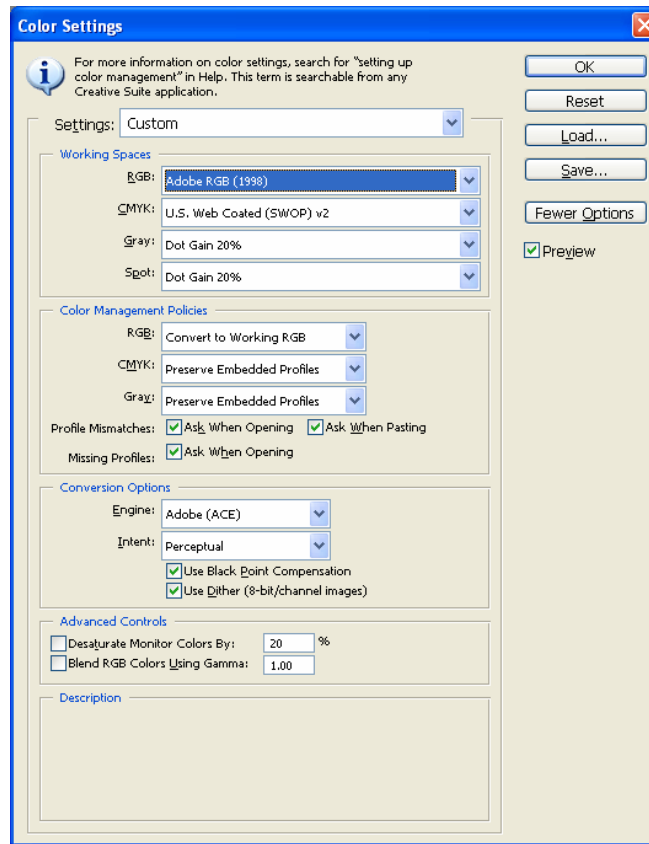
## Color setup and printing with the ArTainium<sup>®</sup> ICC Profile

Adobe Photoshop's color space needs to be set to the working space on which the ArTainium ICC Profile was created. This allows a more accurate screen display of your images. The accuracy of the displayed image on your monitor will be dependent upon the quality of your monitor and more importantly a calibrated monitor ICC Profile.

Follow the steps below to set up your monitor and Photoshop.

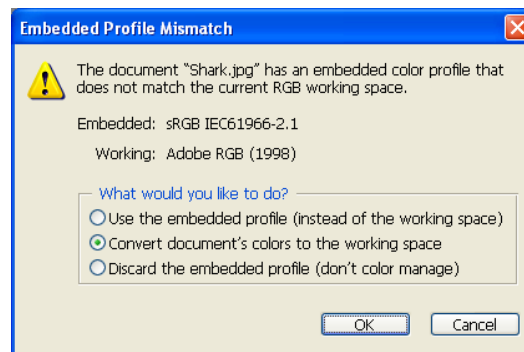
- A. Use **Adobe Gamma** located in the **Control Panel** folder to set up your monitor. Press **Start**, then **Settings** and then **Control Panel** on your keyboard. Double click the **Adobe Gamma** icon and follow the on screen wizard. Save your adjustments.
- B. Open Adobe Photoshop.  
Open the RGB settings configuration window by pressing **Edit** from the drop down menu on top. Select **Color Settings**.
- C. In the **Working Spaces** section of the settings page enter **Adobe RGB (1998)** from the drop down menu of the RGB window.
- D. In the **Color Management Policies** section of the settings page enter **Convert to Working RGB** from the drop down menu of the RGB window.

Make sure that the Color Settings dialog box looks like the screen shot below.



Adobe Photoshop's RGB working space is now set and adobe gamma is controlling your monitor profile.

When opening images in Adobe Photoshop, you may encounter a profile mismatch warning.

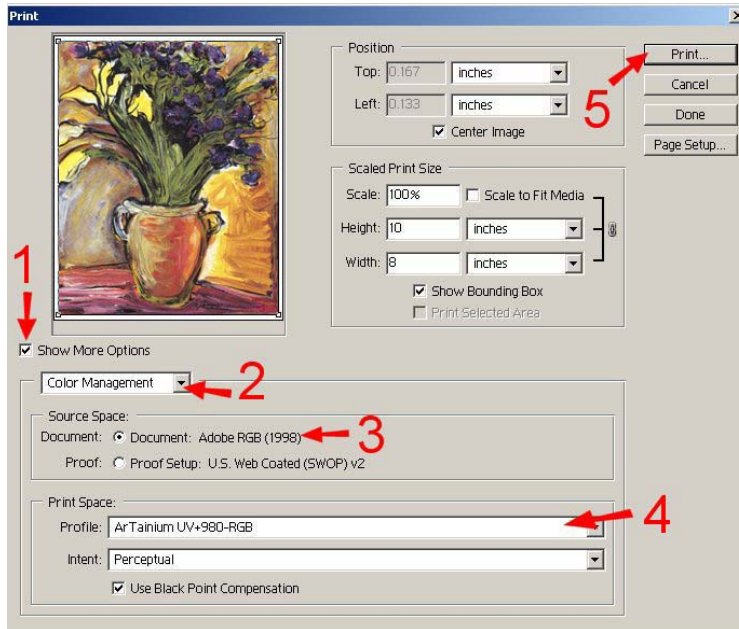


Select **Convert Document's Colors to the working space** option and click **OK**. Continue working with your images as normal. Use the Printing images from Photoshop instructions on the following pages.

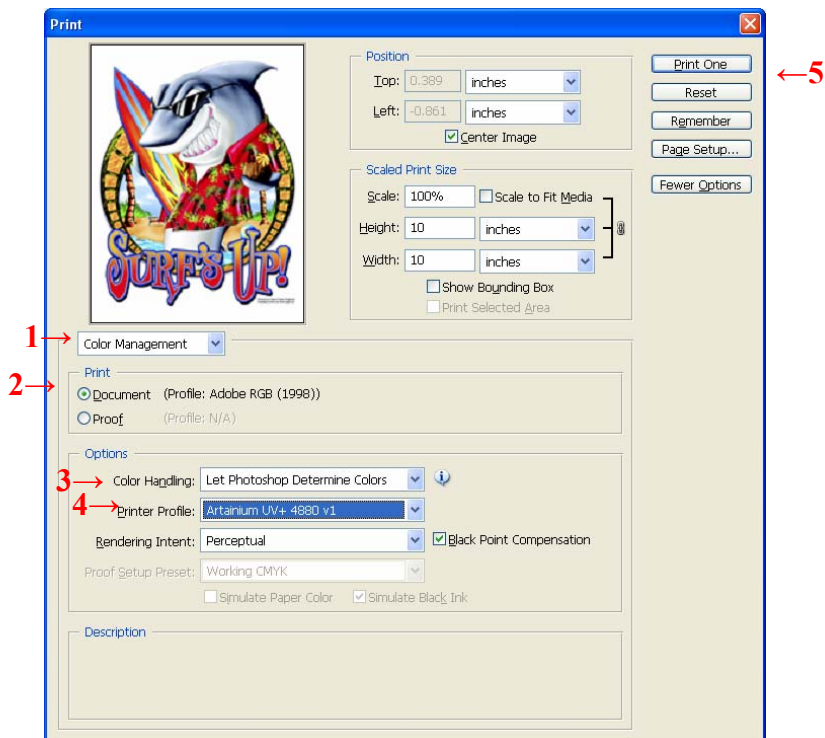
# Adobe Photoshop printing with the ArTainium ICC Profiles

When your image is ready to print, click File – Print with Preview..

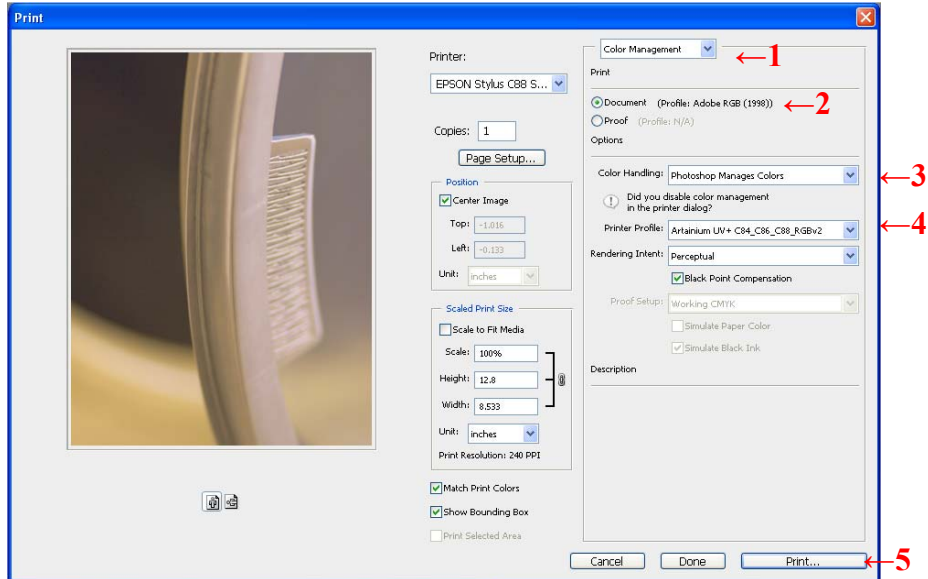
The following dialog boxes will appear depending upon the version of Photoshop you are using.



**Photoshop 7 and CS**



**PhotoShop CS2**



### Photoshop CS3

Choose **Color Management** (1) from the drop down menu

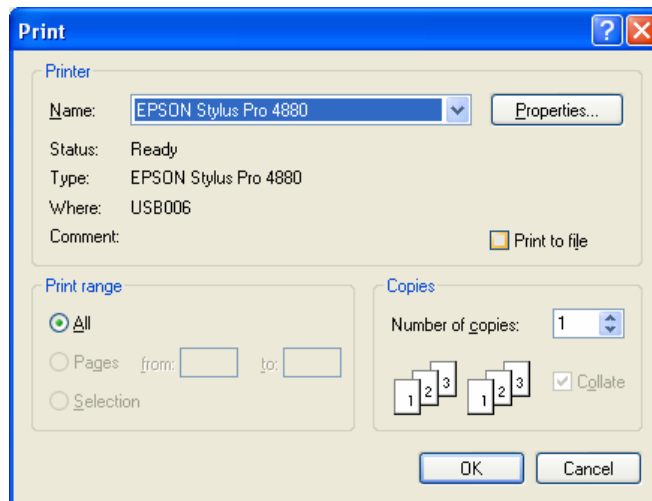
Select the Document option **Profile:Adobe RGB (1998)** (2).

Choose **Photoshop Manages Colors** (3) from the Color Handling drop down menu.

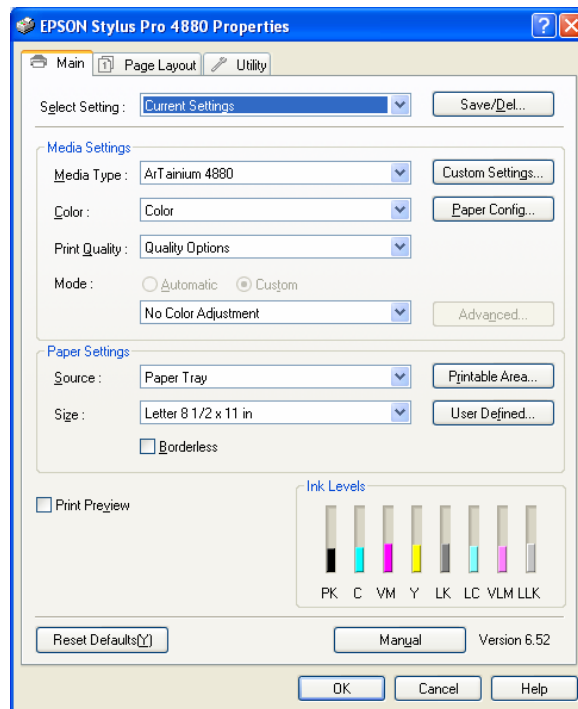
Choose the **ArTainium Profile** (4) for the printer you are using from the drop down menu of the Printer Profile window.

Click **Print**. (5)

Select your printer from the drop down menu at the bottom left of the properties page.



Select the printer and click **Properties**.



Select the ArTainium profile that matches your printer from the custom or Media Type drop down menus.

Click **OK** and then Click **OK** again on the printer dialog box that appears. Photoshop will now print your image using the ArTainium ICC profile utilizing the Epson Print driver for your particular printer.