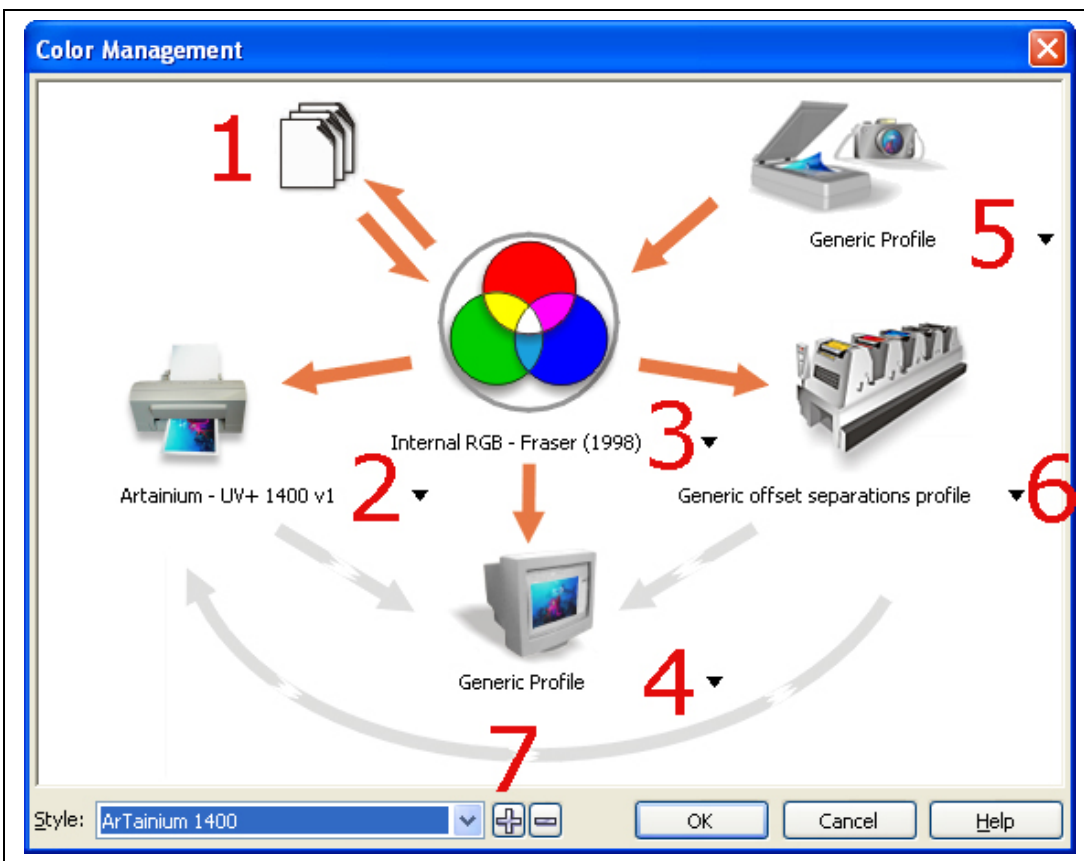


# Corel Draw 10/11/12/13(X3) Color Setup and printing with the ArTainium ICC Profile

Corel Draw's color space needs to be set to the working space on which the ArTainium ICC Profile was created. This allows a more accurate screen display of your images. The accuracy of the displayed image on your monitor will be dependent upon the quality of your monitor and more importantly a calibrated monitor ICC Profile.

Open the Color Management Options window **Tools- Color Management**.

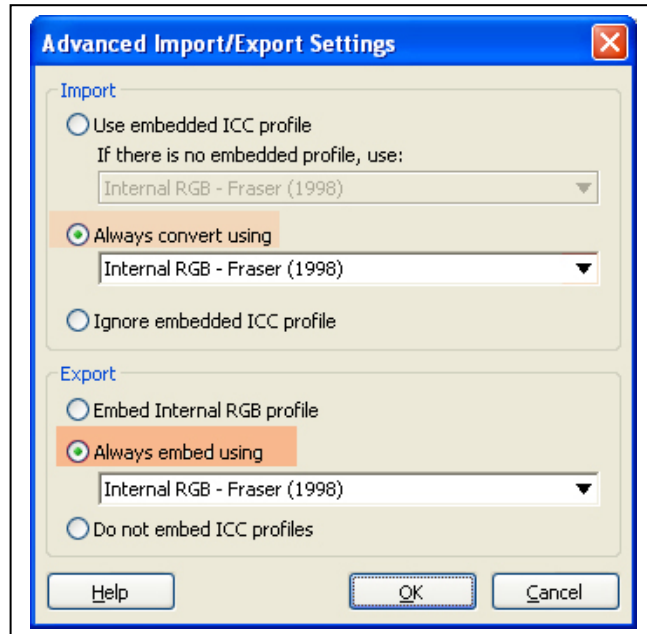
**Note:** you must have an image or blank page on the screen to select this option.



This is where you will configure Corel Draw's default color space and ICC Profiles.

All of the (Orange/Grey) arrows need to be set as shown in the figure above. Change the color of the arrows (Orange color turned on – Grey color switched off) by clicking on the arrow itself until the desired arrow color is obtained.

1. Configure the Import-Export Settings.  
Click on the image of the ‘paper sheets’ to open up the window shown below.  
This window configures how Corel Draw handles files that are imported to a document.0



Click **Import: Always convert Using**. Select **Internal RGB-Fraser (1998)** from the drop down menu.

Click **Export: Always embed**. Select **Internal RGB – Fraser (1998)** from the drop down menu.

Click **OK**

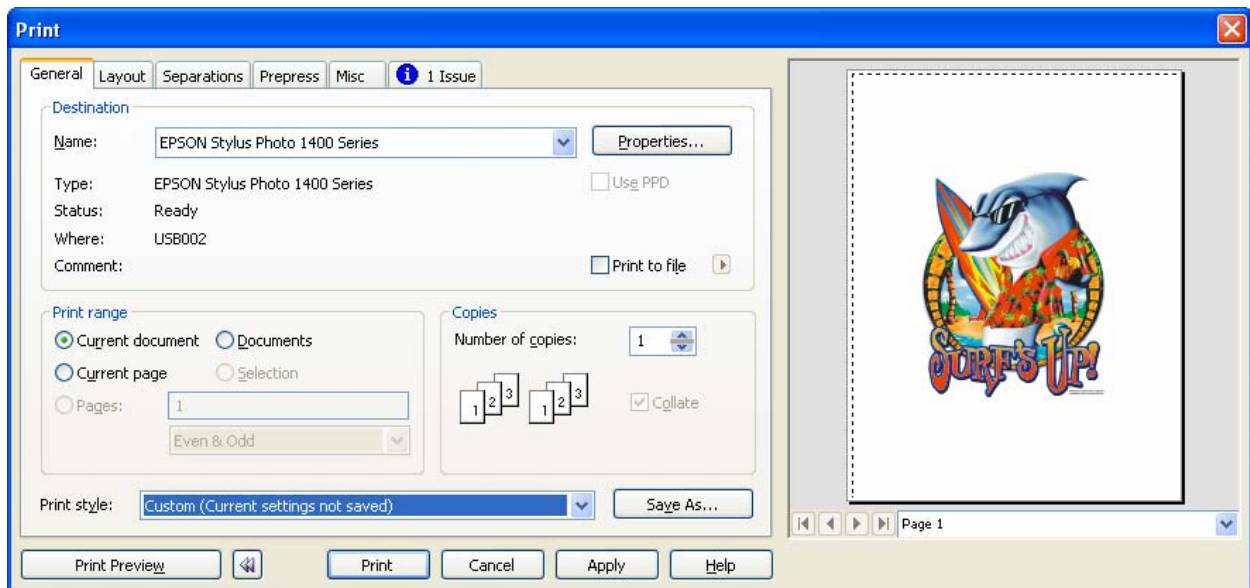
2. **Composite Printer.** Select the ArTainium ICC printer profile. Open the drop down menu and select the ICC profile for the printer you have installed. If you can't find the ArTainium RGB profile then either it was not properly installed on your computer or you may not have re-started Corel Draw after the ICC profile was originally installed. Close the application and re-launch Corel Draw.
3. **Internal RGB Space.** Select **Internal RGB – Fraser (1998)** from the drop down menu.
4. **Monitor:** Select the ICC Profile for your monitor (If you have Adobe Photoshop on your system you can select the profile you created in Adobe Gamma) or you can let the system default to **Generic Profile**. You may also check out the website of your monitor manufacturer for ICC profiles for your particular monitor. Download it and install it to **C:\Windows\System\Color** and restart your computer.

5. **Scanner:** If you have a scanner attached to your system you can select your scanner ICC profile from the drop down menu or you can let the system default to **Generic Profile**. If your scanner is not listed, check out the website of your scanner manufacturer for ICC profiles for your particular scanner. Download it and install it to **C:Windows\System\Color** and restart your computer.
6. **Separations Printer:** This setting is generally not used and should be set to **Generic Offset Separations Profile** unless you print separations.
7. **Save your settings:** Click the “+” button and name your settings. Click **OK** to save.

Corel Draw’s color space and printer ICC is now set to use the same space that the ArTainium ICC profiles were created for.

## Printing using the ArTainium ICC profiles

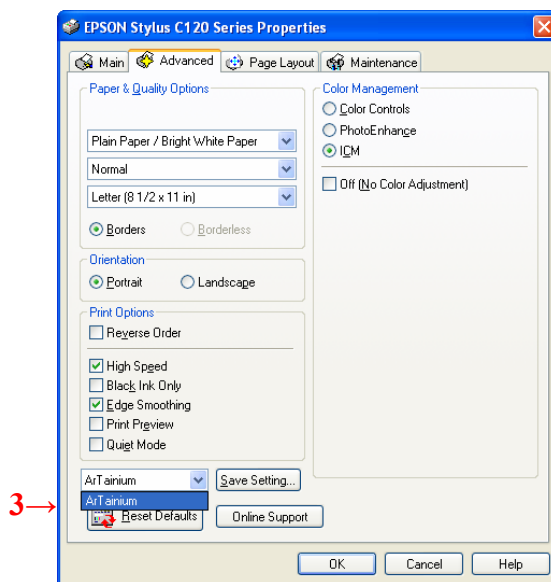
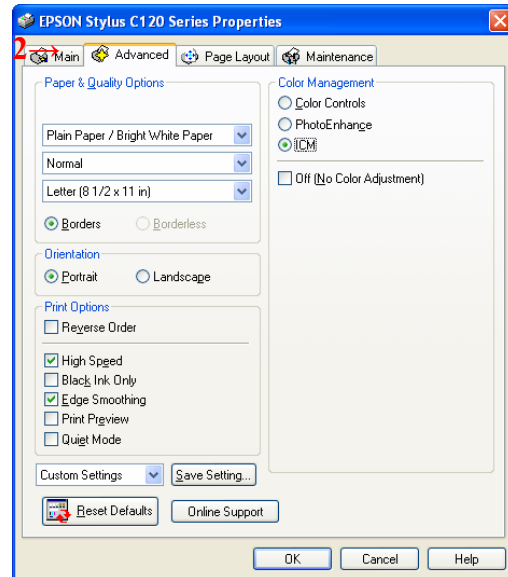
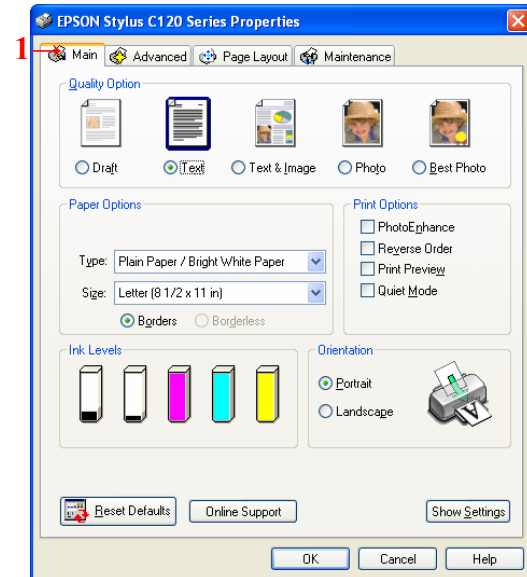
When your image is ready to print Click **File – Print**. Select your printer from the drop down printer name menu. A screen similar to the one below will appear.



After selecting your printer from the drop down menu and click **Properties**.

Depending upon the printer you will have different screen option. Find the instructions below for your particular printer.

## Epson C88 and C120



Click on the Advanced tab at the top of the dialog box (1)

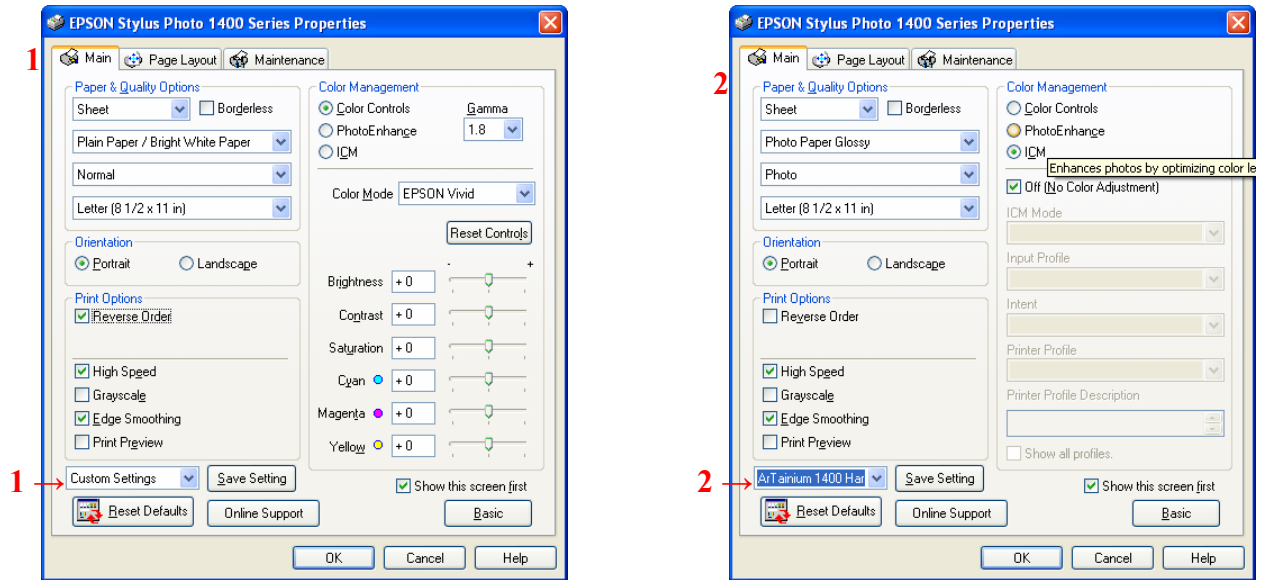
On the Advanced Page select the printer from the **Custom Settings** drop down menu (2).

Select the ArTainium printer profile you created earlier when you configured the Epson print driver. (3)

Click **OK**. This will take you back to the main printer dialog page.

Click **Print**.

## Epson 1400 and Epson R1800



On the Main Page select the printer from the **Custom Settings** drop down menu (1).

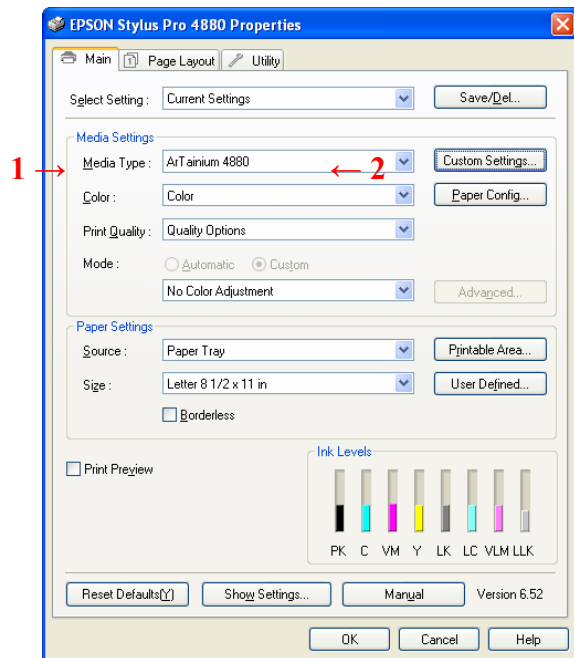
Select the ArTainium printer profile you created earlier when you configured the Epson print driver. (2)

Click **OK**. This will take you back to the main printer dialog page.

Click **Print**.

→

## Epson 4800 and 4880



On the Main Page select the printer from the **Media Type** drop down menu (1).

Select the ArTainium printer profile you created earlier when you configured the Epson print driver. (2)

Click **OK**. This will take you back to the main printer dialog page.

Click **Print**.